

# Service Systems

## Presentation to ITTOC

Presented By

CYFD Information Technology Services

September 19, 2008

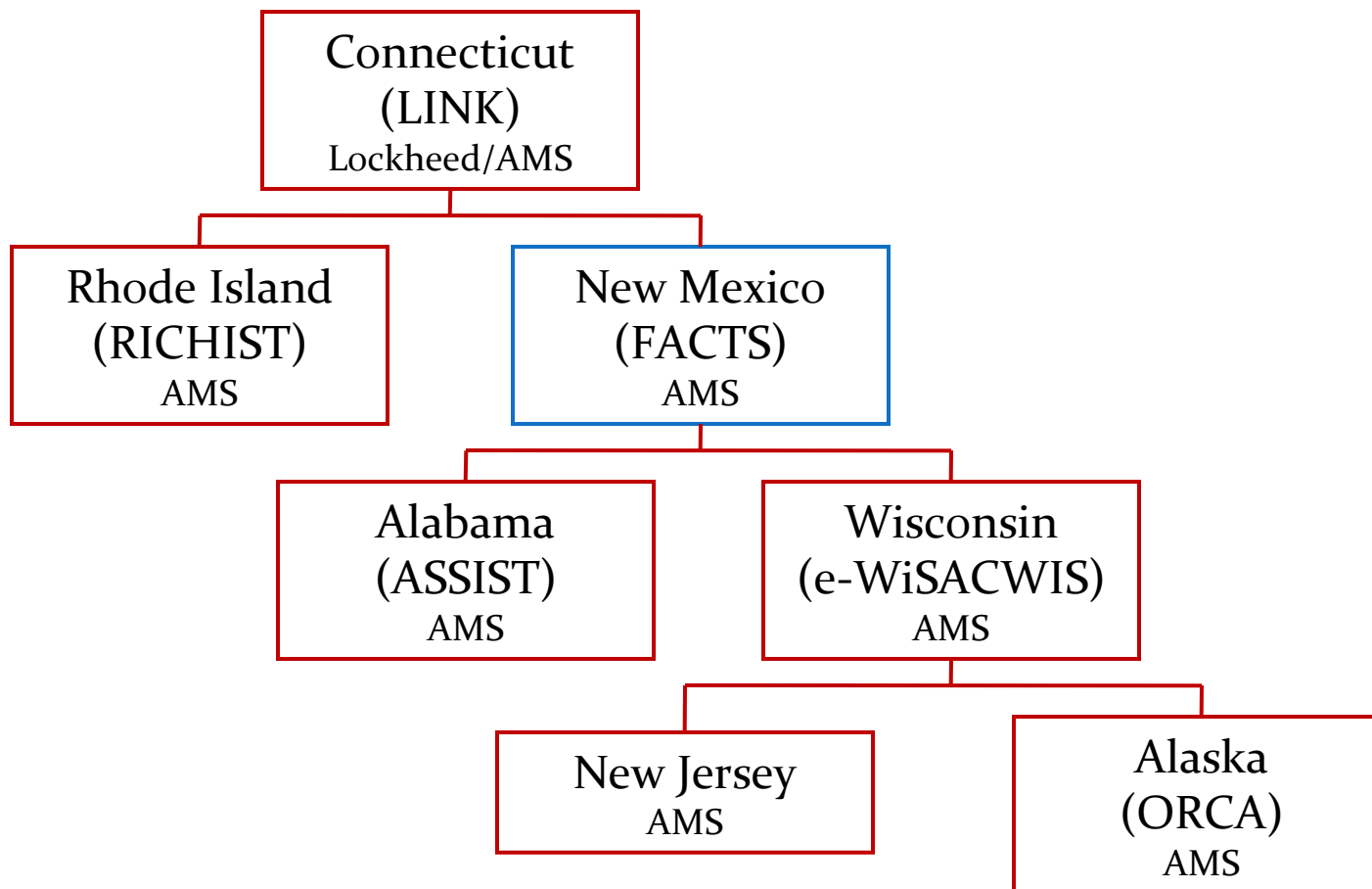


## History

- Title XIII, Section 13713, Enhanced Match for Automated Data Systems, of the Omnibus Budget Reconciliation Act (OBRA) of 1993 (PL 103-66) enacted on August 19, 1993.
- SACWIS – State Automated Child Welfare Information Systems
- 75% Federal Funding



# SACWIS Transfer System





# SACWIS – States’ Status

| Operational Systems (27)                |                               |   |
|---|-------------------------------|---|
| SACWIS Compliance Achieved              |                               | Enhancing to Maintain SACWIS Compliance |
| Arkansas                                | <a href="#">New Mexico</a>    | <a href="#">Kentucky</a>                |
| <a href="#">Arizona</a>                 | <a href="#">West Virginia</a> | Oklahoma                                |
| SACWIS Compliance Action Plans Approved |                               |   |
| <a href="#">Colorado</a>                | <a href="#">Minnesota</a>     | <a href="#">Utah</a>                    |
| Delaware*                               | Montana                       | Texas                                   |
| Idaho                                   | Nebraska                      | <a href="#">Wisconsin</a>               |
| <a href="#">Massachusetts</a>           | <a href="#">Rhode Island</a>  | Wyoming                                 |
| SACWIS Compliance Assessment Initiated  |                               |   |
| <a href="#">Alaska</a>                  | <a href="#">Indiana</a>       | <a href="#">Nevada</a>                  |
| <a href="#">Connecticut</a>             | Iowa                          | New Hampshire                           |
| District of Columbia                    | Maine                         | South Dakota                            |



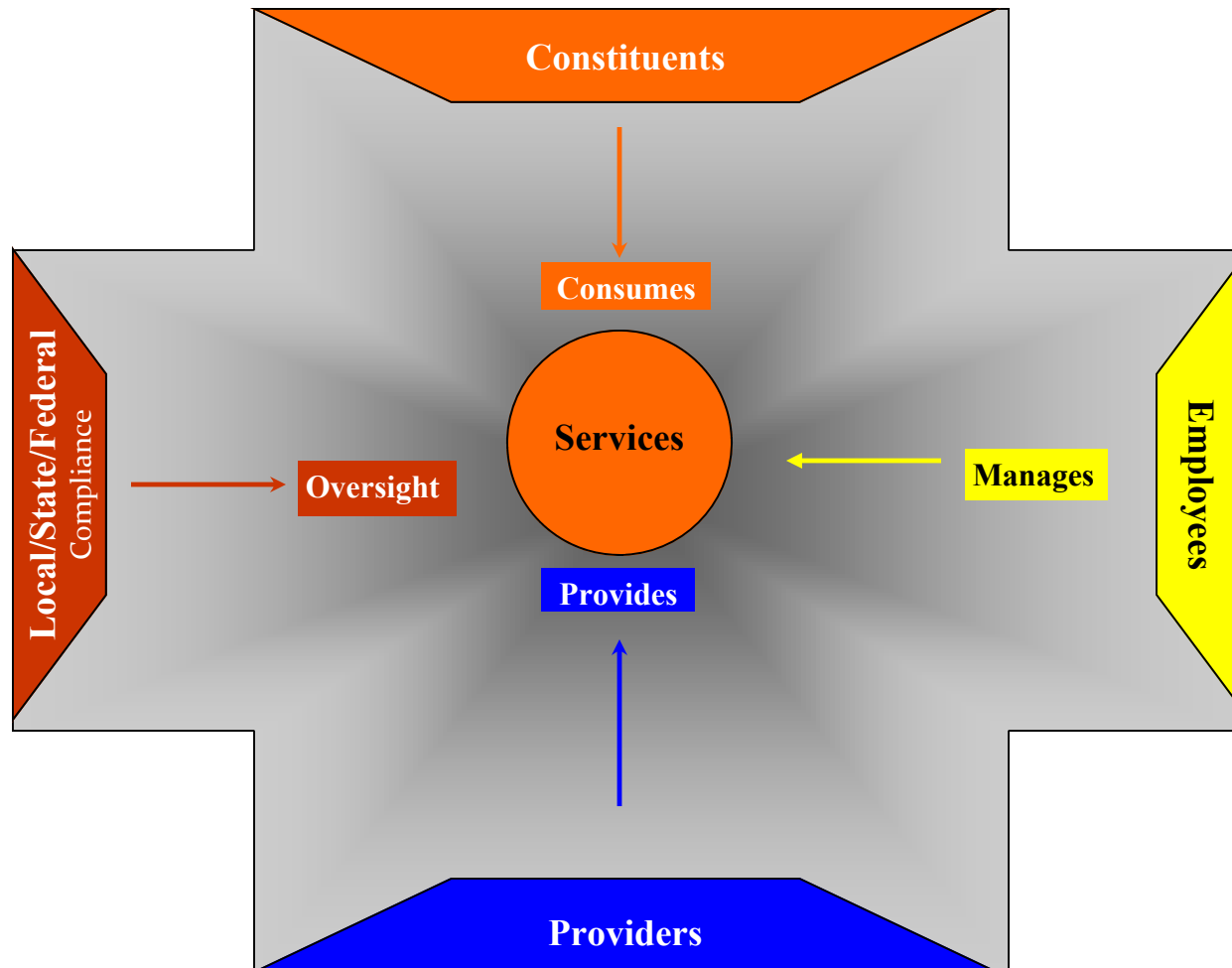
# SACWIS – States’ Status

| Systems In Development (16) |                             |                      |
|-----------------------------|-----------------------------|----------------------|
| <b>Partial Rollout</b>      |                             |                      |
| Florida                     | <a href="#">Mississippi</a> | New York             |
| <a href="#">Georgia</a>     | Missouri                    | <a href="#">Ohio</a> |
| Louisiana                   | Maryland                    | South Carolina       |
| Michigan                    | New Jersey                  |                      |
| <b>Design/Coding Phase</b>  |                             |                      |
| Alabama                     | <a href="#">Washington*</a> |                      |
| <b>Planning Phase</b>       |                             |                      |
| <a href="#">California</a>  | Oregon                      | Tennessee            |

| Non-SACWIS Models (8) |                |          |
|-----------------------|----------------|----------|
| Hawaii                | North Carolina | Vermont  |
| Illinois              | North Dakota   | Virginia |
| Kansas                | Pennsylvania   |          |



# Basic Social Services Model





# FACTS/EPICS

## EPICS

**Organize IT around Services  
( Instead of around Applications )**

**Provider  
Management**

**Staff  
Management**

**Service  
Management**

**Financial  
Management**

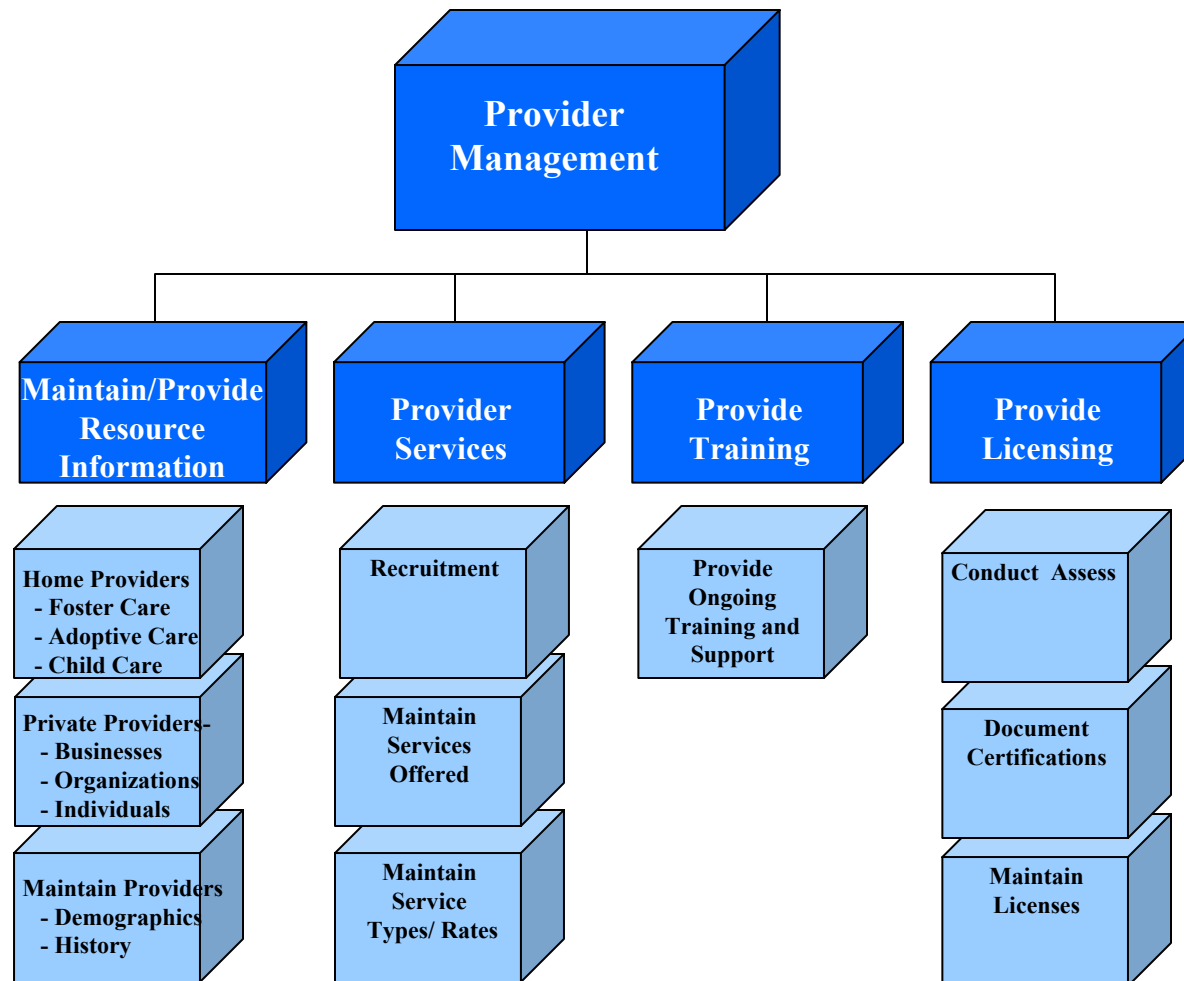
**Common  
Application  
Functions**

- ▶ **Distinct, Easily Identifiable Business Processes**
- ▶ **Easy to Maintain**

**Interfaces**



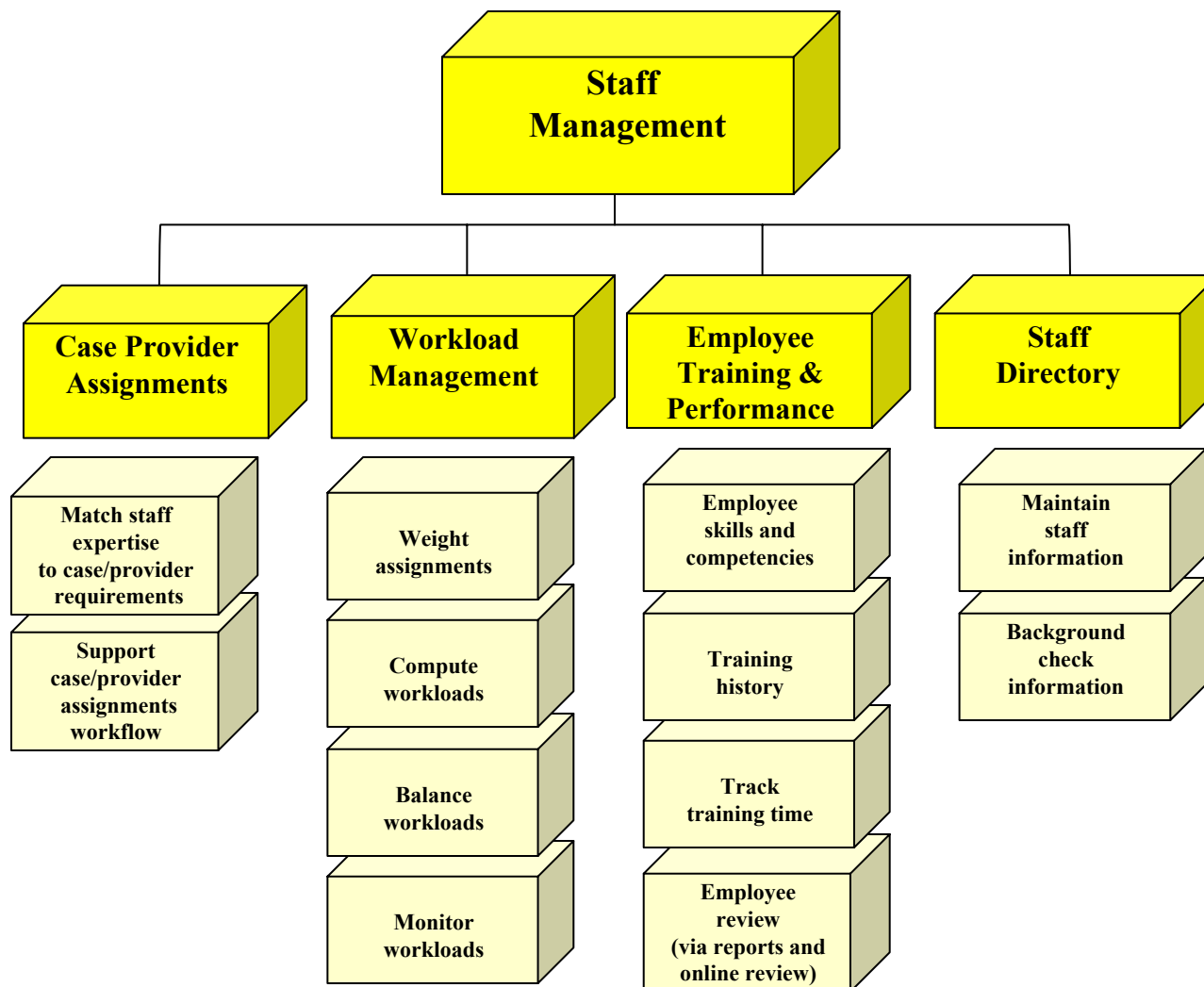
# Provider Management





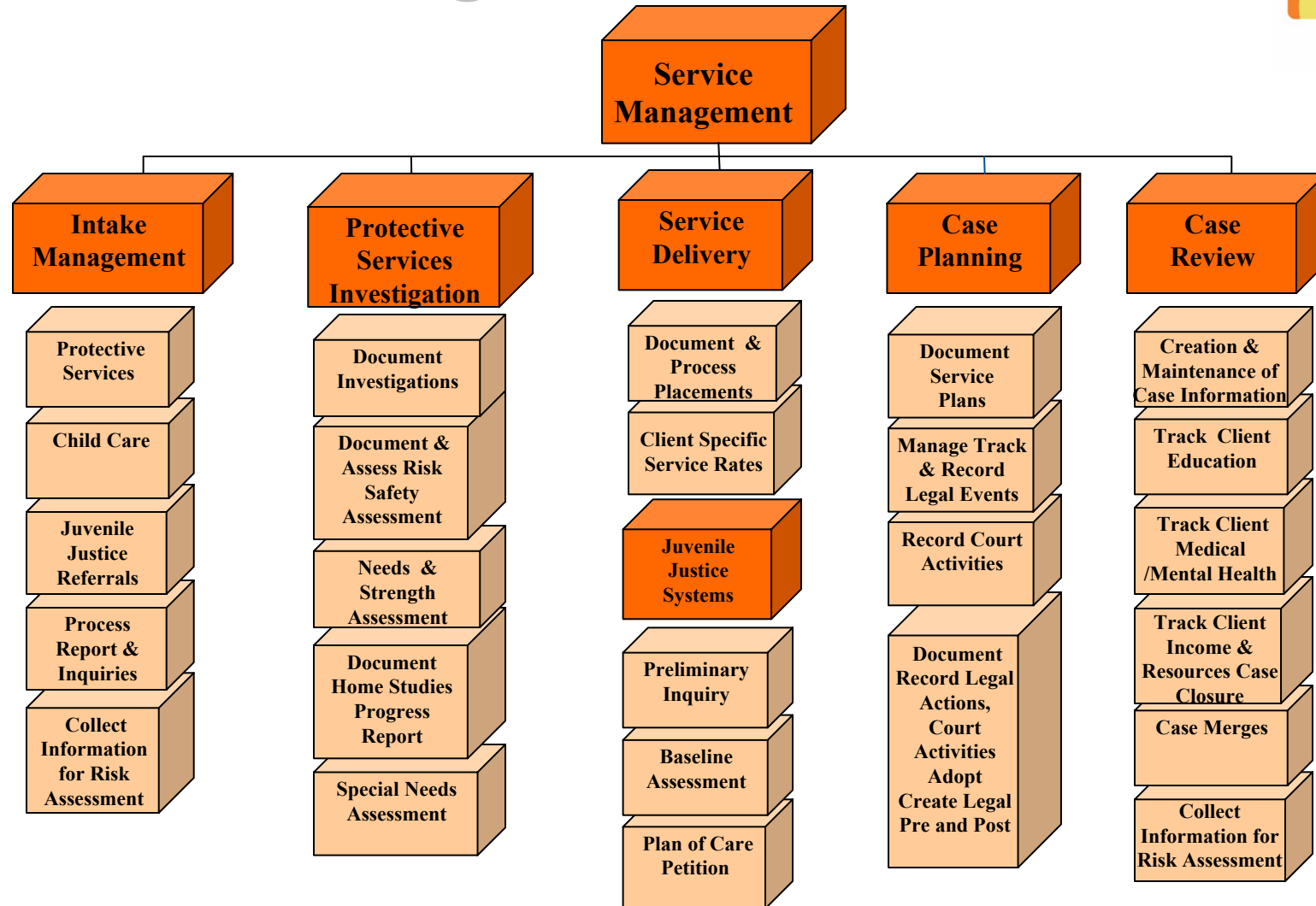


# Staff Management





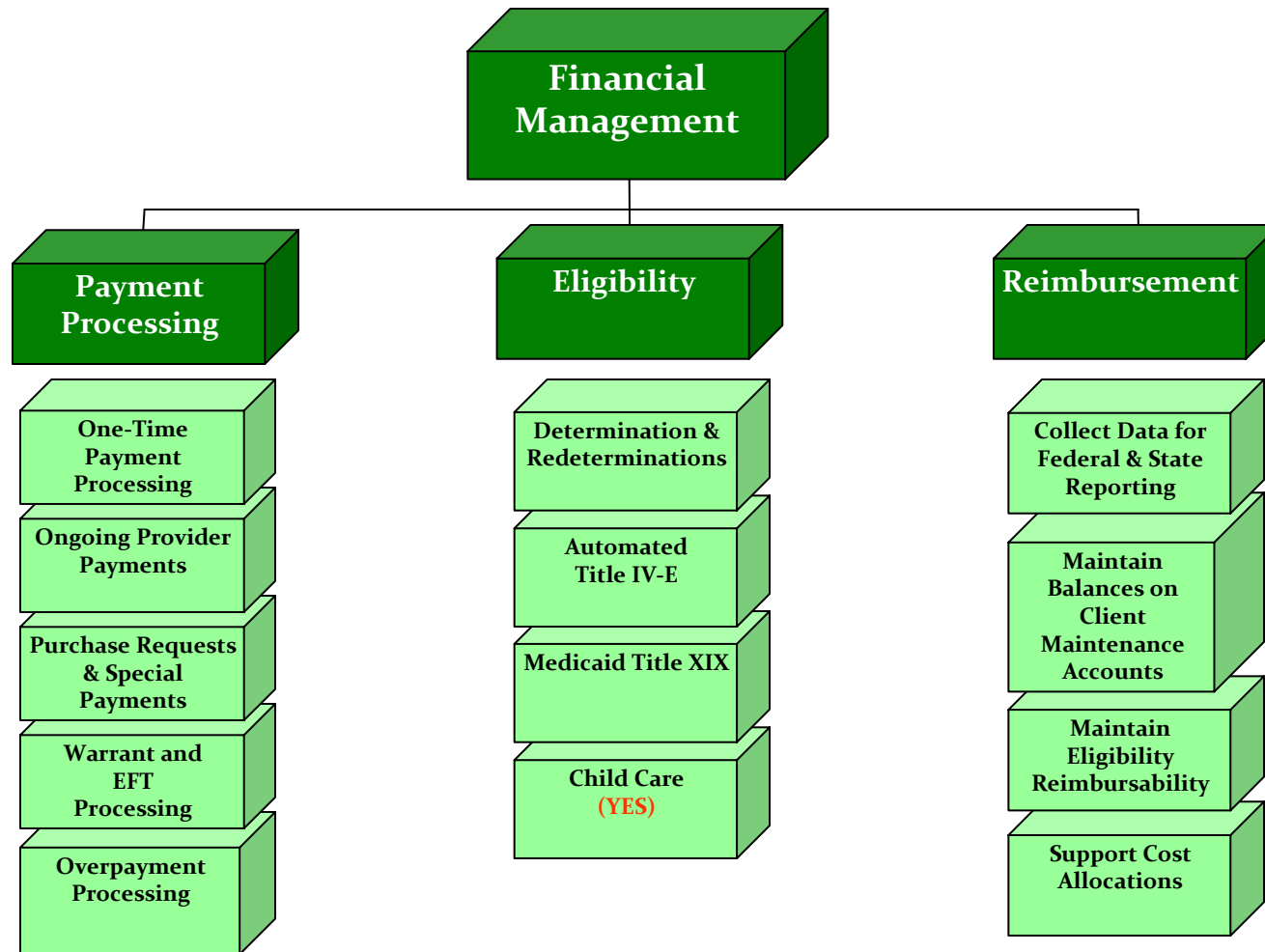
# Service Management



(BEHR)

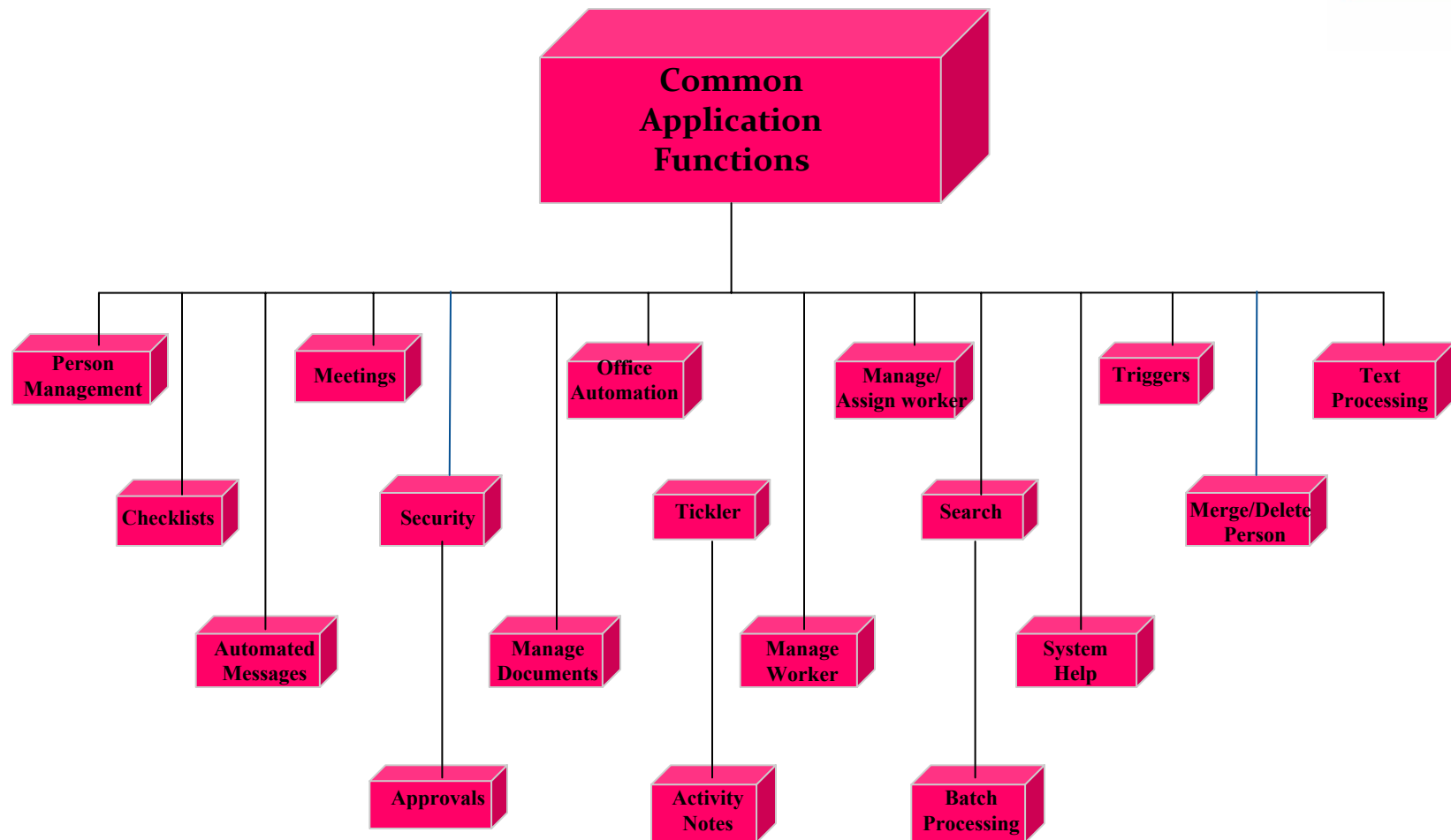


# Financial Management



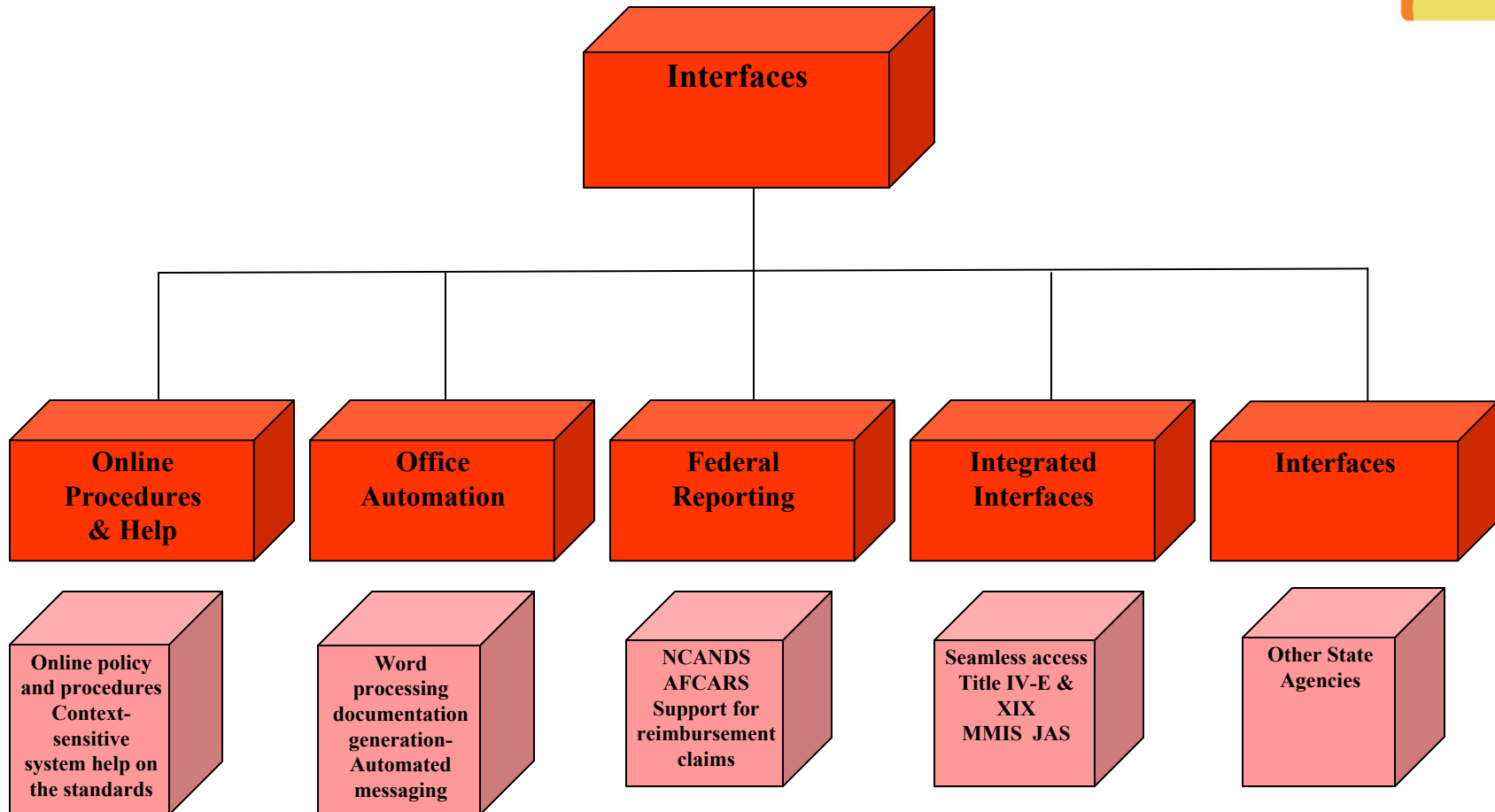


# Common Application Functions





# Interfaces





# FY10 Funding Request

| C-2 Name                                    | Funding Request  | Business Risk  |
|---|------------------|--|
| FACTS Programming Support                   | \$3,105.8        | Beginning in FY10, CYFD will be exposed to penalties, disallowances and legal fees reaching \$2-\$6 million relating to CFSR/PIP and ACLU. This calculates to ~\$34 million over five years. |
| COTS – Medical and Behavioral Health (BEHR) | \$1,366.1        | Beginning in FY10, CYFD will be exposed to legal fees in excess of \$2 million relating to ACLU. Legal fees will reach ~\$18 million over five years.  |
| FACTS Web Solution – Pre-Planning           | \$519.6          | Develop a plan now to migrate FACTS to a web-based system to avoid maintenance, integration and service delivery risks related to a near 12 year old legacy system.                          |
| <b>Total Request</b>                        | <b>\$4,991.5</b> |  |