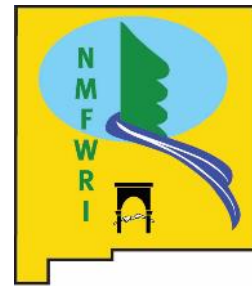


# New Mexico Landscape Assessment Tool

Joe Zebrowski

New Mexico Highlands University

New Mexico Forest and Watershed Restoration Institute



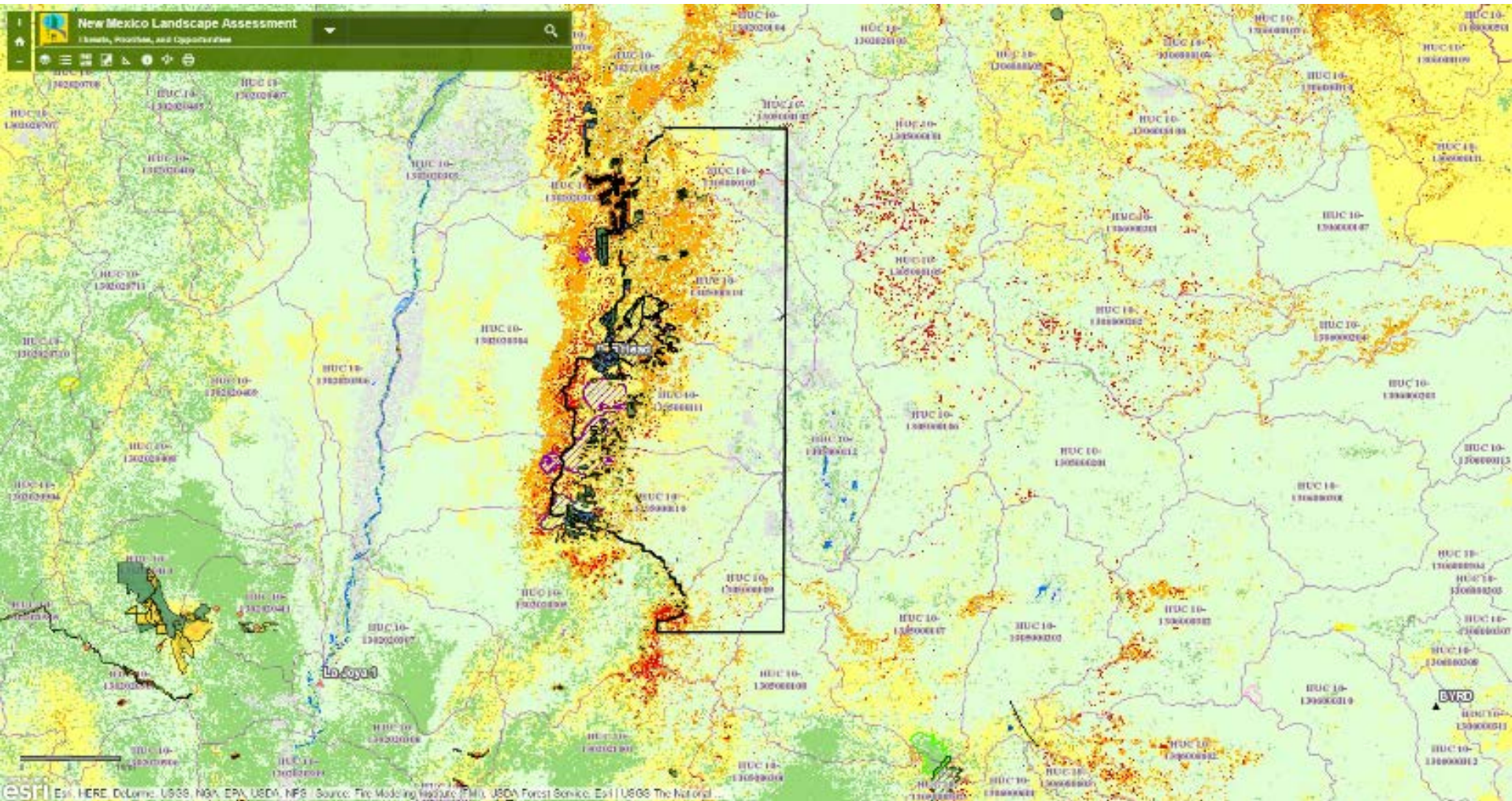
# What is the Landscape Assessment Tool?

- Displays and summarizes landscape characteristics from multiple geographic databases
- User friendly interface
- Curated “One-stop” for locating and viewing information
- *A concept (based in reality)*

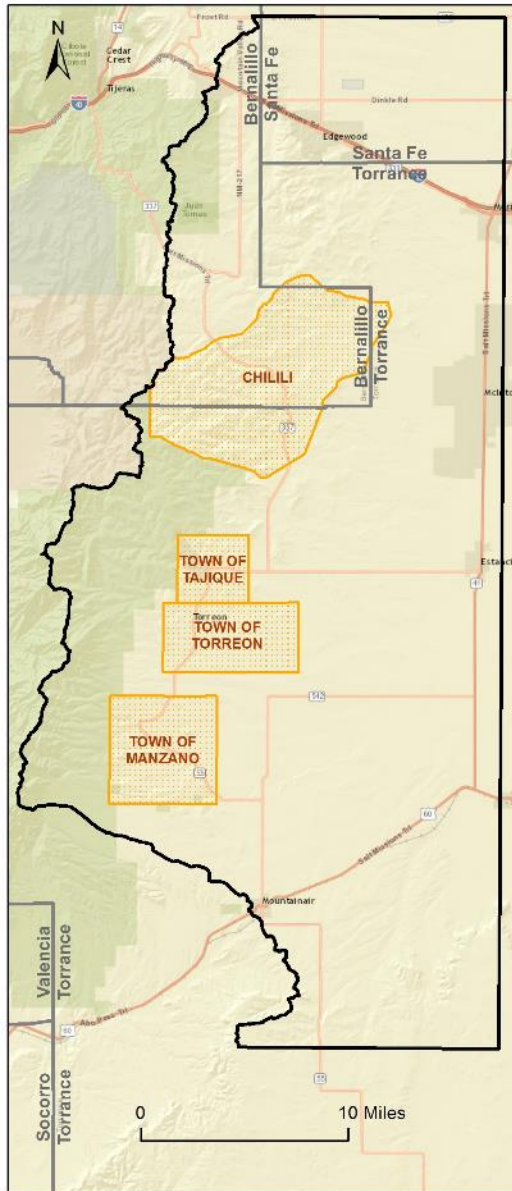
*Enhances collaboration by providing a common view of landscape threats, priorities, and opportunities.*

Criteria		Description	Score	
<a href="#">Watershed Condition Class Framework (USFS)</a>		Watershed condition is the state of the physical and biological characteristics and processes within a watershed that affect the soil and hydrologic functions supporting aquatic ecosystems. <a href="http://www.fs.fed.us/sites/default/files/Watershed_Condition_Framework.pdf">http://www.fs.fed.us/sites/default/files/Watershed_Condition_Framework.pdf</a>		<b>81%</b> <b>19%</b> <b>0%</b>
<a href="#">Water Sources (NMED)</a>		Location of drinking water sources. From NMED, Jan 2014, via The Nature Conservancy.		<b>53 GW</b>
<a href="#">Priority Landscapes Composite (NMSF)</a>		New Mexico State Forestry has created a draft of priority landscapes to show areas where we would like to focus future projects based on a spatial analysis of mitigated threats and benefits to be achieved from Forestry projects. This dataset is meant to be a guideline, and a starting point for deciding where to focus funds on the ground. <a href="http://allaboutwatersheds.org/groups/fwhcg/public/new-mexico-state-forestry-draft-priority-landscapes-overview-of-data-and-methods-utilized">http://allaboutwatersheds.org/groups/fwhcg/public/new-mexico-state-forestry-draft-priority-landscapes-overview-of-data-and-methods-utilized</a>		<b>Medium Priority</b>
<b>State Forestry Action Plan (NMSF)</b> <a href="http://www.emnrd.state.nm.us/SFD/statewideassessment.html">http://www.emnrd.state.nm.us/SFD/statewideassessment.html</a>	<a href="#">Development Potential (Risk)</a>	This data layer emphasizes areas that are projected to experience increased housing development in the next 30 years. This layer will be used in the State Strategy and Response plan to help emphasize areas which will conserve working forests.		<b>0</b>
	<a href="#">Forest Health</a>	Forest Health Risk: This data layer identifies areas that make a forest area more susceptible to insect and disease outbreaks. This layer will be used in the State Strategy and Response plan to help prioritize areas where management of threats to forest health is most needed.		<b>Medium</b>
	<a href="#">Water Quality and Supply</a>	This data layer identifies watersheds important for supplying sustainable water supply along with the potential risks to supplying clean water. This layer will be used in the State Strategy and Response Plan to help emphasize areas which will enhance public benefit from forested areas.		<b>3</b>
	<a href="#">Fire Risk</a>	This data layer identifies areas with a relatively high risk of destructive wildfire. The intent of this layer is to identify areas where forest management is most likely to reduce the risk of wildfire damage (or reduce the impact of wildfire on natural resources, and human infrastructure and development). This layer has been developed for the State Strategy and Response Plan to help prioritize areas which will minimize potential and reduce impact of wildfire.		<b>3</b>
<a href="#">Debris Flow (TNC)</a>		Combined classification of probability and volume of a post wildfire debris flow from the Nature Conservancy, 2016.		<b>2.3</b>
<a href="#">Wildfire Hazard Potential – 2014 (USFS)</a>		Relative potential for wildfire that would be difficult for suppression to contain. Areas mapped with higher wildfire potential values represent fuels with a higher probability of experiencing torching, crowning, and other forms of extreme fire behavior under conducive weather conditions, based primarily		

First draft of concept: <http://arcg.is/2dmkmiY>



# Western Estancia Basin Landscape



## Quick Facts:

542,950 acres

NM Senate Districts 19 & 39  
NM House Districts 22, 50, & 70

U. S. Congressional Districts 1 & 3

Political Jurisdictions: Bernalillo County, Santa Fe County, Torrance County

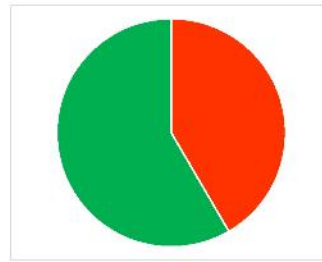
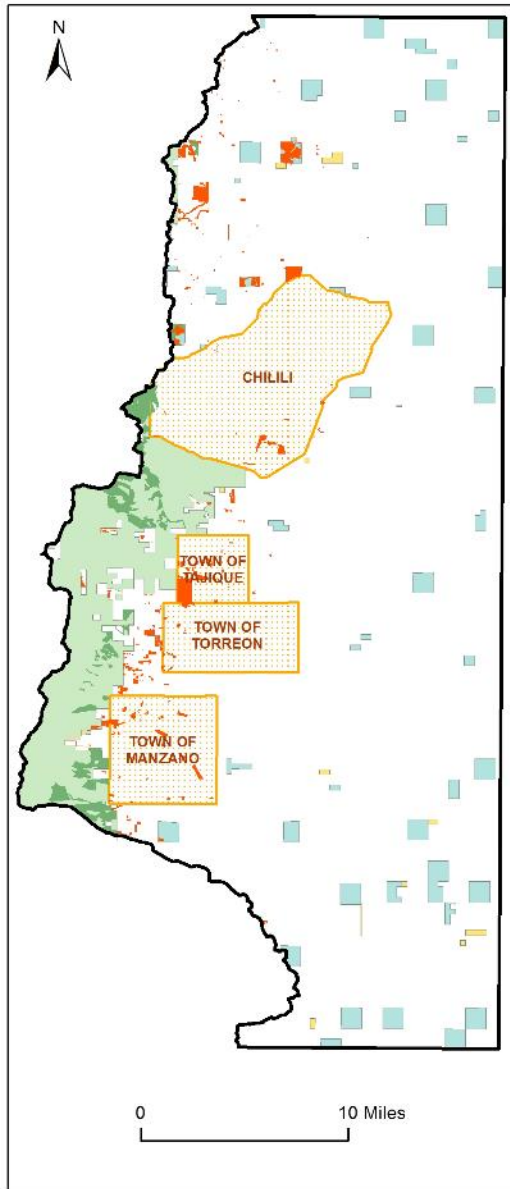
Ciudad SWCD, Edgewood SWCD, East Torrance SWCD, Claunch-Pinto SWCD

Land grants: Chilili, Tajique, Torreon, Manzano

Population (2016): 25,615  
MHI (2016): \$50,500



# Treatments



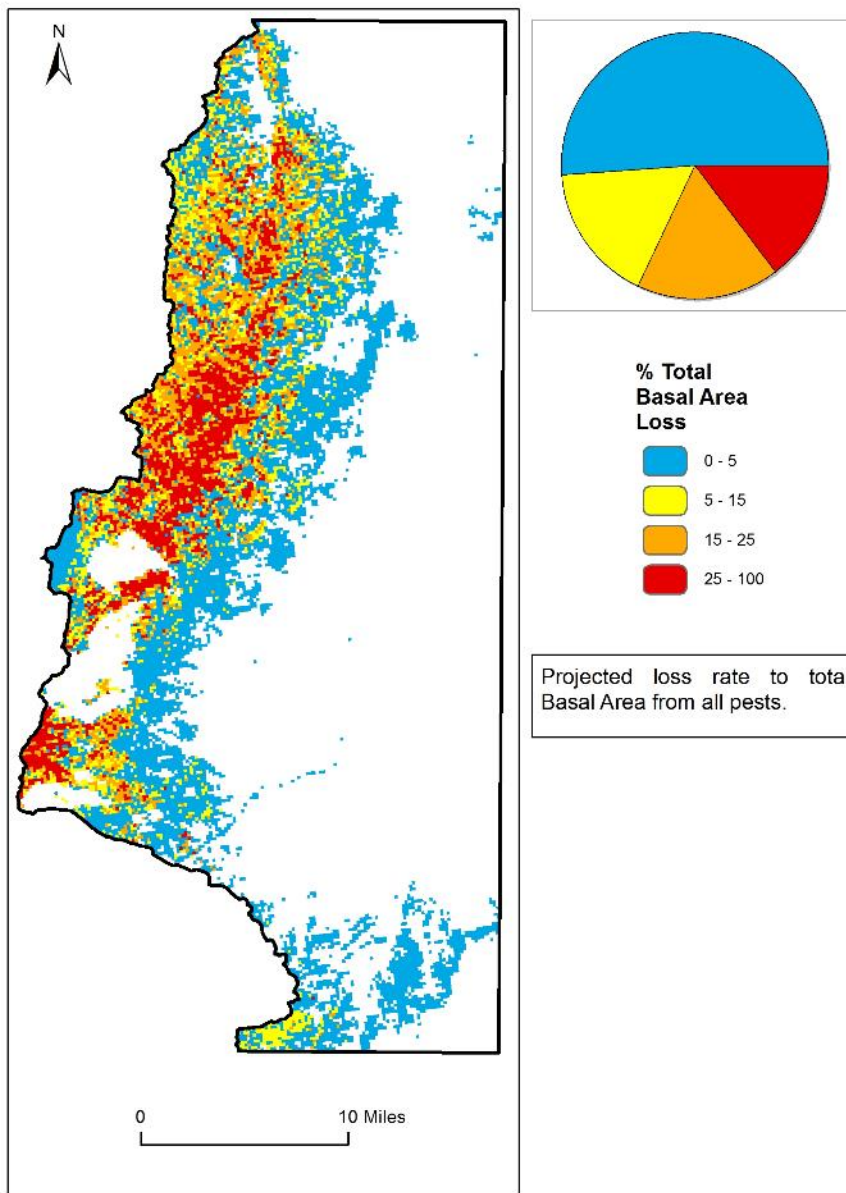
- U. S. Forest Service Treatments
- Private and State Lands Treatments
- Land Grants
- Private
- Forest Service
- State
- Bureau of Land Management

Private and State Lands Treatments:  
513 projects, 2005 – 2015  
\$5.1M WTB, NFL, WUI  
5,840 acres

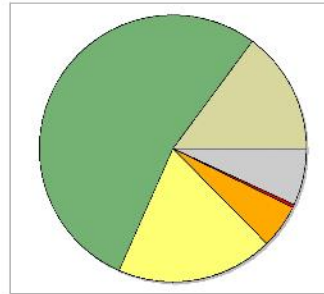
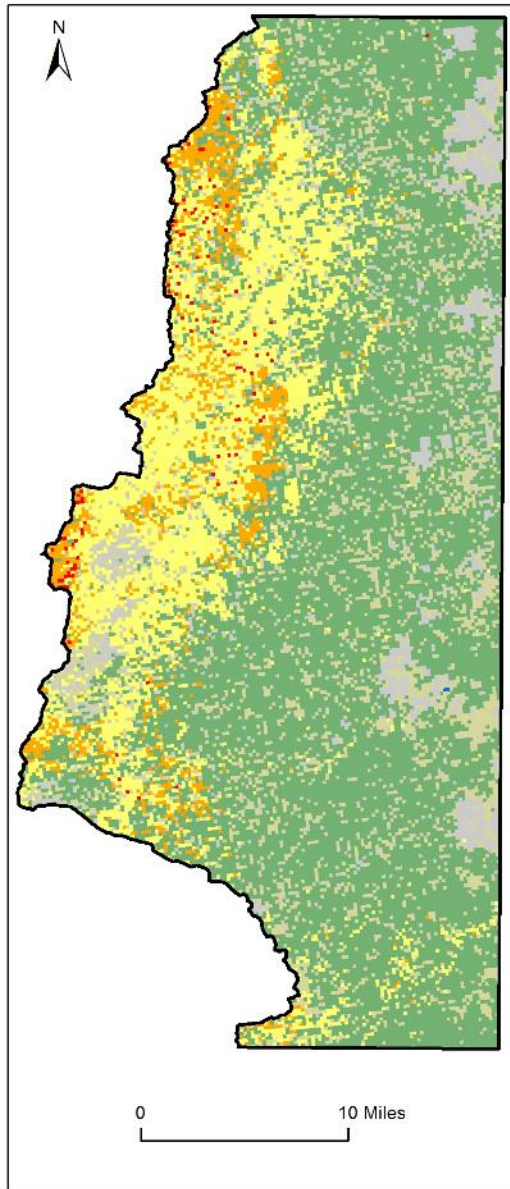
USFS Lands Treatments:  
48 projects, 2006 – 2015  
7,536 acres

Total Treated: 14,040 acres

# 15 year (2013 - 2017) Projected Risk from Forest Insect and Diseases



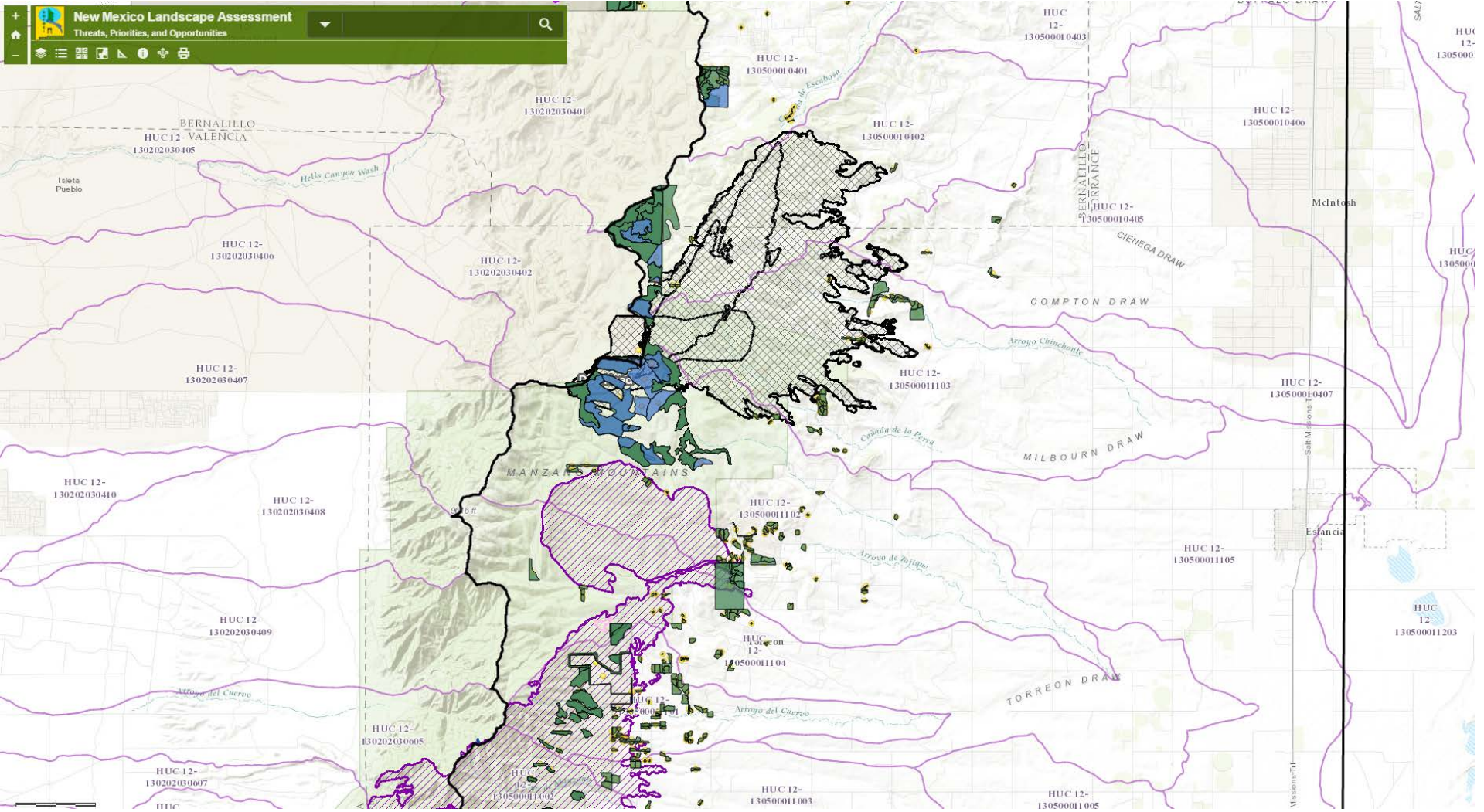
# Wildfire Hazard Potential



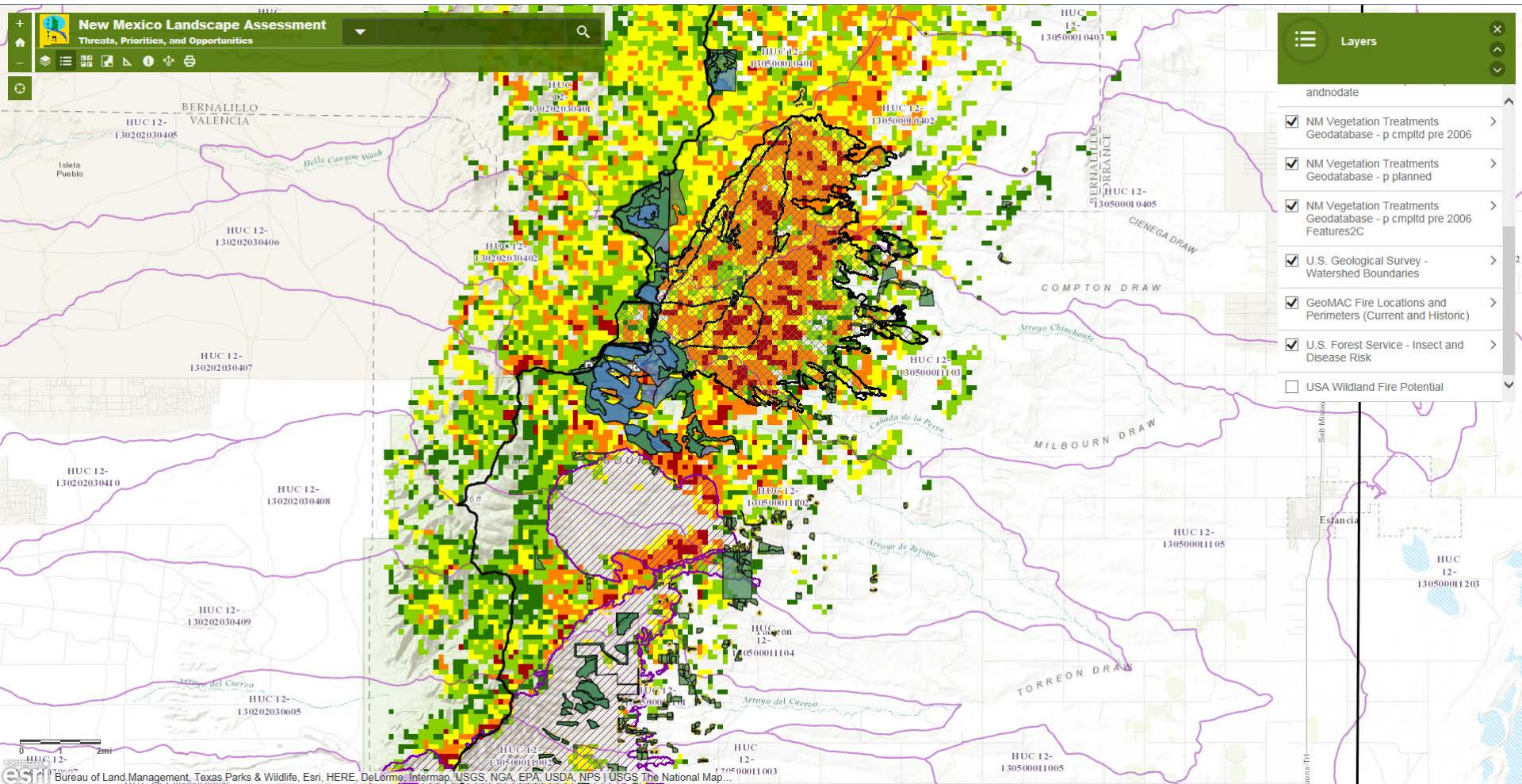
- 1: Very Low
- 2: Low
- 3: Moderate
- 4: High
- 5: Very High
- 6: Non-burnable
- 7: Water

Relative potential for wildfire that would be difficult for suppression to contain. Areas mapped with higher wildfire potential values represent fuels with a higher probability of experiencing torching, crowning, and other forms of extreme fire behavior under conducive weather conditions, based primarily on 2010 landscape conditions.

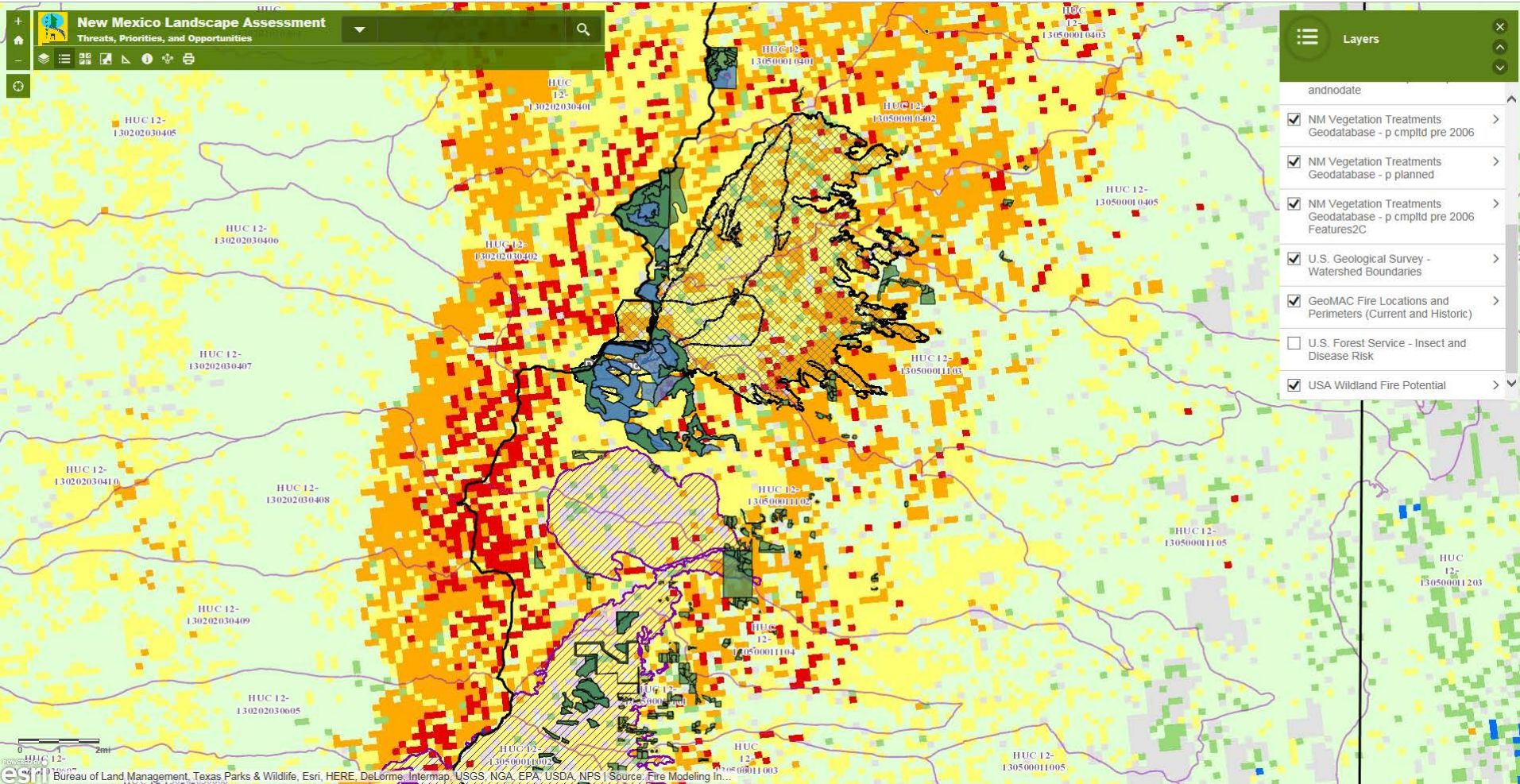




# Bug & Rot Risk (USFS): <http://arcg.is/2dmkmiY>



# Wildland fire potential (USFS): <http://arcg.is/2dmkmiY>



# First draft of concept: <http://arcg.is/2dmkmiY>

