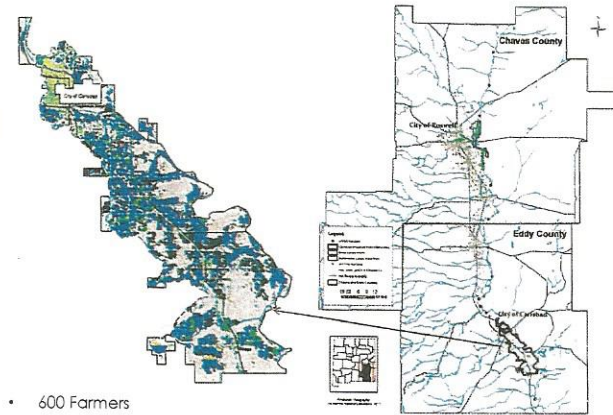


Pecos River Issues for Carlsbad Irrigation District

Dale Ballard
Treasurer - Manager
Carlsbad Irrigation District
October 2, 2018

Carlsbad Irrigation District

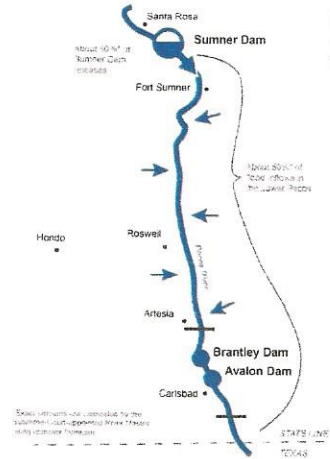
Crop	2010 Acreage
Alfalfa	13,624
Cotton	1,226
Wheat	420
Corn	493
Pecans	480
Sorghum	198
Total	16,442



- 600 Farmers
- 25,055 Acres

The Compact & USSC Decree Require:

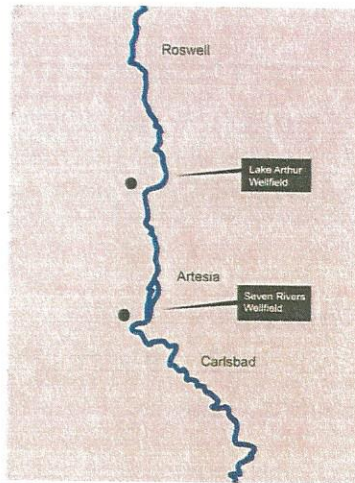
- Deliveries to Texas calculated on a calendar-year basis
- Use of the Supreme Court River Master's Manual & decisions
- Rapid "repayment" of any net shortfalls



Settlement Objectives of NM and CID

- Permanent compliance with the Pecos River Compact and Decree by delivering 10,000 AFA
- Increased and stable water supply for Carlsbad Irrigation District
- Reduced likelihood of a priority call on the Pecos River
- Bring basin back into hydrologic balance

Augmentation Well Fields



Annual Triggers for Well Field Operation

(in terms of Project Supply available to CID)

- March 1 <50,000 AF (Determined Nov. 1)
 - May 1 <60,000 AF (Determined Mar. 1)
 - June 1 <65,000 AF (Determined May 1)
 - July 15 <75,000 AF (Determined June 1)
 - Sept. 1 <90,000 AF (Determined July 15)
- Predictions for 2019 55,000 – 70,000 AF available for delivery.

Wellfield Issues

- Wellfield part of an overall strategy by the state along with purchase and retirement of river pumpers, retirement of lands in Roswell Artesian Basin and purchase and retirement of 20 % of CID Project acreage.
- Wellfield undersized for extreme drought conditions.
- Well maintenance and capacity has been a recurring problem.
- New applications to divert surface water from the Pecos River has drawn protests from ISC, CID, PVACD, City of Carlsbad, Lea County, Otis Mutual Domestic.

Applications on the Pecos River Basin

- Total number of applications: 11
- Total number of acre feet sought: **15,051.34**
- Number of applications to which CID protested: 9
- Total # of acre feet protested: 12,950
- Total # of acre feet Pecos Settlement targeted to deliver to the state line: **10,000**
- Effect on credit with Texas; future State Line Delivery and effect on CID water available for next year's allocation to be determined...