

WHY WE SUPPORT MOVING THE THE QUIVIRA (KERR-MCGEE) CHURCHROCK URANIUM MINE WASTE TO THE RED ROCK LANDFILL

Red Water Pond Road Community Association and Pipeline Road Community

May 2024



- We live between two of the largest abandoned uranium mines on the Navajo Nation and just around the corner from the UNC uranium mill tailings disposal cell – the site of the July 16, 1979 Tailings Spill.
- Some 50 homes in RWPRC and Pipeline Community surround the Quivira Churchrock I and IE Mine (map at right).
- We've occupied our homeland for at least 100 years across four generations, and our families are sick from their exposures.
- Quivira Mine wastes – about 1 million cubic yards – sit at the bottom of a steep slope, and cannot be capped in place safely for permanent containment.
- For decades, we have fought to have these all uranium wastes removed from our community.

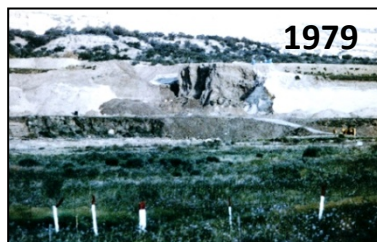
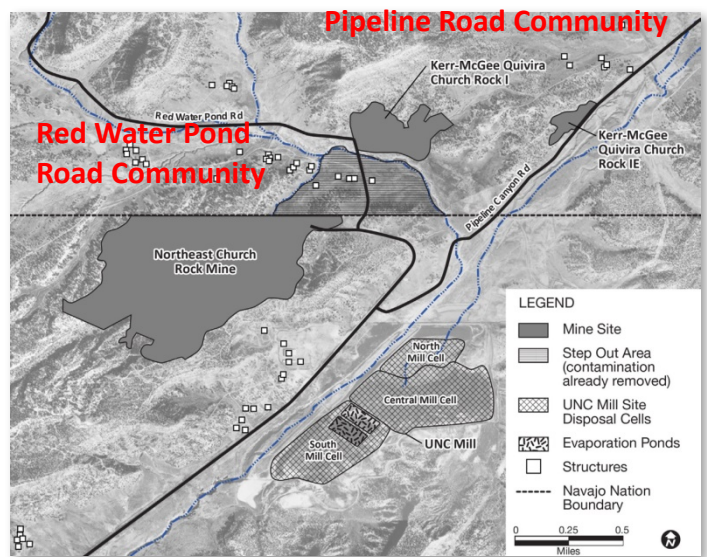
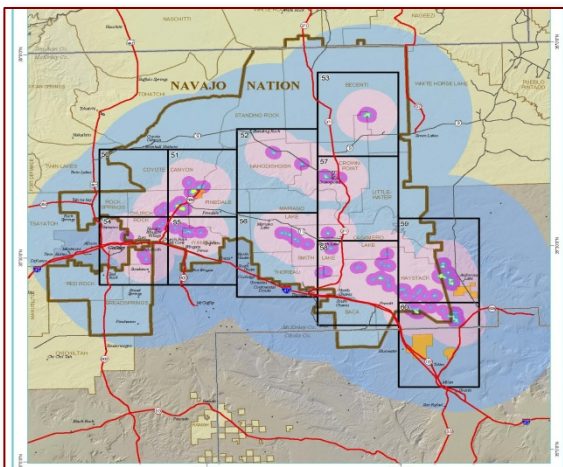
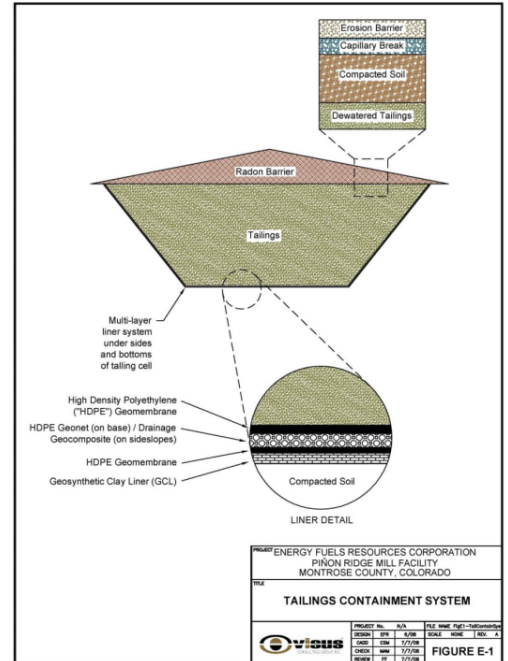




Photo by Susan Gordon

Advantages of Red Rock Landfill (RRL)

- The RRL property would provide a permanent and safe place to dispose of mine wastes from dozens of sites in the Eastern Agency. The site has many advantages:
 - Away from people; few homes within 1 mile of the site
 - On private land, owned by Northwest New Mexico Regional Solid Waste Authority
 - Serves trash collection needs of Cibola and McKinley counties and *the entire Navajo Nation*
 - Has plenty of room to construct an engineered disposal “cell” (diagram at right), whose design would be based on NRC's “prime option” for uranium mill tailings
 - Mine wastes would not be mixed with municipal wastes
 - Site topography minimizes erosion from wind and water
 - Groundwater is more than 350 feet from surface



Many people who live next to these sites want them removed to protect the health of current and future generations.

- More than 100 abandon mines impact families and communities throughout the Eastern Agency and Grants Mineral Belt (map at left).
- **Mine wastes are not acutely hazardous:**
 - DRY dirt and rocks
 - Uranium was mostly removed
 - NOT high-level nuclear wastes
 - NOT the highly radioactive “transuranic wastes” that are being disposed of at WIPP near Carlsbad.
 - Trucks hauling mine wastes will be covered
- USEPA and other federal, tribal and community stakeholders should *examine alternative transportation routes that avoid trucks traveling through Thoreau*

Please visit our communities to see the Quivira waste dump and Northeast Church Rock Mine. For more info, call Edie Hood at 505-905-0694 or Larry King at 505-979-1411.