



Santa Teresa Regional Infrastructure Impacts

- Union Pacific Santa Teresa Terminal (intermodal facility)
- Industrial Development
 - Westpark Development
 - Los Santos Industrial Parks (binatl. Comm.)
- CBP Pilot Project: dual customs
- Santa Teresa LPOE

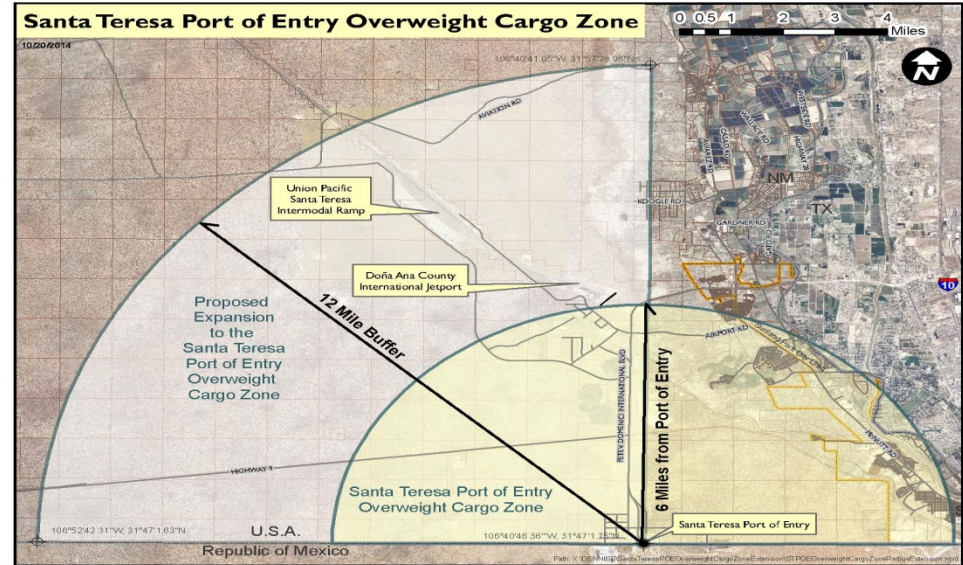




Santa Teresa Regional Infrastructure Impacts

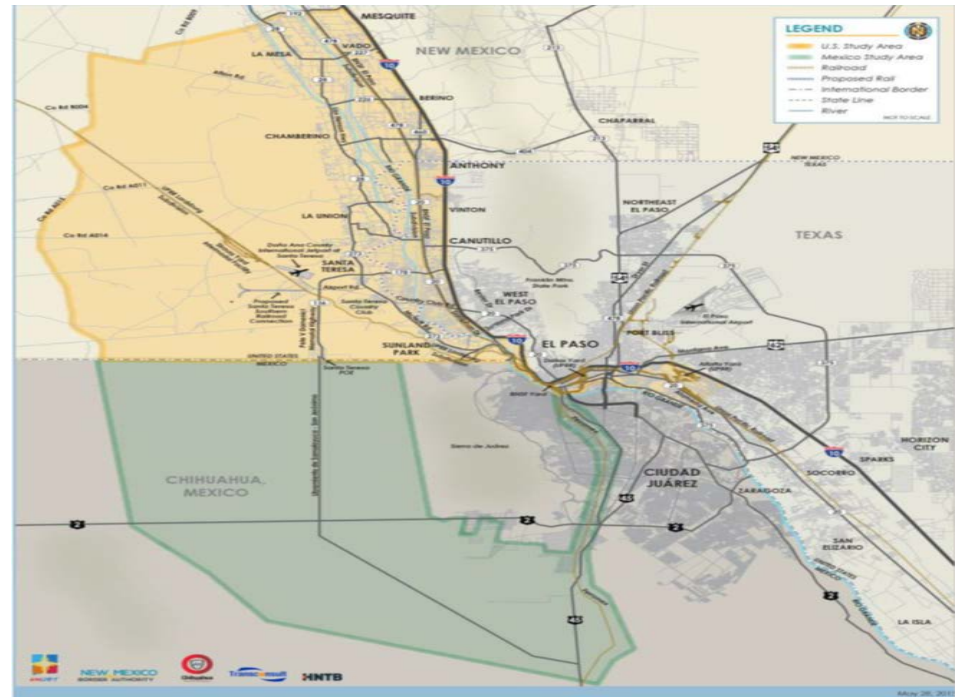
Overweight Cargo Zones

- Santa Teresa & Columbus LPOEs.
- Commercial Vehicles up to 96,000 lbs.



Rail Bypass Study

- Construct new rail bypass between New Mexico and Chihuahua.
- Freight corridor connectivity between truck and rail.
- Eliminate rail operation conflicts in urban areas of Cd. Juarez-El Paso.
- Rail crossing – heavy industrial development, commercial vehicle POE.



Santa Teresa Industrial Development Impact



- Fed Ex: distribution center 215,000 s.f. (120-200 trucks/day)
- Valley Cold Storage facility: 300,000 s.f. (15-20 trucks/day)
- Wind Blade storage facility: 53 acres, increase in production requiring more storage space
- MCS Industries: 200,000 s.f. (20-30 trucks/day)



Santa Teresa LPOE





Columbus LPOE

- New \$96 million CBP inspection facility.
- Dedicated POV inspection lanes.
- New commercial vehicle export & import crossings.
- Construction to begin January 2017, estimated completion date March 2019.



Antelope Wells LPOE

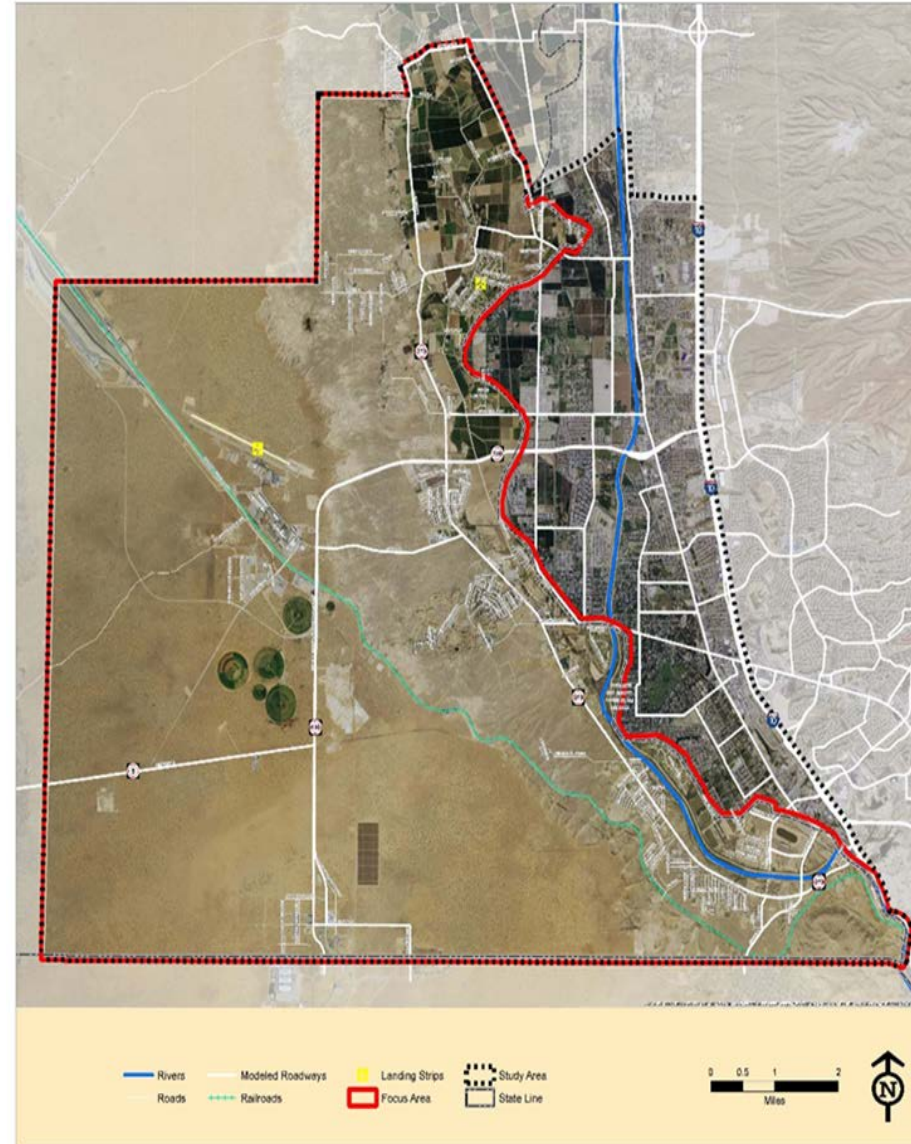
- New \$11 million CBP facility, 2012.
- El Berrendo Road Paving to Hwy 2 (11 km).
- 20 Hectares (50 acres) donated for El Berrendo, Mexico port development.



NMDOT PROJECTS

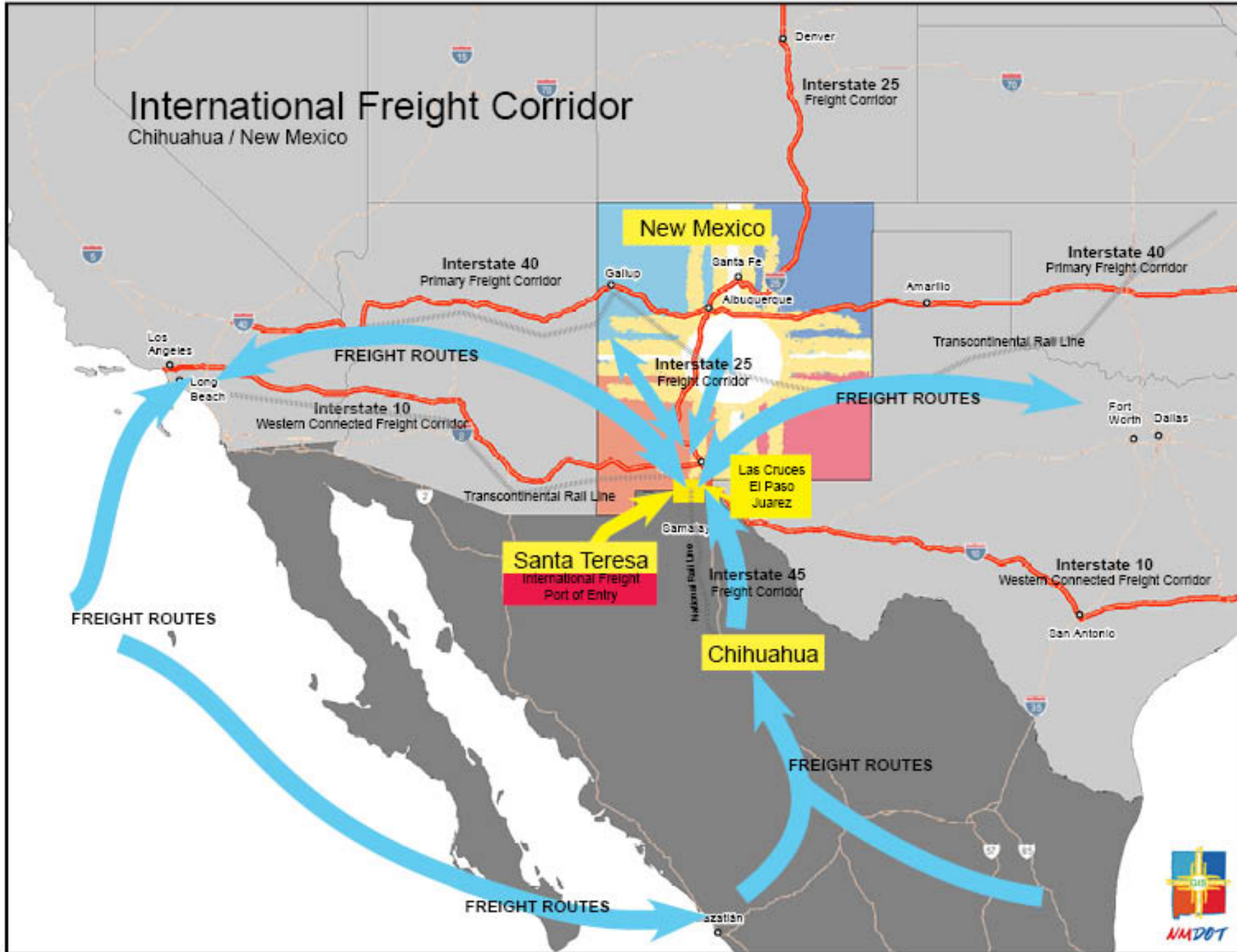


- Transportation Infrastructure Assessment and Strategic Plan-STBAT
 - Comprehensive needs assessment to prioritize transportation infrastructure within region)
- West Mesa Corridor Study
 - West Mesa Road corridor between Pete Domenici Highway (NM 136) to Interstate 10 West in Dona Ana County.
- New Mexico-Chihuahua Border Master Plan
 - Create a workable plan for prioritizing and advancing LPOE and related transportation projects
- Border Wait Time Analysis
 - Northbound commercial truck analysis, Integrate with Border Crossing Information System



International Freight Corridor

Chihuahua / New Mexico



NMDOT



Summary

- International Trade - increase in POV and Commercial Vehicle traffic, impact on roads and highways.
- Industrial development – attracts more development & vehicle traffic.
- Continue coordination with Bi-national government agencies.
- Continue collaboration with New Chihuahua Administrations.

