



www.myArmyOneSource.com | www.AOSResourceCenter.com

New Mexico

Estimated Separations from Service

January 2015 – May 2017

Data provided by the Department of
Defense Manpower Data Center (DMDC)

Key Points

- Data is provided through Army OneSource
- Data source: Defense Manpower Data Center (DMDC)
- Estimated Time of Separation (ETS) between January, 2015 – May 31, 2017
- Last reported home mailing address
- Officers with more than 18 years of service and all enlisted Service members

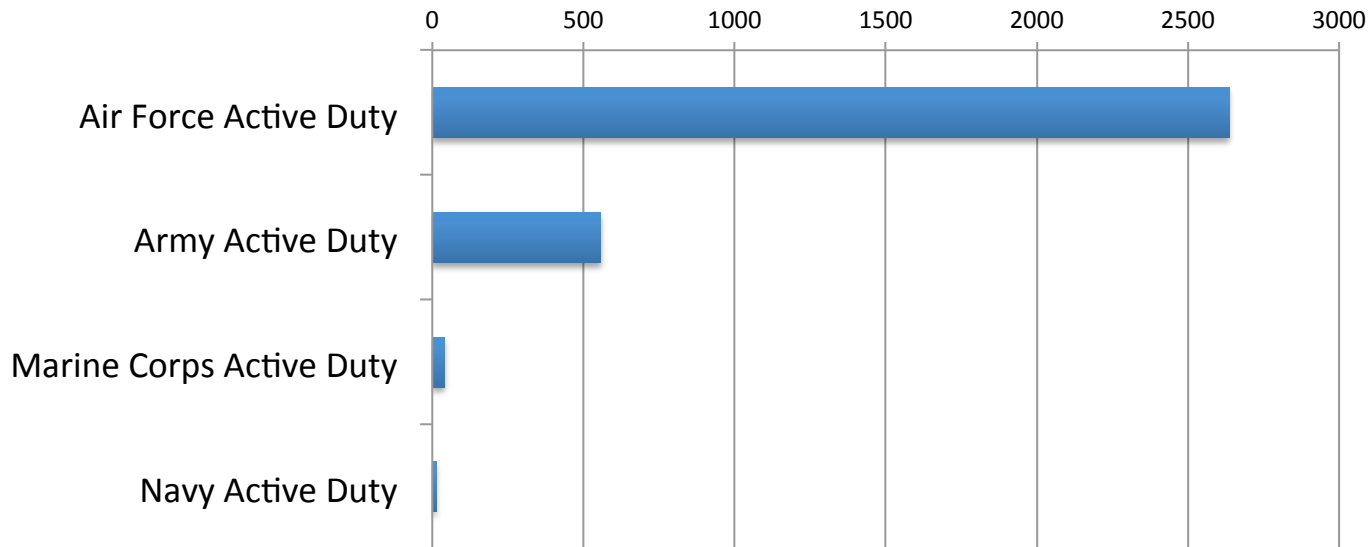


Enlisted Active Duty Personnel – All Services

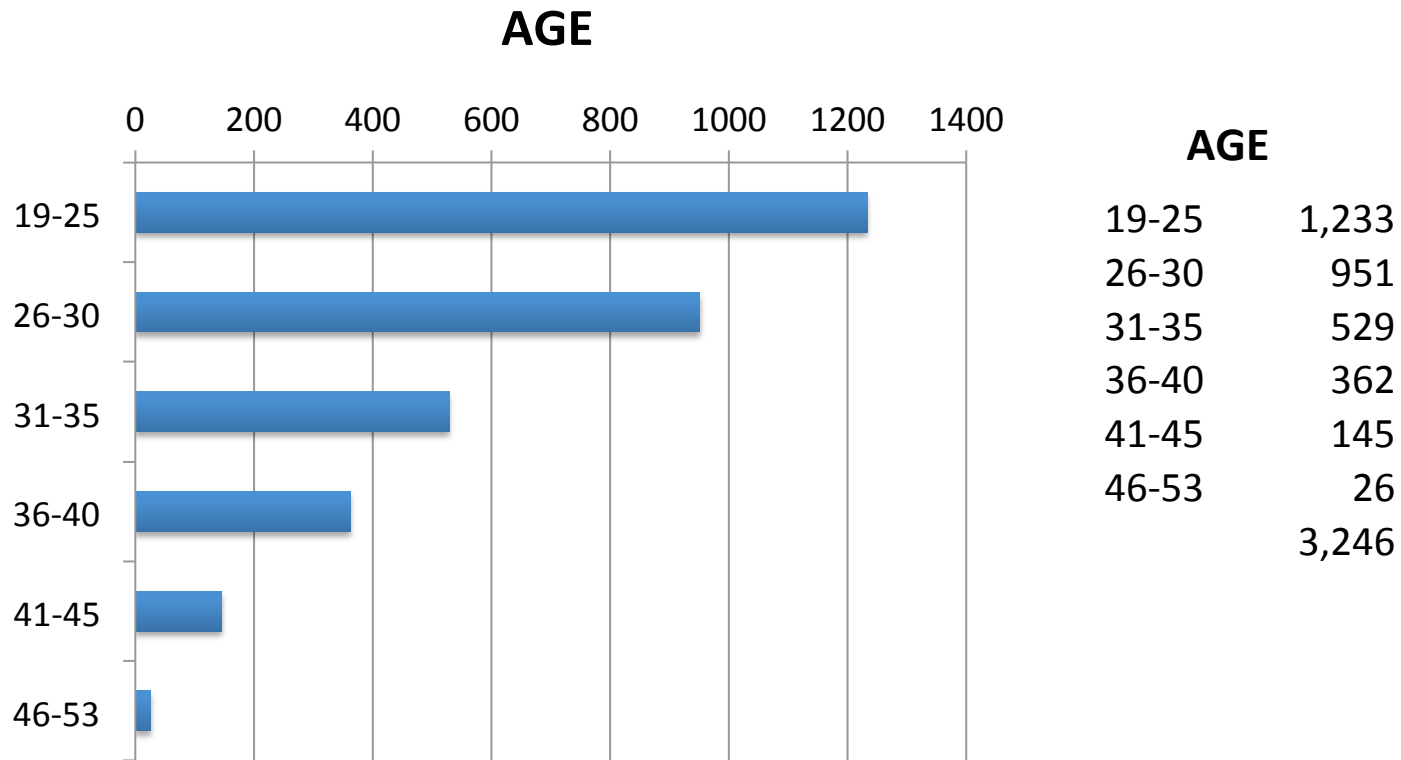
3,246 estimated separations January 1, 2015 - May 31, 2017

Air Force	2,636
Army	557
Marine Corps	40
Navy	13
Total	3,246

Estimated Separations



Enlisted Active Duty Personnel – All Services



Enlisted Active Duty Personnel



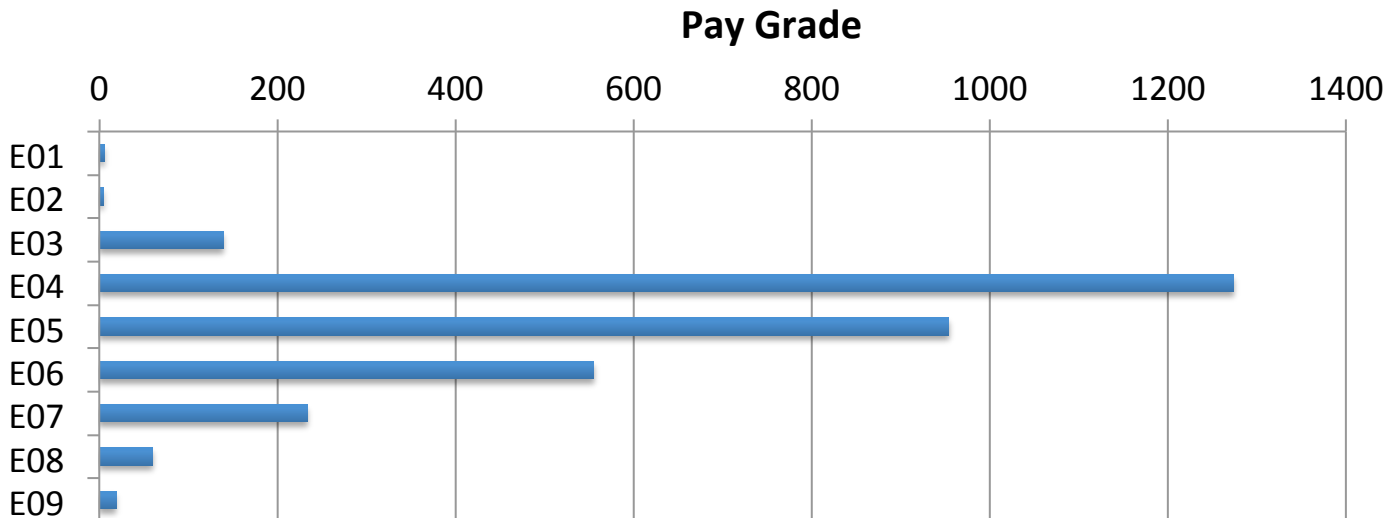
Enlisted Active Duty Personnel – All Services

Pay Grades	Number	Monthly Income*
E01	6	1,567
E02	5	1,756
E03	139	1,847
E04	1274	2,046
E05	954	2,232
E06	555	2,436
E07	234	2,816
E08	60	4,051
E09	19	4,949
Total	3,246	

Pay Grade

- 2016 U.S. Military Active Duty Basic Pay Charts

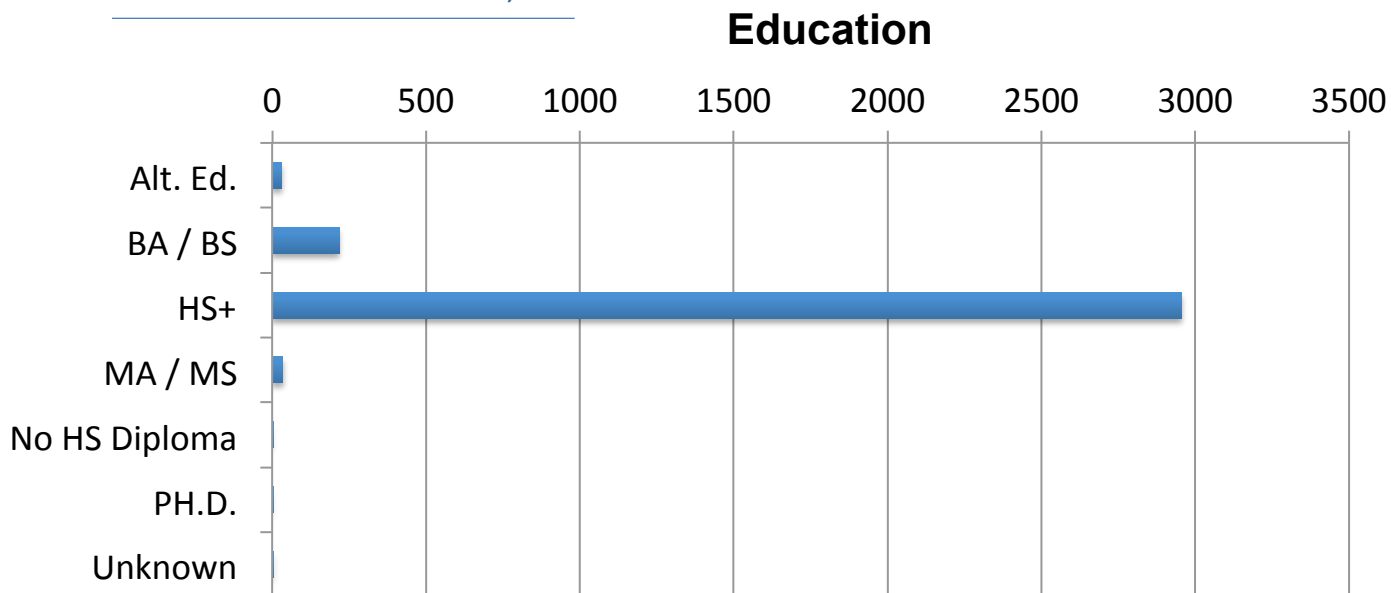
Monthly basic pay amounts are rounded to the nearest U.S. dollar and are for the active components of the Navy, Marine Corps, Army, Air Force, and Coast Guard.



Enlisted Active Duty Personnel – All Services

Highest Level of Education

Alt. Ed.	31
BA / BS	218
HS+	2954
MA / MS	35
No HS Diploma	2
PH.D.	1
Unknown	5
	3,246



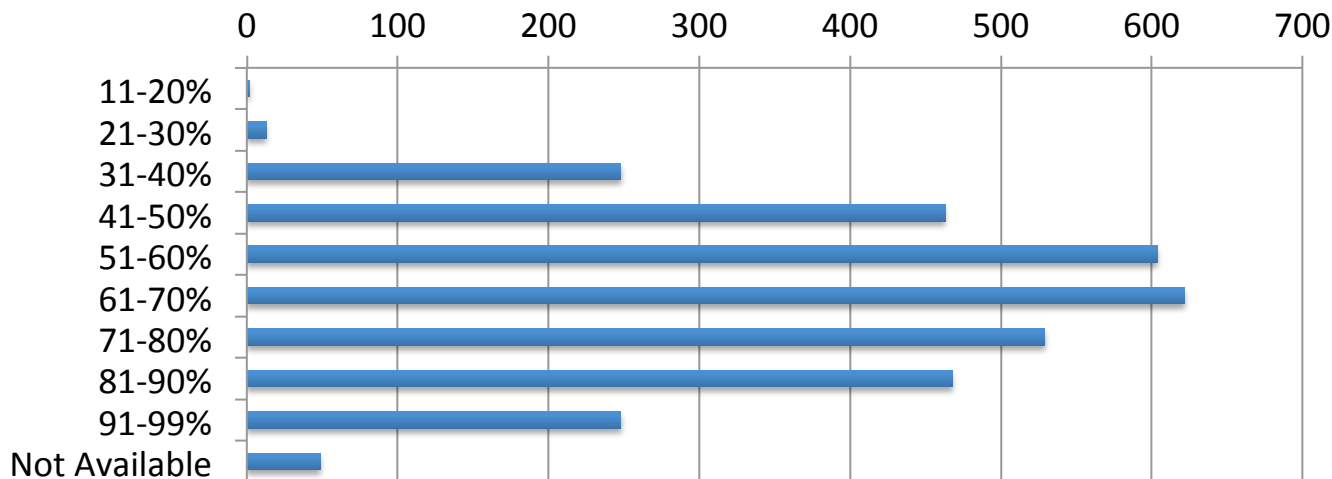
Enlisted Active Duty Personnel – All Services

AFQT Percentile

11-20%	2
21-30%	13
31-40%	248
41-50%	463
51-60%	604
61-70%	622
71-80%	529
81-90%	468
91-99%	248
Not Available	49
Total	3,246

The Armed Forces Qualification Test (AFQT) score is part of what determines if you are eligible to enlist in the military. You receive your AFQT score after completing the Armed Services Vocational Aptitude Battery.

AFQT Percentile



Enlisted Active Duty Personnel – All Services

Primary DoD Occupation

Communications and Intelligence Specialists	174
Craftworkers	165
Electrical/Mechanical Equipment Repairers	948
Electronic Equipment Repairers	377
Functional Support and Administration	415
Health Care Specialists	178
Infantry, Gun Crews, and Seamanship Specialists	429
Non-Occupational	6
Other Technical and Allied Specialists	107
Service and Supply Handlers	447
	3,246

Enlisted Active Duty Personnel

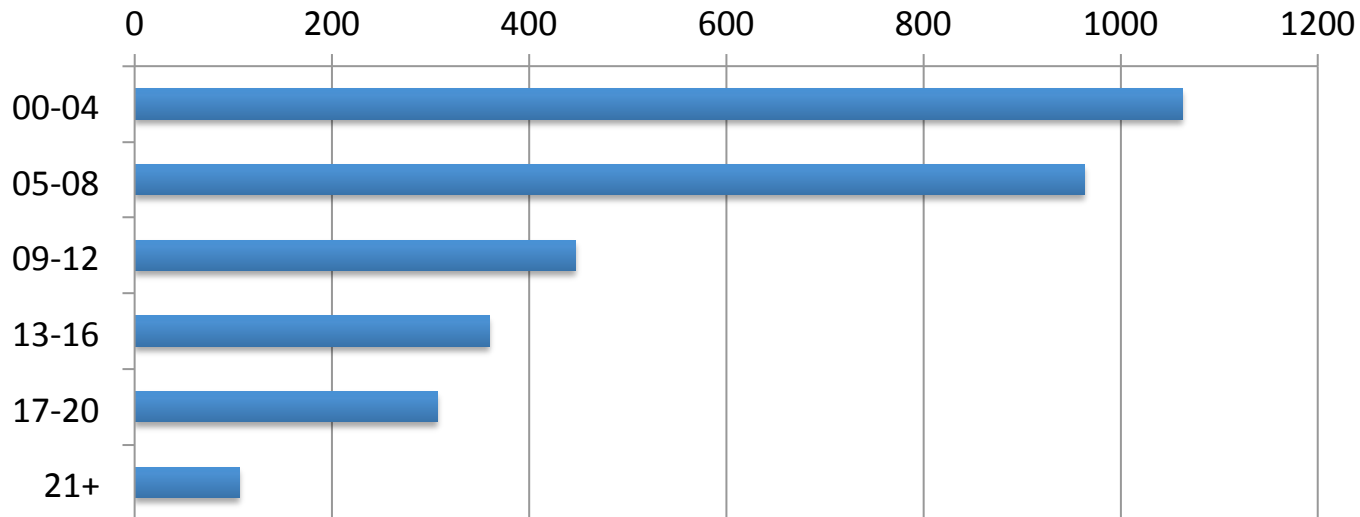


Enlisted Active Duty Personnel – All Services

Years of Service

00-04	1063
05-08	963
09-12	447
13-16	360
17-20	307
21+	106
	3,246

Years of Service

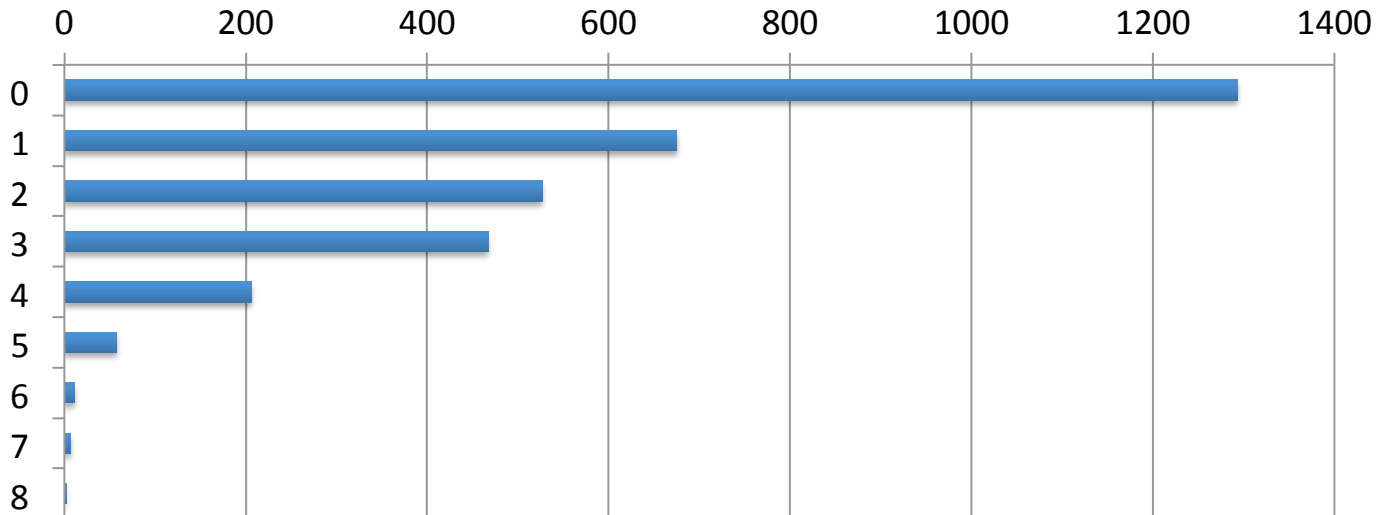


Enlisted Active Duty Personnel – All Services

Number of Dependents

Dependents	Enlisted	Dependents	Enlisted
0	1293	5	58
1	675	6	11
2	527	7	7
3	467	8	2
4	206		3,246

Number of Dependents



Active Duty Personnel – All Services

Officers

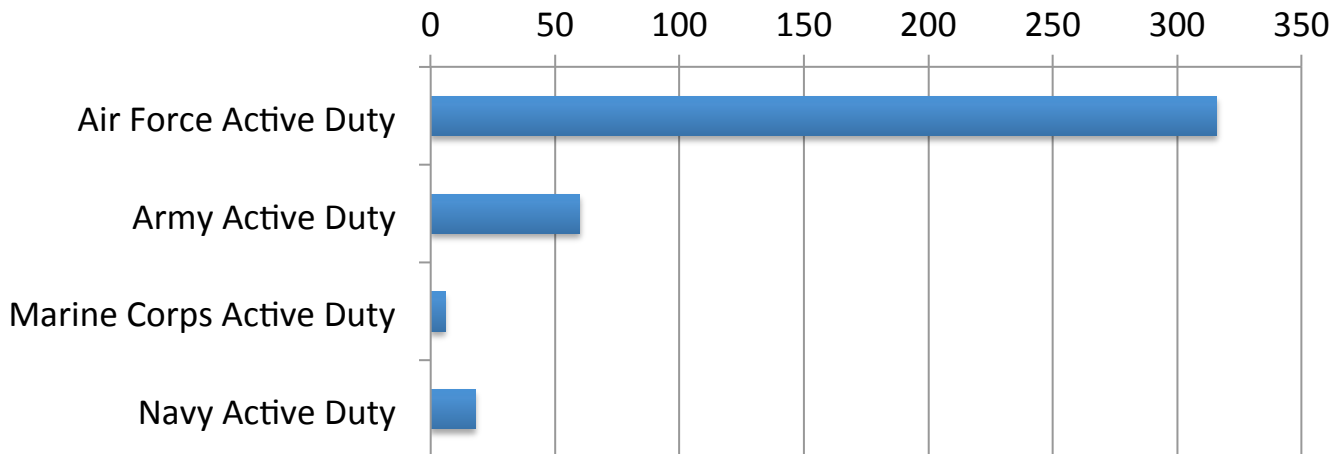
400 estimated separations January 1, 2015 - May 31, 2017

Represents officers with more than 18 years of service

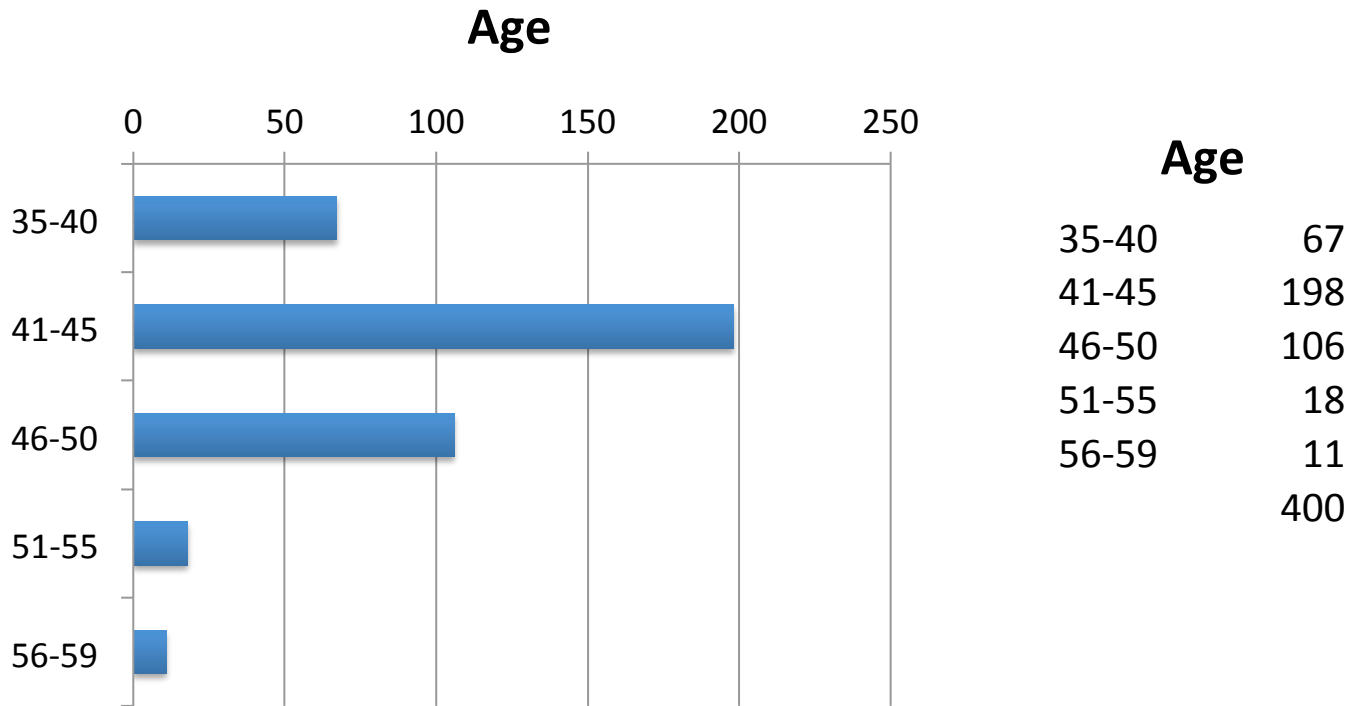
Service

Air Force	316
Army	60
Marine Corps	6
Navy	18
Total	400

Estimated Separations



Officers Active Duty Personnel – All Services



Officer Personnel Pay Grade

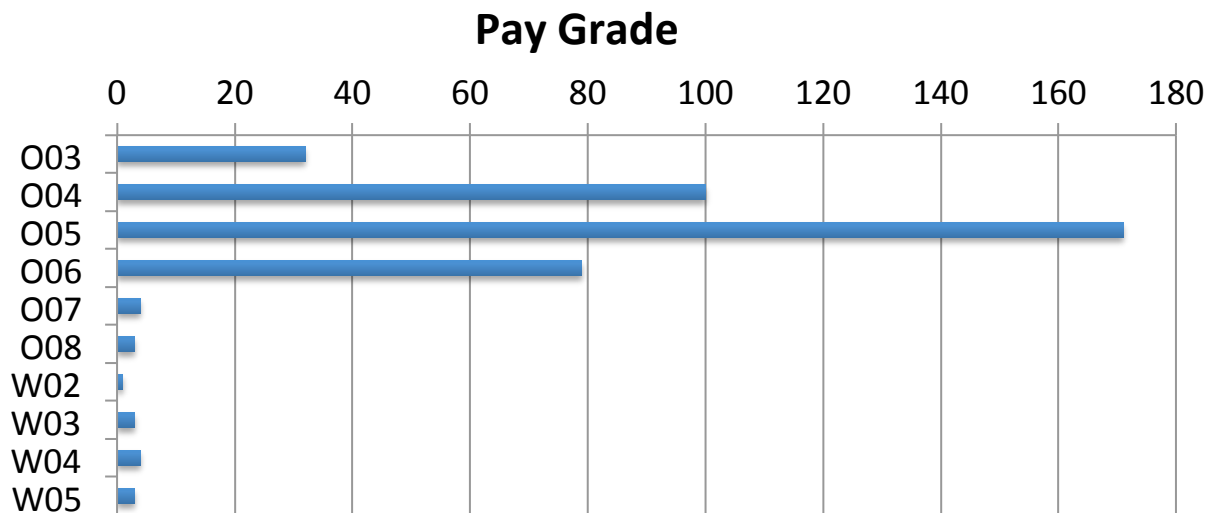


Officers Active Duty Personnel – All Services

Pay Grade	Number	Monthly Income*
O03	32	3,963
O04	100	4,508
O05	171	5,224
O06	79	6,267
O07	4	8,264
O08	3	9,946
W02	1	3,310
W03	3	3,740
W04	4	4,096
W05	3	7,283
Total	400	

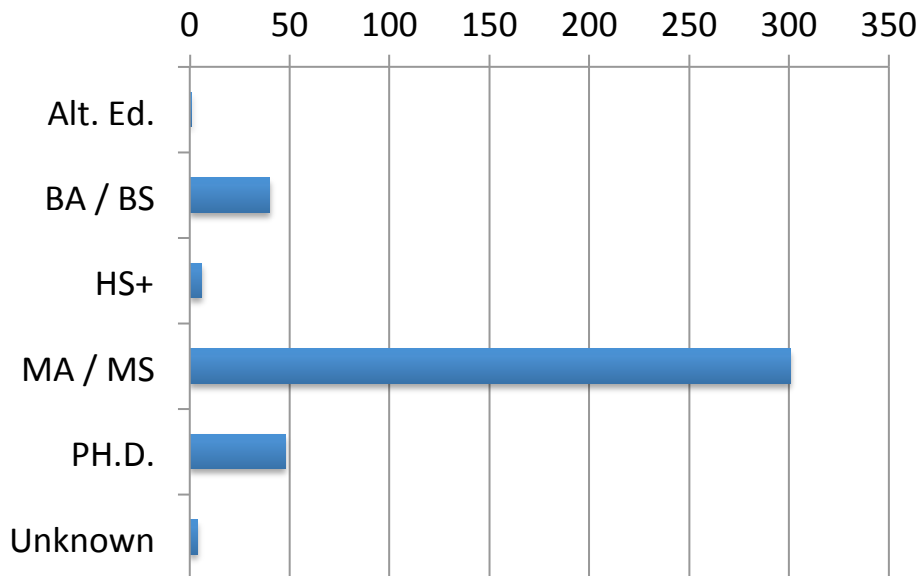
- 2016 U.S. Military Active Duty Basic Pay Charts

Monthly basic pay amounts are rounded to the nearest U.S. dollar and are for the active components of the Navy, Marine Corps, Army, Air Force, and Coast Guard.



Officers Active Duty Personnel – All Services

Highest Level of Education



Education

Alt. Ed.	1
BA / BS	40
HS+	6
MA / MS	301
PH.D.	48
Unknown	4
Total	400



Officers Active Duty Personnel – All Services

Primary DoD Occupation

Administrators	24
Engineering and Maintenance Officers	59
General Officers and Executives, N.E.C.	12
Health Care Officers	62
Intelligence Officers	10
Non-Occupational	1
Officer - Unknown Occupation	3
Scientists and Professionals	50
Supply, Procurement and Allied Officers	35
Tactical Operations Officers	144
Total	400

Officers Active Duty Personnel



Officers Active Duty Personnel – All Services

Dependents	Officers
0	34
1	49
2	82
3	126
4	64
5	34
6	9
7	2
Total	400

Number of Dependents

