



NEW MEXICO

ALLIANCE FOR
SCHOOL-BASED
HEALTH CARE

Redefining Health for Kids and Teens

What's New and Next for School Based Health Centers

October 2024

Nancy Rodriguez, NMASBHC Executive Director

NMASBHC: Who We Are

Mission: The New Mexico Alliance for School-Based Health Care represents school-based health centers (SBHCs) in New Mexico and collaborates with other partners to promote, facilitate and advocate for comprehensive, integrated, and culturally competent health care, including health education, in schools.

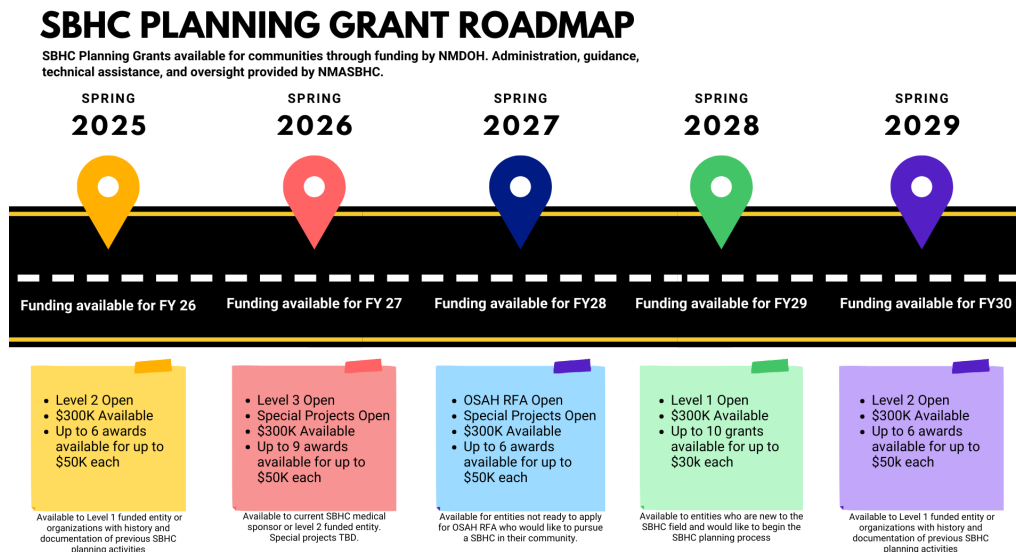
- Stand-alone 501(c)3 affiliated with national SBHA (www.sbh4all.org)
- NMDOH Contractor for TA for School-Based Health Care field
- Creating and disseminating tools for the SBH field
- Providing leadership in policy and advocacy for the SBH field

The SBHC Model

- Provide care in schools: a uniquely convenient and helpful access point
- Provide integrated primary and behavioral healthcare to children/youth
- Provide special expertise and resources to the school community
- Collaborate with school health partners, including nurses and social workers
- Improve health AND academic outcomes

SBHCs: Growth & Planning

- *Additional funding from the 2023 legislative session provided for an expanded number of contracts between NMDOH and SBHC Operators.
- *Schools with NMDOH-funded SBHCs increased from 53 in the 2022-23 school year to about 116 in the 2024-25 school year. There are another 23 SBHCs in the state that do not receive NMDOH funding.
- *While a few new brick/mortar SBHCs are opening (Moriarty, West Mesa, New Futures), the bulk of growth comes through expansion of telehealth & mobile.
- *Additional funding from the legislature has provided for the ability to support growing requests for new SBHCs with an organized planning grant and TA structure.



New SBHC Models & Populations: Telehealth, Mobile, & Early Childhood

- Telehealth – Longtime and New SBHC Operators Expanding Care via Hub and Spoke Model
 - El Centro Family Health
 - Sunrise Medical Services
- Mobile– Longtime and New SBHC Operators Expanding Care in Rural and Urban Communities with Clinics on Wheels
 - De Baca Family Health Services and REC IX
 - Bernalillo County with Health Equity Alliance
- Early Childhood – NMASBHC and OSAH collaborating, with Foundation Support, to Expand Care to 0-4 Pop to Capitalize on State Investments in Early Childhood & GRADS
 - Early Childhood Programs on School Campuses
 - Via Mobile and Telehealth Services

State and National Initiatives and Trends

NMASBHC and SBHA – Collaborative Efforts

- Collaboration with National Association of School Nurses, American School Counselor Association, National Association of Community Health Centers, National Center for School Mental Health, School Social Work Association of America, and National Association of School Psychologists
 - This includes work on everything from addressing the youth mental health crisis, to increasing school immunizations, addressing school health workforce shortages, increasing youth access to annual comprehensive wellness exams, and maximizing access to healthcare via MSBS expansion.
- Collaborative Fundraising to Address Healthcare Best Practice Expansion and Operational Challenges
 - New funding coming, through SBHA, from HHS-OMA to New Mexico and West Virginia to support pilot care coordination projects. In NM, partnerships with El Pueblo Family Health Services and Las Clinicas del Norte.
 - Funding proposal submitted, through SBHA, to support healthcare workforce initiatives that focus on everything from early education of youth to healthcare careers, including those pioneered by UNM, to loan forgiveness programs for healthcare providers willing to work in school health.

Closing

If you have additional questions or suggestions, please reach out:

Email:

Nancy Rodriguez, nancy@nmasbhc.org

Find resources, sign up for our newsletter, and more:
www.nmasbhc.org

THANK YOU FOR HAVING NMASBHC HERE TODAY!