

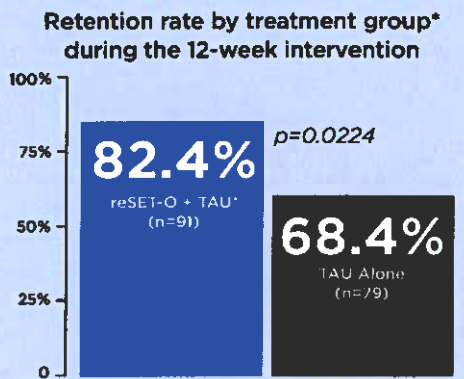
Recovery is an around-the-clock process

Give patients a discreet, 24/7 tool to complement remote or in-office addiction therapy.

reSET-O.

reSET-O®, for opioid use disorder, is the only FDA-authorized digital treatment that's proven to help patients stay in treatment longer.¹

Adding reSET-O to outpatient therapy using buprenorphine increased retention of patients with OUD by almost 15%!

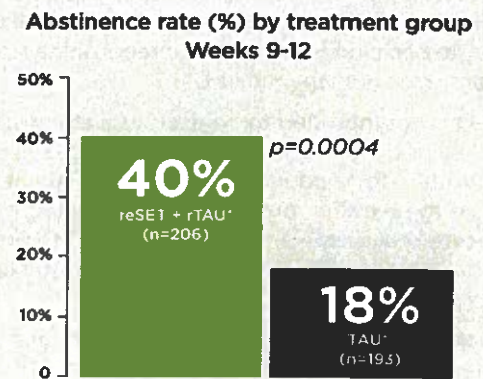


* Treatment as usual (TAU) consisted of transmucosal buprenorphine, outpatient therapy, and contingency management

reSET.

reSET®, for substance use disorder, is the first FDA-authorized treatment proven to increase abstinence and treatment retention.²

Adding reSET to outpatient SUD therapy more than doubled abstinence rates among patients whose primary addiction was not opioids.²



* TAU = treatment as usual consisted of outpatient therapy. rTAU = reduced TAU

Engage patients and clinicians to treat SUD & OUD

Patient Facing App

PROVIDES INTERVENTION^{1,2}



- Cognitive Behavioral Therapy (CBT) Modules
- Fluency Training
- Contingency Management
- Craving and Trigger Assessment

Pear.md Clinician Dashboard^{1,2}

PROVIDES INSIGHTS



- Real-World Engagement
- CBT Module Use
- Contingency Management
- Cravings and Triggers
- Urine Drug Screens and Appointments

Indications for Use and Important Safety Information

reSET-O® INDICATIONS FOR USE:

reSET-O is intended to increase retention of patients with opioid use disorder (OUD) in outpatient treatment by providing cognitive behavioral therapy, as an adjunct to outpatient treatment that includes transmucosal buprenorphine and contingency management, for patients 18 years or older who are currently under the supervision of a clinician. reSET-O is indicated as a prescription-only digital therapeutic.

reSET-O® IMPORTANT SAFETY INFORMATION

Warnings: reSET-O is intended for patients whose primary language is English and who have access to an Android/iOS tablet or smartphone. reSET-O is intended only for patients who own a smartphone and are familiar with use of smartphone apps (applications).

reSET-O should not be used by individuals outside active OUD treatment. It is not intended to replace treatment by you, the patient's medical provider. It should be used as an adjunct to clinician treatment, buprenorphine treatment and contingency management.

reSET-O is not intended to be used as a stand-alone therapy for opioid use disorder (OUD). reSET-O does not represent a substitution for a patient's medication. Patients should continue to take their medications as directed by their healthcare provider. The ability of reSET-O to prevent potential relapse after therapy discontinuation has not been studied.

Clinicians should not use reSET-O to communicate with their patients about emergency medical issues. Patients should be clearly instructed not to use reSET-O to communicate to their clinician any urgent or emergent information. In case of an emergency, patients should dial 911 or go to the nearest emergency room.

This piece does not include all the information needed to use reSET® and reSET-O® safely and effectively. Please see full Directions for Use (in the Clinician Dashboard) for complete Important Safety Information

Reference:

1. reSET-O® Clinician Directions for Use. Boston, MA: Pear Therapeutics, Inc; 2020.
2. reSET® Clinician Directions for Use. Boston, MA: Pear Therapeutics, Inc; 2020.
3. reSET-O® Patient Directions for Use. Boston, MA: Pear Therapeutics, Inc; 2019.
4. reSET® Patient Directions for Use. Boston, MA: Pear Therapeutics, Inc; 2019.

reSET® INDICATIONS FOR USE

reSET is intended to provide cognitive behavioral therapy, as an adjunct to a contingency management system, for patients 18 years of age and older, who are currently enrolled in outpatient treatment under the supervision of a clinician. reSET is indicated as a 12-week (90-day) prescription-only treatment for patients with substance use disorder (SUD), who are not currently on opioid replacement therapy, who do not abuse alcohol solely, or who do not abuse opioids as their primary substance of abuse. It is intended to:

- increase abstinence from a patient's substances of abuse during treatment, and
- increase retention in the outpatient treatment program.

reSET® IMPORTANT SAFETY INFORMATION

Warnings: reSET is intended for patients whose primary language is English and whose reading level is at the 7th grade level or above and who have access to an Android/iOS tablet or smartphone.

reSET is intended only for patients who own a smartphone and are familiar with use of smartphone apps (applications).

Clinicians should not use reSET to communicate with their patients about emergency medical issues. Patients should be clearly instructed not to use reSET to communicate to their clinician any urgent or emergent information. In case of an emergency, patients should dial 911 or go to the nearest emergency room.

reSET is not intended to be used as a stand-alone therapy for substance use disorder (SUD). reSET does not represent a substitution for a patient's medication. Patients should continue to take their medications as directed by their healthcare provider.

reSET should not be used by individuals outside active enrollment in a SUD treatment program. It should only be used as an adjunct to face-to-face counseling and contingency management. reSET is not intended to reduce the amount of face-to-face clinician time.

The long-term benefit of treatment with reSET on abstinence has not been evaluated in studies lasting beyond 12-weeks in the SUD population. The ability of reSET to prevent potential relapse after treatment discontinuation has not been studied.

The effectiveness of reSET has not been demonstrated in patients currently reporting opioids as their primary substance of abuse.

