



NMDOT

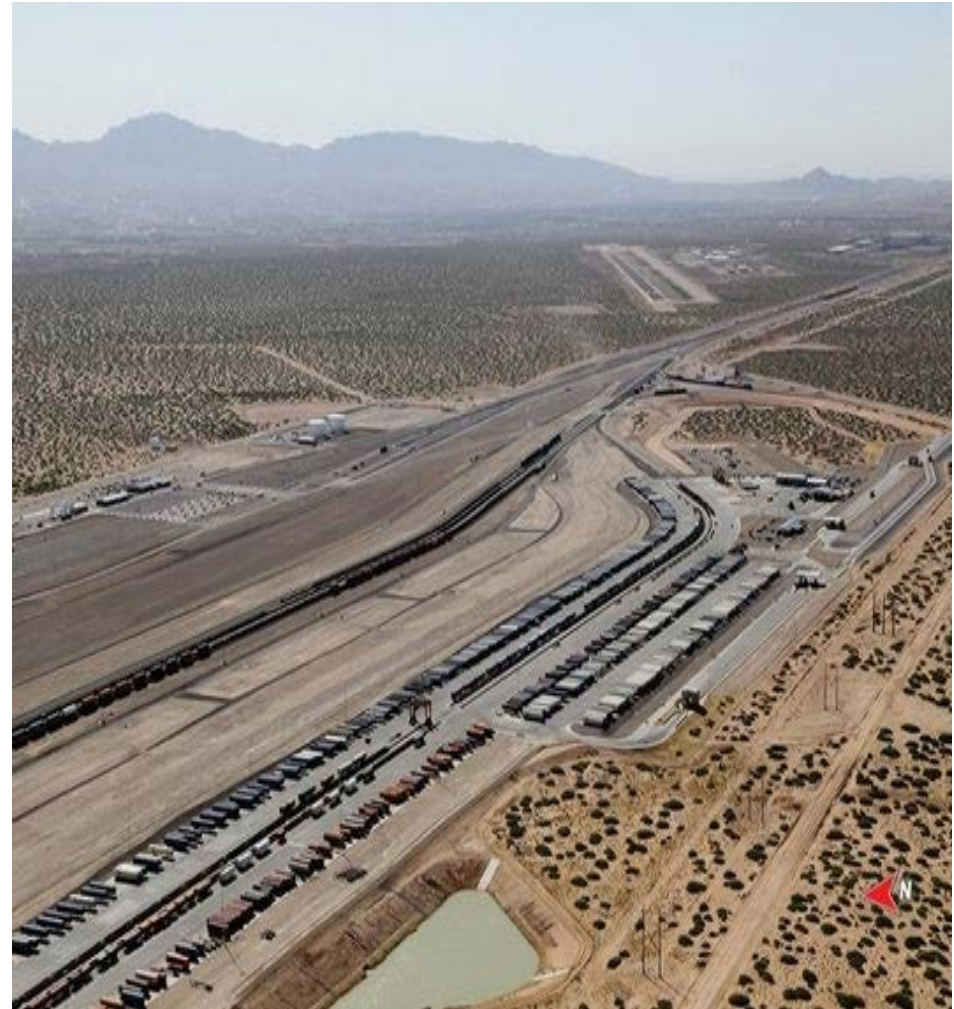
New Mexico

Department of Transportation

**Transportation Infrastructure
Activity
Santa Teresa Port of Entry
Region**

Regional Infrastructure Impacts

- Union Pacific Intermodal Yard
- Industrial Development
 - Los Santos Industrial Parks
 - Fed Ex
 - MSC
 - Cold Valley Storage
 - Foxconn
 - Mexico Infrastructure Development
- CBP Pilot Projects
- TXDOT BorderWest
- Santa Teresa LPOE



Santa Teresa - 2015 NORTHBOUND TRAFFIC FIGURES

Month	Trucks	Buses	POVs	Pedestrians	Total
January	6,934	1	38,741	11,027	56,703
February	6,487	7	33,836	7,141	47,471
March	7,595	13	44,445	12,313	64,366
April	8,201	7	41,208	12,891	62,307
May	8,106	4	44,897	12,120	65,127
June	9,083	11	43,263	10,980	63,337
July	8,957	13	50,587	23,735	83,292
August	9,017	21	49,459	14,574	73,071
September	9,848	15	70,767	10,104	90,734
October	10,576	17	45,393	9,992	65,978
November	8,990	5	45,956	11,542	66,493
December	8,977	4	48,859	24,141	81,981
Total	102,771	118	557,411	160,560	820,860

Santa Teresa - 2014 NORTHBOUND TRAFFIC FIGURES

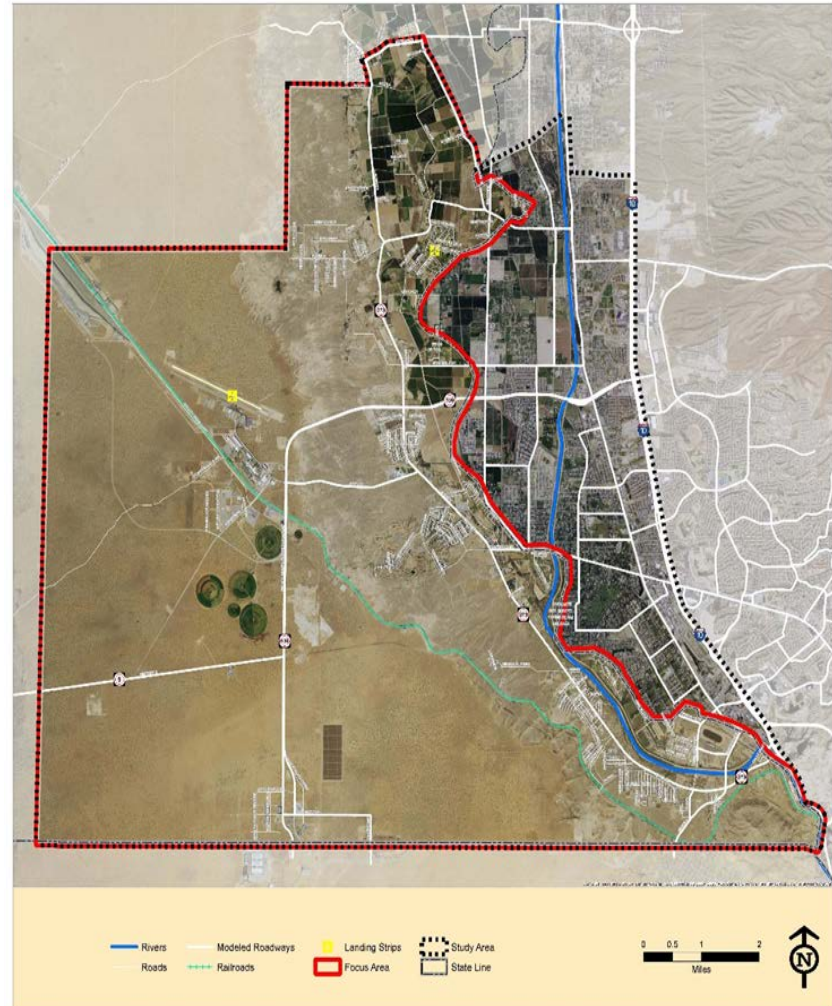
Month	Trucks	Buses	POVs	Pedestrians	Total
January	7,044	12	37,721	12,141	56,918
February	6,459	9	29,968	8,381	44,817
March	6,607	14	36,130	10,245	52,996
April	7,304	20	39,734	20,058	67,116
May	7,728	12	38,168	10,629	56,537
June	7,104	7	37,399	12,840	57,350
July	7,715	9	42,845	24,526	75,095
August	7,128	1	41,439	16,566	65,134
September	7,434	10	34,391	10,796	52,631
October	8,801	8	37,301	11,694	57,804
November	7,079	10	43,084	11,633	61,806
December	7,274	17	45,619	25,567	78,477
Total	87,677	129	463,799	175,076	726,681

Santa Teresa - 2013 NORTHBOUND TRAFFIC FIGURES

Month	Trucks	Buses	POVs	Pedestrians	Total
January	6,628	21	29,879	6,582	43,110
February	5,928	15	26,963	7,152	40,058
March	6,264	13	33,392	13,343	53,012
April	7,146	17	30,768	9,940	47,871
May	7,217	11	32,953	10,665	50,846
June	7,248	21	32,771	9,423	49,463
July	7,561	23	39,915	21,473	68,972
August	7,081	25	39,543	12,358	59,007
September	6,561	19	39,415	10,246	56,241
October	7,542	15	34,752	9,340	51,649
November	6,432	12	39,761	11,509	57,714
December	5,796	13	47,567	21,118	74,494
Total	81,404	205	427,679	143,149	652,437

Transportation Infrastructure Assessment and Strategic Plan-STBAT

- Received FHWA TIGER grant for a comprehensive needs assessment to prioritize transportation infrastructure within region.
- Provide a comprehensive approach for developing feasible transportation options for border freight movement.
- Coordinate planning, construction and maintenance of capital investments.
- Connect transportation needs with employer/employees needs.



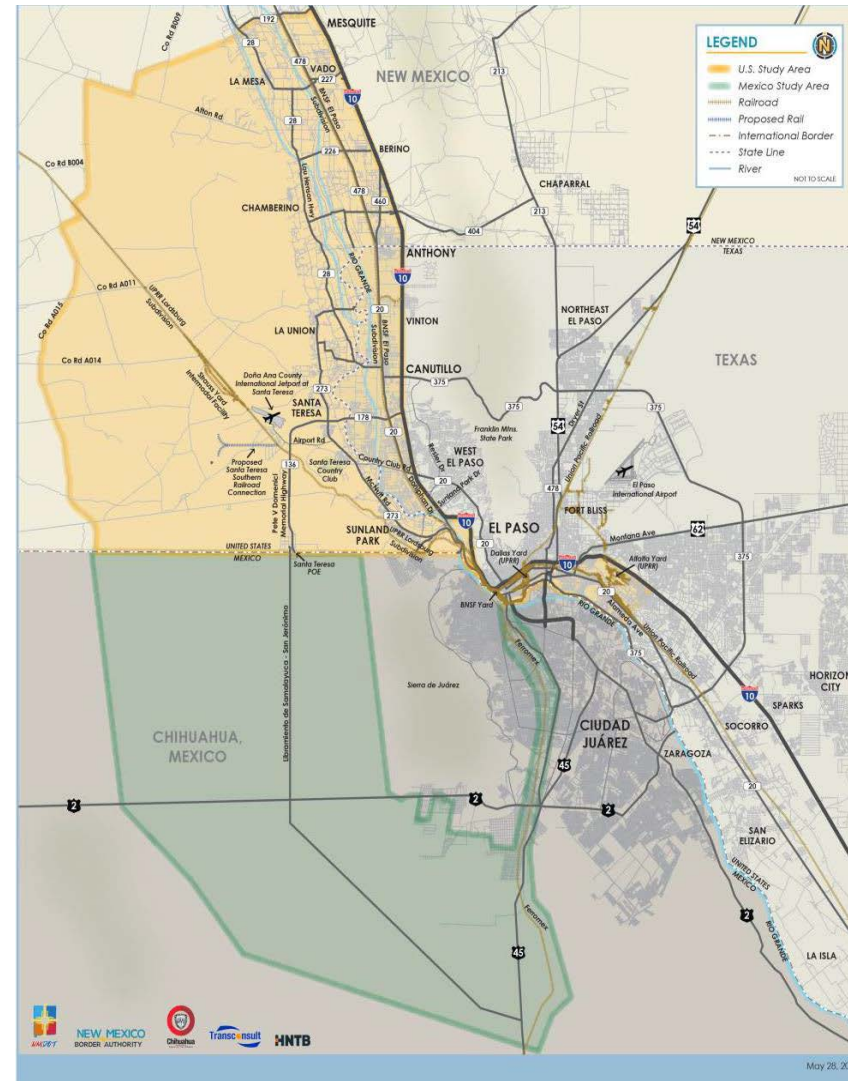
New Mexico-Chihuahua Border Master Plan

- Increase the understanding of Land Ports of Entry (LPOEs) and transportation planning on both sides of the border.
- Create a workable plan for prioritizing and advancing LPOE and related transportation projects.
- Establish a mechanism to institutionalize transportation infrastructure dialogue among local, state, and federal stakeholders in the United States and Mexico.



Rail Bypass Study

- Develop freight corridor connectivity between truck and rail freight.
- Develop freight border crossing inspection, safety, security, and efficiency.
- Border wait times, I-10 connected corridor coalition, overweight zones, and rail trans load facilities.
- Eliminate rail operation conflicts in urban areas of Cd. Juarez/El Paso.

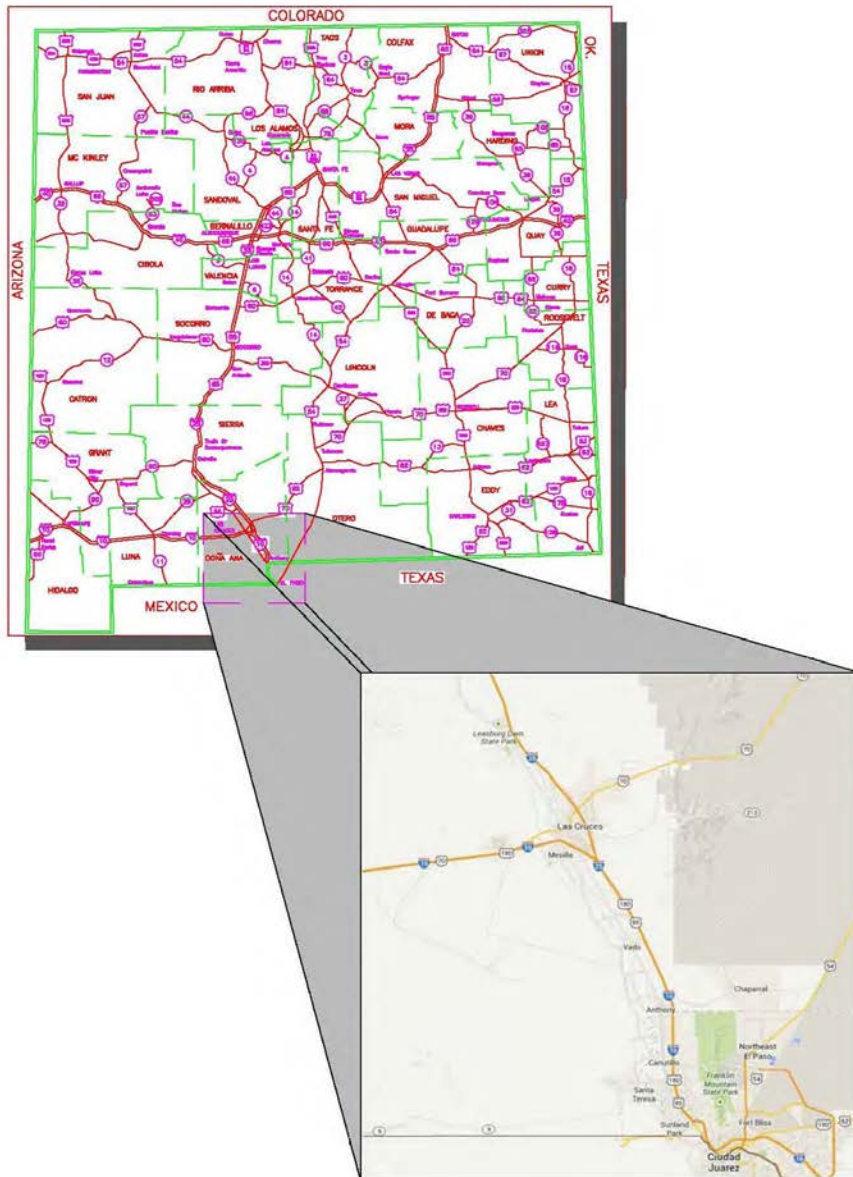


Border Wait Time Analysis

- Commercial Truck analysis for northbound commercial lanes;
- FHWA sponsored project – Joint Working Committee with NMDOT, GSA, CBP, NMDPS, Mexico Government agencies;
- Integrate with Border Crossing Information System;
- Coordination of two year study – beginning September 2016;



West Mesa Corridor Study



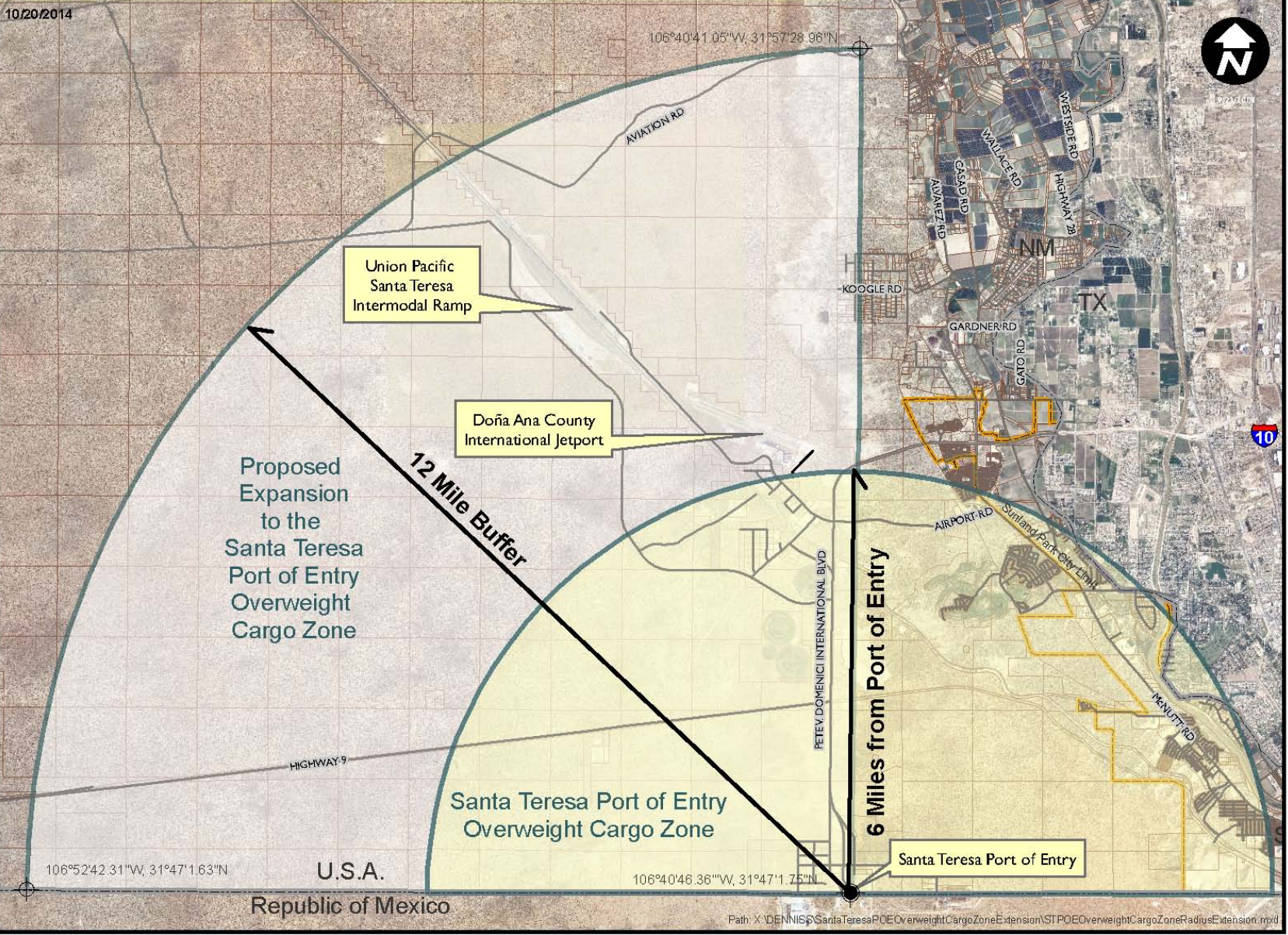
West Mesa Road corridor between Pete Domenici Highway (NM 136) to Interstate 10 West in Dona Ana County.

Identify preferred roadway alignment alternative for final design, including:

- Typical roadway alignments
- Drainage improvements
- Environmental document
- Public involvement

Santa Teresa Port of Entry Overweight Cargo Zone

10/20/2014



Union Pacific
Santa Teresa
Intermodal Ramp

Doña Ana County
International Jetport

Proposed
Expansion
to the
Santa Teresa
Port of Entry
Overweight
Cargo Zone

12 Mile Buffer

6 Miles from Port of Entry

Santa Teresa Port of Entry
Overweight Cargo Zone

Santa Teresa Port of Entry

106°52'42.31"W, 31°47'1.63"N

U.S.A.
Republic of Mexico

106°40'46.36"W, 31°47'1.75"N

Mexico Infrastructure Developments

- Cd. Juarez road extension;
- Cd. Chihuahua Commercial Truck Bypass
- El Berrendo Road – Antelope Well LPOE;
- Palomas Road – Columbus LPOE;
- Freight Trade Corridors.



Northern Economic Corridor

INTEGRACIÓN REGIONAL. *Corredor Económico del Norte / Conexión a Chihuahua.*
Plan Estratégico de Infraestructura y Logística para el Estado de Sinaloa

8a

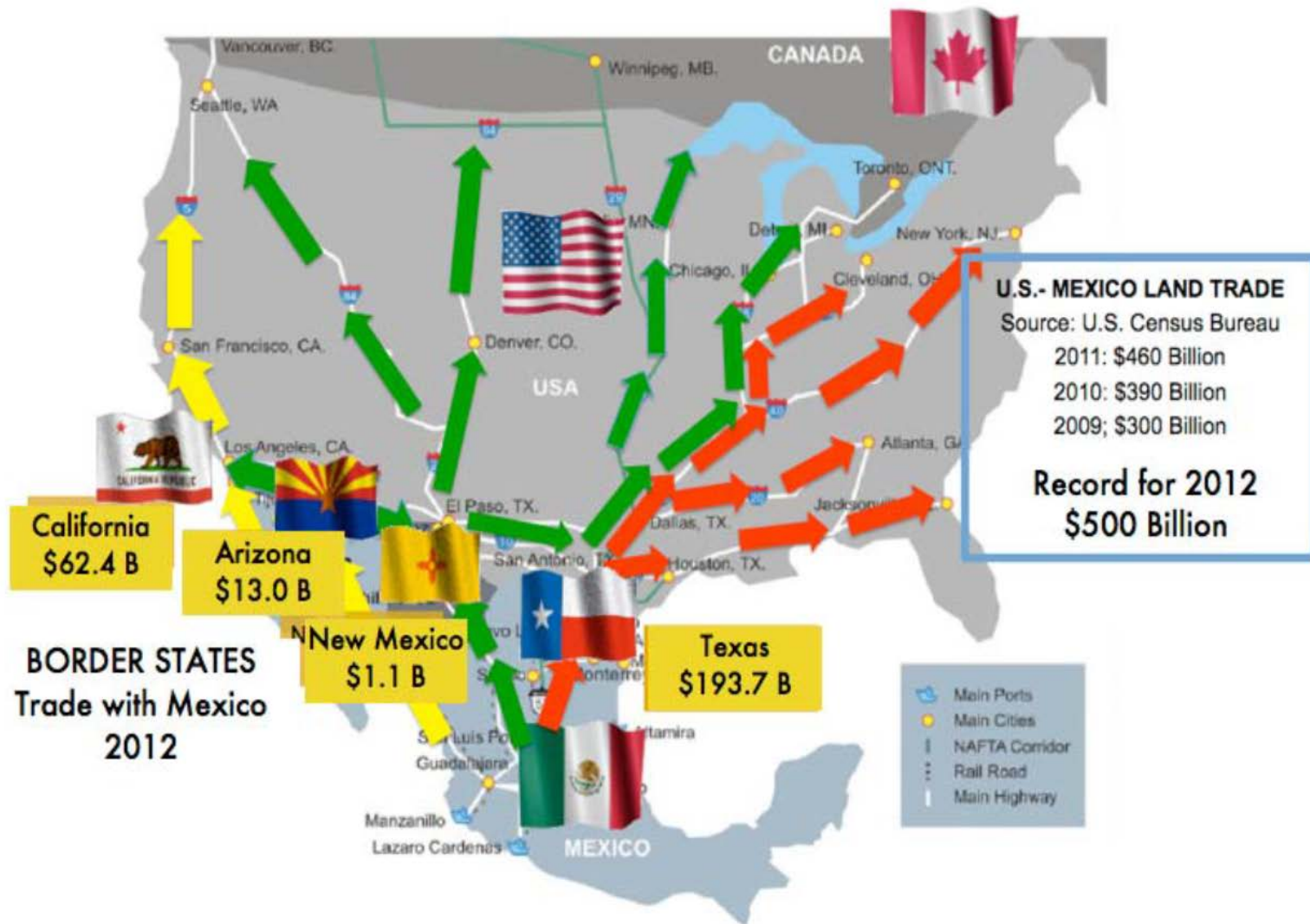


Durango - Mazatlan Highway

(Baluarte Bridge: 1,280 feet high / 390 meters high – 1,706 foot span / 520 meter span)

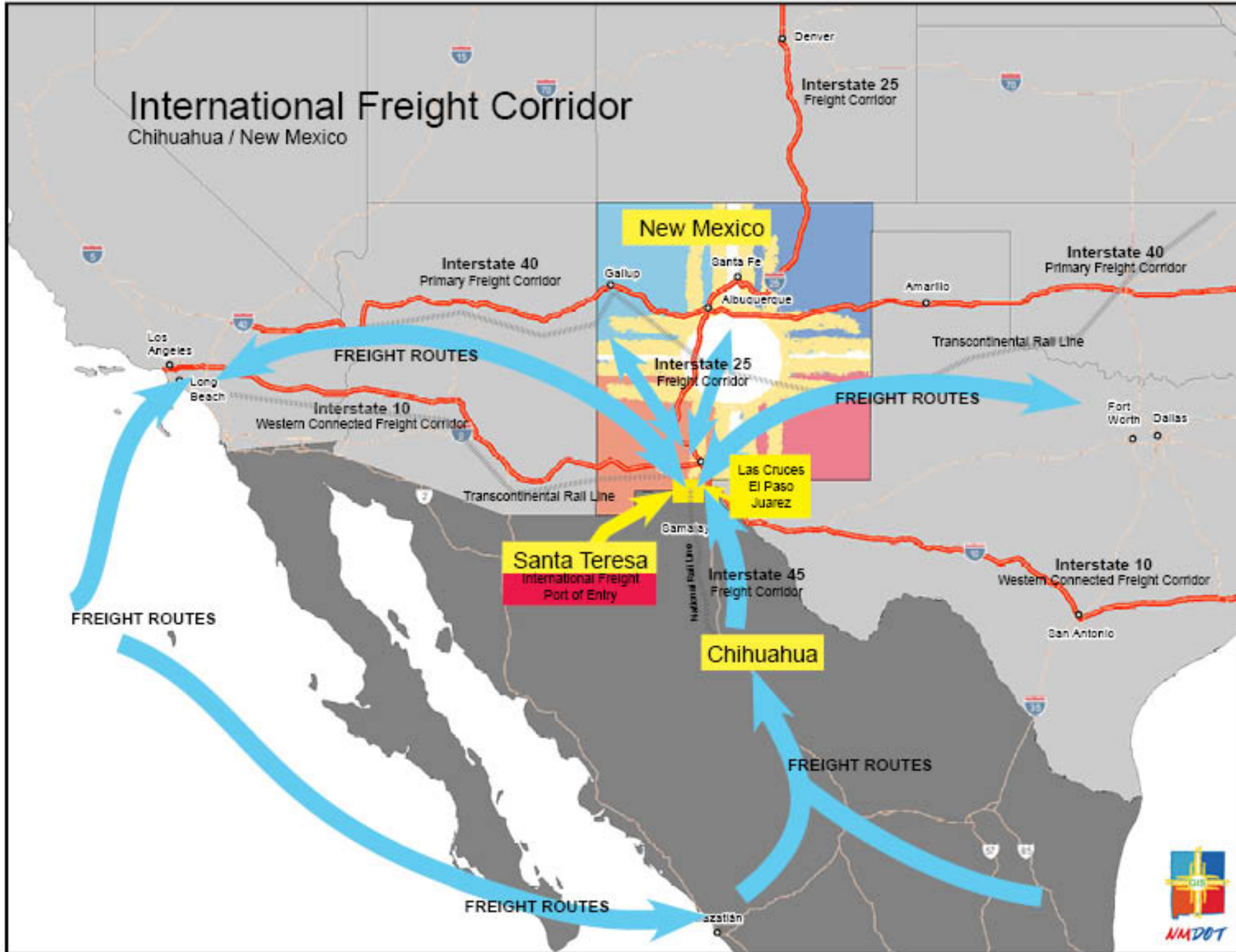


Economic Competitiveness



International Freight Corridor

Chihuahua / New Mexico



NMDOT

Next Steps

- Maintain Infrastructure Priorities;
- Continue collaboration with Mexico and Chihuahua – JWC, BBBXG, NM-CHIH Commission, BTEP;
- Continue coordination with federal, state, and local govt. agencies – DOS, CBP, GSA, EDD, TXDOT, NMBA, DAC;
- Continue coordination with private industry;

Project	Description	Estimated Amount
NM 136	Concrete overlay MP 0 – 9 w/ intersection improvements	\$40 million
I-10 Freight Corridor	Infrastructure improvement MP 0 - 164	\$200 million
High Mesa Study	Completion of Phase B	\$300,000
NM 404 Corridor Study	Phase A & B Study	\$1.2 million
NM 9 Infrastructure improvement	Pavement improvements with shoulders for section between Columbus and ST LPOEs	\$70 million
Fund High Mesa Bypass	Construction of bypass road (4 lanes) from Santa Teresa Industrial region to Las Cruces	\$100 million

Questions?



NM DOT

Homer Bernal
NMDOT International Programs Planner
(575) 525-7337
homerio.bernal@state.nm.us