



Indian Affairs Committee

Presented by:

Sally Marquez

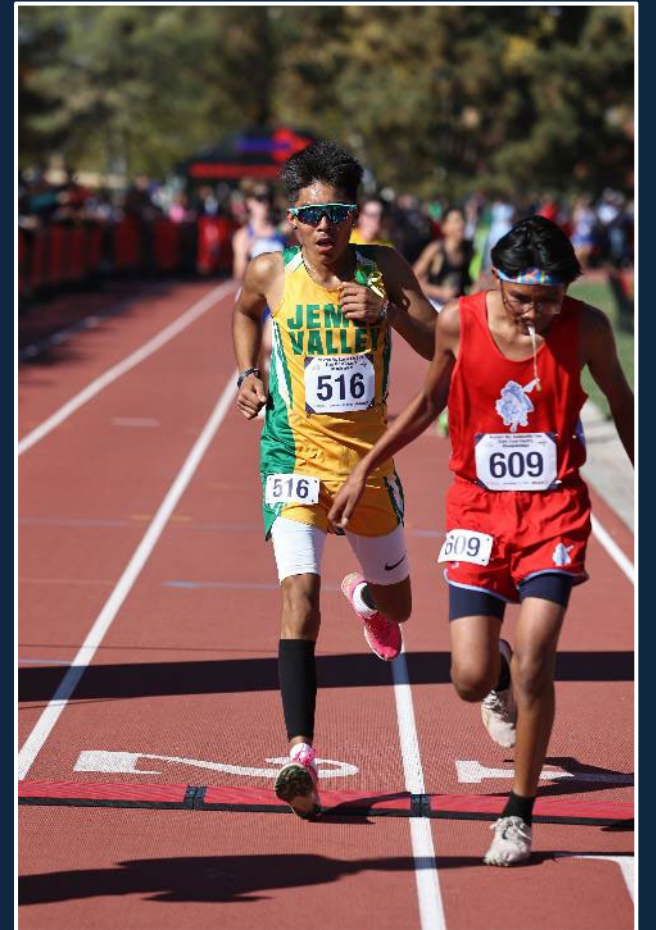
Executive Director, NMAA

New Mexico Activities Association

Member Led Organization

Rules and Regulations

1. Sports Specific Committee, Bylaws Committee
2. Commission
3. Board of Directors
4. Referenda (Vote of the Member Schools)



Membership Led Organization

- 160 High Schools/200 Middle Schools
 - 50,000 Student-Athletes
 - 30,000 Students in Activities



Boarding Schools

Boarding School Rule

Immediate eligibility if boarding, effects enrollment numbers (1.3)

Navajo Prep

Wingate

Pine Hill (No Boarding School Rule)

Santa Fe Indian School (No Boarding School Rule)

BIE Non-Boarding Schools/Charter Schools

- BIE (Non boarding)
 - Mescalero Apache
 - Alamo Navajo
 - To'Hajiilee
 - Northwest (Shiprock)
- Charter Schools
 - NACA
 - Walatowa



Public Schools

- Gallup-McKinley County Schools
- Central Consolidated
- Farmington Municipal Schools
- Grants-Cibola County Schools
- Bloomfield
- Zuni
- Dulce
- Jemez Valley



Service to New Mexico Students

- 14 Sports
- 24 Activities
- NMAA Services **ALL** kids in New Mexico (7-12) including those students NOT enrolled at a member school:
 - Home School
 - Charter School
 - Alternative School
 - Non-Member Private School



Funding

- 50% State Championship Ticket Sales
 - 25% Corporate
 - 25% Membership Dues
-
- No money is received directly from the State of New Mexico
 - Non-Profit Organization



Benefits of Extracurricular Activities

- Lifelong Skills:
 - Goal setting
 - Teamwork
 - Time management
 - Act with integrity and compassion
 - Prioritization
 - Problem-solving
 - Analytical thinking
 - Leadership
 - Intellectual Curiosity
 - Fitness



Extension of the Classroom

National Facts:

Higher GPA

Higher Test Scores

Lower Dropout Rate

Lower Truancy Rate

Fewer Discipline Problems



Compete with Class

- Respect
- Integrity
- Responsibility
- “Stay in Your Lane”
- Two Strikes Policy



QUESTIONS?

