

# Gallup Energy Logistics Park



NM Economic & Rural Development Committee

October 13, 2015

El Morro Theater – Gallup, NM

# Growth will concentrate in Megapolitans



# ***The Economic Importance of Transportation***

A relation between the quantity and quality of transport infrastructure and the level of economic development is apparent. High density transport infrastructure and highly connected networks are commonly associated with high levels of development.

When transport systems are efficient, they provide **economic and social opportunities and benefits** that result in positive multipliers effects such as better accessibility to markets, employment and additional investments. When transport systems are deficient in terms of capacity or reliability, they can have an economic cost such as **reduced or missed opportunities and lower quality of life**.

# Overview

- The Gallup Energy Logistics Park is located 3 miles north of Gallup in rural McKinley County.
- The Gallup Energy Logistics Park represents to Gallup/McKinley County the most viable and promising opportunity in recent memory for the creation of new high wage jobs.
- Preliminary estimates for the Gallup Energy Logistics Park indicate the potential to create up to 1,000 new economic base jobs.

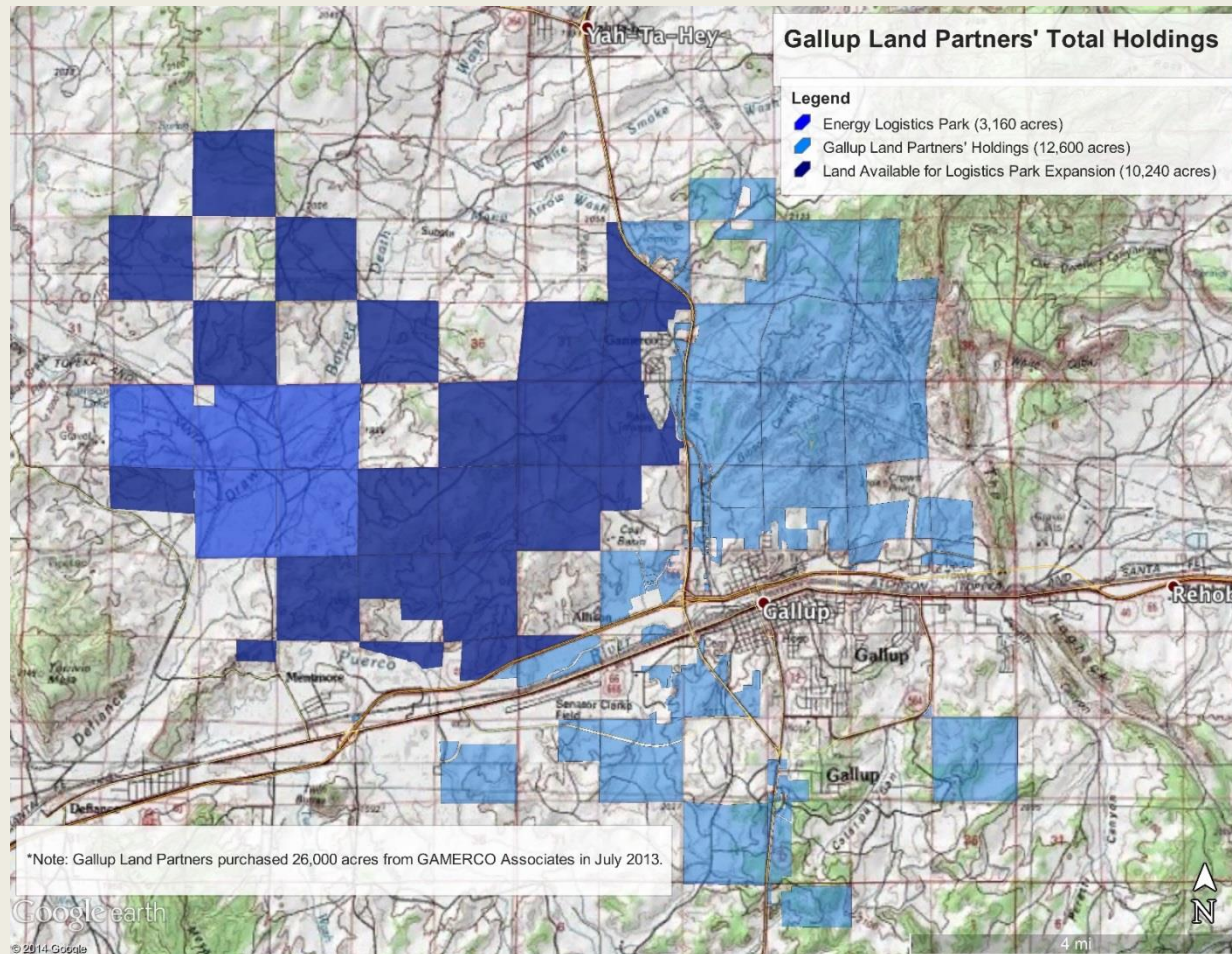
# Overview

- Surrounded by 5 of the nation's fastest growing states in Arizona, Colorado, Nevada, Texas and Utah, the Gallup Energy Logistics Park has been designated as a 'rural outpost' by the Burlington Northern Santa Fe Railroad to:
  - Enhance distribution of goods along its southern TranCon Corridor
  - Support the San Juan Energy Basin

# Overview

- Rail access to the Gallup Energy Logistics Park is a spur off of the mainline track of the BNSF TransCon Corridor.
- There is an existing rail loop that is over 9,000 feet in length and is approximate 3 miles north of the mainline track.
- This track is currently being utilized for coal transloading.

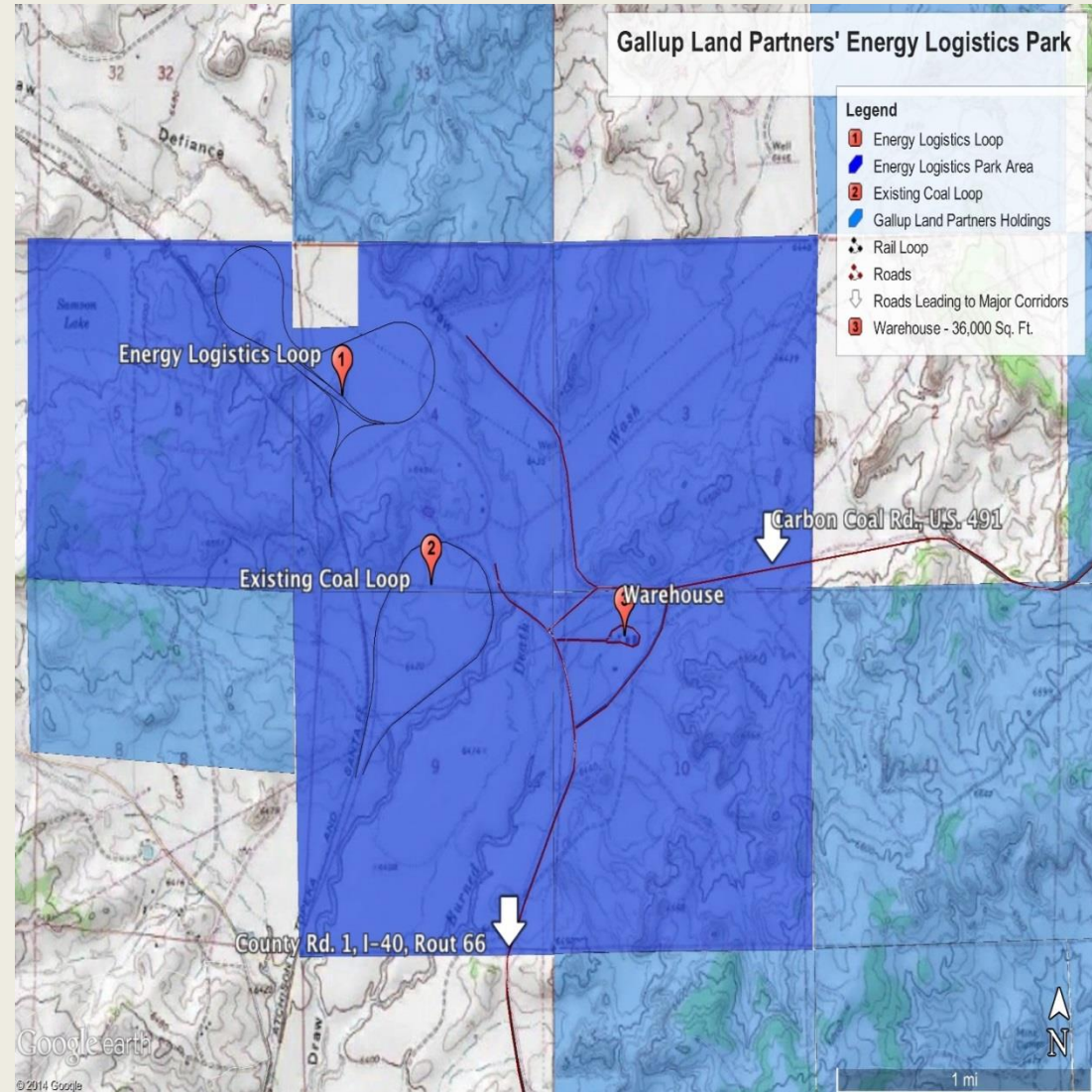
# Gallup Land Partners Land Overview



- 26,000 acres was purchased by GLP in July 2013 for \$33 million.
- GLP has dedicated approximately 3,000 acres for the Energy Logistics Park.
- GLP has allocated up to 10,000 acres for additional expansion.

# Gallup Energy Logistics Park Overview

- Energy Logistics Loop
- Phase 1 Coal Loop is currently moving approximately 800,000 tons of coal annually
- Existing 36,000 ft warehouse
- Access to I-40 by County Road 1 – Existing all-weather road
- Access to US 491 by Carbon Coal Rd – Recently approved for improvement





# Gallup Energy Logistics Park Team

- American businessman and investor with 30 years track record in Asia and a portfolio of companies across Asia and the United States
- Owner & Managing Director of Gallup Land Partners
- Owner Green River Farms (18,000 acre farm) in Southern Utah with secured and maintained 46,000 acre feet of water rights
- Owner of Sand Hallow Resorts
- Chairman of Oak Law Marketing in Japan, the largest direct marketing and selling companies in Japan
- Co-founder, owner and director of NYSE-listed Acorn International
- Philanthropic work includes UNM-G Entrepreneurship Program funding 15 full tuition scholarships per year



Robert Roche

# Gallup Land Partners Logistics Park Team

- Gallup Land Partners Rail Consultants
- IFG Development Group
- Co Founder & Retired CEO of Logistics Park Chicago – The largest inland port in America
- 37 years building logistics parks world wide
- Largest Landlord to BNSF Railroad



Steven Edelson



Logistics Park Chicago

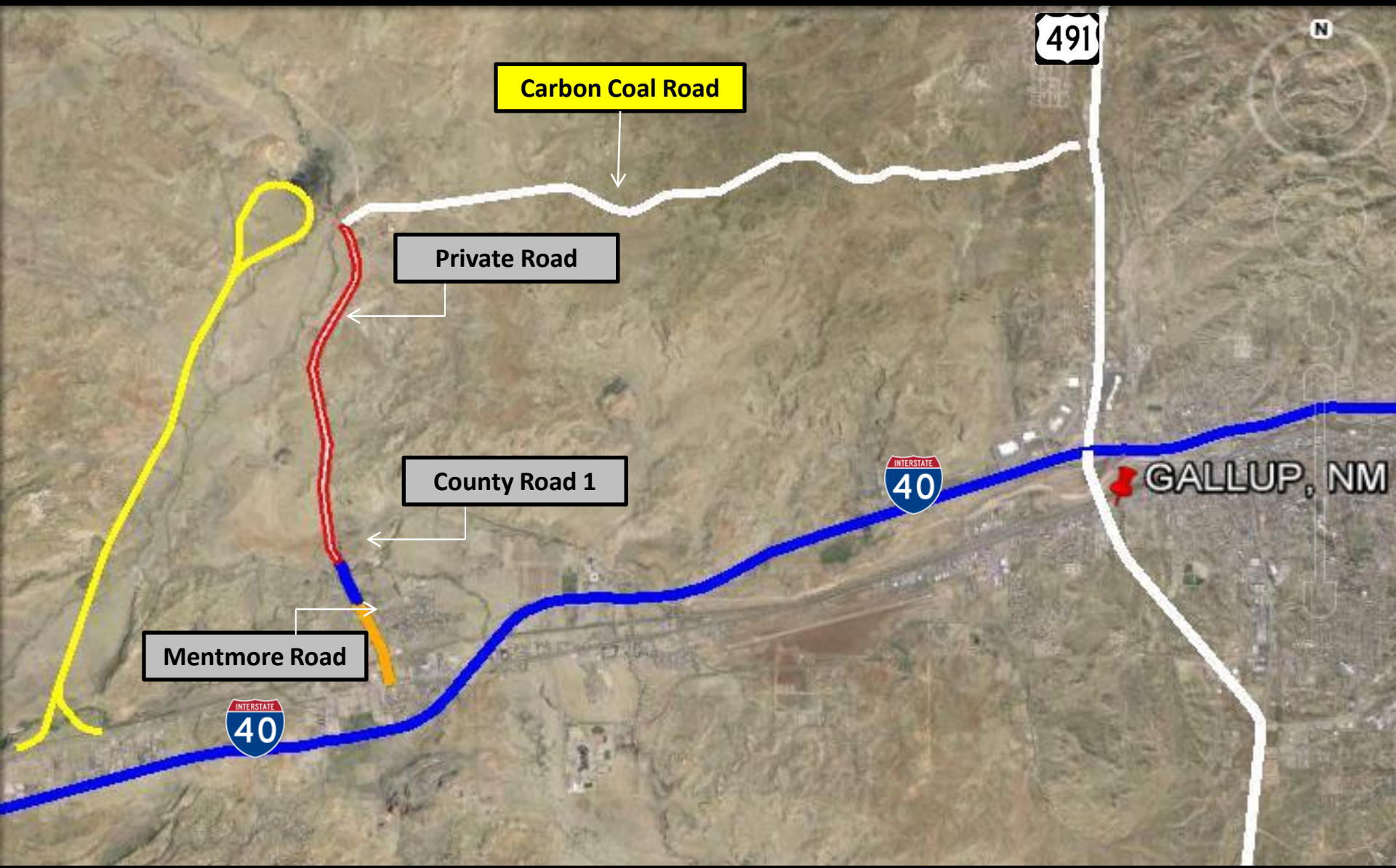


Mike Mullen

# Gallup Land Partners Advantage

- Already own the land and 26,000 acres of property
- Total already invested: \$35 million in Land & Energy Development
- All Privately Funded
- Completed all initial engineering:
  - Environmental
  - Archeological
  - Geotechnical
  - Surveying
  - Topographical Studies
- Carbon Coal Road
  - Accepted into Public Domain & privately maintained by GLP
  - Truck traffic diverted from Downtown Gallup

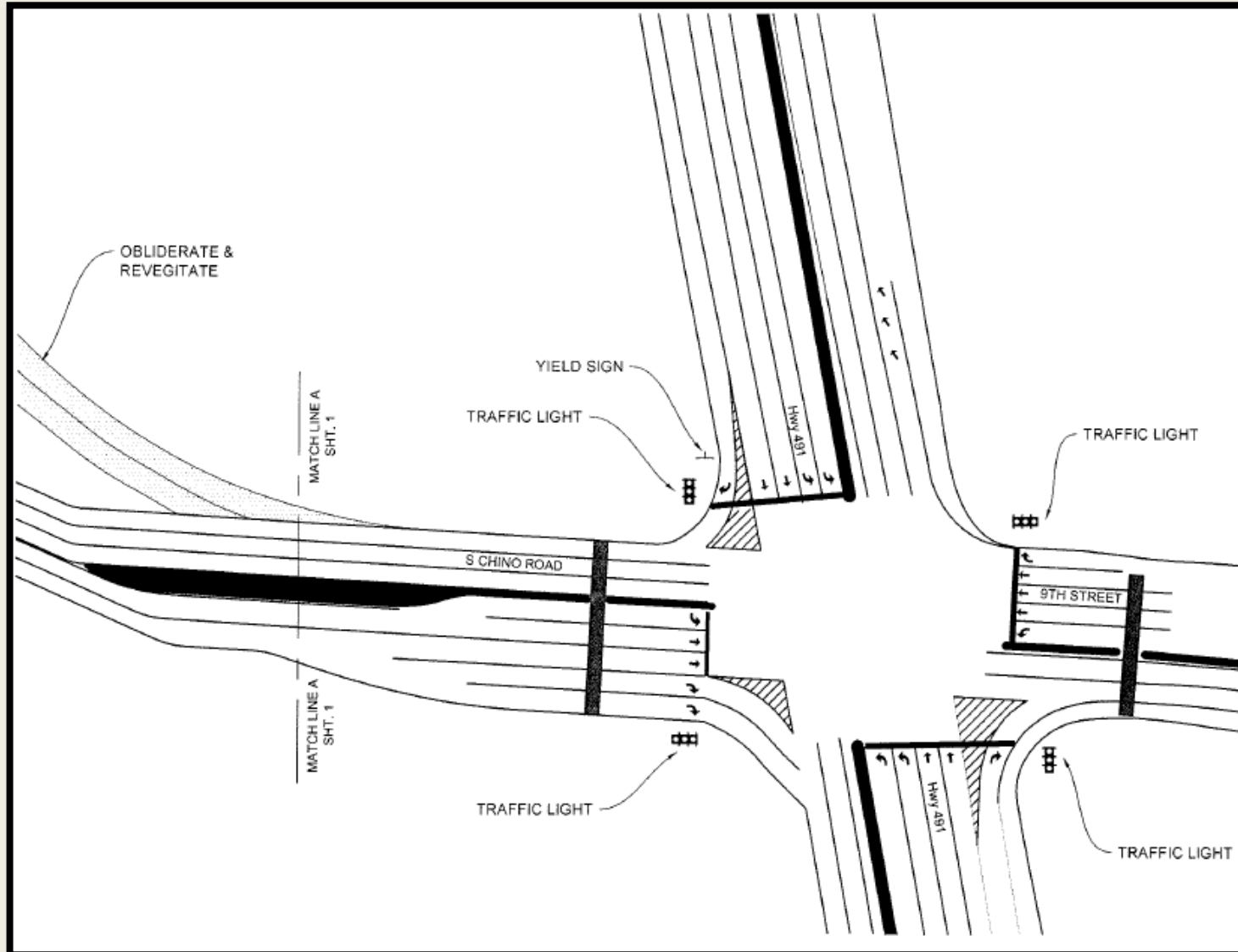
# Gallup Energy Logistics Park Transportation Corridors



# US Hwy 491/ 9<sup>th</sup> Street/ Chino Loop Road Existing Alignment



# US 491 Intersection Improvements



# US Hwy 491/ 9<sup>th</sup> Street/ Chino Loop Road Proposed Alignment



# Summary

- With full build out, Gallup will be positioned to serve as a national transportation and logistics hub.
- With full build out, Gallup is poised to grow new industries including warehousing, distribution, light manufacturing, and value-added agriculture.
- With full build out, Gallup will have turned economic opportunity into economic reality.





[www.GallupEDC.com](http://www.GallupEDC.com)