



**Economic and Rural Development  
and Policy Committee**  
Tuesday, October 15, 2024

Victoria Archuleta, MBA  
Senior Economic Developer & Film Liaison



VILLAGE *of*  
**LOS LUNAS**  
NEW MEXICO









# LOS LUNAS

Our roots run deep and we cultivate our businesses with care



Established in 1716 and incorporated in 1928, Los Lunas has rapidly grown into an economic powerhouse in the greater metro area.

Our largest private employers are:

- Los Lunas Meta Data Center Campus
- Walmart Distribution Center (25 years)
- Wall Colmonoy
- Niagara Bottling
- Fresenius Medical Care
- Accurate Machine & Tool
- Party Outlaw



# COMMUNITY ASSETS



Pro-Business Community  
Availability of industrial sites  
Easy transportation access  
Available workforce  
Affordable housing

Growing tech ecosystem  
New business incubator  
University satellite campus (2)  
Quality of life  
Rich cultural heritage  
Proximity to Albuquerque





WORKFORCE TRAINING CENTER

# WORKFORCE TRAINING

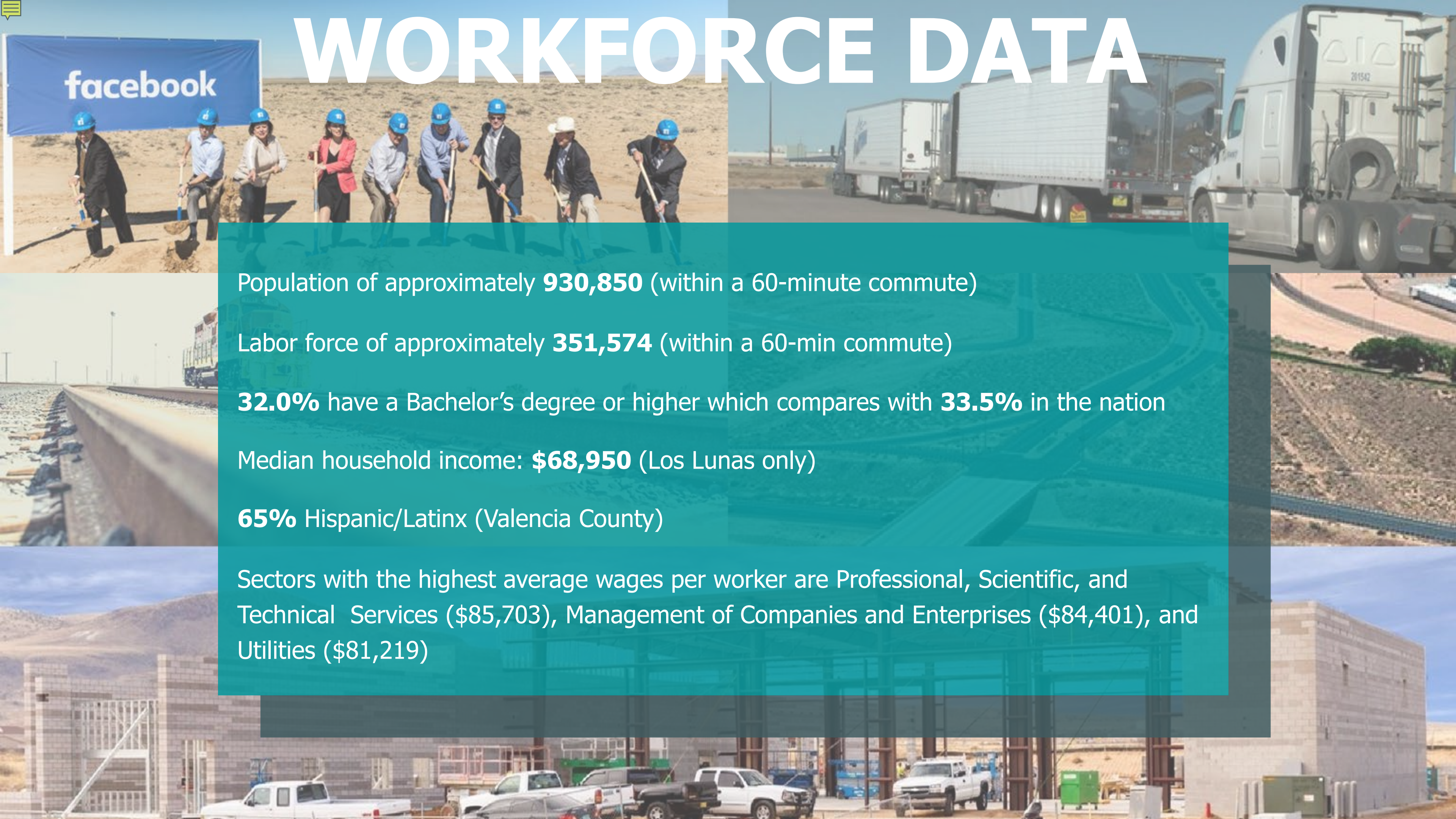


**VALENCIA**  
WORKFORCE TRAINING CENTER

505.925.8500 • VALENCIA.UNM.EDU



# WORKFORCE DATA



Population of approximately **930,850** (within a 60-minute commute)

Labor force of approximately **351,574** (within a 60-min commute)

**32.0%** have a Bachelor's degree or higher which compares with **33.5%** in the nation

Median household income: **\$68,950** (Los Lunas only)

**65%** Hispanic/Latinx (Valencia County)

Sectors with the highest average wages per worker are Professional, Scientific, and Technical Services (\$85,703), Management of Companies and Enterprises (\$84,401), and Utilities (\$81,219)





# NEW INFRASTRUCTURE



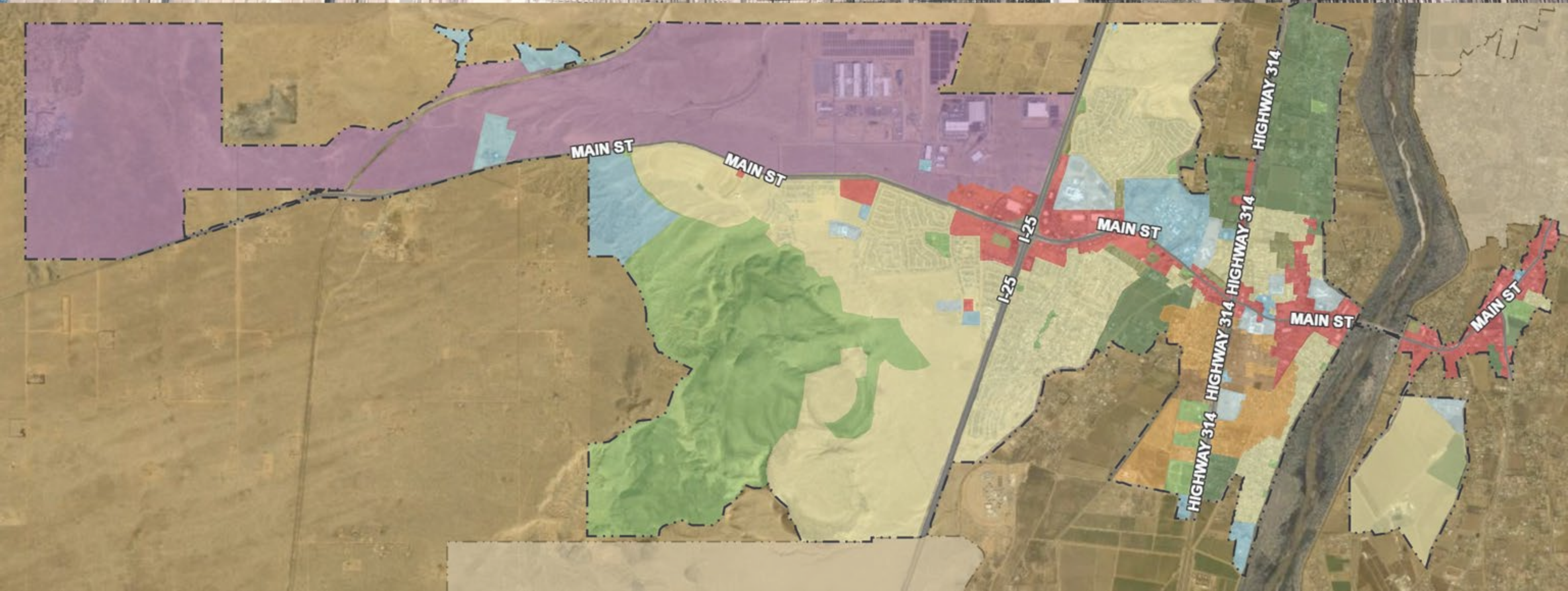
## Over 50 active projects

- I -25 Interchange 2025
- Water & Sewer upgrades & extension





# MAP OF LOS LUNAS







**Walmart**   
Distribution Center

niagara 

FRESENIUS  
MEDICAL CARE 

WALLCOLMONOY 

amscan®  
*The Party People*



# LOS MORROS BUSINESS PARK



**Walmart**   
Supercenter







## **META DATA CENTER**

- 750-acre campus
- 4.2 million sq ft



Conceptual Renderings

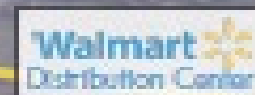


**NEW HOSPITAL SITE ANNOUNCED**



ALBUQUERQUE

LOS LUNAS



Hidden Mtn Switching Station

SOLD



Distribution Facility Under Construction



Under Contract Future Solar

Under Contract

±716.33 AC  
WILL DIVIDE

**HUNING  
BUSINESS & TECH PARK  
WEST**

# HUNING BUSINESS & TECH PARK

Not to Scale  
Boundaries are approximate









**A look to the future...**





VILLAGE *of*  
**LOS LUNAS**  
NEW MEXICO

VICTORIA ARCHULETA, MBA  
SENIOR ECONOMIC DEVELOPER  
ARCHULETAV@LOSLUNASNM.GOV  
C: 505-859-0858

