



Improving Infrastructure to Attract and Keep Businesses

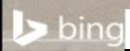
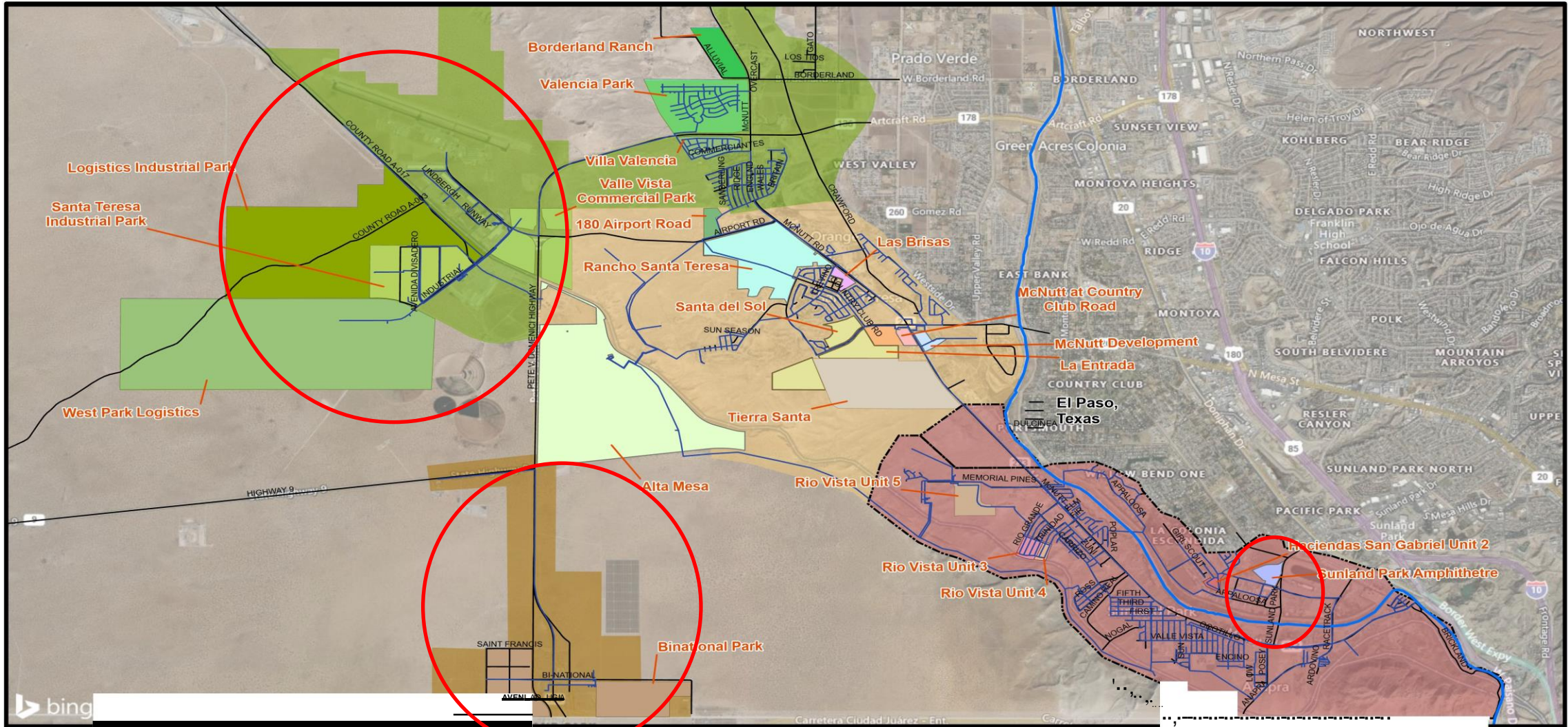
- **CRRUA Vital Stats: City of Sunland Park & Dona Ana County**
- **Geographic Areas of Business Development**
- **Water & Wastewater System Challenges**
- **Glance of Capital Improvements & Funding**
- **Collaboration Areas**



Regional Growth & Development

VITAL STATISTICS

Active Connections	7,900 Water Meters approx.
Active Developments	Est. 1,000 additional homes end of 2025
Development in Process	Est. 6,500 homes in 5 years
Sunland Park Population (2022)	17,414
Santa Teresa Population (2022)	6,300
CRRUA Utility System	3 - WWTP 4 - ATFs 7 - Water Tanks



- r..._1 Sunland Park City Limits
- - - Pipe
- - - Roads
- - - Rio Grande River
- - - Sunland Park Service Area
- - - Border Service Area
- - - Santa Teresa Community Service Area
- - - Santa Teresa Industrial Park Service Area

Camino Real Regional Authority Water Infrastructure Plan

0 0.5 2 Miles



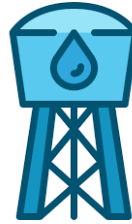
Figure 2-3
Proposed Developments



Sunland Park & Santa Teresa Infrastructure Planning & Growth



Wastewater Treatment
&
Effluent Discharge



Water Holding
Capacity



Well Pumping Capacity
&
Treatment

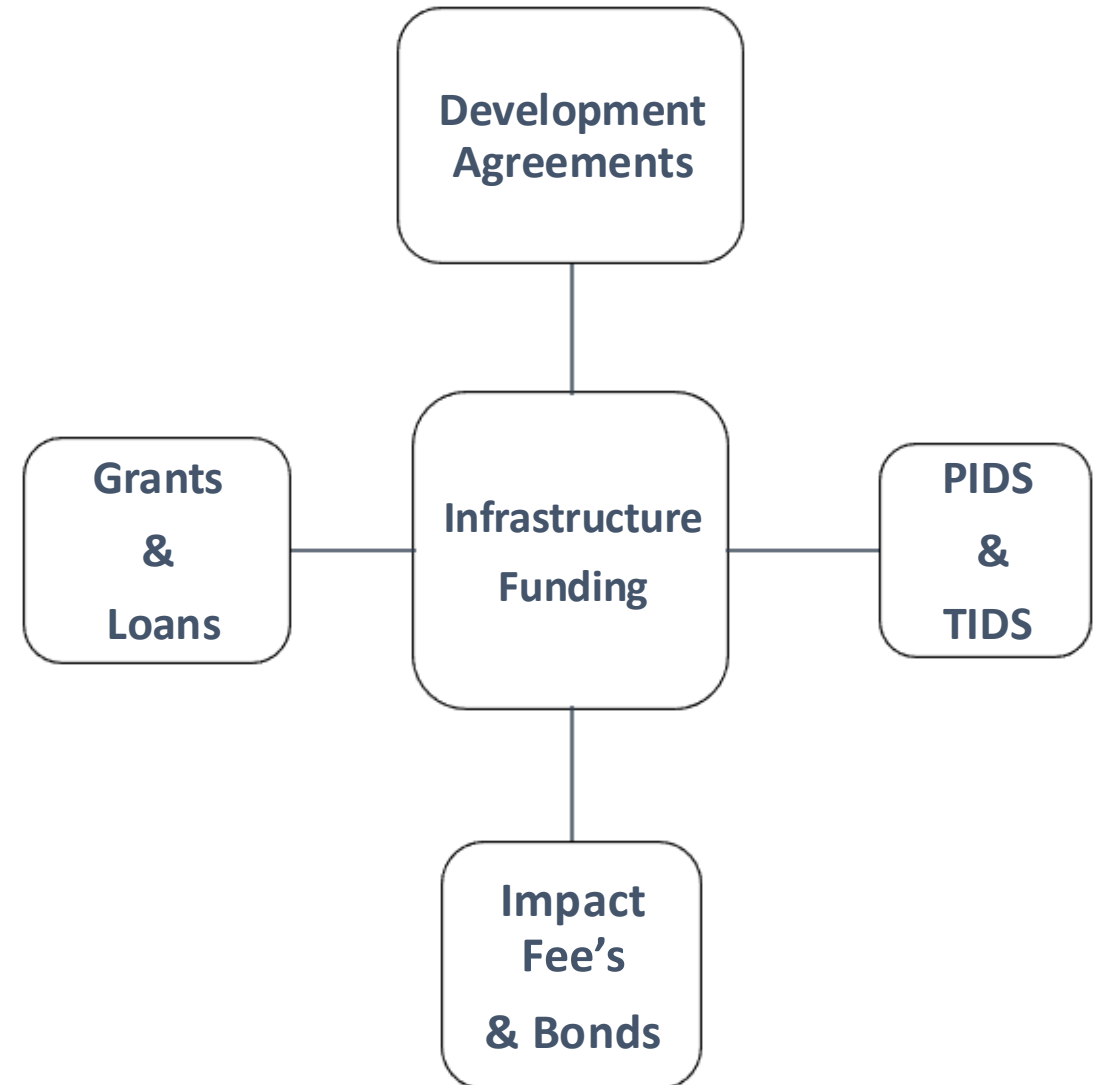
Capital Improvements and Funding Mechanisms

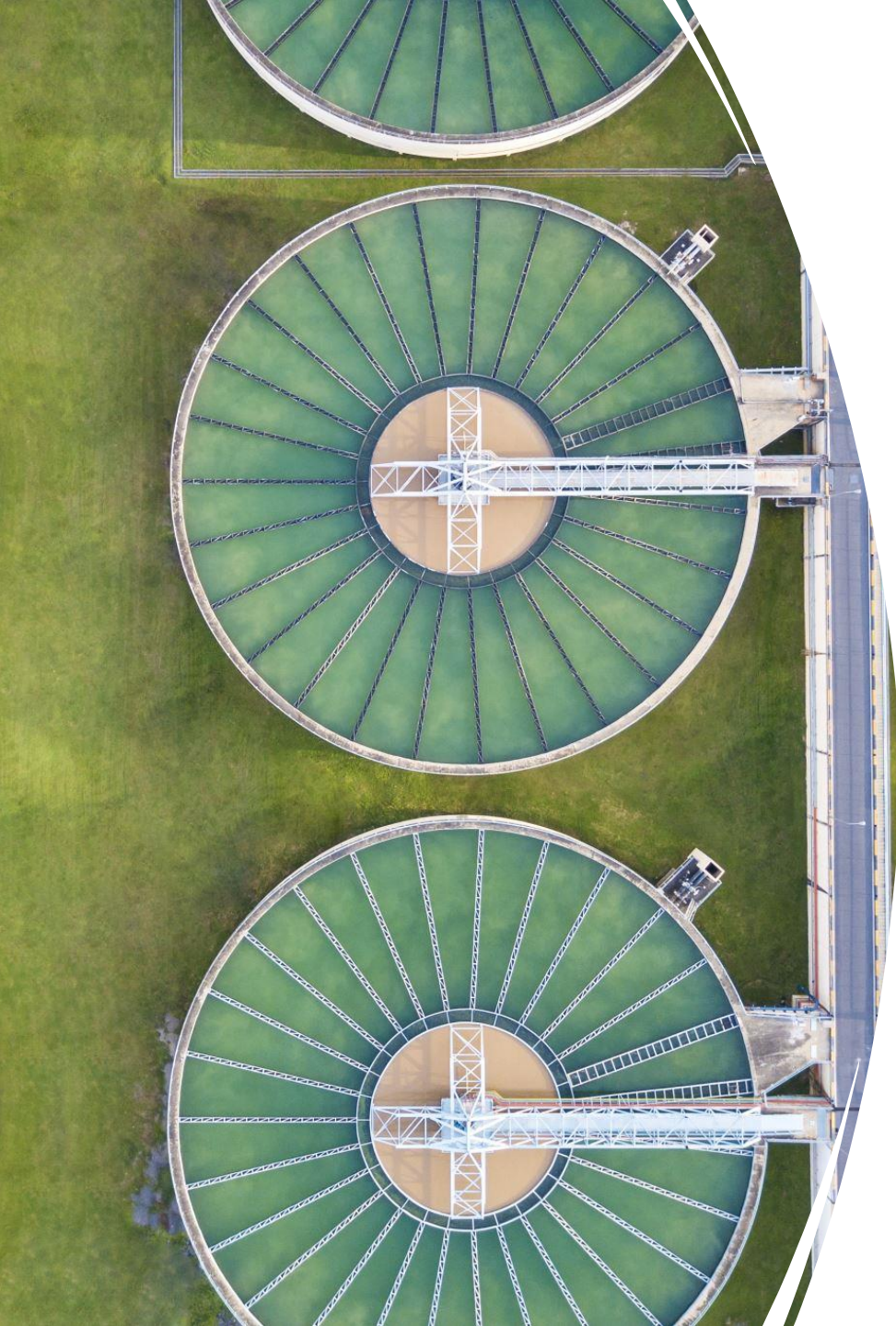
Water Capital Improvement

- \$6.5M – ST WATER TANK
 - \$4M – POE Arsenic Plant
 - \$4M – Well 8A*
- *Application submitted.

Wastewater Capital Improvement

- \$5M - N.WWCS
 - \$5M – WW PLANTS
 - \$7.5M – Sunland WWTP*
- *Application submitted.





Collaboration Regional & State

- Align ICIP and Target Regional Projects
 - DAC – Industrial Road Project
 - COSP – Calle Morrocco & Riverside Development
 - COSP – Entertainment District
 - BA – 1 MG Elevated Lift Tank
- NM – EDD: Santa Teresa Master Plan
- COSP – Comprehensive Master Planning



THANK YOU!