



# Local Law Enforcement Perspectives

Las Cruces Police Department

Chief Jeremy Story

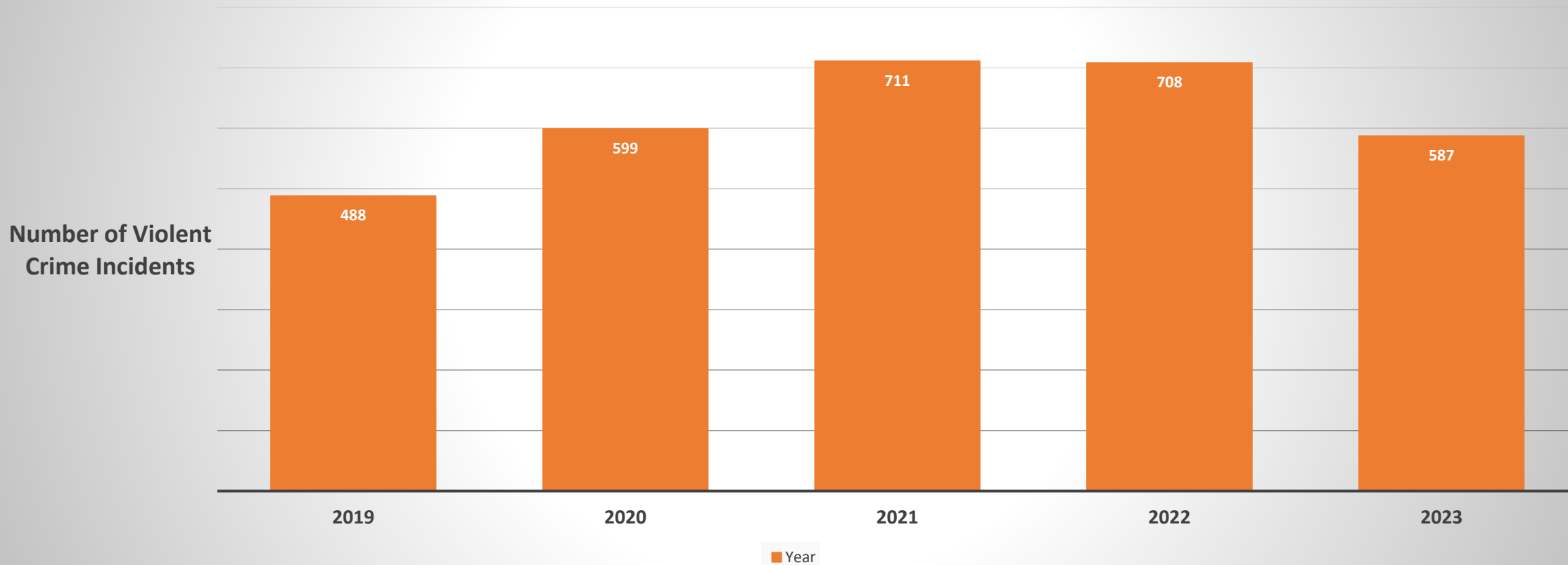
October 9, 2024

*TO PROTECT AND SERVE WITH P.R.I.D.E*

t

**20% INCREASE**

### Part I - Violent Crime 5 Year TREND



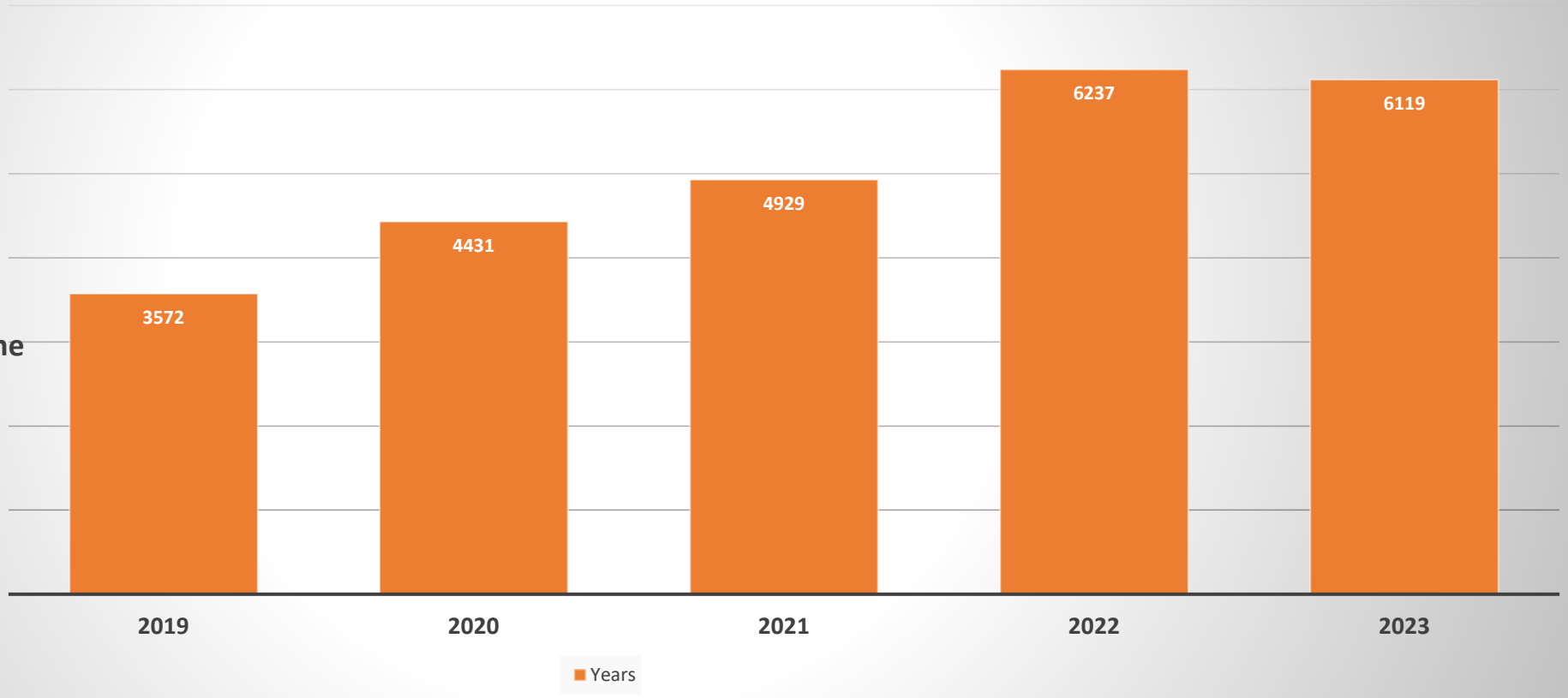
**TO PROTECT AND SERVE WITH P.R.I.D.E**

t

**71% INCREASE**

### Part 1- Property Crime 5 Year TREND

Number of Property Crime incidents



TO PROTECT AND SERVE WITH P.R.I.D.E

# Last year every citizen had a 1 in 17 chance of being a victim of a reported crime!

## Violent Crime

- National Average (2022):
  - 3.8 crimes per 1000 people
- Las Cruces Rate (2023):
  - 5.0 crimes per 1000 people
- 31.6% higher than the national average.

## Property Crime

- National Average (2022):
  - 19.5 crimes per 1000 people
- Las Cruces Rate (2023):
  - 53.2 crimes per 1000 people
- 172.8% higher than the national average.



# 2024 YTD CRIME UPDATE: VIOLENT CRIME

CRIME	2023	2024	% CHANGE
CRIMINAL HOMICIDE	7	15	114%
RAPE	35	45	29%
ROBBERY	50	46	-8%
AGGRAVATED ASSAULT	270	424	57%
<b>TOTAL VIOLENT CRIME</b>	<b>362</b>	<b>530</b>	<b>46%</b>



TO PROTECT AND SERVE WITH P.R.I.D.E

# 2024 YTD CRIME UPDATE: PROPERTY CRIME

CRIME	2023	2024	% CHANGE
RESIDENTIAL BURGLARY	224	167	-25%
COMMERICAL BURGLARY	235	214	-9%
NON-RESIDENTIAL BURGLARY	158	103	-35%
BREAKING & ENTERING	94	76	-19%
AUTO BURGLARY	769	614	-20%
FELONY THEFT	230	340	48%
MISDEMEANOR THEFT	819	669	-18%
MISDEMEANOR SHOPLIFTING	962	1099	14%
VEHICLE THEFT	492	485	-1%
ARSON	7	6	-14%
<b>TOTAL PROPERTY CRIME</b>	<b>3990</b>	<b>3773</b>	<b>-5%</b>



TO PROTECT AND SERVE WITH P.R.I.D.E

t

# SIGNIFICANT CHALLENGES



*TO PROTECT AND SERVE WITH P.R.I.D.E*

t

# 1. COMPETENCY LAWS



TO PROTECT AND SERVE WITH P.R.I.D.E



# ADDRESS COMPETENCY ISSUES

## LAS CRUCES MUNICIPAL COURT

Year	Total Criminal Cases	Cases Dismissed Incompetent	% of Cases
2018	2102	72	3.4%
2019	1696	65	3.8%
2020	1316	180	13.7%
2021	1258	143	11.4%
2022	1405	200	14.2%
2023*	1139	109	9.6%



t

## 2. PRE-TRIAL DETENTION (BAIL REFORM)



TO PROTECT AND SERVE WITH P.R.I.D.E

# RECIDIVISM IN LAS CRUCES

Calendar Year	2018	2019	2020	2021	2022	2023	Overall
One-Time Offender	2899	2573	1834	2008	2190	2302	13806
Non-Chronic (2-5 arrests)	907	768	145	563	654	596	3633
Chronic (6-10 arrests)	55	43	37	42	62	50	289
Prolific (Over 10 arrests)	5	5	14	14	24	21	83



TO PROTECT AND SERVE WITH P.R.I.D.E

# 2024 Recidivism through 9/30/24

## NUMBER OF ARRESTS

Name	2018	2019	2020	2021	2022	2023	2024	Grand Total
Eduardo V.	3	1	37	24	42	35	39	181
Logan M.	6	35	31	27	8	8	14	129
Heather C.	1	5	6	15	28	28	33	116
Aldous C.				5	11	33	21	70
Neal G.	6	7	2	2	14	21	15	67
Patrick T.		1		5	18	12	8	44
Luis P.	3		3	3	9	14	11	43
Nestor U.					2	9	24	35
Fernando I.		1	1	15	2	7	8	34
Blas U.	2	2	1	4	1	9	14	33
Eric L.	1	5	2	1	6	7	9	31
Daniel M.			1		4	4	19	28
Johnny M.					3	8	13	24
Ruben R.						13	9	22
Sean M.	3				8	4	4	19
Anthony D.	2				2	5	9	18
Paul V.			1	2	3	4	6	16
Gregory H.					1	5	6	12
Jerry F.			2		1		6	9
Christopher S.							8	8
Monica S.							7	7



TO PROTECT AND SERVE WITH P.R.I.D.E

t

# 3. FENTANYL & METH



TO PROTECT AND SERVE WITH P.R.I.D.E

# Dona Ana County New Mexico Reported Overdoses



### Overdose Types

- ◆ Fatal: No Naloxone
- ◆ Fatal: Single Dose Naloxone
- ◆ Fatal: Multiple Doses Naloxone
- ◆ Fatal: Naloxone Unknown
- Non-Fatal: No Naloxone
- Non-Fatal: Single Dose Naloxone
- Non-Fatal: Multiple Doses Naloxone
- Non-Fatal: Naloxone Unknown
- Unknown



TO PROTECT AND SERVE WITH P.R.I.D.E



# DONA ANA COUNTY OVERDOSE HEAT MAP

Overdoses: 1/1/2022 to 12/31/2023



**2022-2023**  
Total ODs: 1230  
Fatal ODs: 135  
Naloxone: 315



TO PROTECT AND SERVE WITH P.R.I.D.E

t

# 4. JUVENILE JUSTICE FAILURES



*TO PROTECT AND SERVE WITH P.R.I.D.E*



# “GET AWAY WITH MURDER”



TO PROTECT AND SERVE WITH P.R.I.D.E

# GUNS, GUNS EVERYWHERE



TO PROTECT AND SERVE WITH P.R.I.D.E

# GUNS, GUNS EVERYWHERE



TO PROTECT AND SERVE WITH P.R.I.D.E

# GUNS IN OUR SCHOOLS



TO PROTECT AND SERVE WITH P.R.I.D.E

# USING GUNS TO THREATEN LAW ENFORCEMENT



TO PROTECT AND SERVE WITH P.R.I.D.E



# GUNS USED FOR DRIVE-BYS



# GUNS USED FOR DRIVE-BYS



TO PROTECT AND SERVE WITH P.R.I.D.E

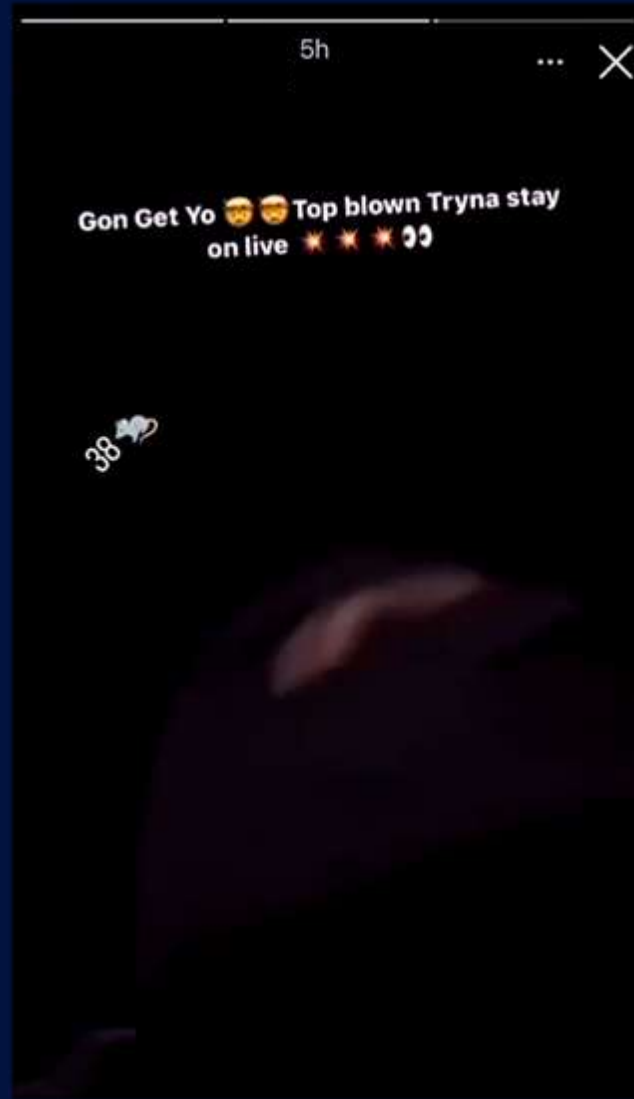
# GUNS USED FOR DRIVE-BYS



TO PROTECT AND SERVE WITH P.R.I.D.E



# GUNS USED FOR DRIVE-BYS



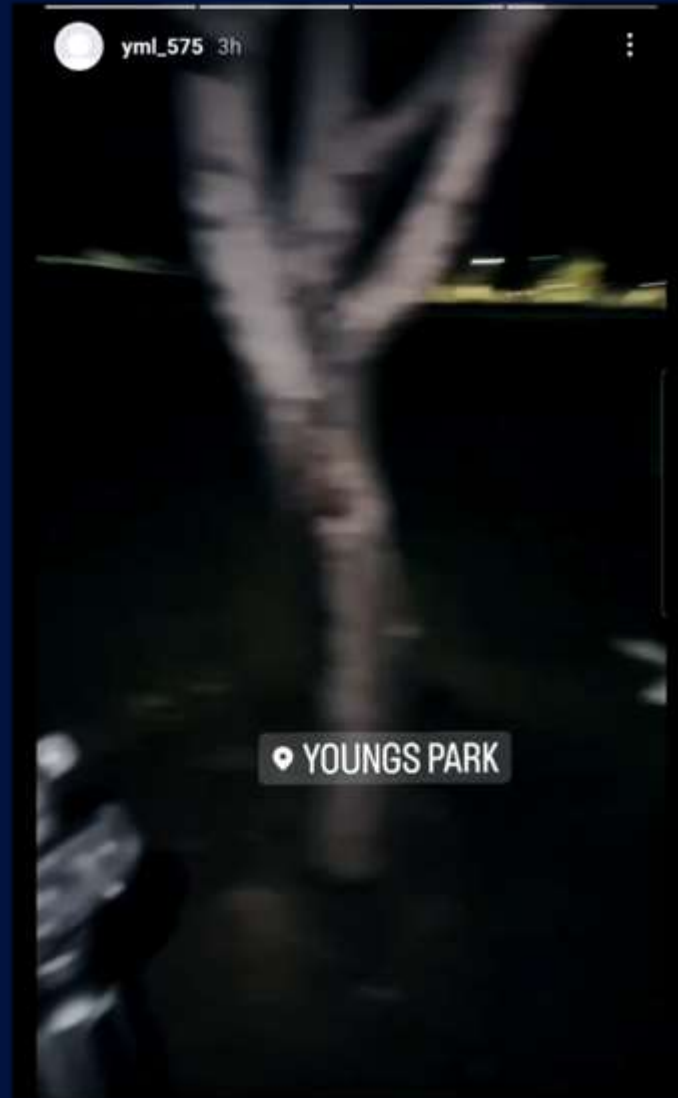
TO PROTECT AND SERVE WITH P.R.I.D.E

# GUNS USED FOR DRIVE-BYS



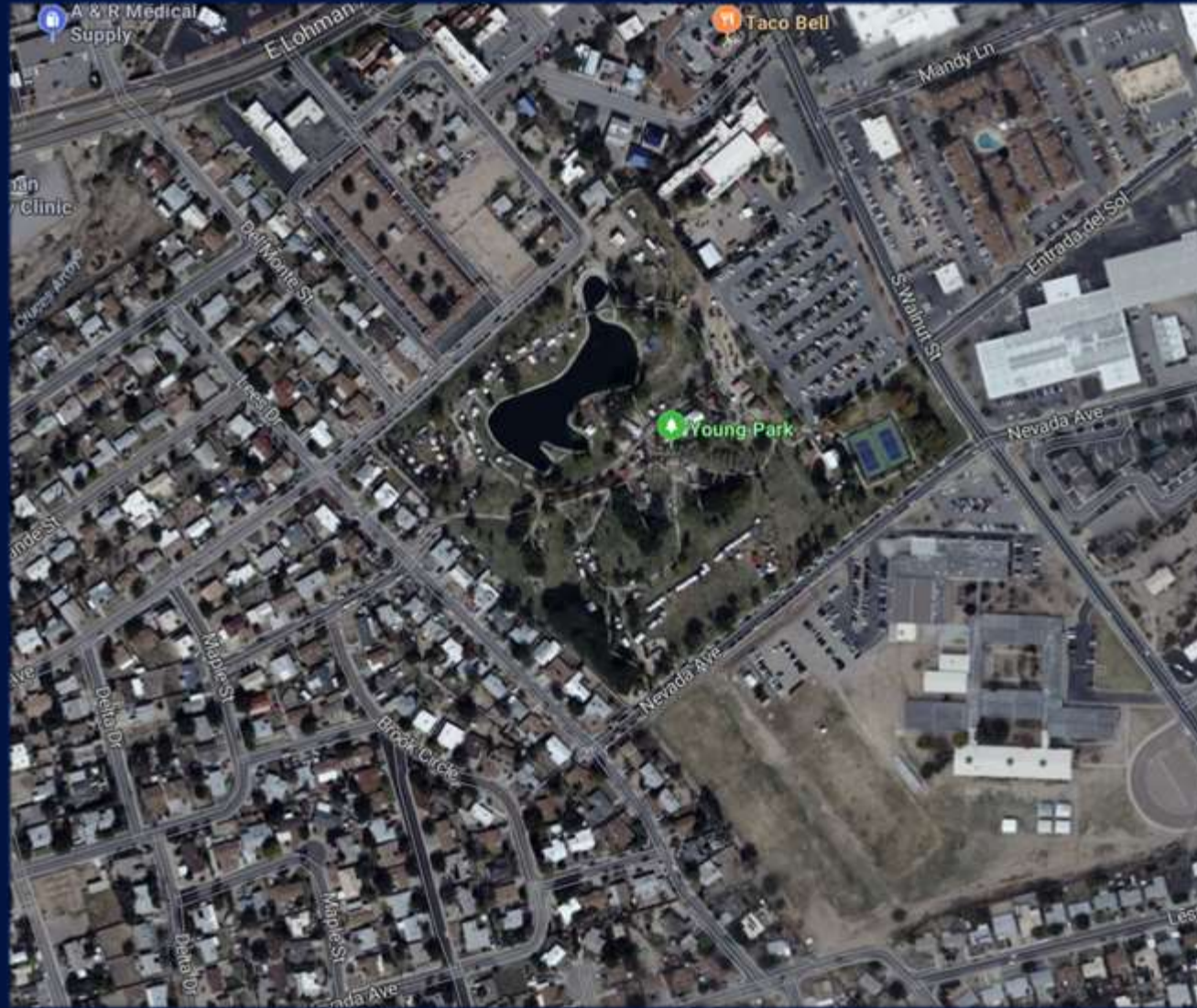
TO PROTECT AND SERVE WITH P.R.I.D.E

# GUNS IN OUR PARKS



TO PROTECT AND SERVE WITH P.R.I.D.E

# GUNS IN OUR PARKS



TO PROTECT AND SERVE WITH P.R.I.D.E



# SENSELESS VIOLENCE



TO PROTECT AND SERVE WITH P.R.I.D.E

# DON'T FORGET PROPERTY CRIME



TO PROTECT AND SERVE WITH P.R.I.D.E

# DON'T FORGET PROPERTY CRIME



TO PROTECT AND SERVE WITH P.R.I.D.E

# 2023-2024 (YTD) JUVENILE STATS

TYPE OF CHARGING	2023	2024 (THROUGH 9/30)
Arrested (Detained)	201	116
Class III Citation	659	390
Total Juvenile Charges	860	506



TO PROTECT AND SERVE WITH P.R.I.D.E



# 2023-2024 (YTD) JUVENILE STATS

## Top 10 Juvenile Offenders

Subject	Total Charges
Juvenile 1: AP	20
Juvenile 2: IH	16
Juvenile 3: AC	12
Juvenile 4: JL	11
Juvenile 5: KM	11
Juvenile 6: MA	10
Juvenile 7: XH	10
Juvenile 8: CR	10
Juvenile 9: AS	10
Juvenile 10: IS	10



TO PROTECT AND SERVE WITH P.R.I.D.E

# 2023-2024 (YTD) JUVENILE STATS

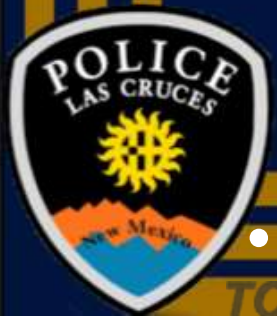
Type of Crime	# of Juveniles Charged
Homicide	5
Aggravated Assault	21
Aggravated Battery	16
Burglary	39
Misdemeanor Assault	66
Misdemeanor Battery	364
Battery on a Peace Officer	12
Auto Theft	32
Unlawful Carrying of a Deadly Weapon	75
Shooting at a House or Dwelling	7



TO PROTECT AND SERVE WITH P.R.I.D.E

# NM JUVENILE JUSTICE ISSUES

- Lack of accountability for repeat offenders
- The risk assessment instrument is inflexible and does not consider:
  - Local jurisdictions law enforcement priorities/delinquency statistics
  - Lack of training at the local LEA level to better understand the tool and know avenues to apply override/discretion to violent offenders.
  - Lack of consideration for victims of crime
  - Lack of local data sharing with LEAs to understand the effectiveness of the tool and for consideration of repeat habitual offenders.
  - Lack of collaboration between CYFD and local LEA's to create alignment between top delinquent offenses, proper responses to afford diversion and/or proper intervention programming to offenders.
- Lack of resources and programs to intervene before kids are stealing cars and shooting each other.



# FELON IN POSSESSION (FIP)

- For 2021 and 2022, 43 felon in possession of a firearm cases were filed.
  - Only 13 of 43 cases had any consequences at all.
    - 27 dismissed/nolle prosequi
    - 6 plead guilty for a sentence of probation (no incarceration)
    - 4 were incarcerated for other crimes (FIP dismissed as a part of a plea agreement)
    - 3 were sentenced to incarceration (20 months, 24 months, 36 months)
    - 3 are still being adjudicated



t

# QUESTIONS



TO PROTECT AND SERVE WITH P.R.I.D.E