

FY26 Budget Request

Meeting the Moment, Building the Future

Elizabeth Groginsky,
ECECD Cabinet Secretary

Thursday, December 12, 2024



NEW MEXICO

Early Childhood

Education & Care Department



ECECD At a Glance



Family Infant Toddler (FIT)

Projected to be served, FY25: **16,995**

Percent eligible served, FY25: **29%**



Home Visiting

Projected to be served, FY25: **9,303**

Percent eligible served, FY25: **66%**²

FY26 increase: 2,400 children



New Mexico PreK

Projected children to be served, FY25: **18,623**

Percent eligible served, FY25: **64%**¹

FY26 increase: 2,700 children



Early Childhood Pay Parity

PreK recipients to date, FY25: **239**

Infant/Toddler recipients, FY25: **122**

Wage Supplement recipients, FY25: 304



Child Care Assistance

Projected to be served, FY25: **30,733**

Percent increase since FY19: **54%**

Projected 0-3-year-olds to be served, FY25: **9,950**

Percent eligible served 0-3, FY25: **27%**

FY26 increase: 5,150 children

¹184% of 4-year-olds and 54% of 3-year-olds served statewide. Includes NM PreK, Head Start, and Title I

²66% of Medicaid-enrolled children served through all home visiting models including Family Connects and private and tribal funded programs

FY26 Budget Priorities



1. Build Capacity

Achieve Universal Access through Greater Capacity

- Attract, recruit, and retain a well compensated and credentialed Early Childhood workforce
- Grow the number of community based child care and NM PreK facilities.



2. Improve Quality

Improve child outcomes through higher quality services

- Enhance the quality of services for children with special education needs
- Set rates at the true cost of care for child care, home visiting, NM PreK, and Family Infant Toddler (FIT)

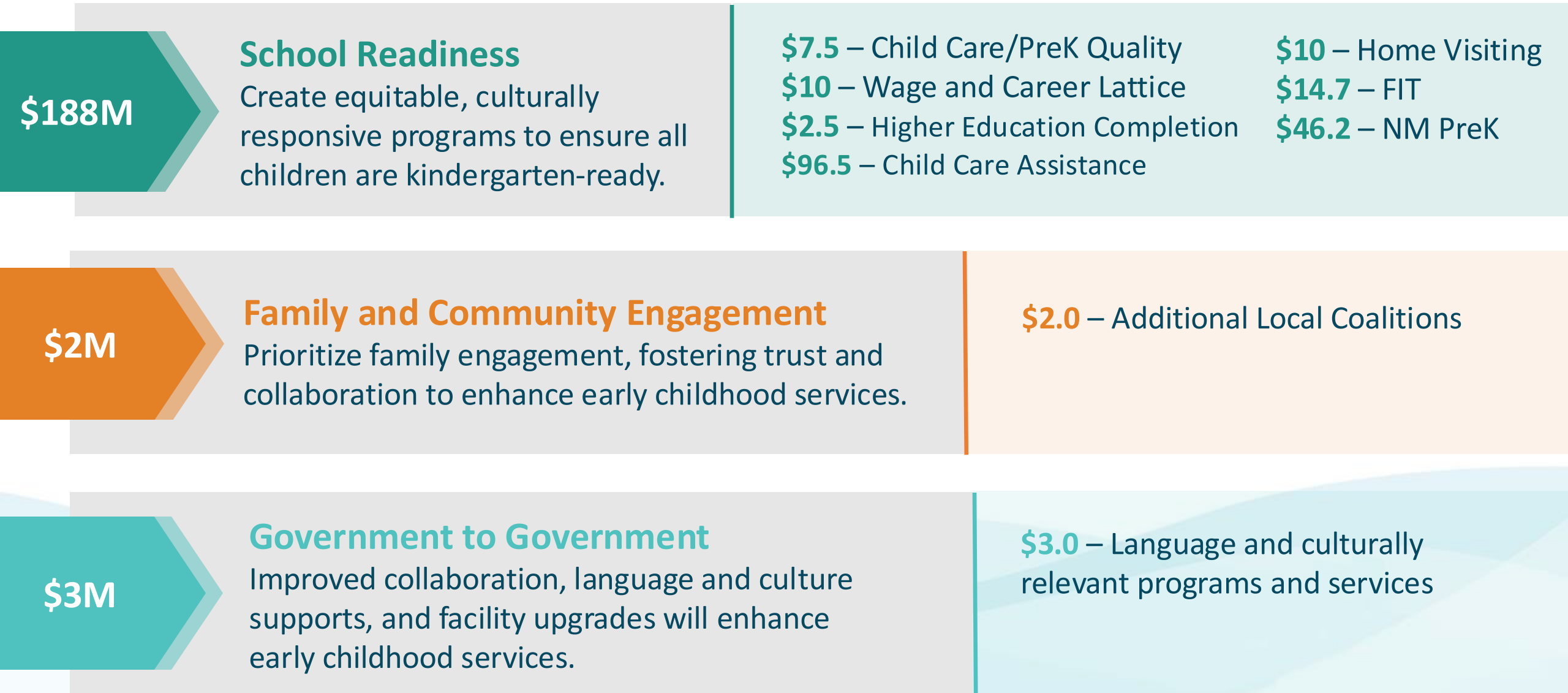


3. Enhance Outcomes

Use outcome-based measures to drive better decision-making and strategic investments

Integrate the Classroom Assessment Scoring System (CLASS) data in NM PreK

FY26 OpBud Request Alignment with Strategic Plan



FY26 OpBud Request Alignment with Strategic Plan

\$0.4M

Early Childhood Ecosystem Alignment

Foster collaboration to create a holistic, family-centered early childhood system.

\$0.4 – Communication and awareness building with families

\$7.5M

Organizational Excellence

Create efficient systems to ensure high-quality customer service.

\$6.0 – 39 FTE to support growth
\$1.5 – Appropriate placement for existing staff

\$1.5M

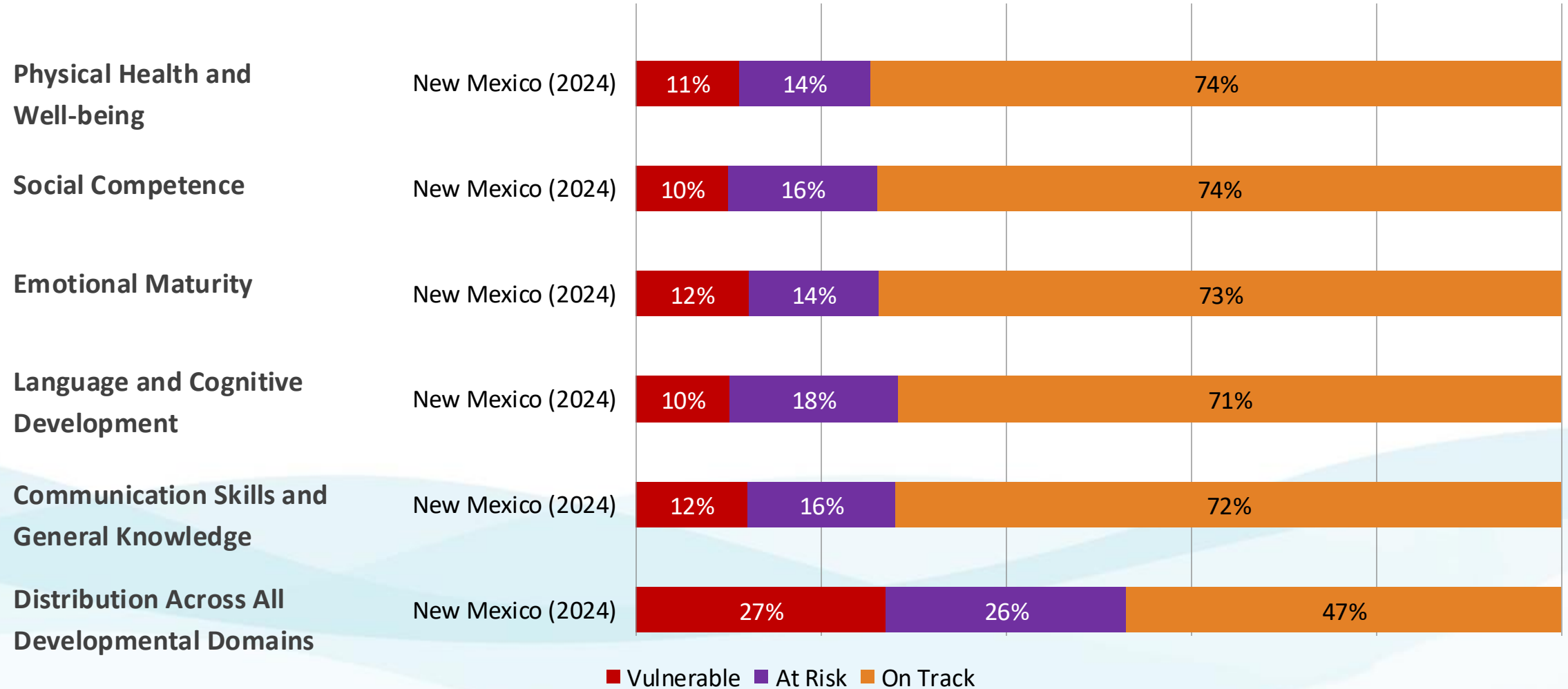
Actionable Data

Share data to guide policy, enhance services, and strengthen understanding of child development.

\$1.5 – Improve data systems and cloud storage

New Mexico's Early Development Instrument (EDI) Results: A population measure of school readiness

EDI Results in Kindergarten by Developmental Domain



FY26 Request by Budget Category - Sources

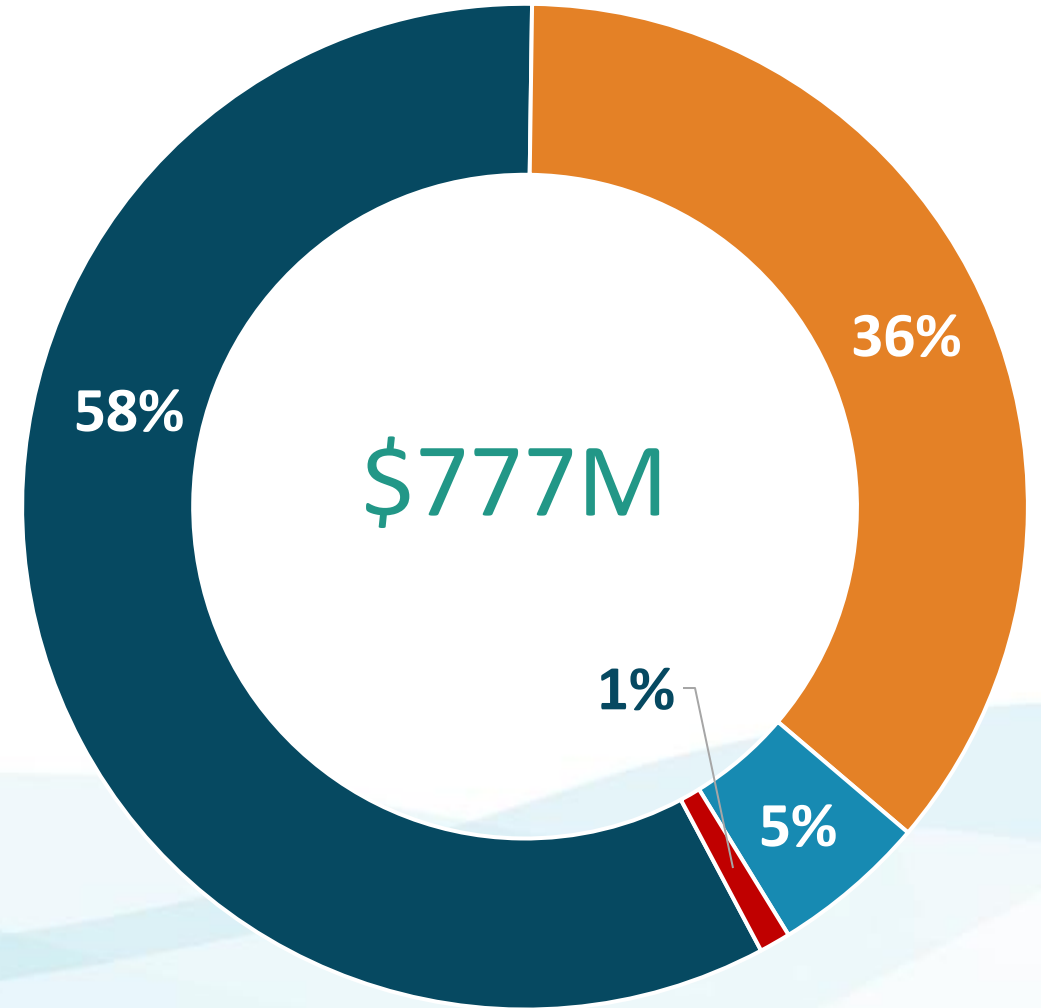
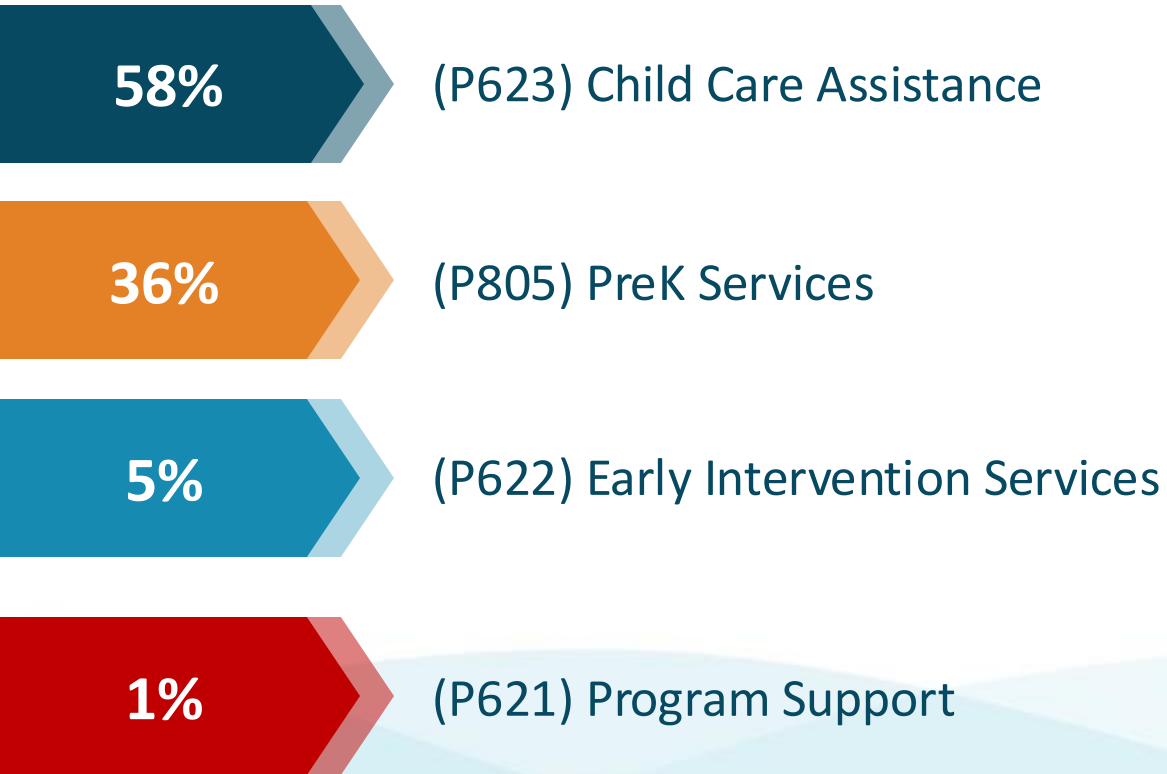
	FY25	FY26	Change %
General Fund Includes Land Grant Permanent Fund	\$348,074	\$513,274	48%
Other Transfers Includes Revenue from Temporary Assistance for Needy Families (TANF) and Early Childhood Trust Fund (ECTF)	\$284,027	\$321,727	13%
Federal Revenue	\$147,154	\$152,623	4%
Other Revenue Revenue from other agencies per statute in HB2, and private sector grants.	\$5,913	\$7,559	28%
Total	\$785,169	\$995,185	27%

FY26 Appropriation Request by Budget Category - Uses

	FY25	FY26	Change %
200 Personnel Services and Employee Benefits: Cost to pay our employees for salary and benefits	\$35,082	\$41,082	17%
300 Contractual Services: Contracts to support the agency	\$111,666	\$136,927	23%
400 Other Expenses: Care and Support as well as Grants	\$603,121	\$777,187	29%
500 Other Financing: Other Revenue not meeting General Fund criteria and Interagency Transfers	\$35,302	\$39,989	13%
Total	\$785,169	\$995,185	27%

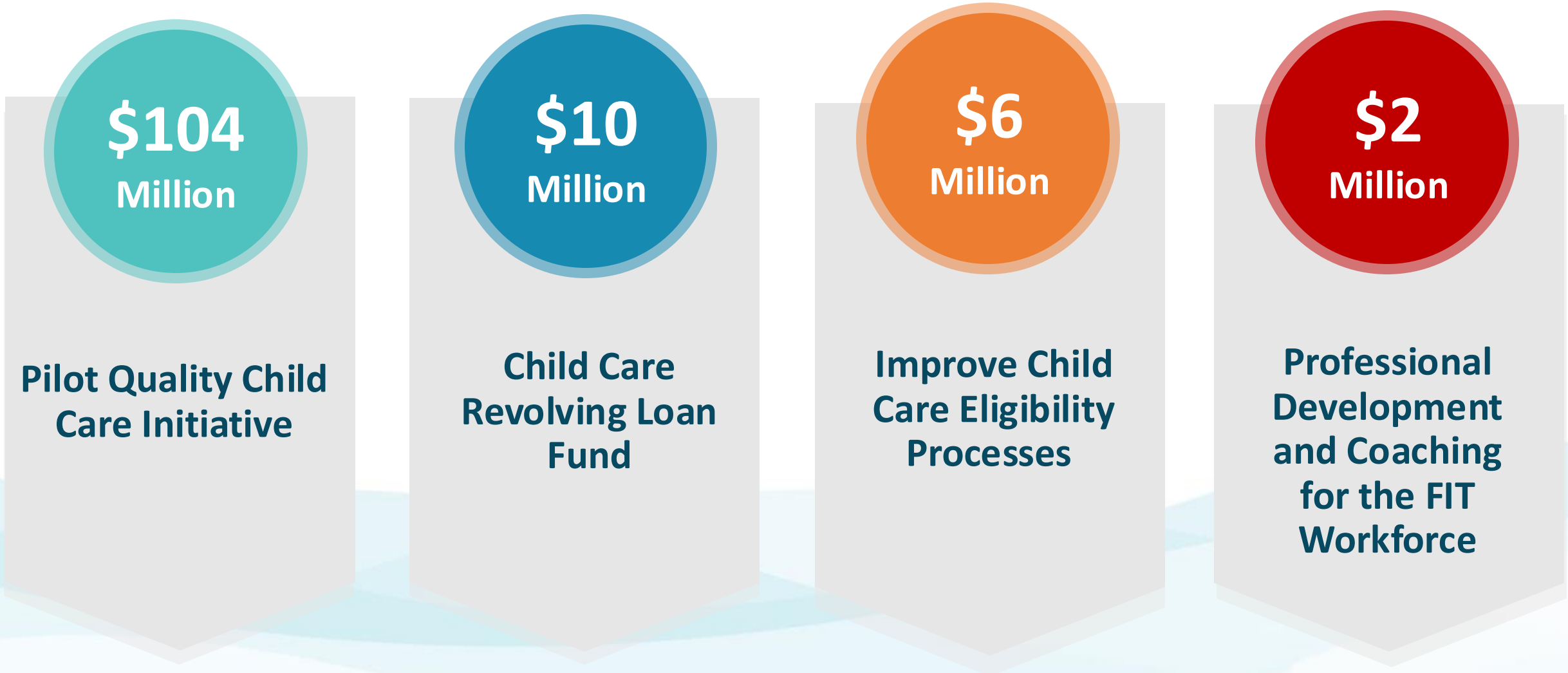
FY26 Appropriation Request

400 Category Breakdown



Includes all funding sources

FY26 Special Appropriation Requests - \$122.6M



Family Infant Toddler (FIT) Supplemental Funding Request

\$7.6 Million

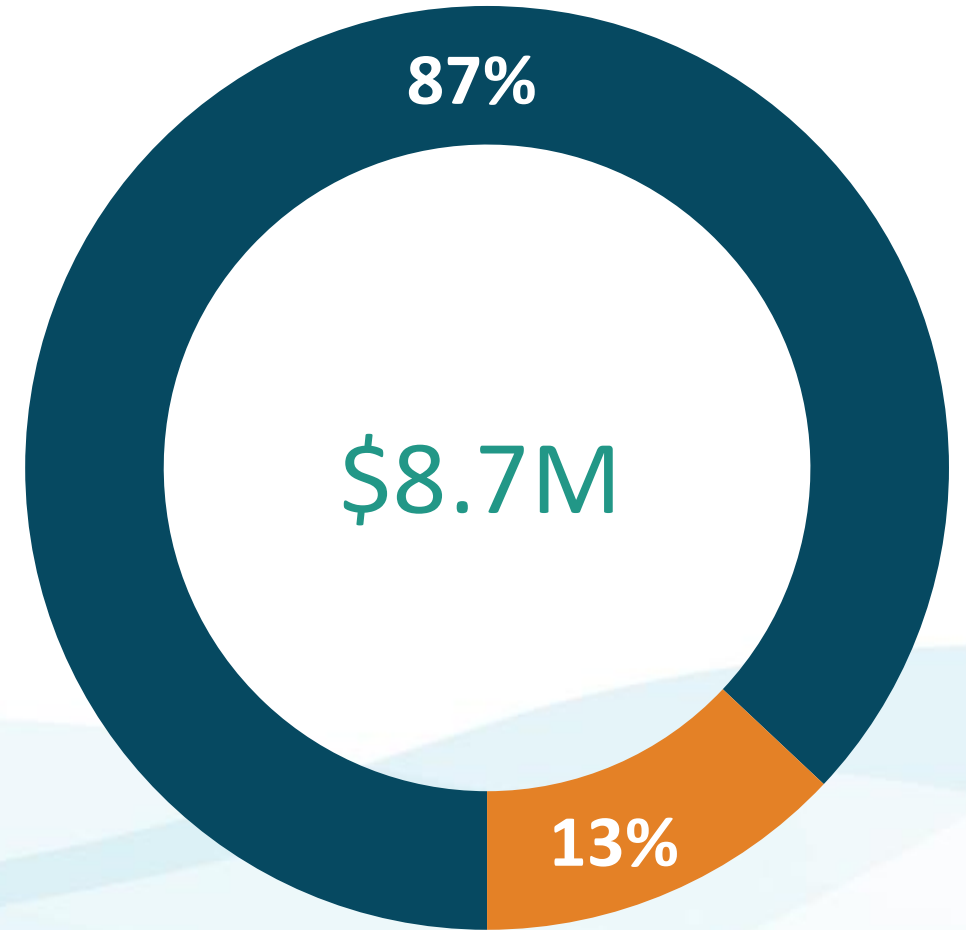
Budget Shortfall

FIT is a federal entitlement program. This funding is needed to meet this requirement and ensure New Mexico infants and toddlers with development delays and disabilities are well served.

\$1.1 Million

Rate Increase for the 4th Quarter of FY25

ECECD is requesting funding to support a rate increase for Family Infant Toddler (FIT) providers in the 4th quarter of FY25.





Investments in early childhood education and care yield substantial long-term benefits for individuals and society—a 13% annual return on investment through improved outcomes in education, health, and economic productivity.



Executive Leadership Team



Elizabeth Groginsky
Cabinet Secretary
Email: Elizabeth.Groginsky@ececd.nm.gov
Ph: 505-827-7684



Mark Dominguez
Administrative Services Division Director
Email: mark.dominguez@ececd.nm.gov
Ph: 505-695-4239



Sandy Trujillo-Medina
Early Care Education and Nutrition
Division Director
Email: sandy.trujillomedina@ececd.nm.gov
Ph: 505-231-3219



Cotillion Sneddy
Assistant Secretary for Native American
Early Education and Care
Email: cotillion.sneddy@ececd.nm.gov
Ph: 505-827-7684 EX: 7684



Ali Hedrick
FSEI Director
Email: ali.hedrick@ececd.nm.gov
Ph: 505-469-1742



Lela Wendell
Policy, Research, and Quality
Initiatives Division Director
Email: lela.wendell@ececd.nm.gov
Ph: 505-531-7215



Sara Mickelson
Deputy Secretary
Email: sara.mickelson@ececd.nm.gov
Ph: 505-827-7684 EX: 7684



Diana Sandoval-Tapia
Special Projects Coordinator
Email: diana.sandoval-tapia@ececd.nm.gov
Ph: 505-469-6912



Shelley Strong
General Counsel
Email: shelley.strong@ececd.nm.gov
Ph: 505-670-3779



Sandeep Patel
Chief Information Officer
Email: sandeep.patel@ececd.nm.gov
Ph: 505-660-8758



Helen Quintana
Human Resources and
Constituent Services Director
Email: HelenT.Quintana@ececd.nm.gov
Ph: 505-660-6975



Sonya Martinez
Acting Communications Director
Email: sonya.martinez@ececd.nm.gov
Ph: 505-670-8338