

Supporting our State and our Students

---

# FY26 UNIFIED HIGHER EDUCATION PRIORITIES

Endorsed by the Higher Education Regents Coalition

New Mexico Council of University  
Presidents (CUP)

New Mexico Independent Community  
Colleges (NMICC)

New Mexico Association of Community  
Colleges (NMACC)

Legislative Finance Committee

December 11, 2024

# THANK YOU

---

**Eastern New Mexico University \* New Mexico Highlands University \* New Mexico Institute of Mining and Technology \* New Mexico State University \* Northern New Mexico College \* Western New Mexico University \* University of New Mexico**

**Central New Mexico Community College \* Clovis Community College \* Luna Community College \* Mesalands Community College \* New Mexico Junior College \* New Mexico Military Institute \* Northern New Mexico College \* San Juan College \* Santa Fe Community College \* Southeast New Mexico College \* Western New Mexico University**

**ENMU-Roswell \* ENMU-Ruidoso \* NMSU-Alamogordo \* NMSU-Dona Ana \* NMSU-Grants \* UNM-Gallup \* UNM-Los Alamos \* UNM-Taos \* UNM-Valencia**

## **WITH YOUR SUPPORT WE HAVE -**

- increased academic enrollment by 9.7% since Fall 2021
- increased workforce training enrollment by 9.7% since FY2021



# INSTRUCTION & GENERAL

---



## FORMULA FUNDING

a **5.0% increase** in formula funding, **\$42.1 million**.

## NON FORMULA ADJUSTMENTS STUDENT SERVICES/BASIC NEEDS

**\$4.0 million** distributed across all institutions, including NMMI.

## FACULTY SUPPLEMENTAL COMPENSATION

**\$8.0 million** distributed across all institutions, including NMMI.

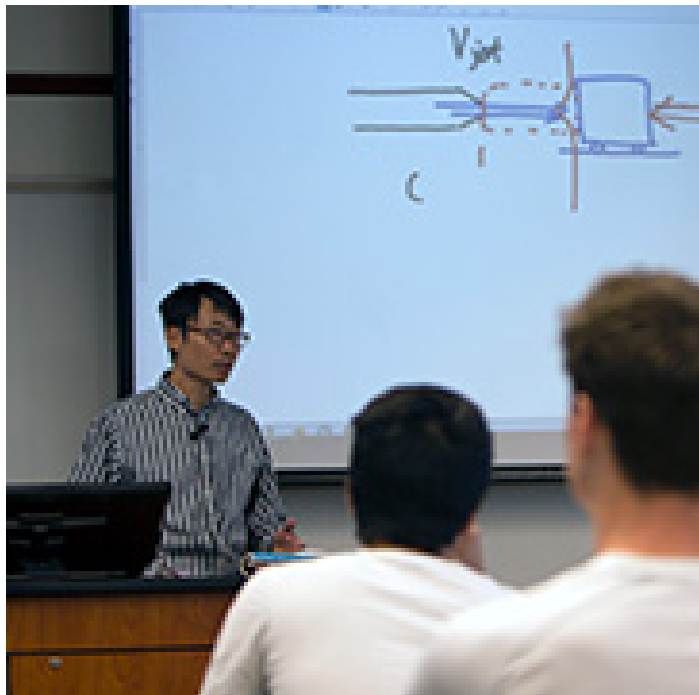
## NCHEMS STUDY

### We request:

- Institutions be held harmless
- the study include a small school component,
- the study encourage collaboration between institutions.

# COMPENSATION

---



## MINIMUM 4.0% INCREASE

Allow institutions the flexibility to implement an 'average' increase, ***\$46.0 million.***

## STATE MANDATED EMPLOYEE BENEFIT ENHANCEMENTS

Request funding be provided to institutions for increased institutional costs due to state changes in employee benefits, such as increasing the mandated employer share of insurance benefits.

# NON-RECURRING REQUESTS

---

## Dual Credit

**\$10.0 million** to support programs over 3 - 5 years.

## Building Renewal & Replacement

**up to \$100.0 million**, a minimum of \$30.0 million.

## Equipment Renewal & Replacement

**up to \$10.0 million**, a minimum of \$5.0 million.

## Campus Safety

**\$10.0 million** for campus safety equipment, including access controls.



# NON-RECURRING REQUESTS

---

## **Technology Enhancement Fund**

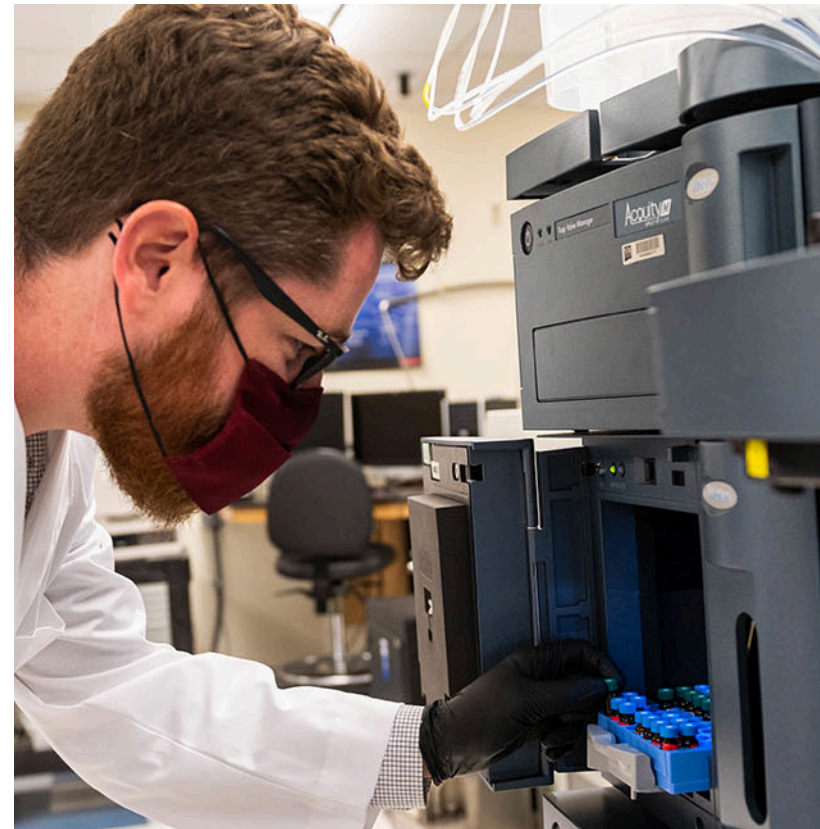
**\$50.0 million** appropriation to the fund, for expenditure through FY2027.

## **Faculty Endowment**

**\$10.0 million** with required institutional match.

## **Expanded Cybersecurity**

**\$11.7 million**, institutions will work in conjunction with DoIT and HED.



# FINANCIAL AID

---

## Lottery & Opportunity Scholarships



### We support -

- continued funding, recognizing the relationship between state appropriations for institutions and setting tuition & fee rates.
- review of the programs, including sustainability.
- recognition of the needs of students in allowing exemptions for at-risk students and hardships.

# PRIORITY RECAP

# 2025 LEGISLATIVE SESSION

## **I&G FUNDING**

- 5.0% increase in I&G funding
- \$4.0 million for targeted Student Services/Basic Needs
- \$8.0 million for supplemental faculty compensation

## **COMPENSATION**

- 4.0% minimum, allowing for flexibility
- Funding for state mandated employee benefit changes

## **NON-RECURRING**

- \$10.0 million for Dual Credit
- \$50.0 million for the Technology Enhancement Fund
- \$10.0 million for Campus Safety
- \$10.0 million for Faculty Development
- up to \$100.0 million for Building Renewal & Replacement
- up to \$5.0 million for Equipment Renewal & Replacement
- \$11.7 million for Cybersecurity



# THANK YOU FOR YOUR SUPPORT!

**Central New Mexico Community College**  
**Clovis Community College**  
**Eastern New Mexico University**  
**ENMU - Roswell**  
**ENMU - Ruidoso**  
**Luna Community College**  
**Mesalands Community College**  
**New Mexico Highlands University**  
**New Mexico Institute of Mining and Technology**  
**New Mexico Junior College**  
**New Mexico Military Institute**  
**New Mexico State University**  
**NMSU - Alamogordo**  
**NMSU - Dona Ana**  
**NMSU - Grants**  
**Northern New Mexico College**  
**San Juan College**  
**Santa Fe Community College**  
**Southeast New Mexico College**  
**Western New Mexico University**  
**University of New Mexico**  
**UNM - Gallup**  
**UNM - Los Alamos**  
**UNM - Taos**  
**UNM - Valencia**



NEW MEXICO  
**ASSOCIATION of  
COMMUNITY  
COLLEGES**

Endorsed by the Higher Education Regents Coalition