

An Overview of School-Based Behavioral Health Supports

Presented to the Legislative Education Study Committee

Senator Bill Soules, Chair

Rep. Andres Romero, Vice Chair



Leslie. G. Kelly, MA
Behavioral Health Consultant
NMPED Safe and Healthy Schools Bureau
Kurt.Steinhaus@state.nm.us



PED School Based Behavioral Health Initiatives and Supports:

U.S. Department of Education (USDE) and
Substance Abuse and Mental Health
Services Administration (SAMHSA)
School Mental Health Grants

Social and Emotional
Learning (SEL)

PED School Behavioral Health
License/Free Care Act

PED Culturally Appropriate
Social Services Task Force

USDE Expanding Opportunities Project

- Expanding Opportunities Project (EOP) – 5 years, ~\$9 million
- Began October 2020 – a total of 215 participants to date
- Goals:
 - Increase the number and quality of mental health service providers in high need schools, particularly in rural and Native American communities.
 - Provide additional resources to students enrolled in our partnering universities behavioral health programs.
 - Support school behavioral health personnel currently working in those identified communities.

USDE Expanding Opportunities Project (continued)

- Recruitment:

- 1. Loan Repayment/Tuition Reimbursement for students seeking behavioral health degrees to work in schools
- 2. Stipends for student interns/trainees who complete internships or practicums in an identified LEA **AND** agree to work in an identified LEA for 2 years post graduation
- 3. Licensure exam fees/Licensure costs reimbursed

- Retention:

- 1. Stipends for school providers working in identified LEA's

- For more info, visit www.NMEOP.com

SAMHSA Project AWARE grant

- Project AWARE grant – 5 years, ~\$9 million
- Purpose: Expand the capacity of the PED in partnership with CYFD and Socorro, Farmington, and Santa Fe school districts to promote the healthy development of school-aged youth and prevent youth violence.
- Goals:
 - increase awareness of mental health (MH) issues among school –aged youth;
 - provide training for school personnel and other adults who interact with school-aged youth to detect and respond to MH issues;
 - connect school aged youth who may have serious MH issues and their families to needed services;
 - develop the infrastructure to sustain MH services & supports for school-aged youth after funding ends; and
 - utilize program evaluation to ensure continuous quality improvement.

Social and Emotional Learning (SEL)

- New Mexico Social and Emotional Learning Framework developed and launched in January 2021.
- GEERS/ESSER funds for 2 rounds of SEL “mini-grants” to schools/districts.
 - Round 1 – 78 awards for a total of \$786 thousand.
 - Round 2 – 60 awards for a total of \$894 thousand.
- UNM Project ECHO series during 2020-2021 school year SEL for Educators, 2021-2022 school year SEL for School Leaders and SEL Leaders
- Launched free SEL portal for schools in August of 2021, 7 mindsets platform (www.NewMexicoSELportal.com)

New Mexico's SEL Portal



The screenshot shows the homepage of the New Mexico Social and Emotional Learning Portal. At the top, there is a navigation bar with a 'Select Language' dropdown, the 'Path to Wellness NEW MEXICO' logo, and the '7 MINDSETS Portal' logo. Below the navigation bar is a large banner image of diverse students smiling. Overlaid on the banner are four menu items: 'Getting Started', 'Social Emotional Learning Tools', 'Helpful Resources', and 'Educator Zone'. Below the banner, the main heading reads 'Welcome to the New Mexico Social and Emotional Learning Portal'. To the left of the main text is a video thumbnail featuring Dr. Kurt Steinhaus, NM Secretary of Education, with a red play button icon. The main text area contains a welcome message, a paragraph about the partnership with 7 Mindsets, and instructions on how to get started. A 'Help' button is located in the bottom right corner of the page content.

Select Language

Path to Wellness NEW MEXICO

7 MINDSETS Portal

Getting Started

Social Emotional Learning Tools

Helpful Resources

Educator Zone

Welcome to the New Mexico Social and Emotional Learning Portal



Dr. Kurt Steinhaus, NM Secretary of Education

Welcome to the New Mexico Social and Emotional Learning Portal. We are committed to empowering every student, educator and parent in New Mexico with the social and emotional mindsets and skills needed to thrive in and out of school.

We have partnered with the [7 Mindsets company](#) to provide free videos, lessons, curriculum, activities and resources for every student, parent, educator, and school in New Mexico to tackle issues like relationship skills, responsible decision making, self-awareness, and much more.

To get started, click "[Social Emotional Learning Tools](#)" above to access our curated collection of resources, or educators can register for access to the "[Educator Zone](#)" above with your school contact information to access full courses and lessons.

Help

PED School Behavioral Health License

- PED is creating a **School Behavioral Health License** to allow more school employees to provide routine behavioral health services that are within their scope of practice
- Combining existing behavioral health requirements with PED's license to expand the number of qualified behavioral health professionals
- Currently, only school psychologists and school social workers can provide Medicaid billable behavioral health services based on the scope of their license

School Counselors Do...	School Counselors Do Not...
Make individual academic plans and set individualized goals.	Diagnose mental health illnesses or prescribe treatment plans.
Give classroom lessons and deliver curriculum.	Give individual clinical mental health counseling.
Give short-term counseling to students and make referrals for long-term counseling.	Conduct one-on-one skill building sessions.
Conduct small group targeted counseling, skill building, and support sessions.	Conduct long-term group counseling for all students.

Medicaid in the Schools

- Beginning July 2022, behavioral health services for all Medicaid-eligible students will be billable due to revisions to the federal Free Care Rule.
- Currently, only health and behavioral health services written into a student's IEP are eligible to be billed to Medicaid.
- The revision of the Free Care Rule will allow for those services to be billed for non-IEP students. 30-40% of the billed services come back to the school and can support partial salaries and behavioral health supports in the schools.
- HSD's budget request reflects expanded capacity for supporting this program and PED plans to request additional matching funds to support providers in schools

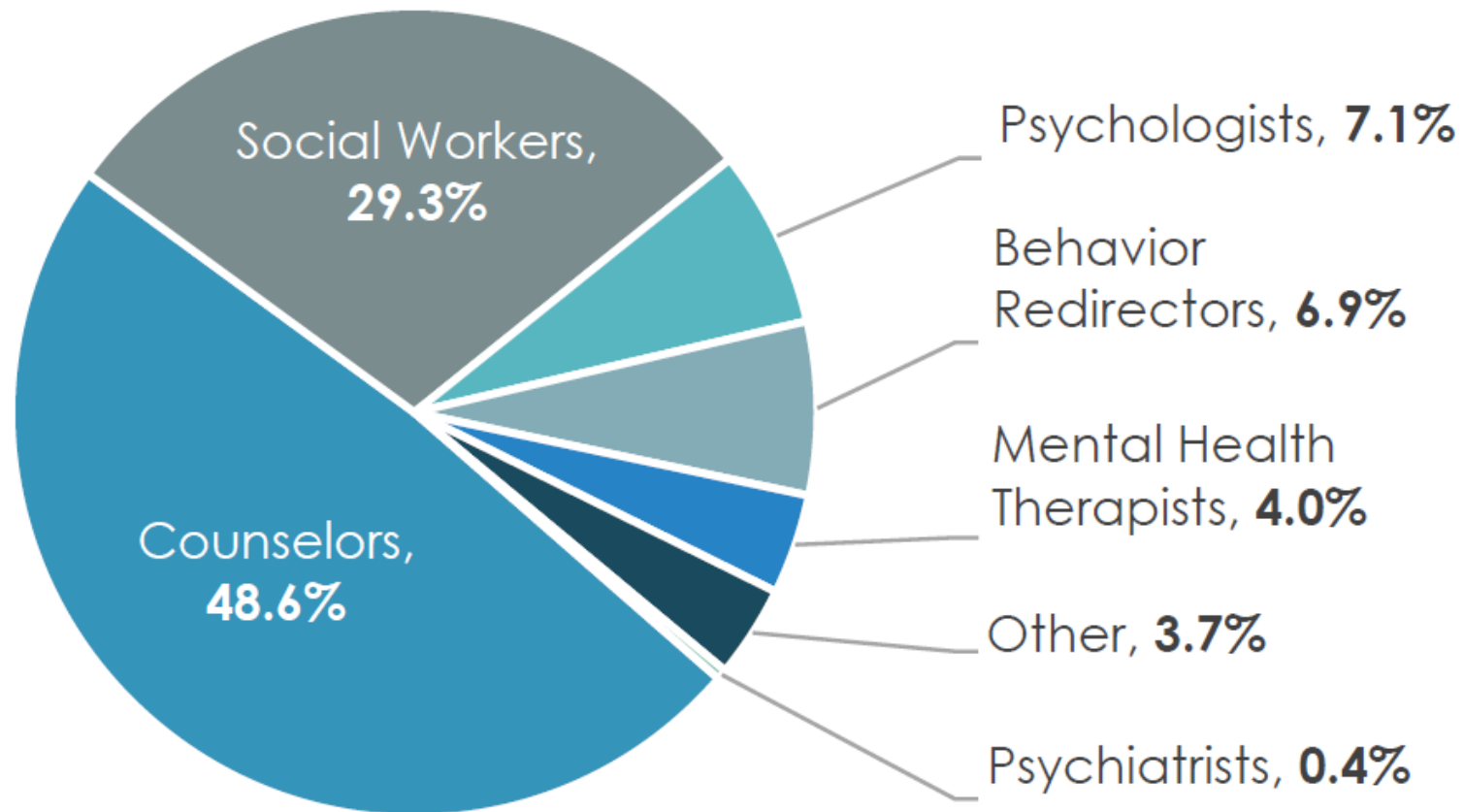


Culturally Appropriate Social Services Task Force

- The task force accomplishes the goals outlined in HB287, a bill that passed but was vetoed.
- The governor directed PED to convene a task force to conduct asset mapping and gap analysis of public school students' access to culturally appropriate social services statewide.
- In Summer 2020, a behavioral health services inventory was implemented.
- The inventory examined
 - New Mexico's behavioral workforce,
 - the coordination of services,
 - types of services provided,
 - barriers to students and families accessing behavioral health services,
 - perceived impact of COVID, and
 - resources districts need to address the behavioral health needs of every student.
- The data collected is useful information but is not complete. The task force report will contain strong recommendations to meet districts' needs.

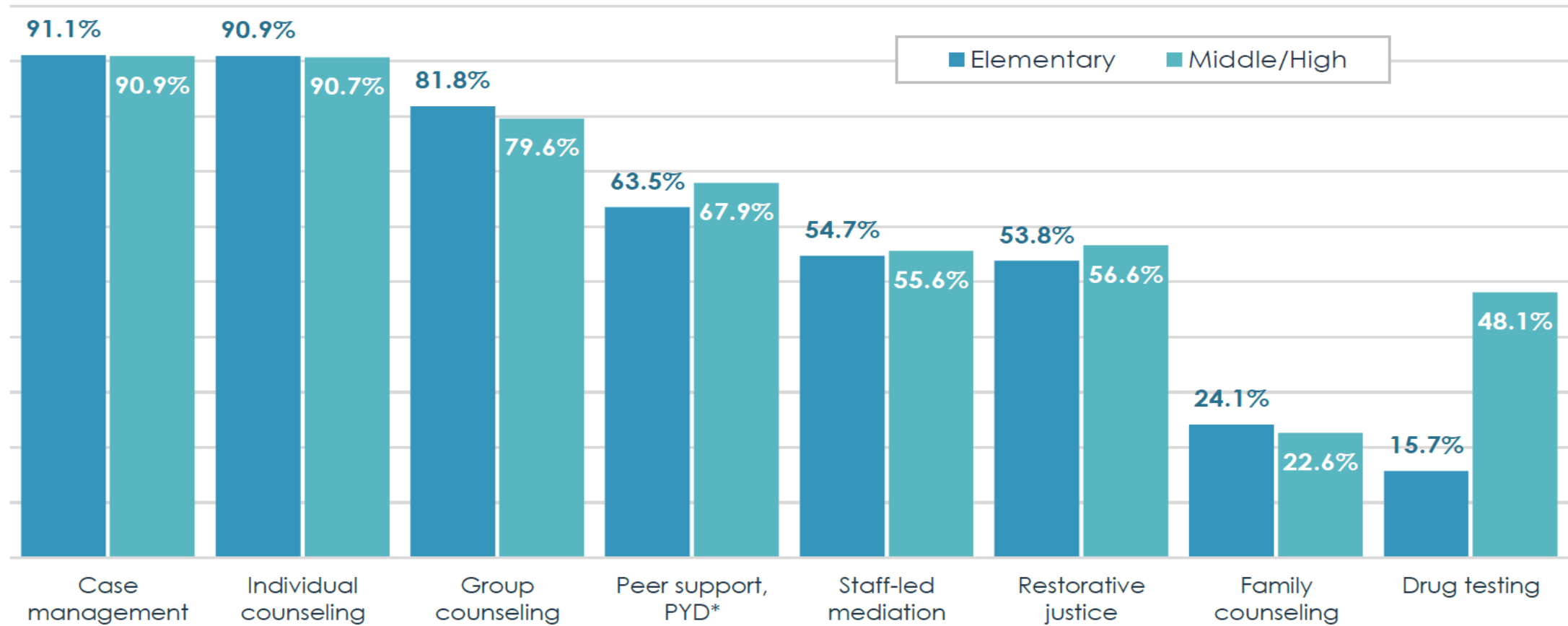
New Mexico School Behavioral Health Workforce

Figure 1: Composition of the Behavioral Health Workforce in New Mexico Schools.



Behavioral Health Services Provided in New Mexico Schools

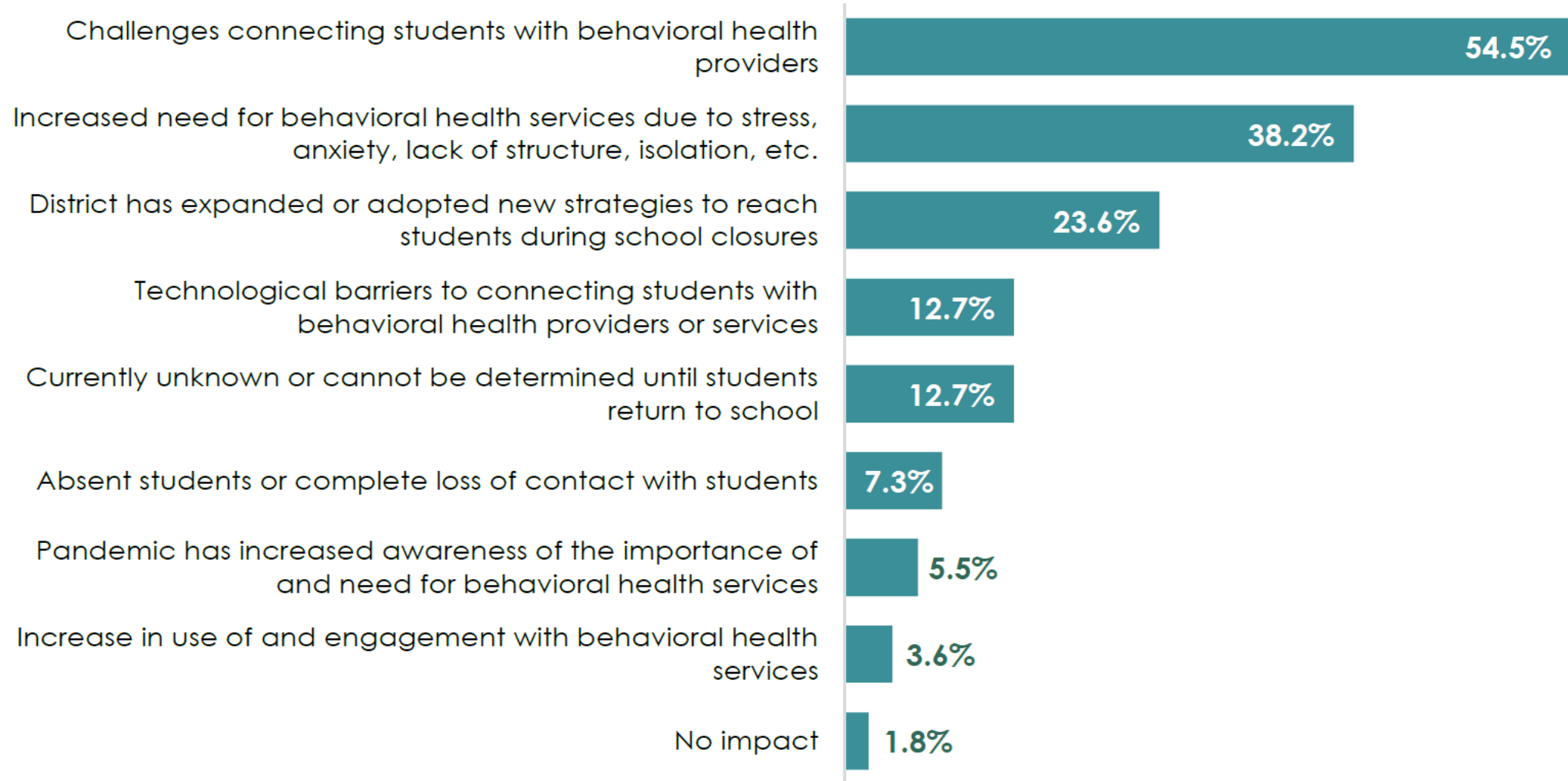
Figure 7: Behavioral Health Services Offered in Some or All Elementary and Middle/High Schools in the District.



*PYD=Positive Youth Development

Impact of COVID-19 Pandemic on School Behavioral Health Services

Figure 11: Perceived Impacts of COVID-19 on School-Based Behavioral Health Services.



Safe and Healthy Schools Bureau Supports:

- Wellness policy
- Attendance for Success
- Bullying prevention
- Expecting and Parenting Youth
- School Safety plans
- Behavioral Threat Assessments
- Physical Health, Health Education and Nutrition
- Covid-19 Response
- Partnerships with DOH OSAH and CYFD
- Title IV funds:
 - Well-Rounded Education
 - Safe and Healthy Students
 - Effective Use of Technology

Thank you!

Q&A

Leslie G. Kelly

Leslie.Kelly@state.nm.us

505-819-9676

