

Leveraging Data for Student Success in New Mexico



Paige Kowalski, Executive Vice President
November 14, 2024





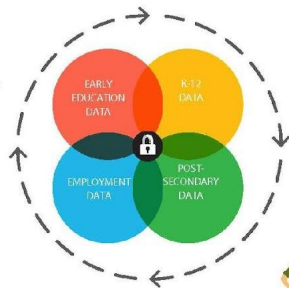
We advocate to **change
the role of data to ensure
that data works for
everyone navigating
their education and
workforce journeys.**

Grace's Path to Success

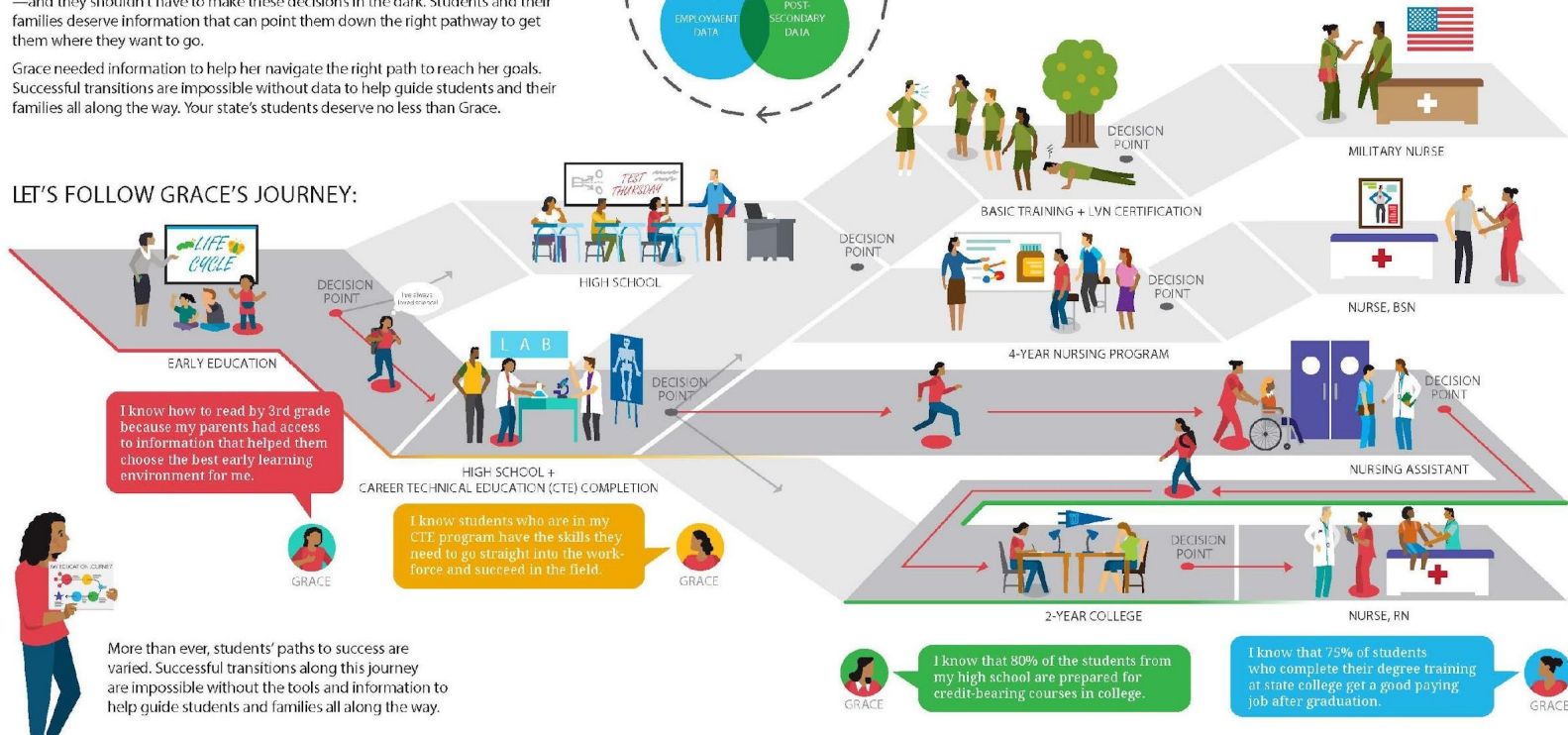
Information is critical to support student success all along the way.

Students' pathways to success are increasingly varied. But no matter the path, students must make choices that shape their future options and opportunities—and they shouldn't have to make these decisions in the dark. Students and their families deserve information that can point them down the right pathway to get them where they want to go.

Grace needed information to help her navigate the right path to reach her goals. Successful transitions are impossible without data to help guide students and their families all along the way. Your state's students deserve no less than Grace.



LET'S FOLLOW GRACE'S JOURNEY:



Access to data drives smarter decisions and strengthens investments in education and workforce pathways

Robust, strongly governed SLDSs help answer questions like:

Given the future needs of industry in our state/region/community, to what extent do our K–12 programs prepare students for those jobs, and to what extent do we need additional programs to meet industry needs?

What is the existing state and local labor market landscape, and what is the marketplace forecasted to look like in coming years?

What resources or supports are most effective at helping a struggling student to stay in school and complete their program of study?

How could working with different types of researchers help answer the questions prioritized in the state learning agenda?

Across the Country, States are Modernizing their SLDS in order to:



Help students seamlessly navigate transitions from high school into college and career pathways



California's College Guidance Initiative (CCGI) bridges gaps between high school and college, providing K-12 districts and higher education with tools that streamline tasks, and help quickly identify students who need more help across ~ 1,000 school districts.

Minnesota is using its SLDS (MN SLEDS) to pilot an auto-admission program for high school students from low-income families, using data and modernizing systems to reduce barriers to postsecondary access.



Enable job seekers to navigate education and career pathways that lead to high-quality careers

Indiana's CTE Employer Connector enables employers to access information about students who have completed CTE programs, facilitating the pathway between high school and postsecondary.



Give policymakers access to data that helps them make decisions and investments.

The Virginia Office of Education Economics' (VOEE) Graduate Supply & Demand Occupation dashboard is designed to provide and clarify regional occupational supply and demand data to practitioners, policymakers, and the public.

What do you want your SLDS to do for the people in your state?



Reporting-Driven

Enable state education & workforce agencies comply with federal and state reporting requirements



Research-Driven

Support researchers & decision makers with accessing data to answer key questions about the state's education & workforce systems



Action-Driven

Provide "just-in-time" data to a wide array of stakeholders to allow people to take action with stronger data

Traditional view of SLDS

Emerging view of SLDS

What we hear from policymakers in other states:

I can't find the data I need to make informed decisions.

My constituents struggle to find data that is actionable, relevant, or easy to understand.

We have invested in our SLDS but it is not meeting our needs.

Our access to data depends on who is in charge of the education agency.

Our access to data depends on who is in charge of the education/higher education/workforce agency.

I don't know who to talk to in order to improve data tools in my state.

Does this resonate?

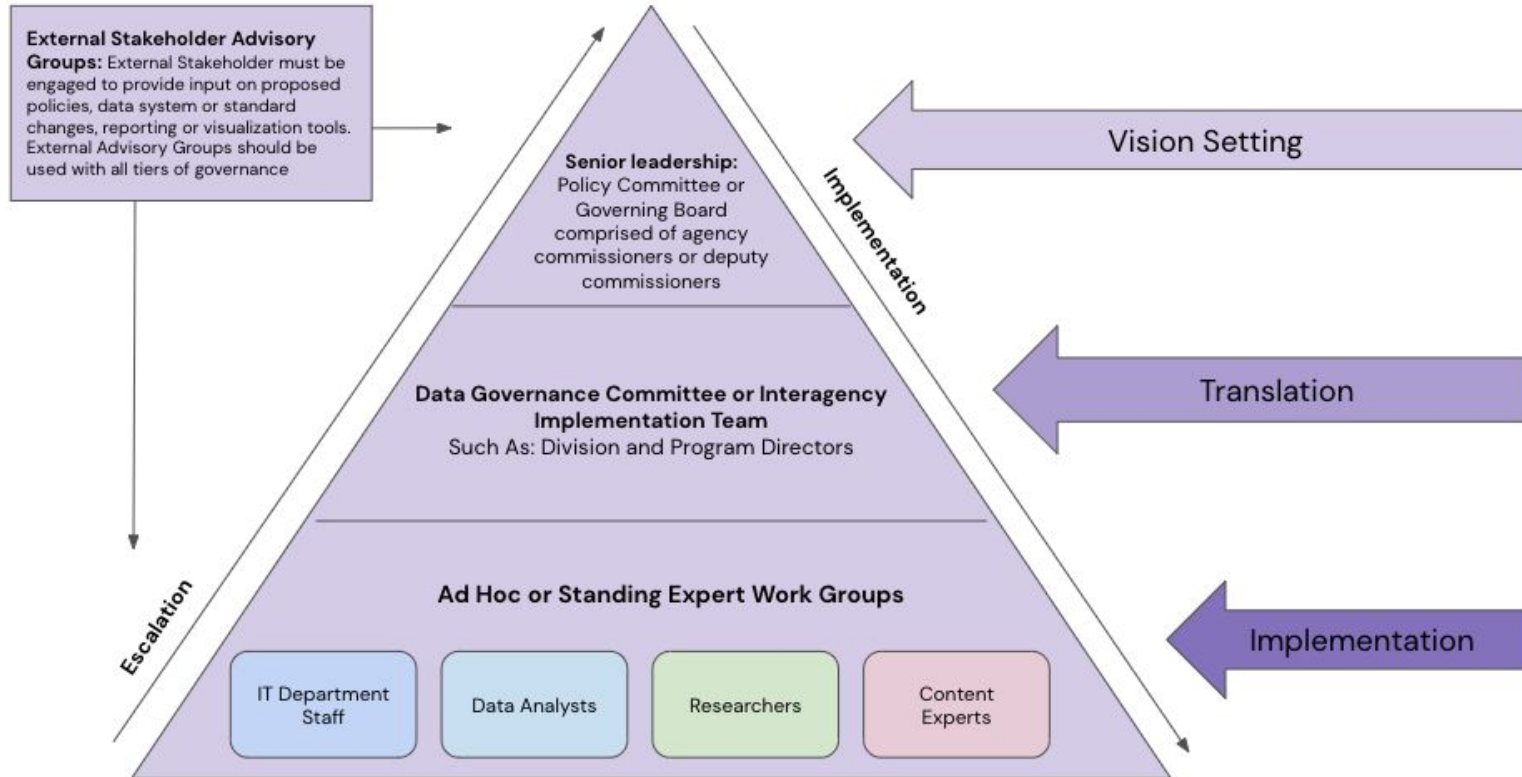
State Policy Recommendations

To reimagine SLDSs, states must prioritize these enabling conditions:

1. Codify cross-agency data governance in state law.
2. Establish an independent entity to administer the state's SLDS.
3. Map existing assets to identify system strengths and limits.
4. Engage the public to prioritize data access needs and seek continual feedback.
5. Fund SLDSs and the source systems that contribute data to them.
6. Develop legal and privacy frameworks to enable and guide state data efforts.
7. Develop and act on rollout plans when building data access.
8. Invest in the talent and human capacity needed to modernize SLDSs toward access.
9. Center privacy.
10. Support local leaders in building their own capacity to use data.

Cross-agency data governance is a **formal leadership-level body responsible and accountable for making decisions** about how data linked between state agencies is connected, secured, accessed, and used to meet state education and workforce goals.

The Decisionmaking Pyramid



*This graphic contains a sample list of the types of workgroups a state could engage

Effective data governance is key to ensuring that data linked between state agencies can be put to work to meet state goals.

Sustainability. Data governance creates sustainability for the SLDS by ensuring that the decisions and priorities set are codified and persist through administrations and leaders.

Transparency and Trust. Data governance ensures that diverse stakeholders are at the decisionmaking table at every. By participating in open meetings and being heard, they gain trust in the SLDS and Board.

Policy Alignment. Policymaker leadership in cross-agency data governance ensures that SLDS decisions are made through a multiagency policy lens, with an emphasis on priorities that require collaboration.










Accountability. Data governance ensures that leaders are accountable (by law and by the public) for data decisions and that those decisions happen in the sunshine.

Access. Data governance is the best way for state leaders to agree on a shared vision for how its SLDS can best be leveraged to provide people, agencies, and policymakers with the appropriate access to data and analyses.

Privacy and Security. In codifying data governance, there is a clear body responsible and accountable for establishing how people's data will be protected.

Cross-Agency Data Governance Legislation Timeline

From 2021 to 2024, five additional states enacted legislation to codify cross-agency data governance, joining the four states that had already done so before 2021.

2007	2010	2013	2015	2021	2023	2024
 Washington	 Maryland	 Kentucky	 North Dakota	 California	 Alabama  Montana  Rhode Island	 Colorado

How have other states pursued cross-agency data governance?

State Legislators Led the Way

Maryland
Codifying
cross-agency data
governance

2010



California
Setting a new
standard for a
service-oriented SLDS

2021



Virginia
Mandating a study
to improve the SLDS

2024

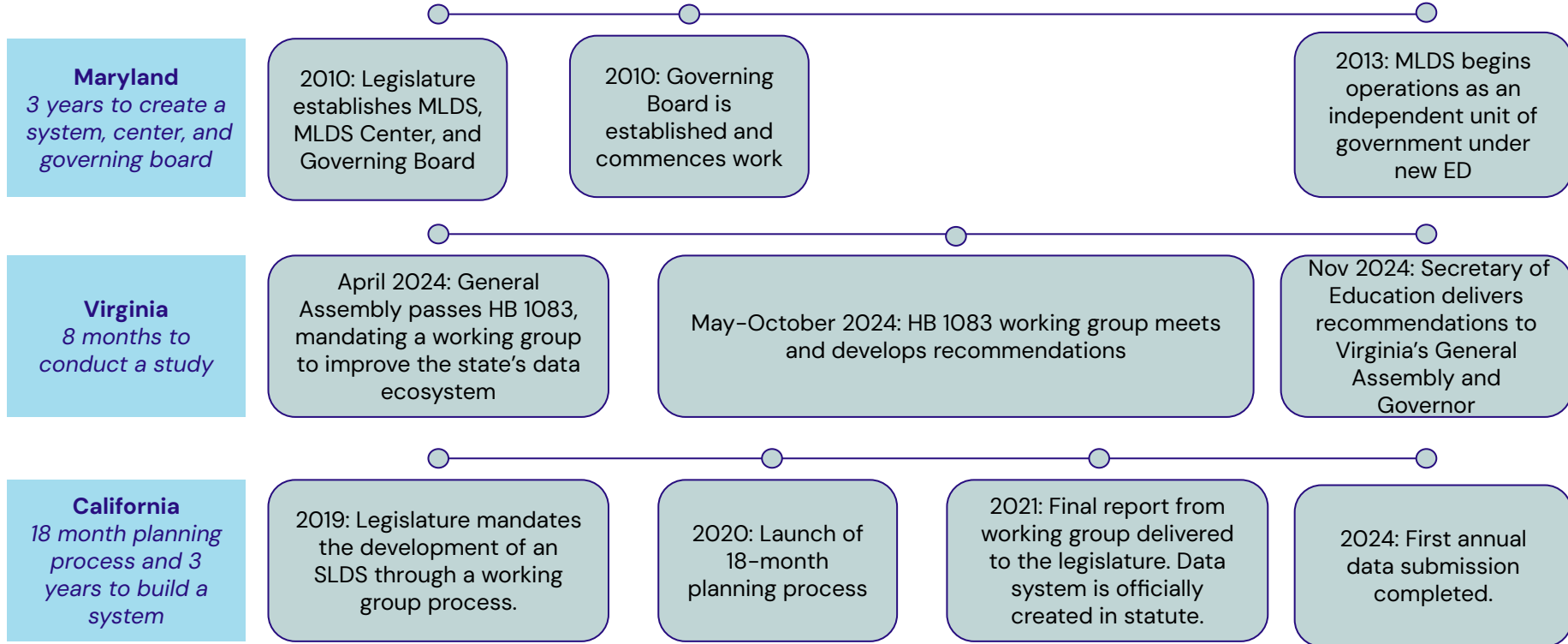


In response to the 2008 recession, and a desire to better understand and prepare its workforce, Maryland's legislature was the first to codify governance for its SLDS. The creation of the governing board ensured that the entity would be able to overcome the silos and turf-wars present in data conversations, while aligning the system's research to the state's policy needs.

In 2019, legislators mandated the creation of a SLDS and a working group to determine how the system would be governed. In 2021 California codified the governing structure into law and enshrined the system's mission, a commitment to community participation and membership, and initial tools and resources to support Californians.

Legislators in Virginia mandated a working group to make recommendations to improve the SLDS for the purpose of advancing data-informed decision making by policy makers in the Commonwealth through the maintenance of datasets and the creation of public-facing dashboards regarding education, labor, and the workforce.

Different approaches require different timeframes.



The Opportunities in New Mexico

- **Leverage best practices from other states** to strengthen New Mexico's approach to cross-agency data governance.
- **Align the SLDS with the state's top priorities**, whether it's workforce readiness, college access, or improving K-12 outcomes.
- **Prepare the state to embrace emerging technologies** like AI for more advanced data insights and decision-making.
- **Center data privacy and security**
- **Collaborate with neighboring states** to track and understand trends for education and work, improving regional strategies.

Implementing cross-agency data governance in New Mexico will lay the groundwork for achieving these goals and help make decisions resilient to shifts in leadership and policy priorities.

Thank you!

Paige Kowalski
Executive Vice President
pkowalski@dataqualitycampaign.org