



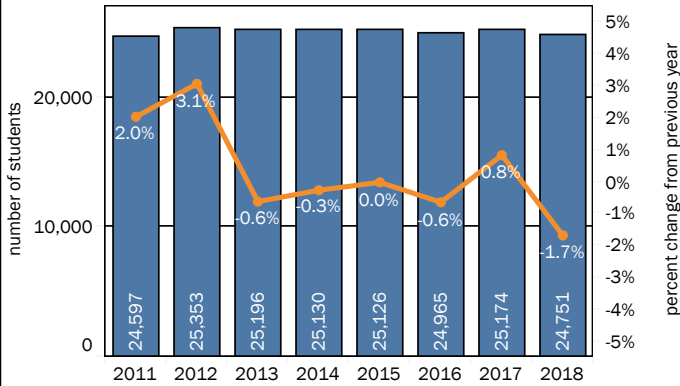
Legislative Education Study Committee
 School District Fact Sheet
Las Cruces Public Schools
 Prepared by Tim Bedeaux

Dr. Greg Ewing
 Superintendent
 575-527-5807
 gewing@lcps.net

Gabe Jacquez
 Deputy Superintendent
 for Operations &
 Leadership
 575-527-5981
 gjacquez@lcps.net

Ed Ellison
 Chief Financial Officer
 575-527-5933
 eellison@lcps.net

Enrollment History with Annual Percent Change



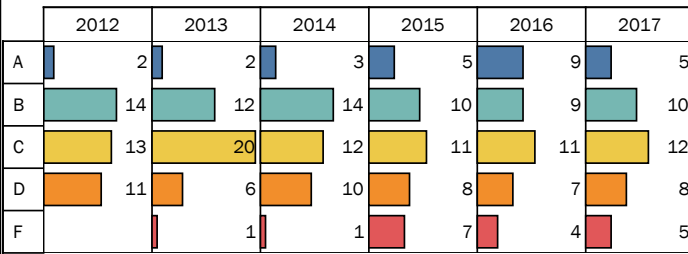
Source: PED

Student Demographics (2017)

	LCPS		State	
	Students	Percent	Students	Percent
Hispanic	18,618	75.4%	204,239	61.2%
Caucasian	4,884	19.8%	81,191	24.3%
African Amer.	640	2.6%	7,504	2.3%
Asian	230	0.9%	4,413	1.3%
Native Amer.	213	0.9%	35,472	10.6%
Pacific	111	0.5%	628	0.2%
Multi Race	3	0.0%	16	0.0%
EL	2,833	11.5%	45,399	13.6%
FRL	18,490	74.9%	244,186	73.2%
Gifted	1,520	6.2%	16,273	4.9%
Homeless	488	2.0%	7,786	2.3%
Migrant	217	0.9%	1,535	0.5%
Special Educ.	3,747	15.2%	50,963	15.3%
Title I	14,717	59.6%	247,788	74.3%

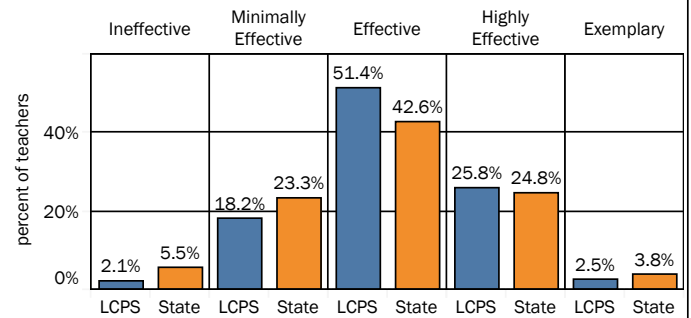
Source: PED

School Grades Summary



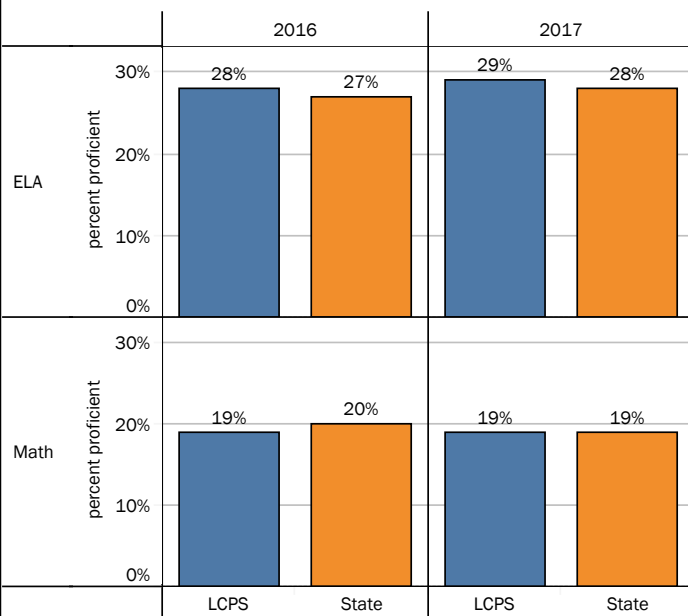
Source: PED

NMTEACH Teacher Effectiveness Ratings (2016)



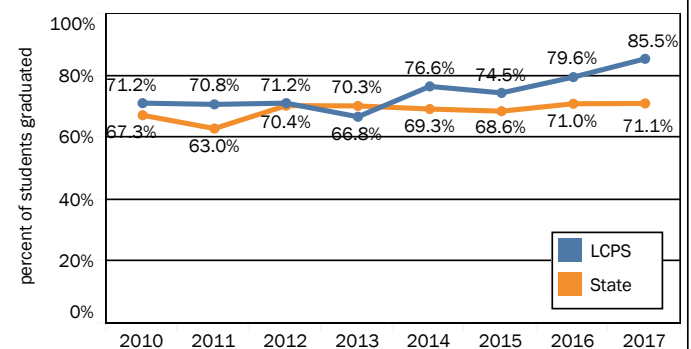
Source: PED

Students Proficient at Levels 4 and 5 on PARCC



Source: PED

Four-Year Cohort Graduation Rate



Source: PED

FY17 Operational Expenditures and FY18 Operational Budget

		2017				2018			
		LCPS		State		LCPS		State	
		Expenditures	Percent of Total	Expenditures	Percent of Total	Budget	Percent of Total	Budget	Percent of Total
Instruction	Total	\$113,514,968	63.9%	\$1,602,866,550	61.5%	\$116,640,765	61.3%	\$1,664,566,081	60.1%
Support Services	Students	\$16,293,649	9.2%	\$255,482,353	9.8%	\$17,165,926	9.0%	\$268,793,903	9.7%
	Instruction	\$5,912,865	3.3%	\$66,673,736	2.6%	\$6,205,288	3.3%	\$70,038,417	2.5%
	General Admin.	\$1,341,953	0.8%	\$55,737,026	2.1%	\$1,437,659	0.8%	\$68,253,631	2.5%
	School Admin.	\$11,411,549	6.4%	\$174,228,729	6.7%	\$11,303,039	5.9%	\$163,362,105	5.9%
	Central Services	\$5,180,226	2.9%	\$92,623,785	3.6%	\$5,556,074	2.9%	\$100,085,411	3.6%
	Maint. and Oper.	\$21,551,463	12.1%	\$339,903,520	13.0%	\$21,590,692	11.3%	\$364,111,833	13.2%
	Student Transp.	\$2,250,836	1.3%	\$10,948,283	0.4%	\$1,773,510	0.9%	\$7,560,304	0.3%
	Other	\$0	0.0%	\$1,551,113	0.1%	\$8,502,896	4.5%	\$41,728,122	1.5%
	Total	\$63,942,542	36.0%	\$997,148,545	38.2%	\$73,535,084	38.7%	\$1,083,933,726	39.2%
Non-Instructional Services	Food Service	\$2,157	0.0%	\$2,411,215	0.1%	\$0	0.0%	\$2,852,857	0.1%
	Community Svc.	\$53,987	0.0%	\$1,046,353	0.0%	\$63,200	0.0%	\$1,057,857	0.0%
	Total	\$56,143	0.0%	\$3,457,568	0.1%	\$63,200	0.0%	\$3,910,714	0.1%
Capital Outlay	Total	\$128,907	0.1%	\$4,423,880	0.2%	\$0	0.0%	\$15,456,215	0.6%
Grand Total		\$177,642,560	100.0%	\$2,607,896,543	100.0%	\$190,239,049	100.0%	\$2,767,866,736	100.0%

Source: OBMS

Condition and Maintenance of Facilities

School	wNMCI	FMAR						
	2017	2011	2012	2013	2014	2015	2016	2017
Alameda Elementary	12.5%			81.5%		67.1%		
Arrowhead Park Early Colle..	10.1%							
Arrowhead Park Medical Ac..	0.0%							
Booker T. Washington	22.2%			74.1%				
Camino Real Middle	25.5%	74.6%						
Centennial High School	8.3%						71.1%	
Central Elementary	15.2%			74.7%			56.1%	70.8%
Cesar Chavez Elementary	14.8%			67.3%				
Columbia Elementary	6.3%			71.2%	60.3%			
Conlee Elementary	10.9%			66.7%				
Desert Hills Elementary	30.7%			71.4%			67.2%	
Doña Ana Elementary	15.3%			72.0%				79.8%
East Picacho Elementary	17.0%			77.8%				74.4%
Fairacres Elementary	23.8%			73.3%		58.5%		
Hermosa Hgts Elementary	14.4%			79.3%				
Highland Elementary	17.0%			70.3%				
Hillrise Elementary	19.7%			76.4%				
Jornada Elementary	22.7%			76.8%				
La Academia Dolores Huerta							68.8%	
Las Cruces High	0.0%	86.2%					66.5%	
Loma Heights Elementary	0.0%							
Lynn Middle	18.4%			75.9%				
MacArthur Elementary	29.7%			72.6%		71.4%		
Mayfield High	6.5%	76.4%			50.2%			
Mesa Middle	7.7%			81.7%				
Mesilla Elementary	15.1%	71.7%				73.1%		84.2%
Mesilla Park Elementary	23.5%			78.8%				
Mesilla Valley Alternative	0.0%							56.0%
Mesilla Valley Training Cent..			18.6%					66.7%
Monte Vista Elementary	3.3%			80.7%	75.4%			
Onate High	19.7%			54.3%				
Picacho Middle	23.2%			68.1%				
Rio Grande Preparatory Inst..	19.4%			74.2%				
Sierra Middle	5.9%			49.7%				
Sonoma Elementary	6.4%	78.7%						
Sunrise Elementary	24.3%			78.5%			62.4%	
Tombaugh Elementary	13.2%			75.2%				
University Hills Elementary	7.7%			80.4%		65.8%		
Valley View Elementary	14.2%			79.1%				
Vista Middle	18.8%			65.9%				
White Sands Middle				68.3%		71.9%		
White Sands School	17.9%							
Zia Middle	14.8%			68.1%				

FMAR of 70 percent or higher is considered satisfactory.

Source: PSFA

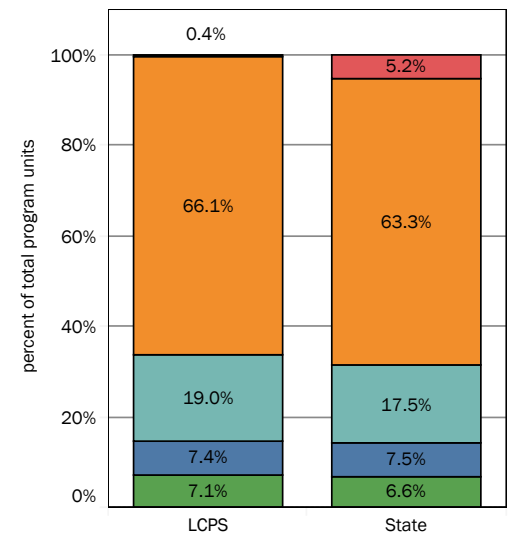
2016 Land Valuation and Bonding

	LCPS
Total Valuation	\$3,220,511,662
Bonds Outstanding	\$117,840,000
Bonding Capacity	\$193,230,700

Prekindergarten Programs

No PED-funded prekindergarten programs.

Percent of FY18 Funding by Unit Type



Program Unit Type (group)

- Size and Growth
- Basic MEM
- Special Education
- All Other
- Training and Experience

"All Other" category includes at-risk, bilingual, elementary PE, National Board-certified teachers, charter school activities, home school program and activities, and save harmless units.