

0 9 18 27 36 Miles

RESEARCH & POLLING INC.

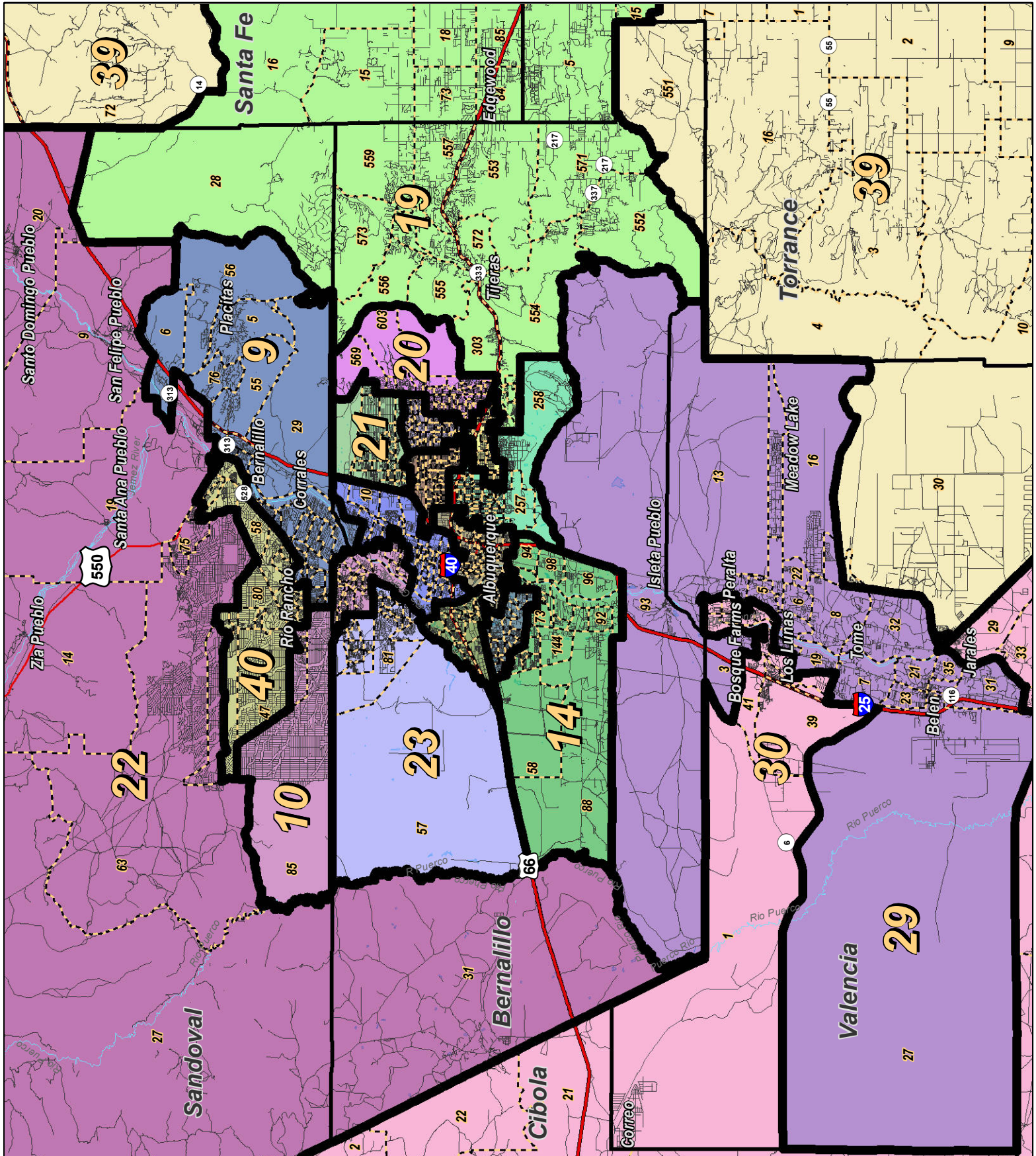
For the New Mexico Legislative Council Service



LEGEND Created: January 31, 2012

- Precincts (dashed line)
- Counties (thick black line)
- Rivers (blue wavy line)
- Lakes / Ponds (blue irregular shape)
- Interstate (red double line)
- US Highway (red single line)
- State Highway (black single line)

Research & Polling, Inc. distributes this map assuming no liability for any errors, omissions, or inaccuracies in the information provided regardless of the cause in reliance upon any maps.



0 3 6 9 12 Miles

RESEARCH & POLLING INC.

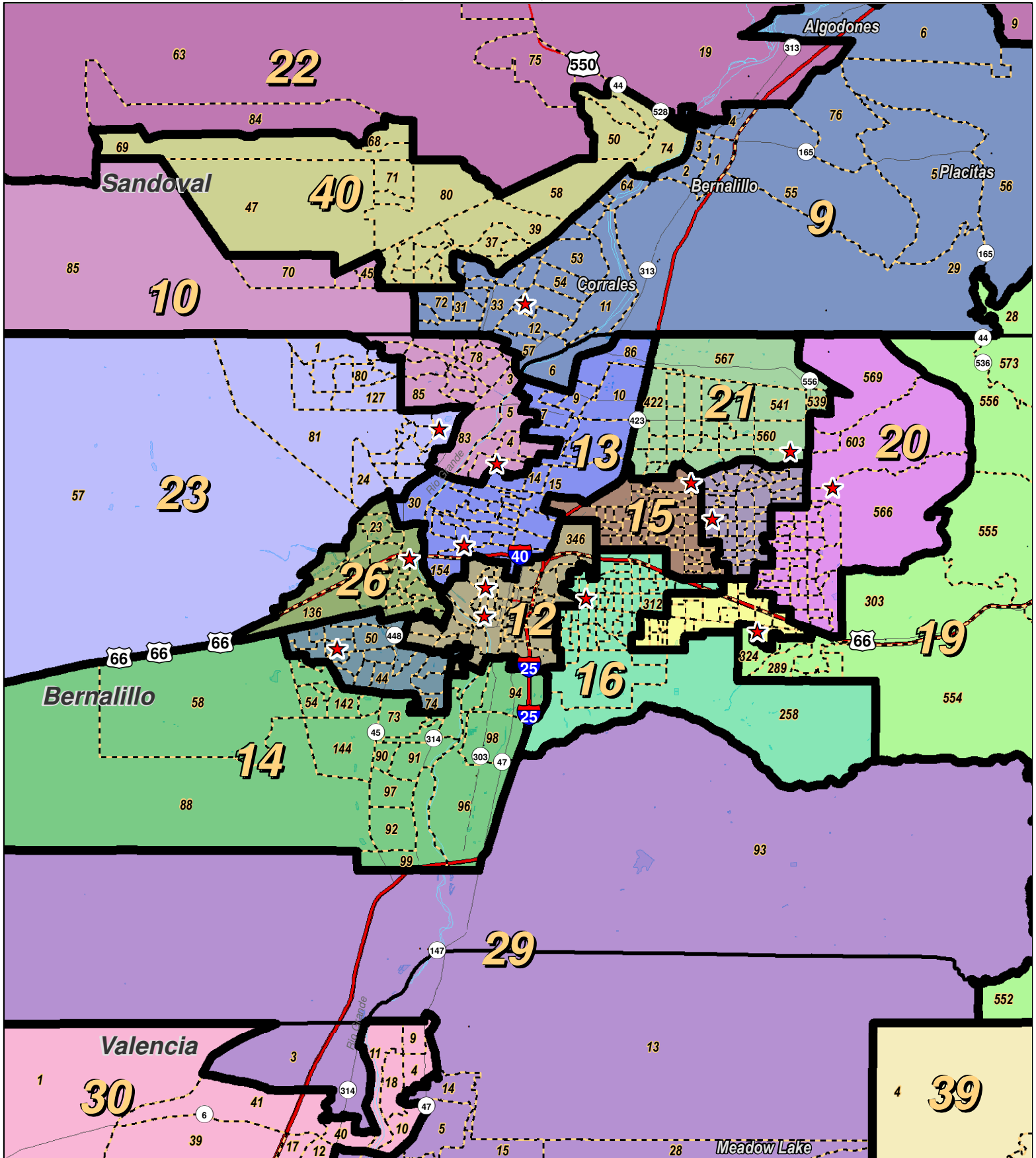
For the New Mexico Legislative Council Service



LEGEND Created: January 30, 2012

Precincts	Rivers	Interstate
Counties	Lakes / Ponds	US Highway
		State Highway

Research & Polling, Inc. distributes this map assuming no liability for any errors, omissions, or inaccuracies in the information provided regardless of the cause in reliance upon any maps.



0 1 2 3 4 Miles

RESEARCH & POLLING INC.

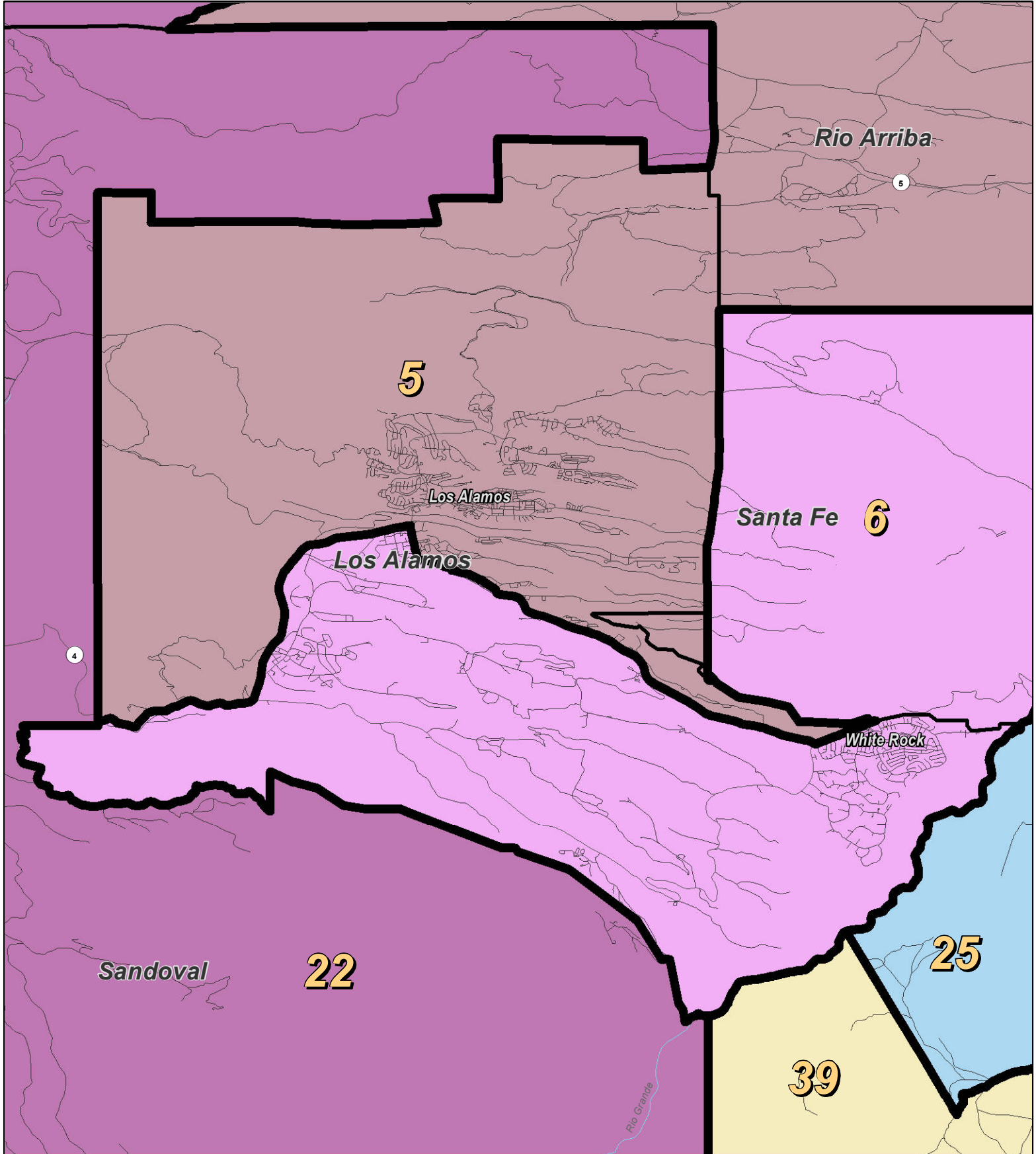
For the New Mexico Legislative Council Service



LEGEND Created: January 18, 2012

- ★ Legislators
- ▭ Precincts
- ▭ Counties
- ~ Rivers
- ~ Lakes / Ponds
- ↔ Interstate
- ↔ US Highway
- ↔ State Highway

Research & Polling, Inc. distributes this map assuming no liability for any errors, omissions, or inaccuracies in the information provided regardless of the cause in reliance upon any maps.



RESEARCH & POLLING INC.

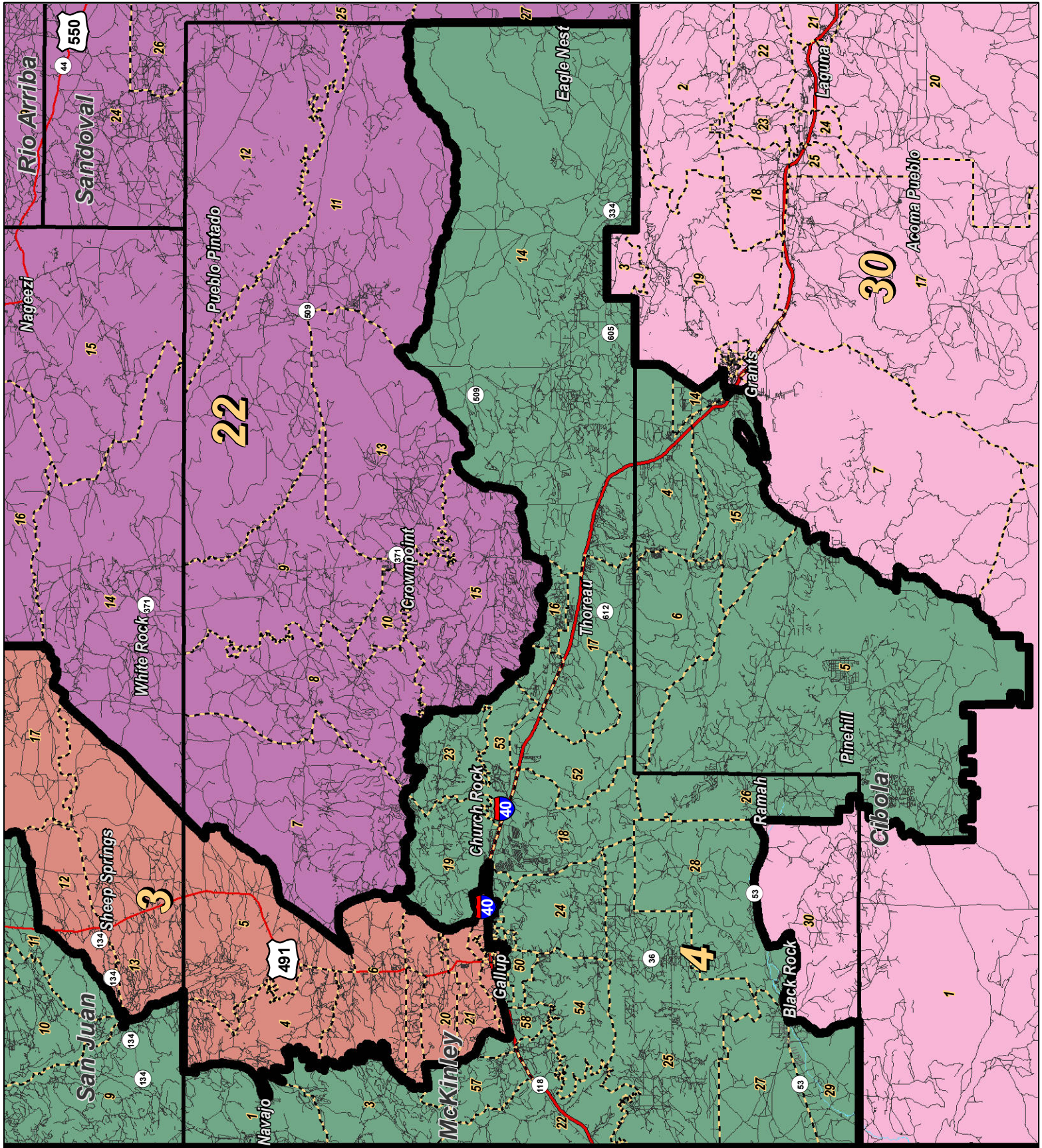
For the New Mexico Legislative Council Service



LEGEND Created: January 30, 2012

Counties	Rivers	Interstate
	Lakes / Ponds	US Highway
		State Highway

Research & Polling, Inc. distributes this map assuming no liability for any errors, omissions, or inaccuracies in the information provided regardless of the cause in reliance upon any maps.



0 6 12 18 24 Miles

NEW MEXICO

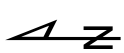
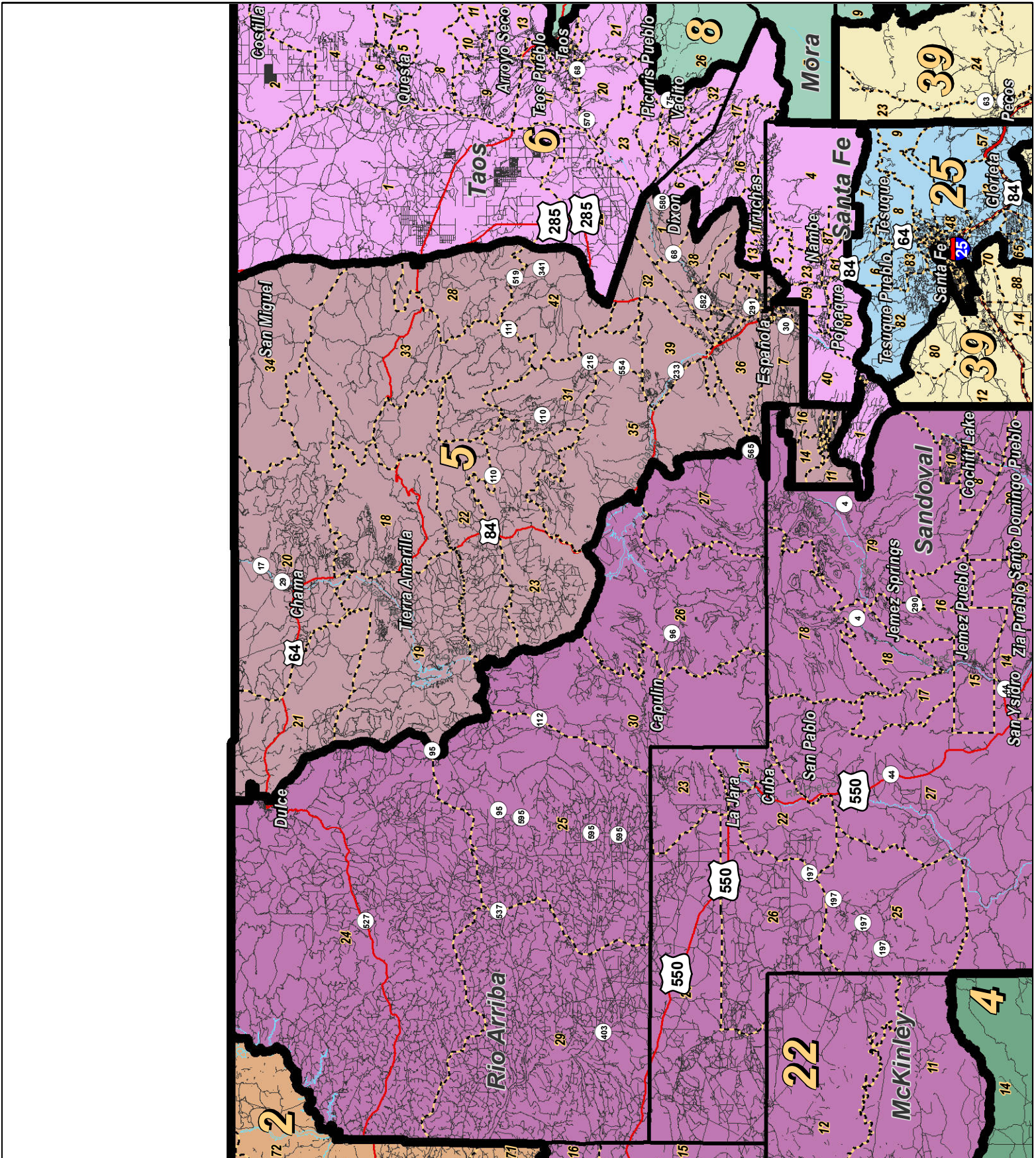
LEGEND Created: January 30, 2012

Precincts	Rivers	Interstate
Counties	Lakes / Ponds	US Highway
		State Highway

Research & Polling, Inc. distributes this map assuming no liability for any errors, omissions, or inaccuracies in the information provided regardless of the cause in reliance upon any maps.



For the New Mexico Legislative Council Service



LEGEND

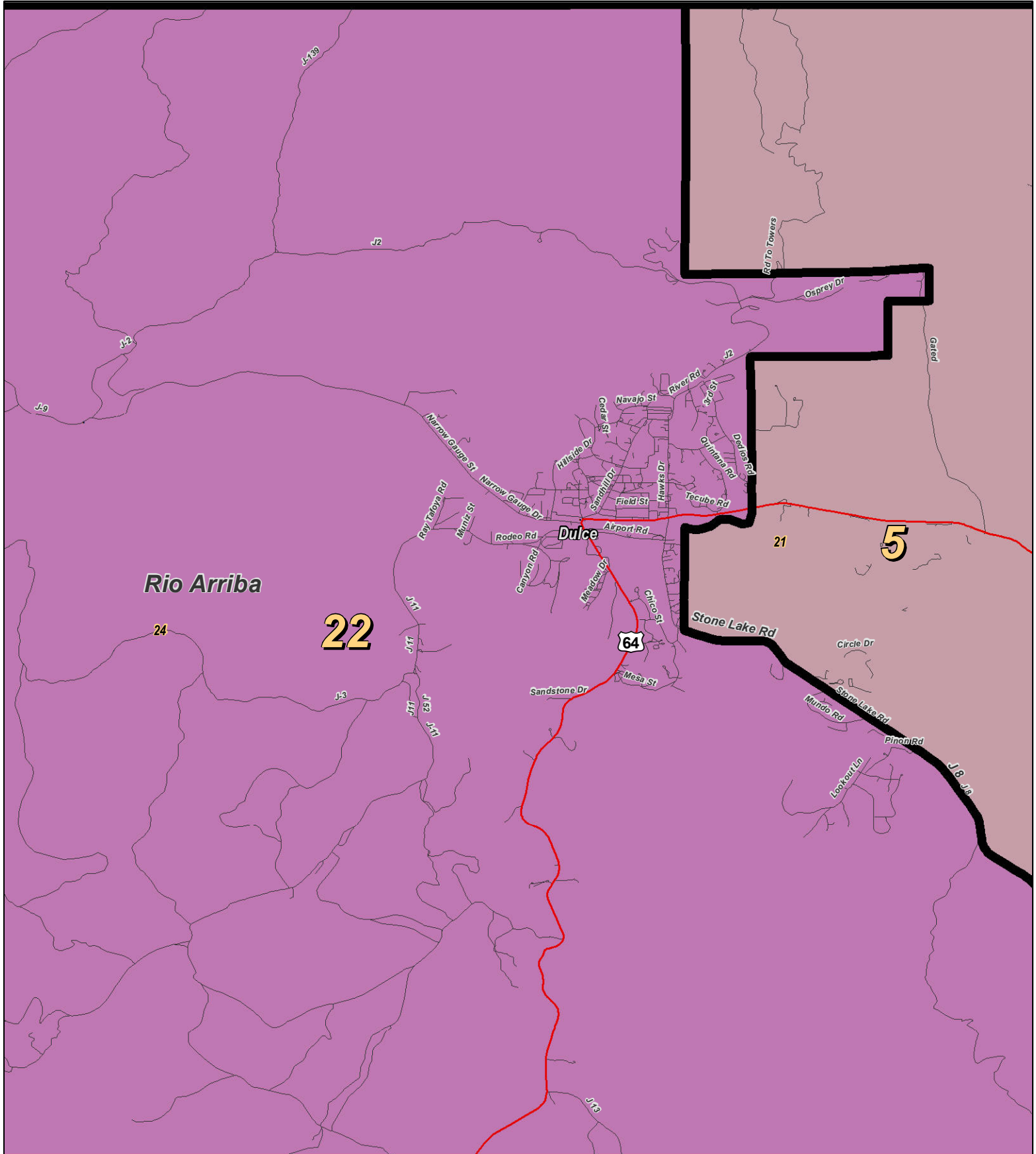
Created: January 30, 2012

- Precincts
- Rivers
- Counties
- Lakes / Ponds
- Interstate
- US Highway
- State Highway



For the New Mexico Legislative Council Service

Research & Polling, Inc. distributes this map assuming no liability for any errors, omissions, or inaccuracies in the information provided regardless of the cause in reliance upon any maps.



0 1 Miles

RESEARCH & POLLING INC.

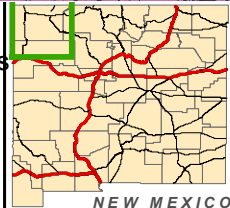
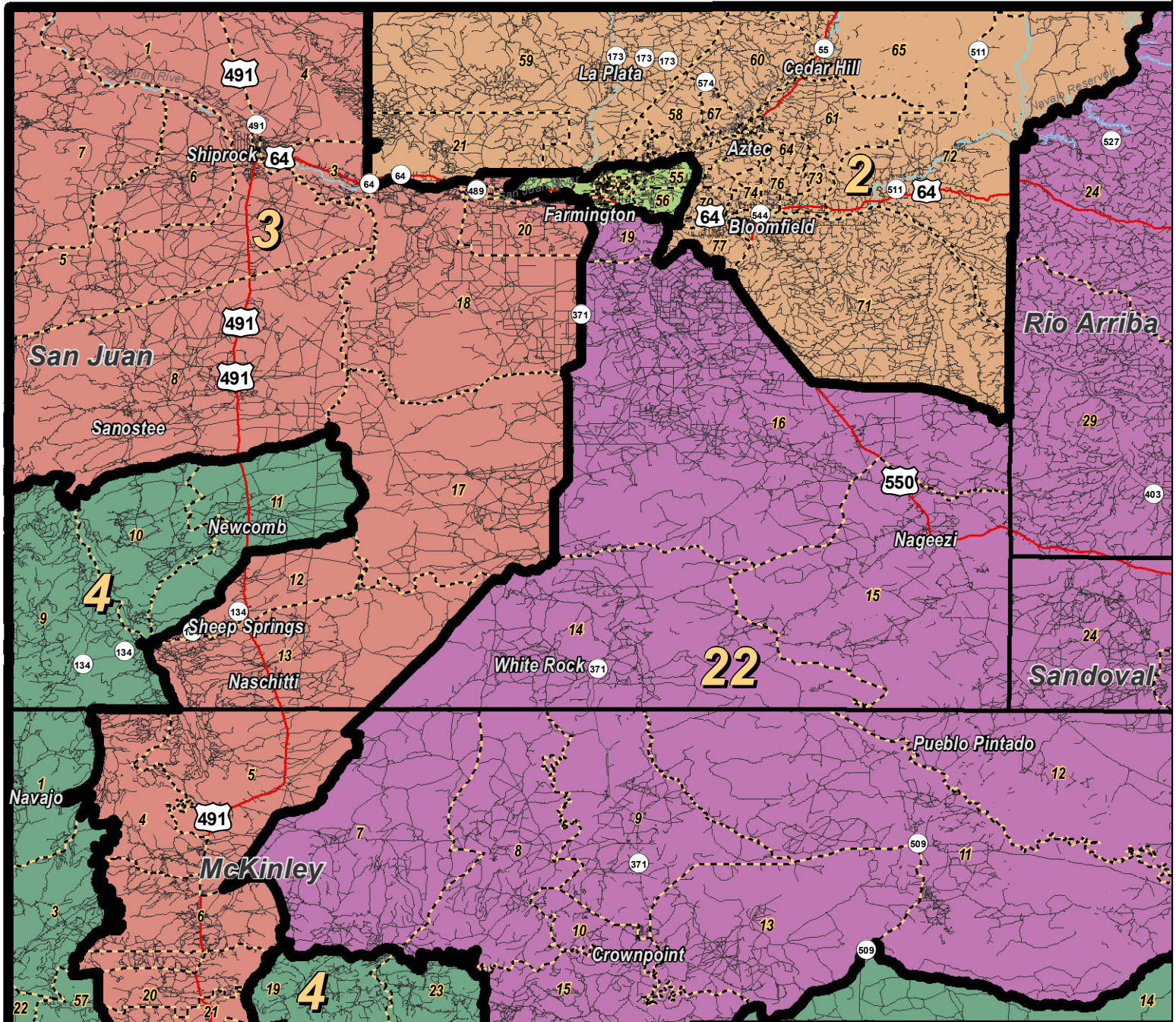
For the New Mexico Legislative Council Service



LEGEND Created: January 23, 2012

★ Legislators	~ Rivers	⚡ Interstate
▭ Precincts	☪ Lakes / Ponds	⚡ US Highway
▭ Counties		~ State Highway

Research & Polling, Inc. distributes this map assuming no liability for any errors, omissions, or inaccuracies in the information provided regardless of the cause in reliance upon any maps.



LEGEND

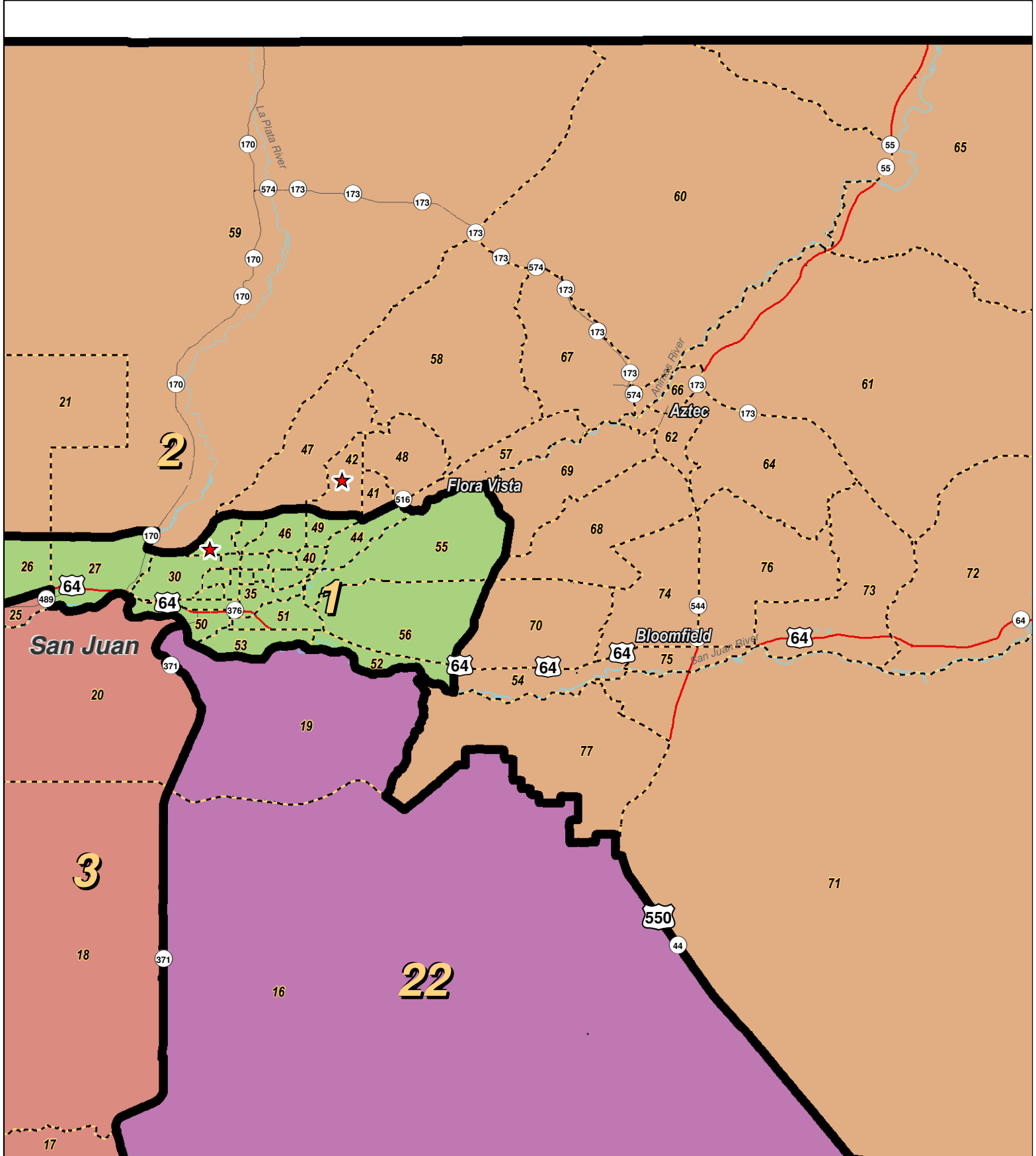
Created: January 30, 2012

- Precincts
- Rivers
- Interstate
- Counties
- Lakes / Ponds
- US Highway
- State Highway

Research & Polling, Inc. distributes this map assuming no liability for any errors, omissions, or inaccuracies in the information provided regardless of the cause in reliance upon any maps.



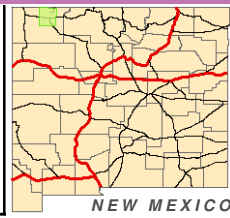
For the New Mexico Legislative Council Service



0 1 2 3 4
Miles

RESEARCH & POLLING INC.

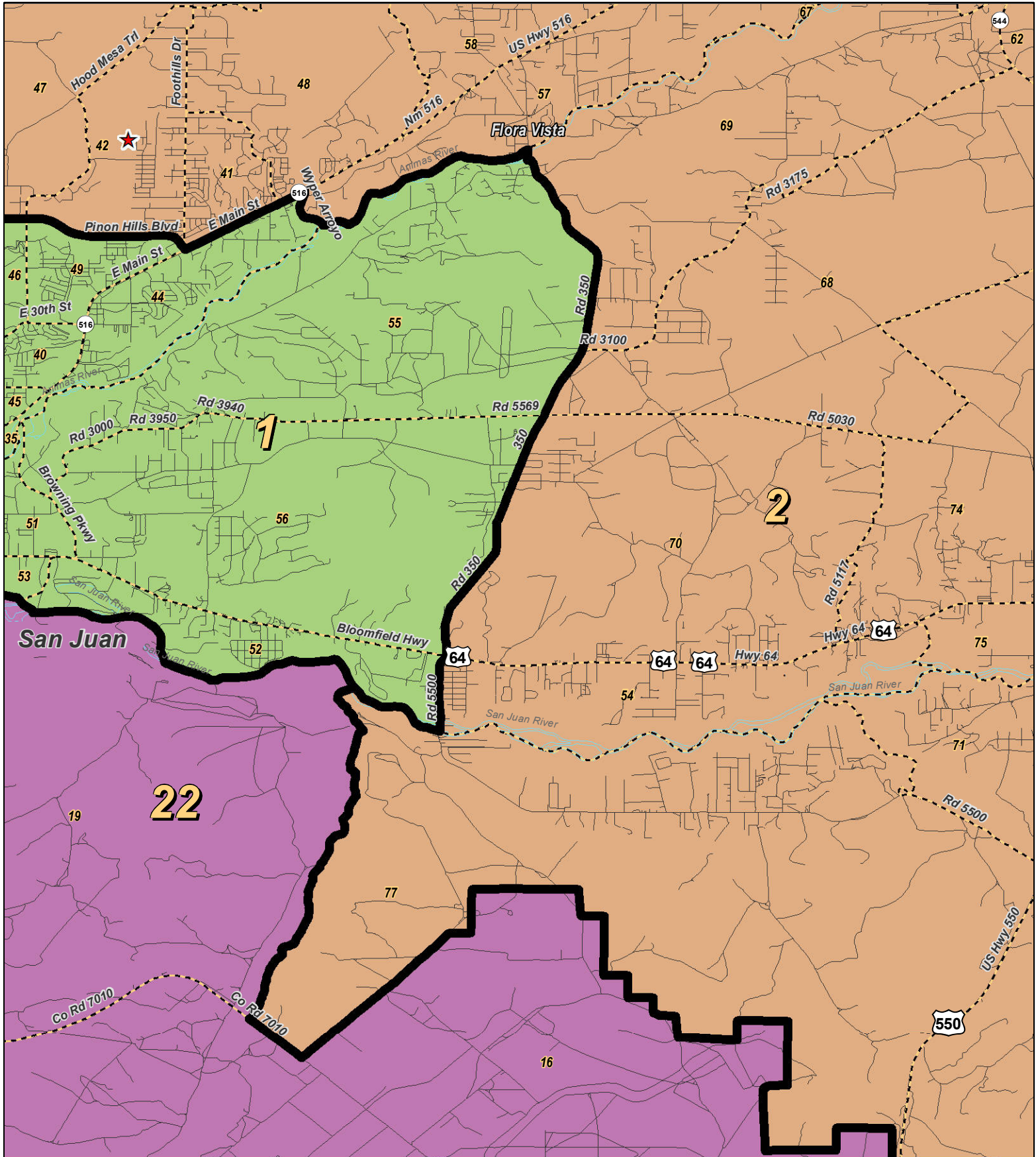
For the New Mexico Legislative Council Service



LEGEND Created: January 18, 2012

- ★ Legislators
- Precincts
- Counties
- ~ Rivers
- ~ Lakes / Ponds
- Interstate
- US Highway
- State Highway

Research & Polling, Inc. distributes this map assuming no liability for any errors, omissions, or inaccuracies in the information provided regardless of the cause in reliance upon any maps.



0 1 2 Miles

RESEARCH & POLLING INC.

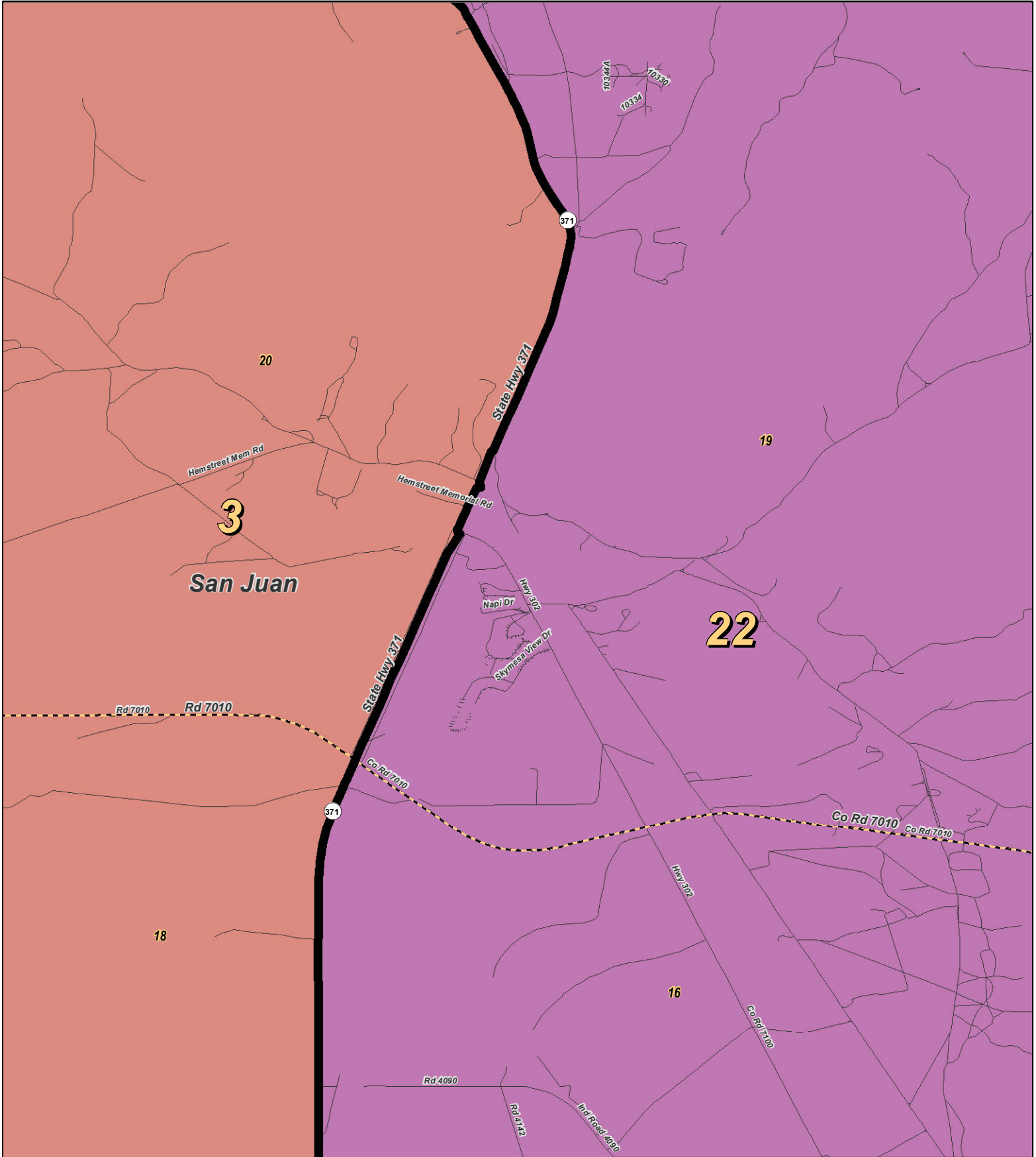
For the New Mexico Legislative Council Service



LEGEND Created: January 23, 2012

★ Legislators	~ Rivers	↔ Interstate
▭ Precincts	☪ Lakes / Ponds	↔ US Highway
▭ Counties		~ State Highway

Research & Polling, Inc. distributes this map assuming no liability for any errors, omissions, or inaccuracies in the information provided regardless of the cause in reliance upon any maps.



RESEARCH & POLLING
INC.

For the New Mexico
Legislative Council Service

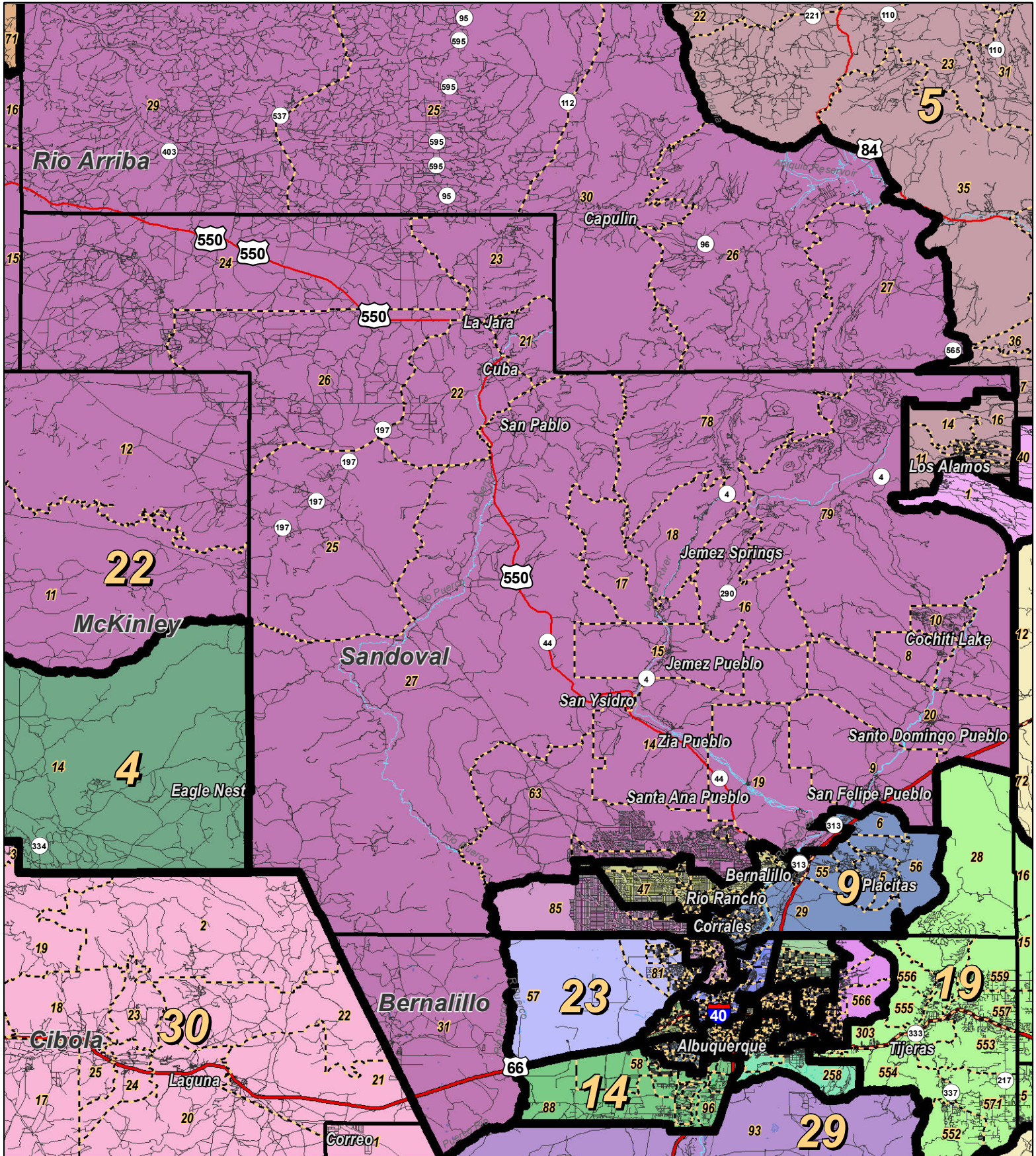
0 1 Miles



LEGEND Created: January 23, 2012

★ Legislators	~ Rivers	⚡ Interstate
▭ Precincts	☪ Lakes / Ponds	⚡ US Highway
▭ Counties		~ State Highway

Research & Polling, Inc. distributes this map assuming no liability for any errors, omissions, or inaccuracies in the information provided regardless of the cause in reliance upon any maps.



0 5 10 15 20 Miles

RESEARCH & POLLING INC.

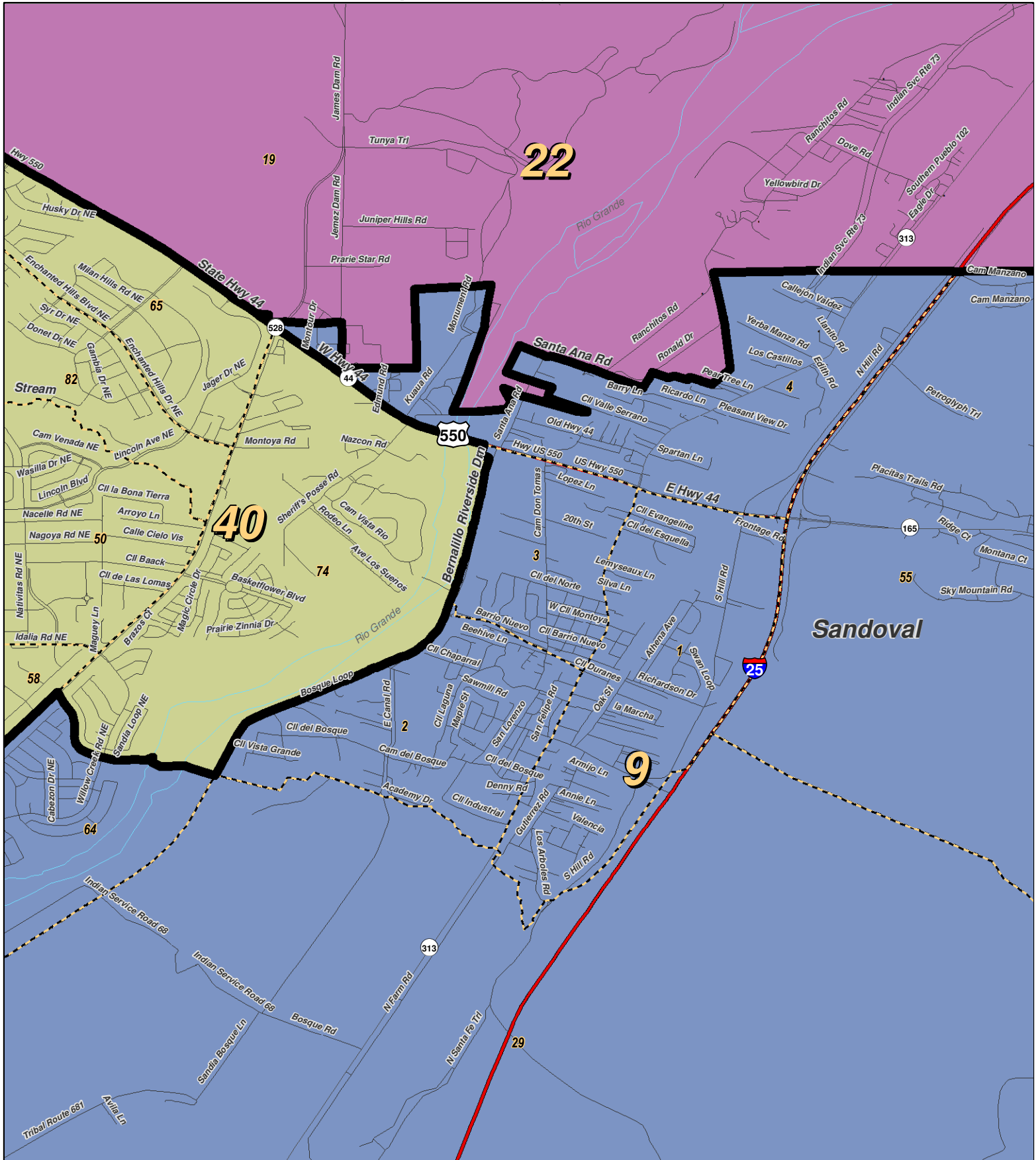
For the New Mexico Legislative Council Service



LEGEND Created: January 30, 2012

Precincts	Rivers	Interstate
Counties	Lakes / Ponds	US Highway
		State Highway

Research & Polling, Inc. distributes this map assuming no liability for any errors, omissions, or inaccuracies in the information provided regardless of the cause in reliance upon any maps.



0 1 Miles

RESEARCH & POLLING INC.

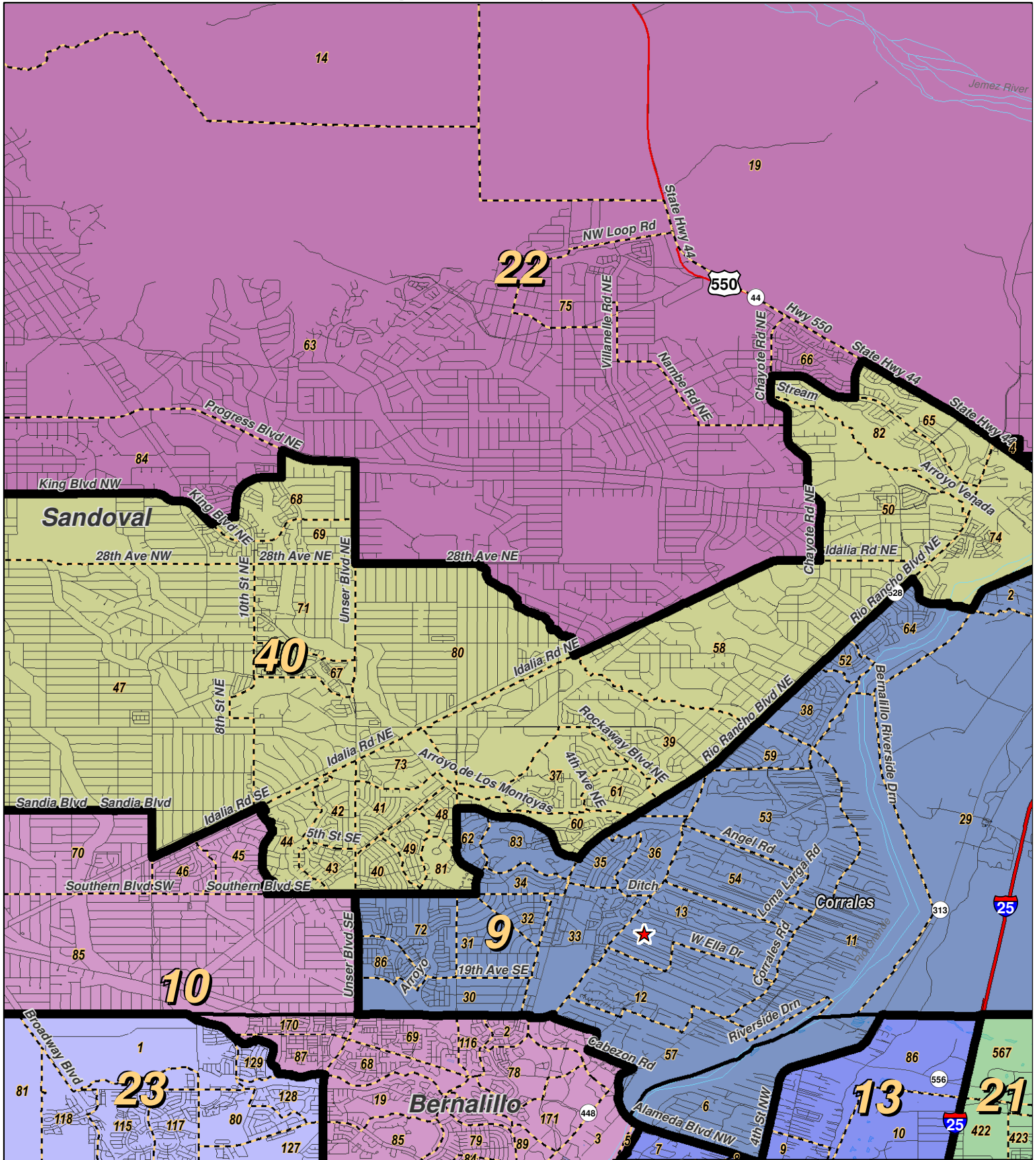
For the New Mexico Legislative Council Service



LEGEND Created: January 18, 2012

- ★ Legislators
- Precincts
- Counties
- ~ Rivers
- ~ Lakes / Ponds
- ~ Interstate
- ~ US Highway
- ~ State Highway

Research & Polling, Inc. distributes this map assuming no liability for any errors, omissions, or inaccuracies in the information provided regardless of the cause in reliance upon any maps.



0 1 2 Miles

RESEARCH & POLLING INC.

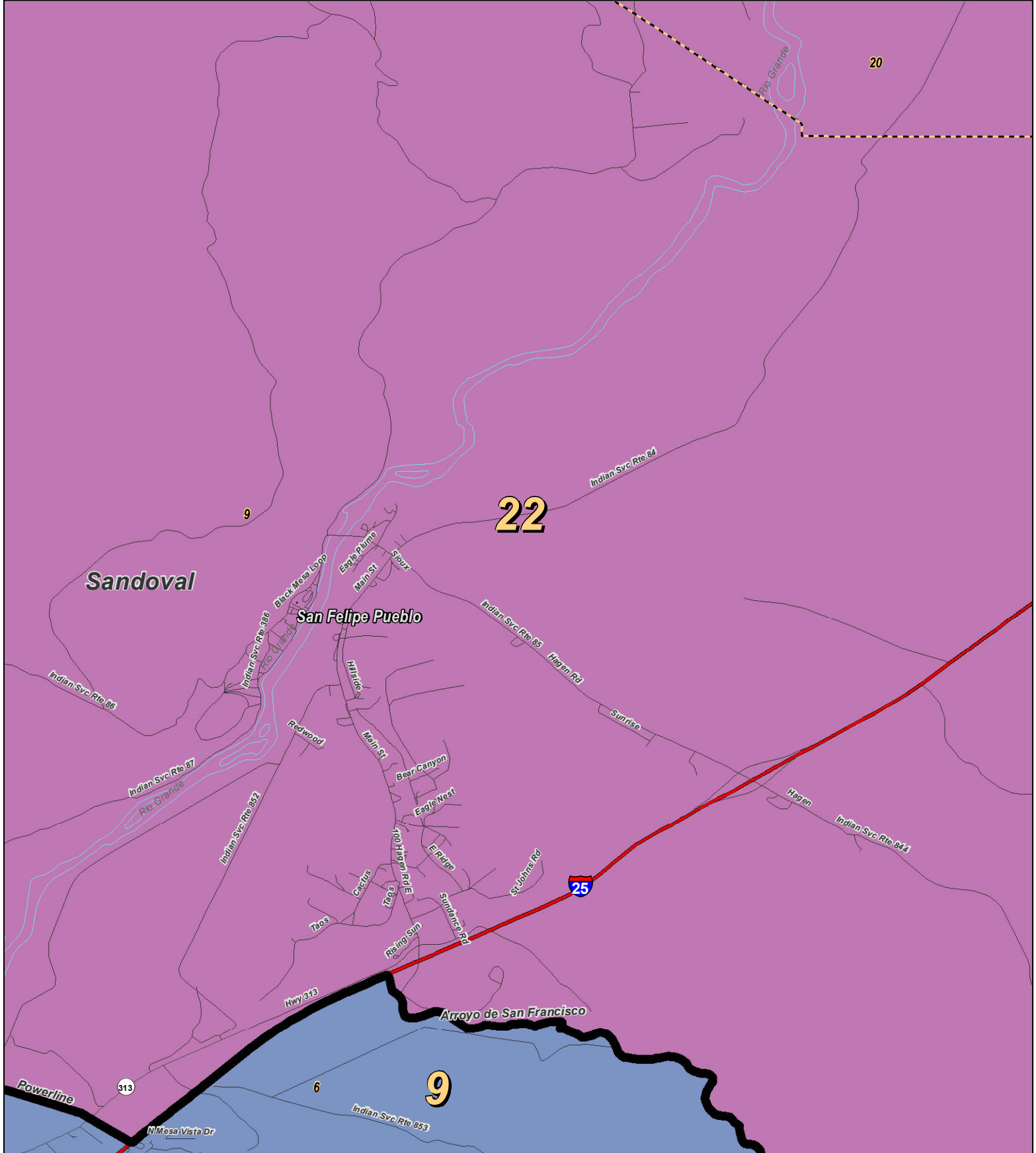
For the New Mexico Legislative Council Service



LEGEND Created: January 18, 2012

- ★ Legislators
- ▭ Precincts
- ▭ Counties
- ~ Rivers
- ~ Lakes / Ponds
- ~ Interstate
- ~ US Highway
- ~ State Highway

Research & Polling, Inc. distributes this map assuming no liability for any errors, omissions, or inaccuracies in the information provided regardless of the cause in reliance upon any maps.



RESEARCH & POLLING
INC.

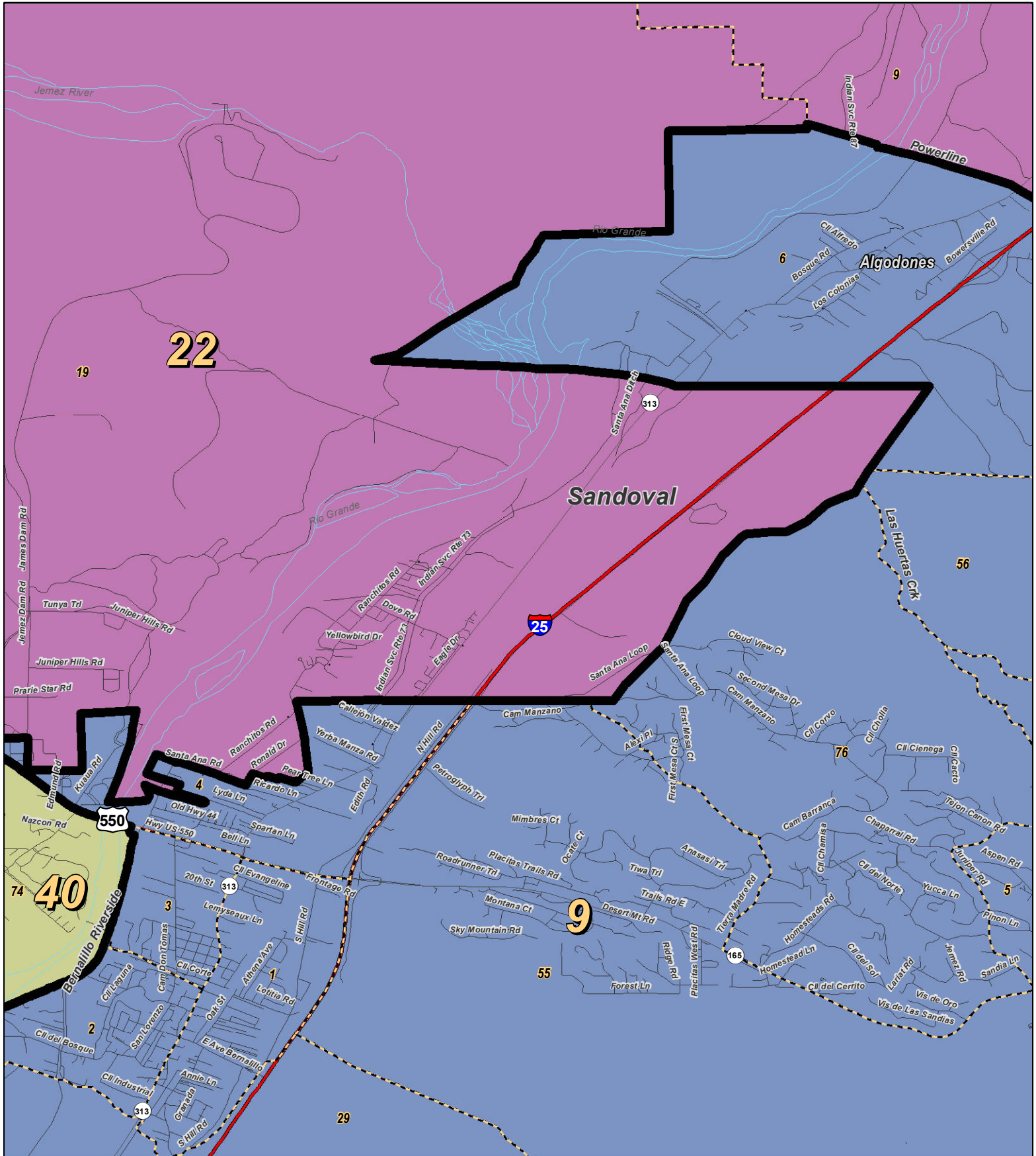
For the New Mexico
Legislative Council Service



LEGEND Created: January 23, 2012

★ Legislators	~ Rivers	⚡ Interstate
▭ Precincts	☪ Lakes / Ponds	⚡ US Highway
▭ Counties		~ State Highway

Research & Polling, Inc. distributes this map assuming no liability for any errors, omissions, or inaccuracies in the information provided regardless of the cause in reliance upon any maps.



0 1 Miles

RESEARCH & POLLING INC.

For the New Mexico Legislative Council Service



LEGEND Created: January 23, 2012

★ Legislators	~ Rivers	~ Interstate
□ Precincts	~ Lakes / Ponds	~ US Highway
▭ Counties		~ State Highway

Research & Polling, Inc. distributes this map assuming no liability for any errors, omissions, or inaccuracies in the information provided regardless of the cause in reliance upon any maps.

**NM Senate
Plaintiffs, Intervenors, and Executive Defendants Joint
(Court Adopted January 2012)**

**2010 Census
Redistricting**

District: 22

				Adult Non-Hispanic		
County/ Precinct	Total Population	Adult Hispanic	Total Adult Native American	White	Native American	Black
BE 31	1,555	3.1%	95.8%	1.6%	93.3%	0.8%
MC 7	1,154	1.1%	99.3%	0.1%	97.7%	0.5%
MC 8	737	1.1%	98.1%	1.1%	96.7%	0.2%
MC 9	1,931	1.1%	95.8%	3.4%	94.6%	0.1%
MC 10	1,276	0.8%	90.9%	6.7%	90.2%	0.9%
MC 11	406	2.0%	98.3%	0.3%	97.6%	0.0%
MC 12	1,248	1.8%	94.7%	4.0%	92.7%	0.1%
MC 13	866	0.2%	98.6%	0.9%	97.8%	0.3%
MC 15	2,325	1.1%	98.3%	0.8%	97.5%	0.1%
RI 24	3,264	10.2%	90.1%	5.3%	83.0%	0.4%
RI 25	258	17.2%	3.3%	79.1%	3.3%	0.0%
RI 26	446	82.3%	6.2%	14.4%	2.0%	0.0%
RI 27	151	90.5%	0.8%	8.7%	0.8%	0.0%
RI 29	217	10.8%	74.7%	13.9%	71.5%	0.0%
RI 30	455	87.4%	0.9%	11.4%	0.0%	0.0%
SJ 14	494	1.6%	94.2%	2.7%	93.7%	0.0%
SJ 15	1,016	1.9%	98.8%	0.9%	96.2%	0.0%
SJ 16	1,904	2.8%	97.3%	1.7%	94.4%	0.1%
SJ 19	792	2.0%	97.8%	1.8%	95.7%	0.0%
SD 7	712	74.1%	12.7%	14.3%	9.9%	1.1%
SD 8	735	11.0%	89.7%	1.4%	86.0%	0.0%
SD 9	2,767	1.5%	97.9%	1.4%	96.8%	0.0%
SD 10	574	13.2%	21.3%	65.7%	16.3%	1.0%
SD 14	741	1.2%	99.0%	0.6%	97.8%	0.0%
SD 15	1,815	1.2%	98.9%	0.2%	98.5%	0.1%
SD 16	387	54.5%	8.6%	37.9%	7.3%	0.0%
SD 17	396	44.6%	11.3%	43.7%	10.1%	0.0%
SD 18	579	18.1%	2.9%	77.9%	1.3%	0.6%
SD 19	618	4.3%	96.4%	0.0%	94.5%	0.0%
SD 20	3,323	3.1%	96.7%	1.0%	95.8%	0.0%
SD 21	580	61.9%	9.6%	29.2%	6.9%	0.2%
SD 22	728	43.5%	20.9%	36.6%	18.3%	0.8%

District: 22

District: 22				Adult Non-Hispanic		
County/ Precinct	Total Population	Adult Hispanic	Total Adult Native American	White	Native American	Black
SD 23	447	49.3%	6.1%	42.1%	4.8%	1.3%
SD 24	734	2.4%	96.4%	1.8%	94.4%	0.2%
SD 25	1,359	1.5%	96.5%	2.3%	95.4%	0.2%
SD 26	587	2.6%	96.3%	2.9%	93.7%	0.0%
SD 27	335	61.2%	9.5%	30.0%	8.1%	0.4%
SD 63	743	32.0%	3.4%	63.4%	1.9%	0.9%
SD 66	3,625	38.0%	5.4%	50.6%	3.8%	2.9%
SD 75	926	33.0%	4.3%	57.7%	3.1%	3.1%
SD 78	351	10.5%	2.7%	85.5%	2.4%	0.0%
SD 79	308	9.9%	4.4%	83.7%	2.0%	0.0%
SD 84	2,919	33.2%	4.2%	55.2%	2.5%	5.0%
District Totals	46,784	15.5%	66.4%	17.8%	64.4%	0.8%