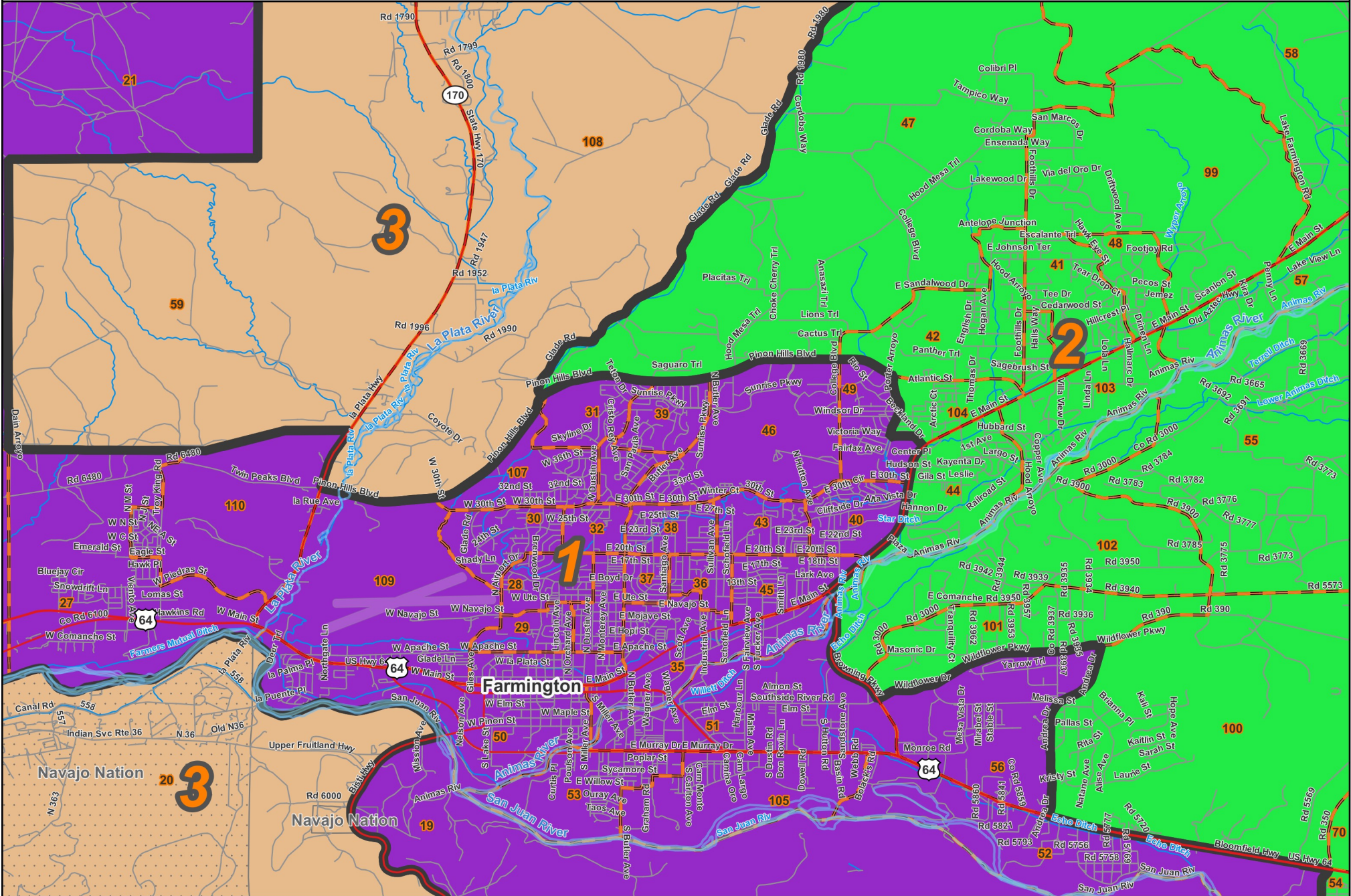
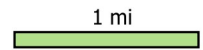


State Senate: District 3

Farmington

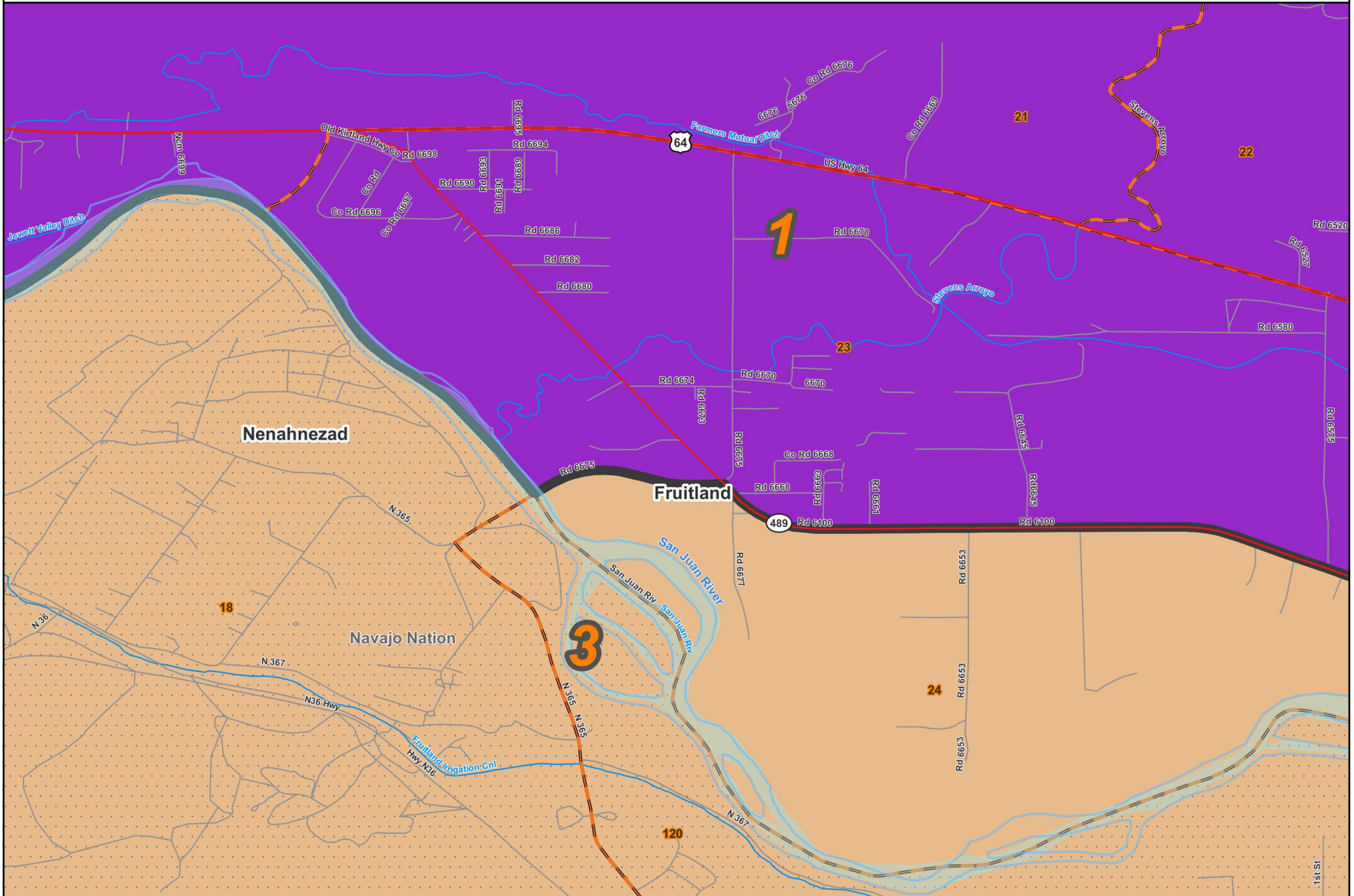


Prepared for the New Mexico Legislative Council Service



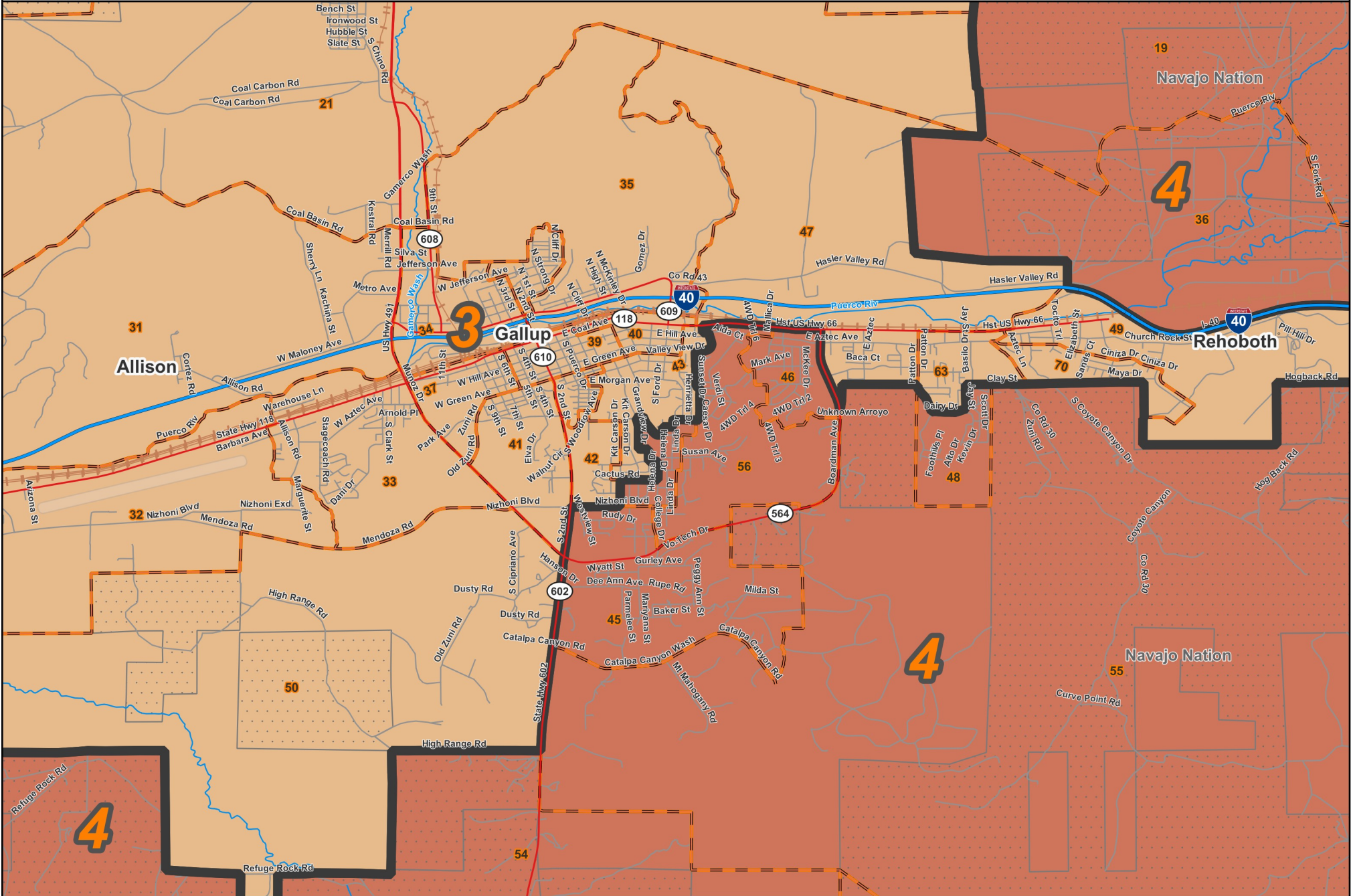
- Precincts
- Nat. Amer. lands
- Counties

06/09/2023



State Senate: District 3

Gallup

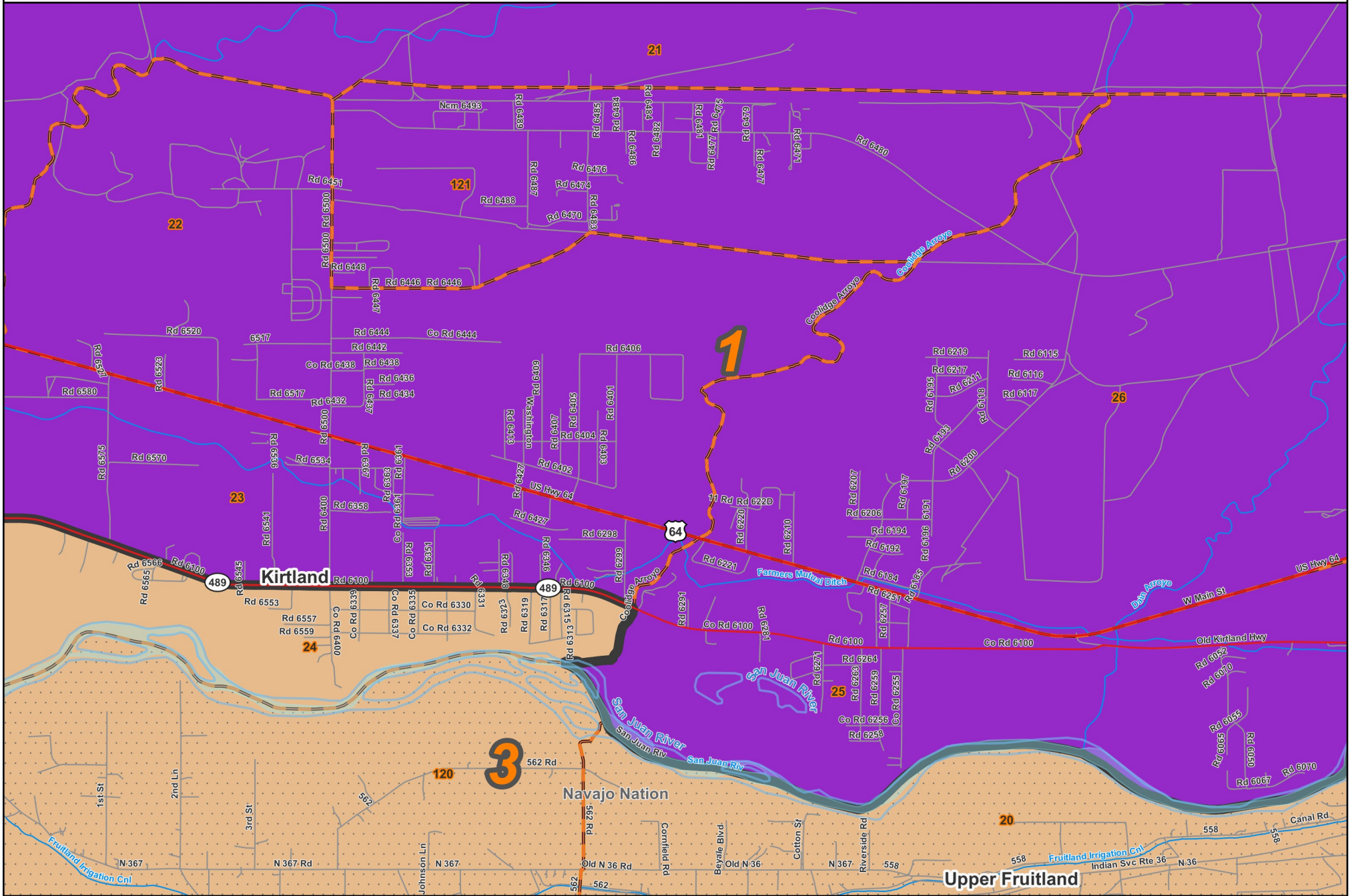


Prepared for the New Mexico Legislative Council Service



Legend:
Precincts (orange outline)
Counties (grey outline)
Nat. Amer. lands (dotted pattern)

06/09/2023



Prepared for the New Mexico Legislative Council Service

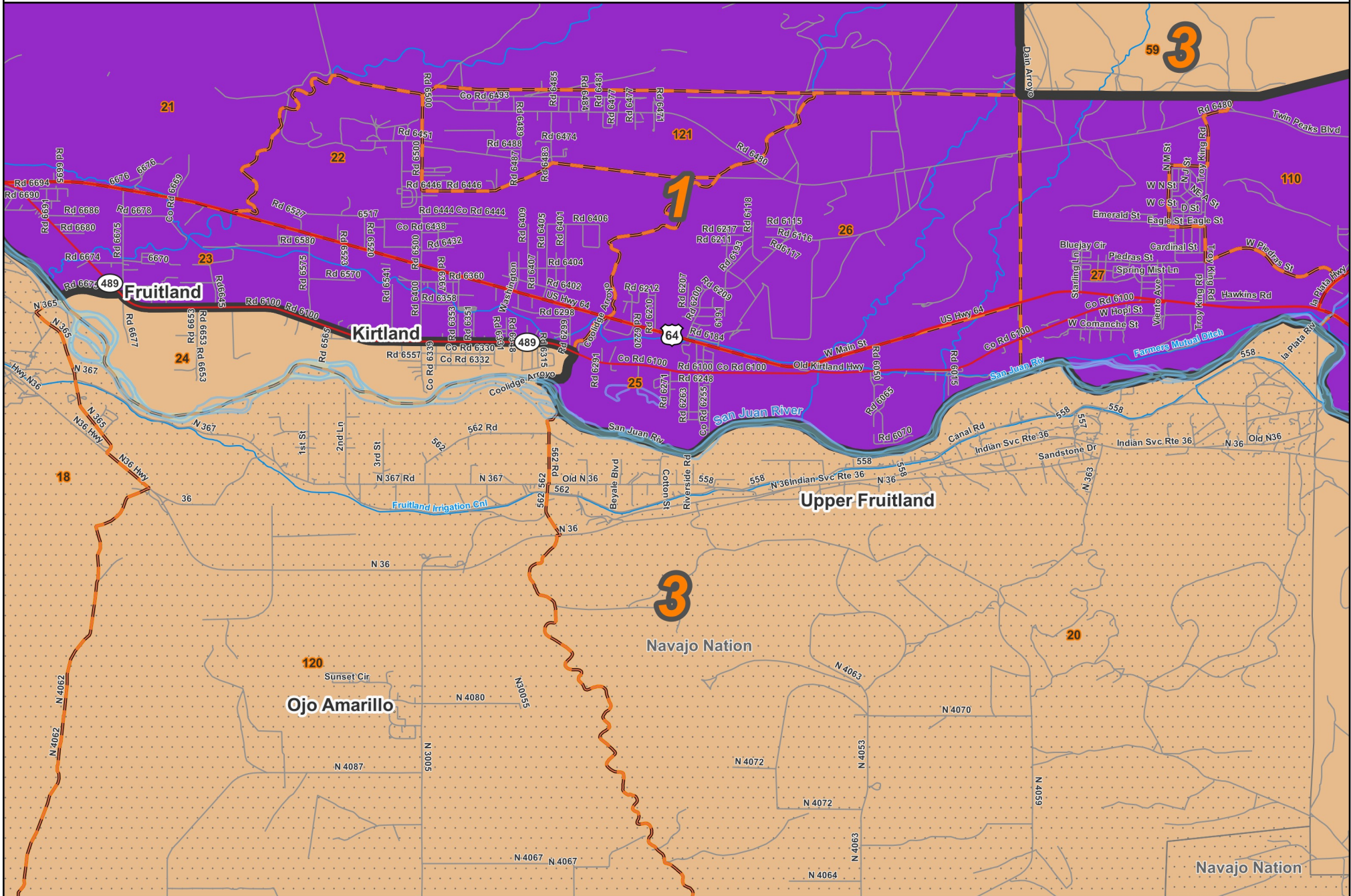


- Precincts
- Counties
- Nat. Amer. lands

06/09/2023

State Senate: District 3

Upper Fruitland



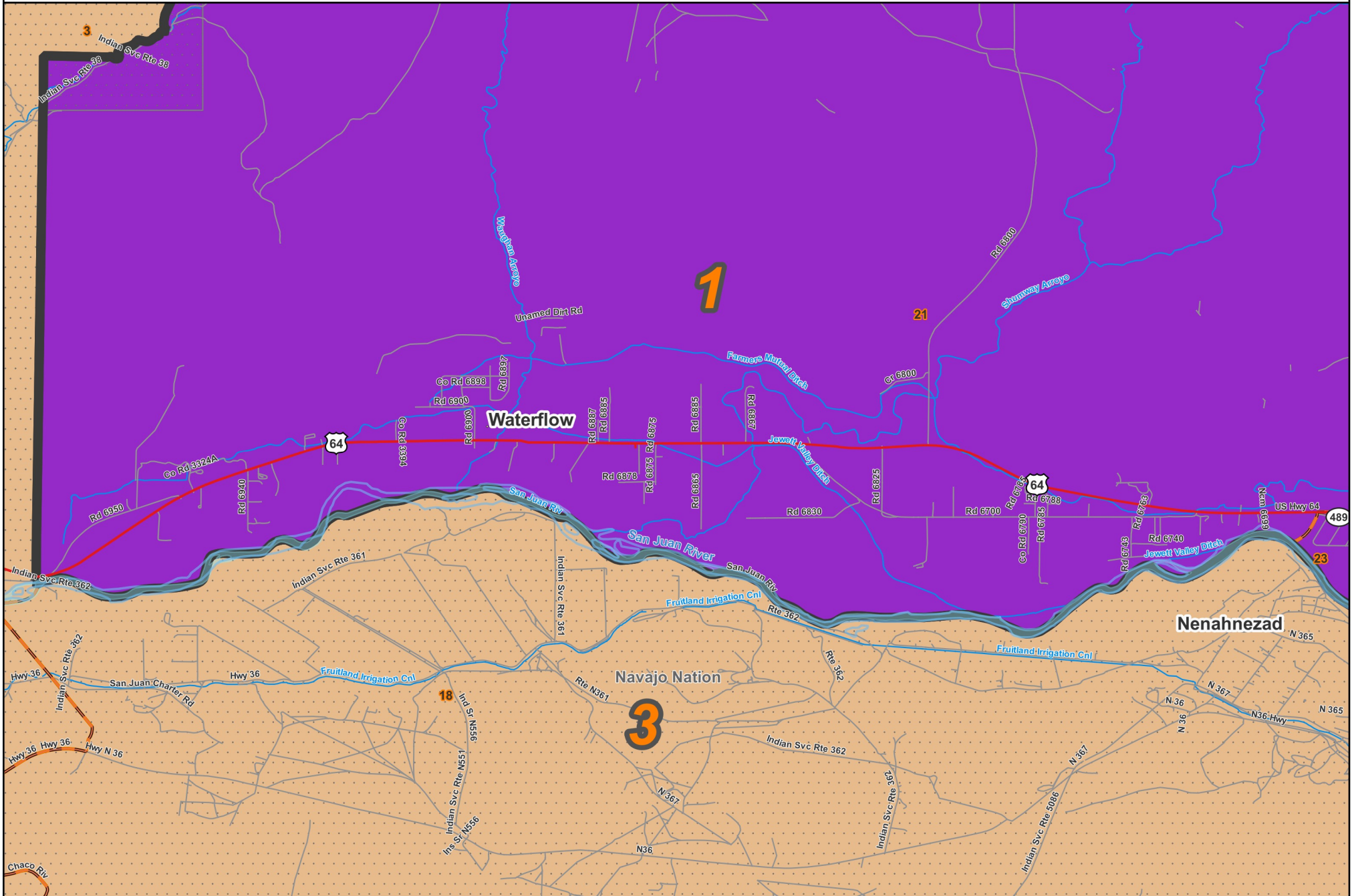
Prepared for the New Mexico Legislative Council Service



0.8 mi

▭ Precincts ▨ Nat. Amer. lands
▭ Counties

06/09/2023



Prepared for the New Mexico Legislative Council Service



0.6 mi

Precincts Nat. Amer. lands
 Counties

06/09/2023

County / Precinct	Total Population	Adult Hispanic	Adult Non-Hispanic				
			White	Native American	Black	Asian	Other
MC 2	618	6.9%	2.8%	88.0%	0.6%	0.0%	1.7%
MC 5	1,001	1.9%	3.6%	90.8%	0.7%	2.9%	0.1%
MC 6	1,248	1.0%	0.3%	98.2%	0.0%	0.0%	0.4%
MC 7	762	0.7%	0.7%	98.0%	0.0%	0.0%	0.7%
MC 8	642	0.9%	0.0%	99.1%	0.0%	0.0%	0.0%
MC 20	1,667	4.5%	3.5%	90.5%	0.2%	0.1%	1.2%
MC 21	1,584	42.8%	12.9%	40.9%	0.8%	0.6%	2.0%
MC 31	1,375	22.4%	18.0%	51.2%	0.7%	2.9%	4.8%
MC 32	719	18.1%	13.0%	63.1%	0.2%	3.1%	2.4%
MC 33	2,154	35.5%	7.9%	52.5%	1.1%	1.1%	1.8%
MC 34	897	45.0%	7.4%	42.8%	0.1%	1.6%	3.0%
MC 35	1,200	30.2%	4.8%	60.7%	1.8%	1.0%	1.5%
MC 37	373	43.8%	8.7%	42.4%	1.8%	0.7%	2.5%
MC 38	819	50.4%	7.8%	38.1%	0.9%	0.2%	2.7%
MC 39	979	19.6%	24.2%	48.4%	0.9%	3.4%	3.5%
MC 40	669	22.9%	21.1%	43.4%	1.0%	5.9%	5.7%
MC 41	1,077	34.1%	11.4%	48.3%	1.0%	2.6%	2.6%
MC 42	336	15.6%	34.8%	26.7%	3.0%	13.7%	6.3%
MC 43	1,333	25.7%	36.8%	29.7%	0.0%	2.7%	5.1%
MC 47	1,154	23.3%	3.5%	65.3%	2.2%	1.3%	4.4%
MC 49	803	21.2%	27.0%	43.7%	1.2%	3.0%	4.0%
MC 50	281	20.4%	31.6%	32.0%	1.5%	2.9%	11.7%
MC 58	1,203	22.6%	16.4%	57.5%	1.5%	0.0%	2.0%
MC 59	440	26.7%	33.0%	28.2%	2.0%	4.9%	5.2%
MC 63	1,268	25.4%	7.7%	63.4%	0.3%	1.2%	2.0%
MC 67	445	2.3%	0.6%	96.0%	0.3%	0.0%	0.9%
MC 68	851	0.5%	0.5%	98.4%	0.0%	0.0%	0.7%
MC 69	732	3.5%	4.5%	89.1%	0.6%	0.0%	2.3%
MC 70	867	23.1%	37.4%	32.3%	1.1%	3.2%	2.9%
SJ 1	1,038	2.5%	1.1%	94.3%	0.0%	0.7%	1.4%
SJ 2	1,843	1.3%	2.1%	94.9%	0.0%	1.3%	0.4%
SJ 3	1,321	1.0%	0.9%	96.4%	0.0%	0.0%	1.7%
SJ 4	1,788	0.8%	1.4%	96.4%	0.3%	0.5%	0.6%
SJ 5	1,679	1.6%	1.1%	95.1%	0.2%	1.0%	1.1%
SJ 6	512	0.7%	1.0%	98.3%	0.0%	0.0%	0.0%

County / Precinct	Total Population	Adult Hispanic	Adult Non-Hispanic				
			White	Native American	Black	Asian	Other
SJ 7	468	1.6%	1.3%	96.8%	0.0%	0.0%	0.3%
SJ 13	1,239	1.6%	0.7%	97.2%	0.0%	0.2%	0.2%
SJ 17	219	0.6%	0.0%	98.2%	0.0%	1.2%	0.0%
SJ 18	1,298	1.6%	0.9%	95.3%	0.0%	0.1%	2.1%
SJ 20	1,156	1.4%	1.4%	95.0%	0.0%	0.0%	2.3%
SJ 24	834	13.0%	47.8%	33.8%	0.5%	0.8%	4.1%
SJ 59	1,166	12.6%	70.6%	10.3%	0.6%	0.3%	5.7%
SJ 108	966	14.5%	68.3%	12.3%	0.3%	0.6%	4.0%
SJ 120	1,494	1.0%	0.6%	97.2%	0.1%	0.3%	0.9%
SJ 130	476	0.5%	0.5%	98.1%	0.0%	0.0%	0.8%
SJ 131	865	0.6%	1.9%	92.4%	0.0%	4.0%	1.1%
SJ 132	953	1.3%	0.5%	96.7%	0.2%	0.0%	1.3%
SJ 134	428	0.3%	0.3%	98.4%	0.0%	0.0%	0.9%
District Total	47,240	13.7%	11.5%	70.9%	0.5%	1.2%	2.2%