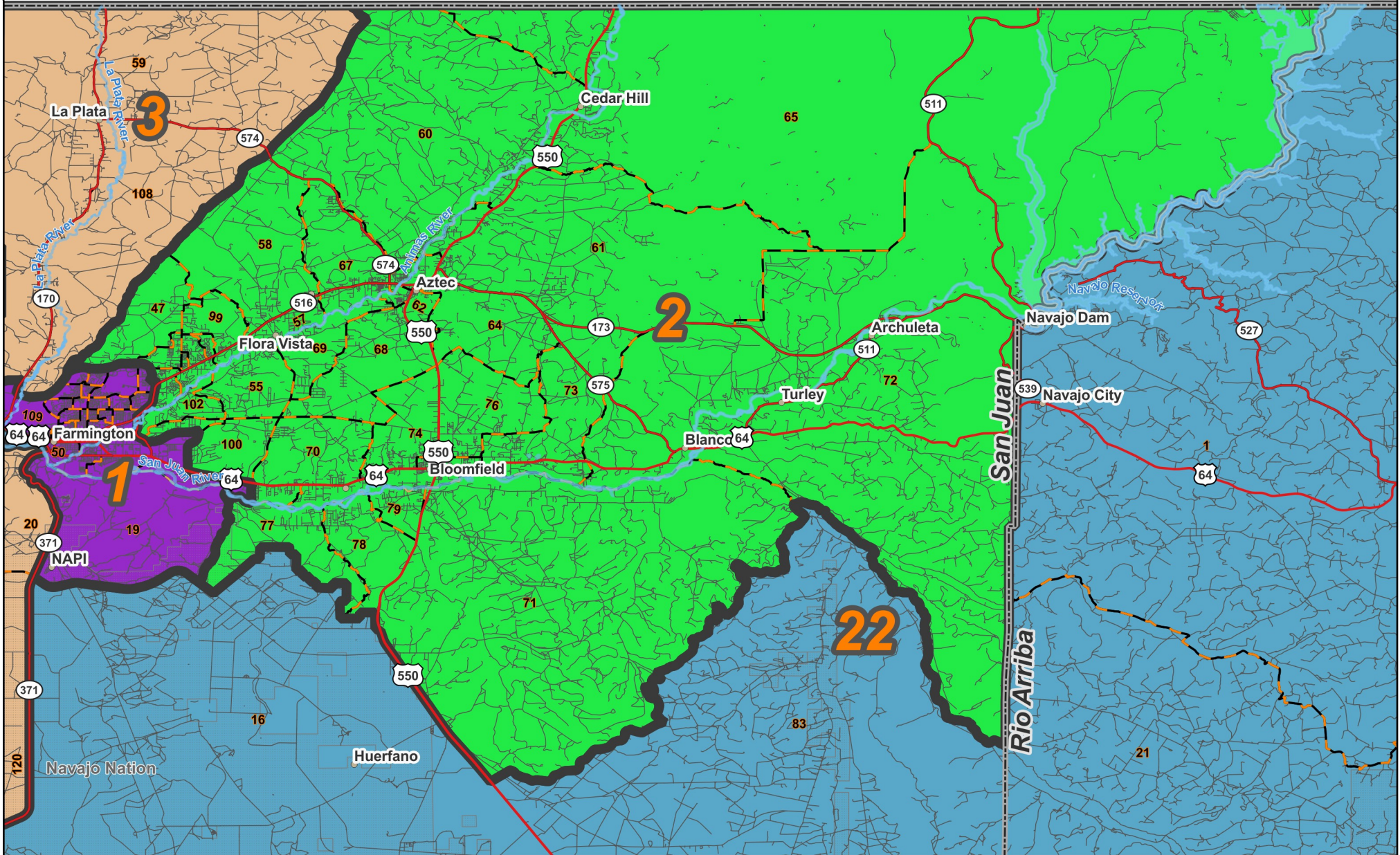


State Senate: District 2



Prepared for the New Mexico Legislative Council Service

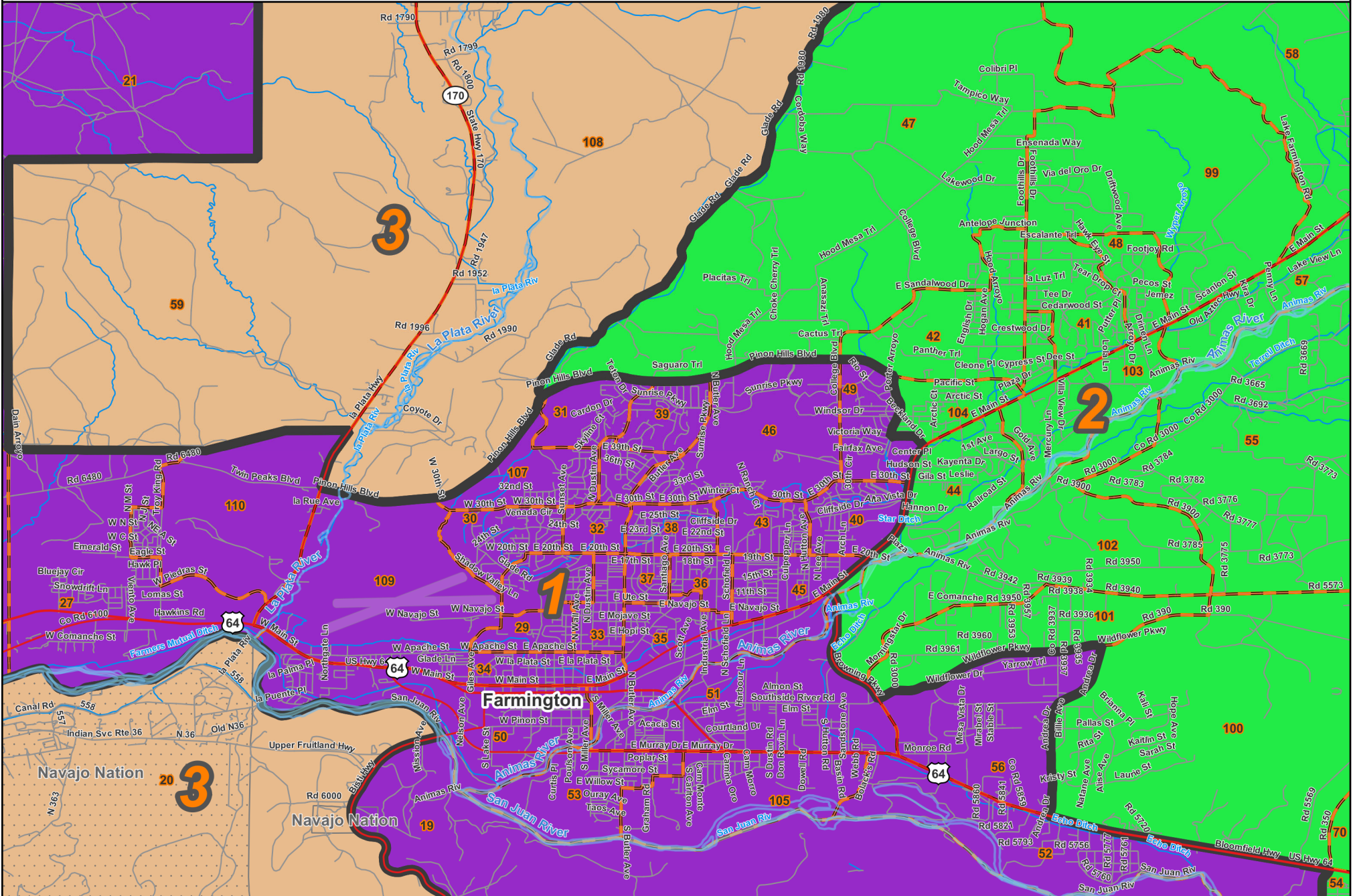


- Precincts
- Counties
- Nat. Amer. Lands

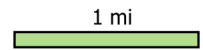
06/13/2023

State Senate: District 2

Farmington



Prepared for the New Mexico Legislative Council Service

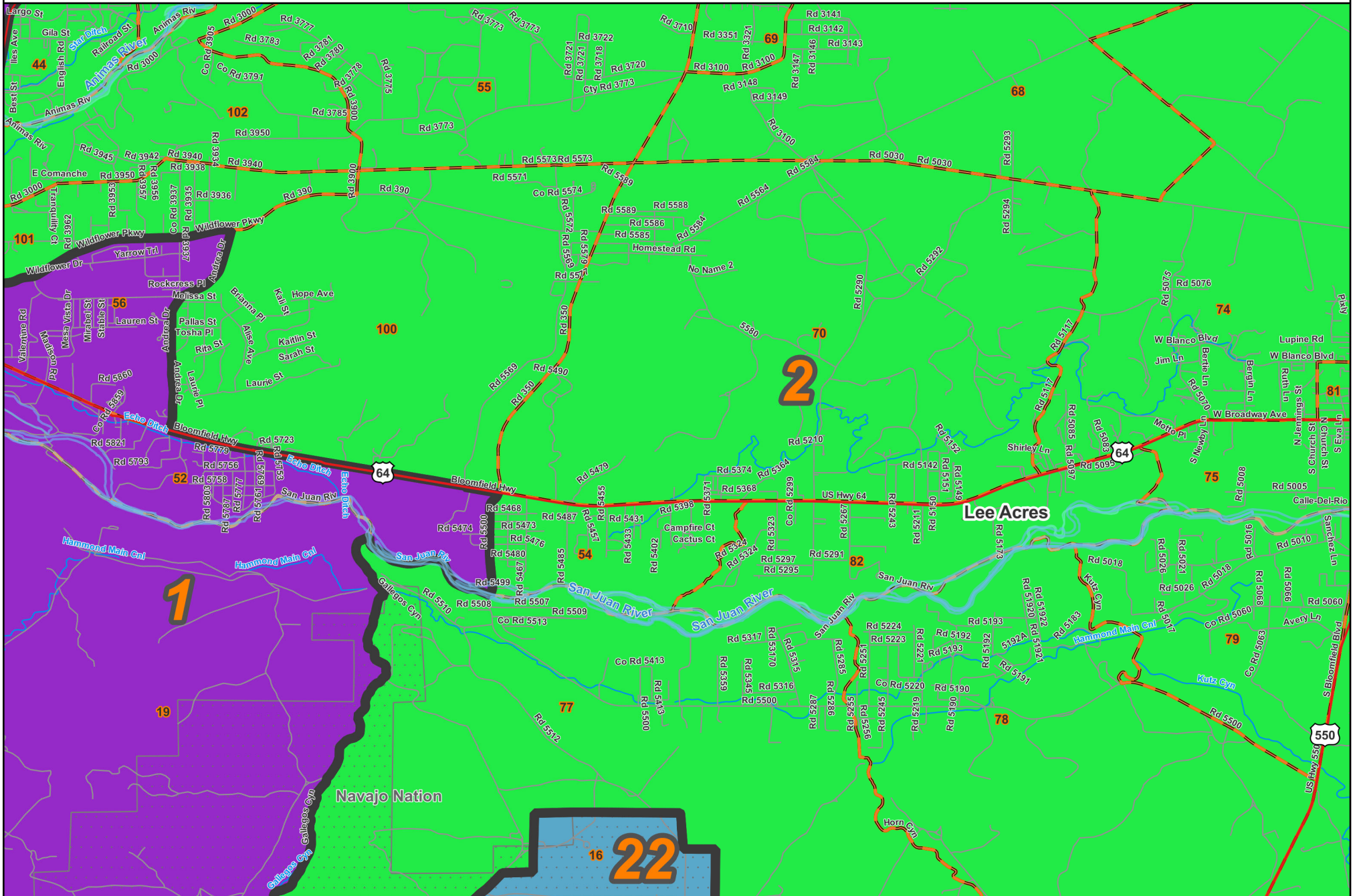


- Precincts
- Nat. Amer. lands
- Counties

06/06/2023

State Senate: District 2

Lee Acres



Prepared for the New Mexico Legislative Council Service



Legend:
Precincts (orange outline)
Counties (grey outline)
Nat. Amer. lands (dotted pattern)

06/06/2023

County / Precinct	Total Population	Adult Hispanic	Adult Non-Hispanic				
			White	Native American	Black	Asian	Other
SJ 41	1,212	13.7%	77.6%	2.9%	0.8%	1.3%	3.8%
SJ 42	1,154	19.2%	66.2%	9.4%	0.6%	1.1%	3.6%
SJ 44	1,456	25.8%	43.2%	24.6%	0.7%	0.7%	4.9%
SJ 47	867	12.9%	71.9%	8.3%	0.6%	0.9%	5.3%
SJ 48	703	19.0%	67.2%	7.9%	0.2%	1.8%	3.8%
SJ 54	1,404	41.1%	35.3%	20.3%	1.3%	0.0%	2.0%
SJ 55	1,234	19.0%	61.5%	16.6%	0.0%	0.0%	2.8%
SJ 57	1,402	15.3%	74.1%	5.9%	0.0%	0.2%	4.6%
SJ 58	1,238	21.9%	65.6%	7.3%	0.1%	0.3%	4.9%
SJ 60	1,341	16.1%	77.3%	3.1%	0.4%	0.5%	2.7%
SJ 61	1,443	15.2%	75.8%	3.6%	0.0%	0.5%	4.9%
SJ 62	1,358	20.3%	61.8%	8.5%	0.6%	0.9%	7.9%
SJ 63	1,222	19.6%	62.3%	15.0%	0.0%	0.5%	2.6%
SJ 64	1,057	20.8%	69.5%	6.0%	0.1%	0.1%	3.5%
SJ 65	1,058	11.0%	79.6%	4.1%	0.1%	0.4%	4.8%
SJ 66	929	23.4%	65.1%	4.5%	0.3%	0.8%	6.0%
SJ 67	1,922	24.9%	58.9%	10.8%	0.1%	0.6%	4.5%
SJ 68	1,777	27.0%	52.7%	14.9%	0.4%	0.6%	4.4%
SJ 69	1,637	22.0%	56.9%	17.5%	0.3%	0.2%	3.1%
SJ 70	1,450	29.8%	47.8%	20.8%	0.3%	0.3%	1.0%
SJ 71	569	14.7%	72.4%	9.7%	0.5%	0.0%	2.8%
SJ 72	1,385	36.7%	54.8%	2.8%	0.0%	0.2%	5.5%
SJ 73	1,290	51.8%	39.7%	5.0%	0.0%	0.4%	3.1%
SJ 74	1,908	27.0%	46.3%	21.8%	0.6%	1.5%	2.8%
SJ 75	1,548	31.2%	39.0%	25.3%	0.6%	0.6%	3.4%
SJ 76	1,665	29.8%	45.5%	18.9%	0.1%	1.4%	4.3%
SJ 77	948	33.7%	52.5%	11.7%	0.4%	0.0%	1.6%
SJ 78	1,106	27.5%	58.8%	9.8%	0.4%	0.2%	3.3%
SJ 79	1,119	25.9%	44.7%	26.6%	0.2%	0.2%	2.3%
SJ 80	1,517	29.1%	41.6%	26.5%	0.1%	0.3%	2.4%
SJ 81	762	27.4%	55.3%	13.3%	0.4%	0.9%	2.7%
SJ 82	661	29.0%	53.3%	14.5%	0.2%	0.0%	3.0%
SJ 90	1,043	24.7%	60.8%	7.4%	0.1%	1.0%	5.9%
SJ 99	661	15.7%	72.4%	8.5%	0.2%	0.8%	2.4%
SJ 100	1,226	27.4%	34.5%	34.7%	0.1%	0.5%	2.8%

County / Precinct	Total Population	Adult Hispanic	Adult Non-Hispanic				
			White	Native American	Black	Asian	Other
SJ 101	1,049	32.9%	23.4%	41.0%	0.0%	0.3%	2.4%
SJ 102	639	22.8%	49.5%	24.5%	0.0%	0.0%	3.2%
SJ 103	1,381	21.0%	65.1%	8.5%	0.8%	1.4%	3.2%
SJ 104	977	19.4%	57.0%	15.4%	1.0%	2.4%	4.8%
District Total	47,318	24.7%	56.7%	13.9%	0.3%	0.6%	3.7%