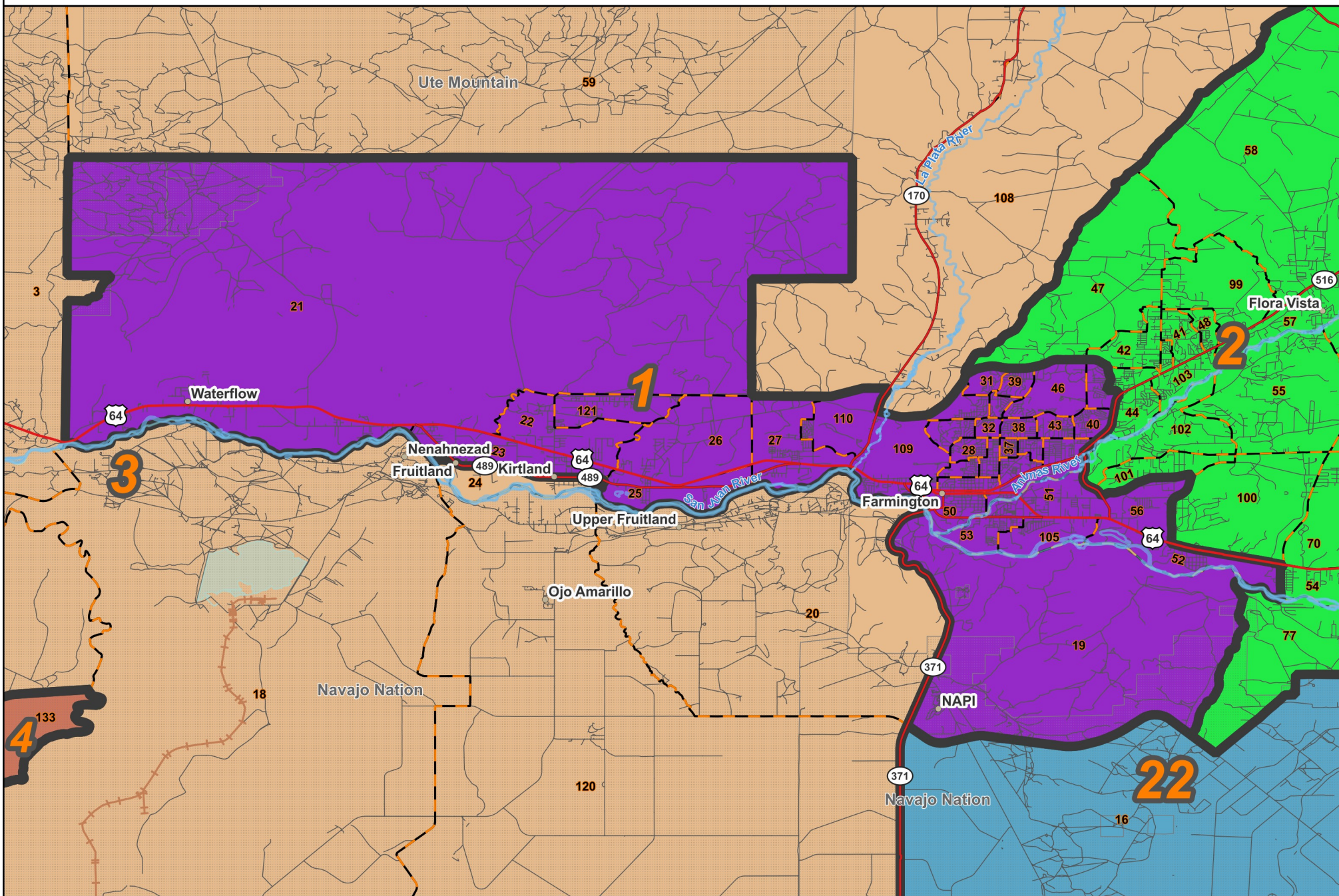


State Senate: District 1



Prepared for the New Mexico Legislative Council Service

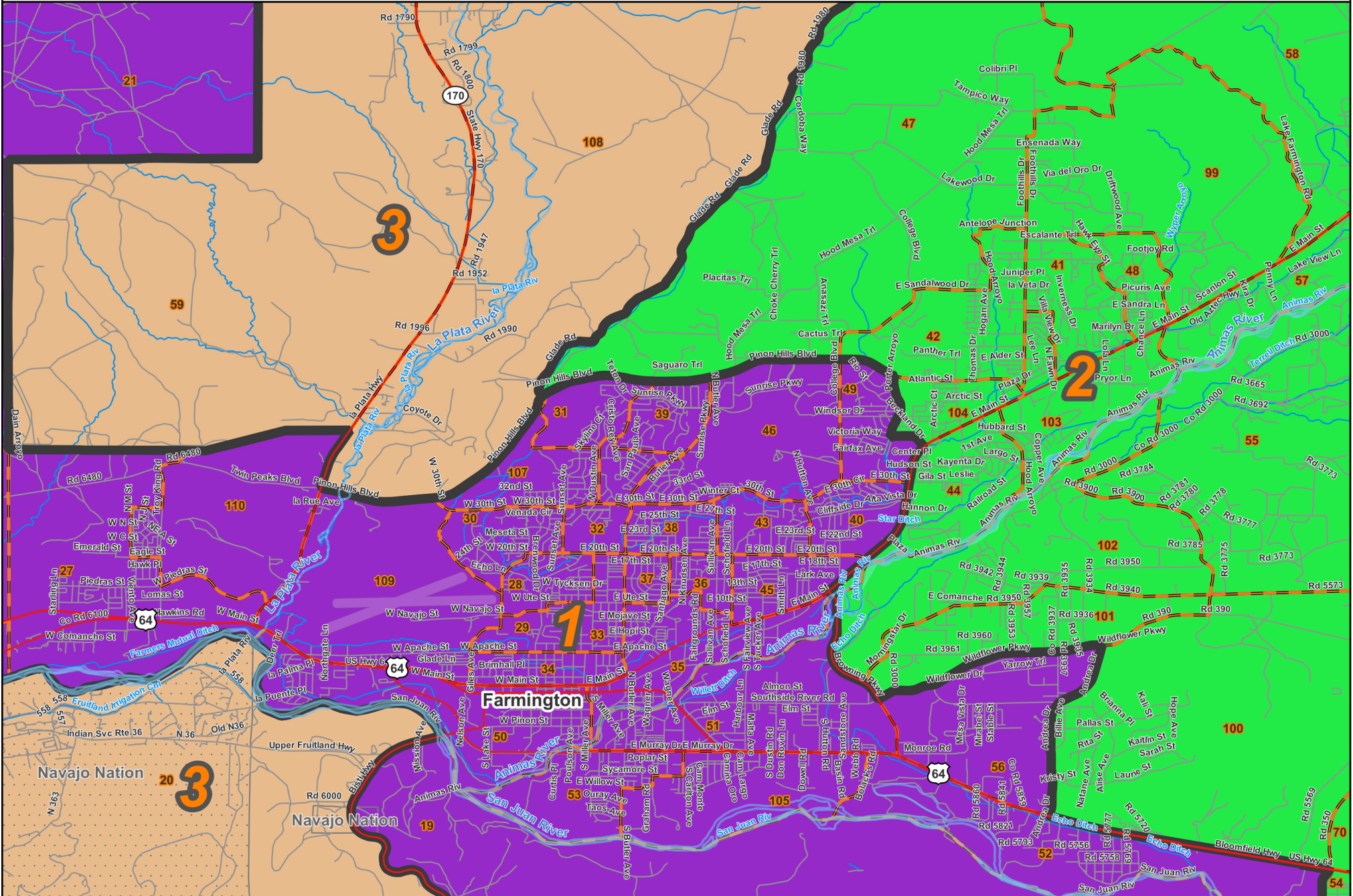


Legend:
Precincts (dashed line)
Counties (solid line)
Nat. Amer. Lands (hatched area)

06/13/2023

State Senate: District 1

Farmington

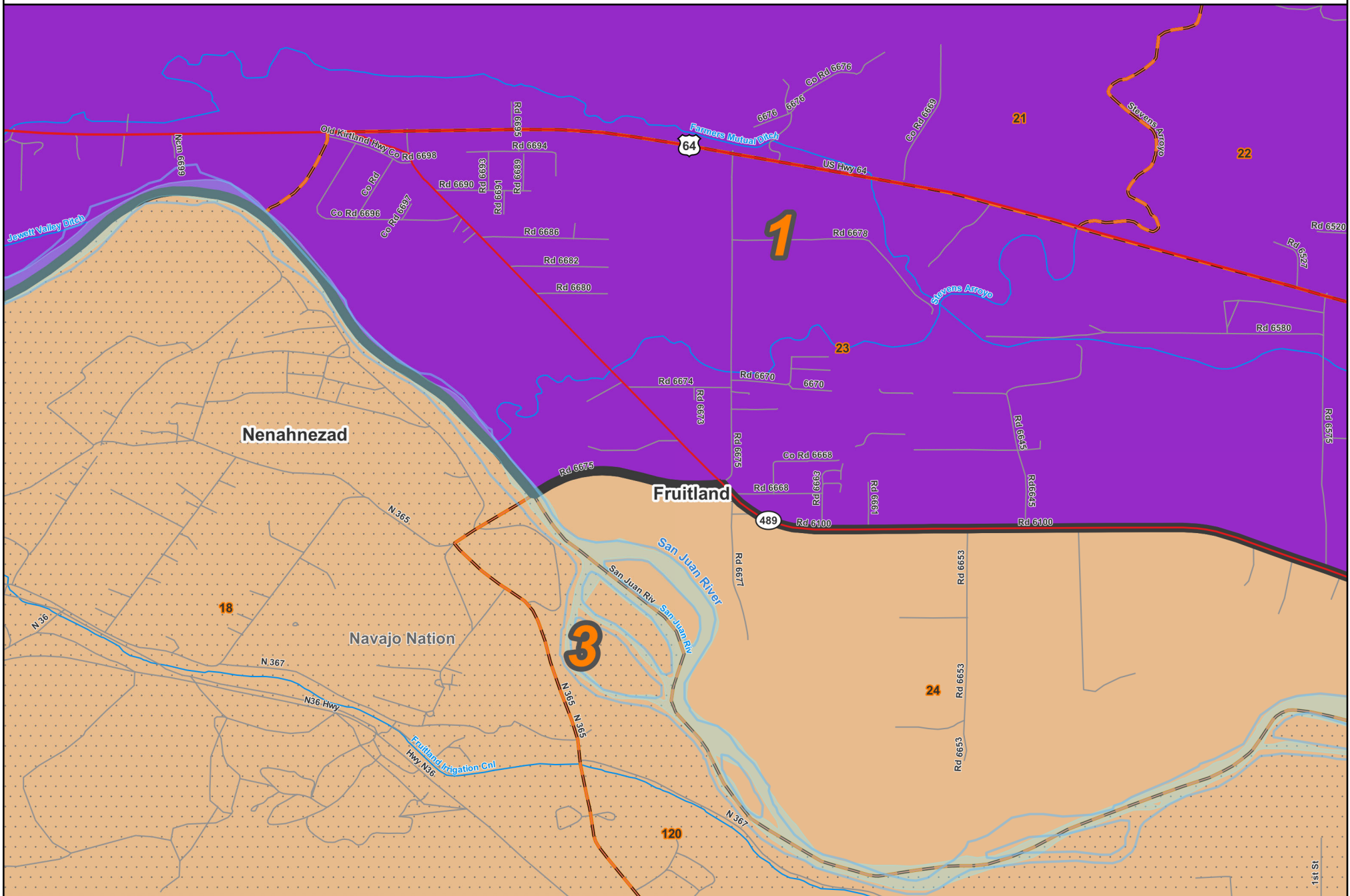


Prepared for the New Mexico Legislative Council Service



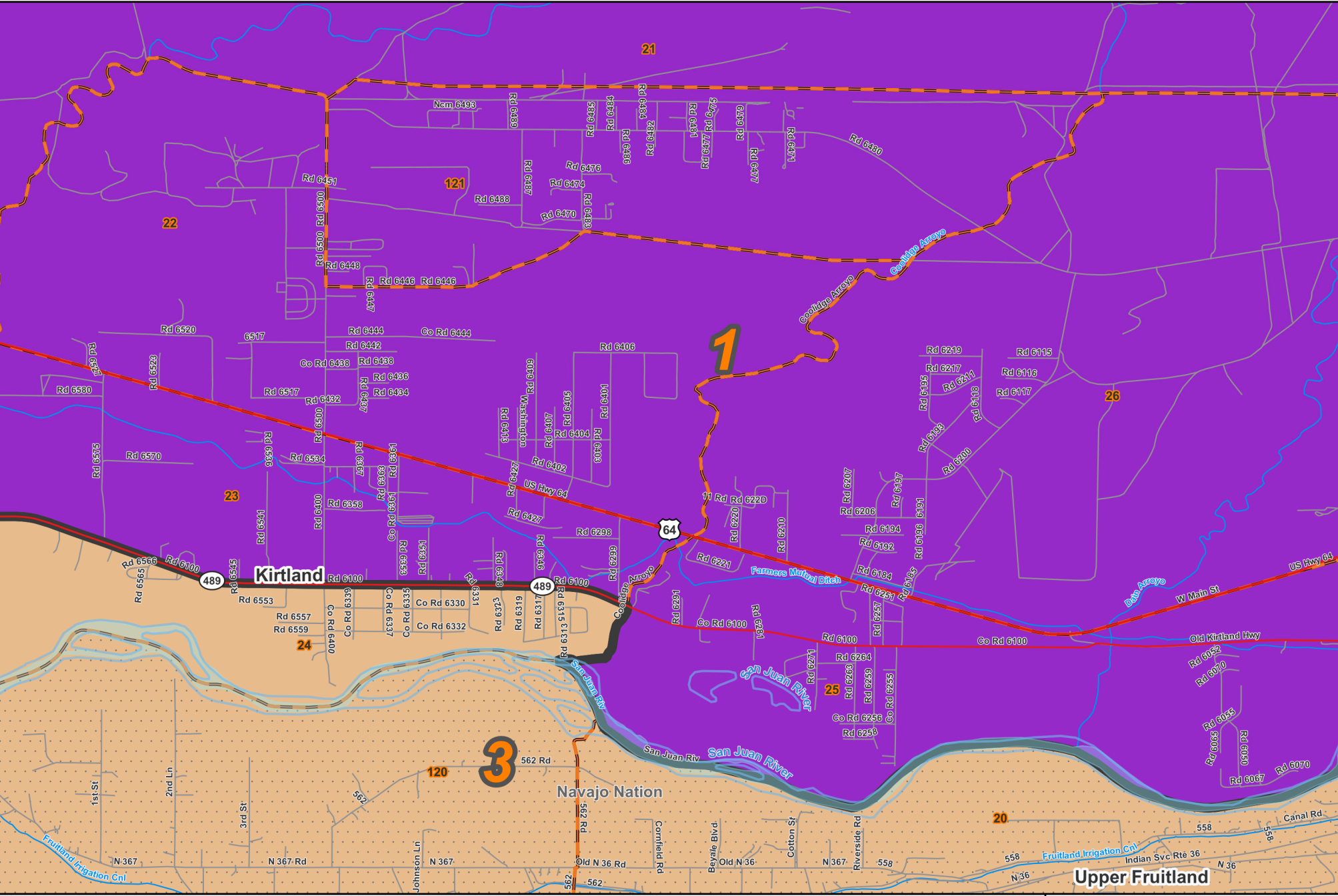
- Precincts
- Nat. Amer. lands
- Counties

06/06/2023



State Senate: District 1

Kirtland



Prepared for the New Mexico Legislative Council Service

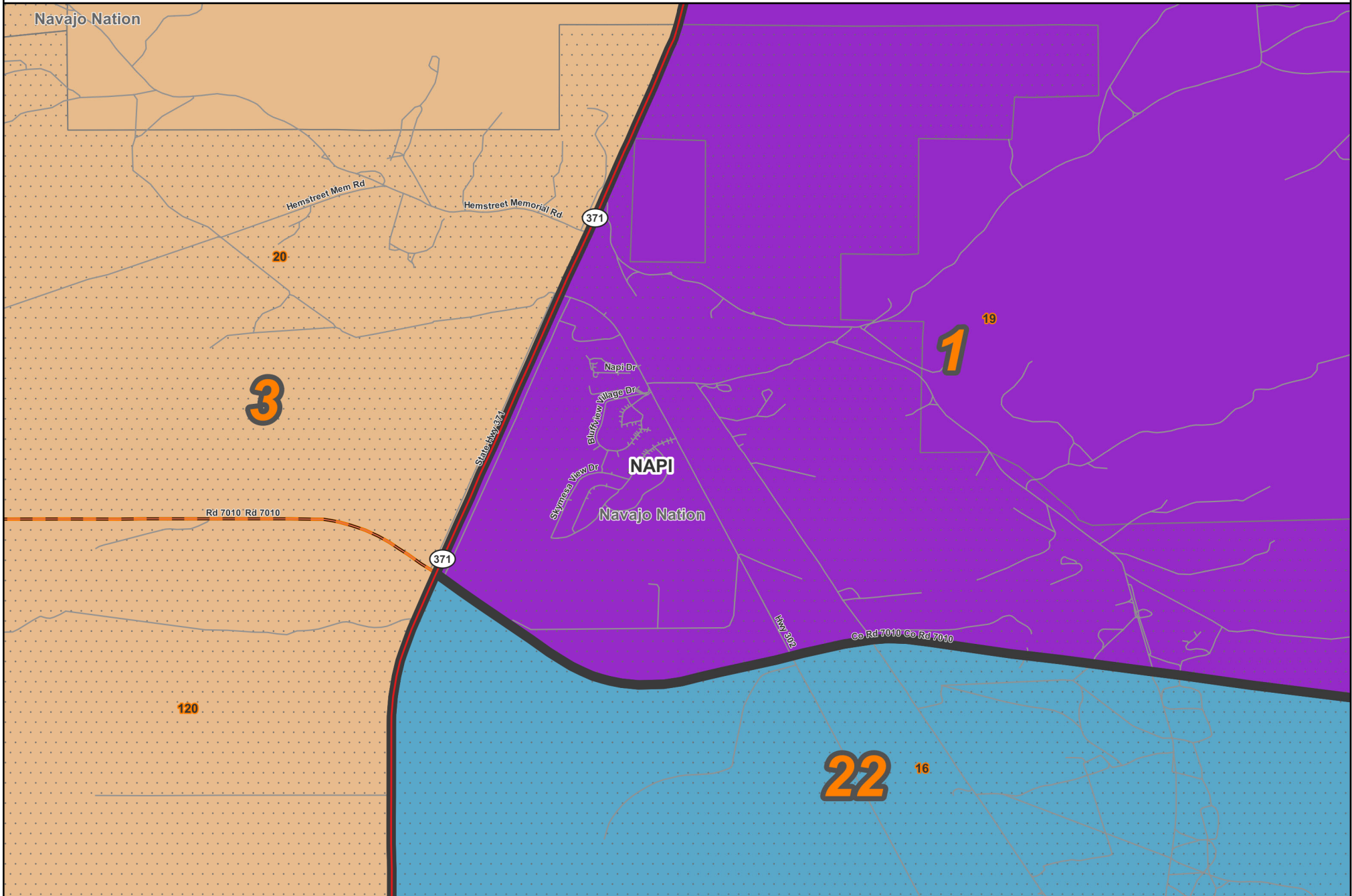


- Precincts
- Nat. Amer. lands
- Counties

06/06/2023

State Senate: District 1

Napi Headquarters



Prepared for the New Mexico Legislative Council Service



0.4 mi

Precincts Nat. Amer. lands
Counties

06/06/2023

County / Precinct	Total Population	Adult Hispanic	Adult Non-Hispanic				
			White	Native American	Black	Asian	Other
SJ 19	806	1.0%	1.1%	93.3%	0.0%	0.2%	4.4%
SJ 21	1,624	6.2%	35.3%	53.7%	0.3%	1.0%	3.5%
SJ 22	1,548	11.6%	17.9%	66.7%	0.4%	0.6%	2.7%
SJ 23	1,422	8.5%	41.8%	45.2%	0.2%	1.0%	3.3%
SJ 25	1,021	11.5%	50.1%	32.9%	0.8%	0.1%	4.6%
SJ 26	1,005	8.9%	15.8%	72.8%	0.0%	0.4%	2.1%
SJ 27	1,989	13.7%	21.3%	60.5%	0.4%	0.5%	3.6%
SJ 28	1,059	19.3%	61.1%	11.9%	2.3%	0.8%	4.6%
SJ 29	982	15.7%	51.1%	26.7%	1.1%	1.3%	4.2%
SJ 30	1,395	14.7%	67.0%	11.8%	0.5%	1.5%	4.6%
SJ 31	678	14.5%	78.0%	1.2%	0.0%	3.4%	3.0%
SJ 32	927	10.8%	34.0%	48.6%	0.3%	3.1%	3.2%
SJ 33	1,531	16.8%	43.0%	32.7%	1.6%	1.0%	5.0%
SJ 34	1,133	16.5%	41.2%	35.3%	1.1%	1.9%	3.9%
SJ 35	1,406	19.1%	42.4%	31.6%	1.4%	2.2%	3.4%
SJ 36	935	24.4%	53.5%	17.5%	0.8%	0.4%	3.3%
SJ 37	1,026	19.0%	56.5%	18.8%	0.3%	0.1%	5.4%
SJ 38	1,756	18.5%	51.6%	23.5%	0.9%	1.7%	3.7%
SJ 39	1,165	14.6%	70.6%	7.4%	0.8%	2.3%	4.2%
SJ 40	1,530	22.2%	47.2%	24.3%	0.7%	0.3%	5.3%
SJ 43	1,378	20.1%	45.0%	29.4%	0.1%	0.6%	4.8%
SJ 45	2,132	23.7%	34.9%	36.0%	0.7%	1.2%	3.5%
SJ 46	1,405	15.8%	59.9%	19.3%	1.1%	0.2%	3.6%
SJ 49	1,424	19.9%	53.8%	19.3%	0.2%	2.7%	4.1%
SJ 50	2,445	16.8%	30.4%	45.5%	2.0%	2.4%	2.9%
SJ 51	1,917	35.3%	30.5%	30.6%	0.6%	0.4%	2.7%
SJ 52	945	34.5%	44.3%	13.5%	1.5%	0.0%	6.2%
SJ 53	1,420	37.9%	23.9%	35.1%	0.7%	0.3%	2.0%
SJ 56	1,631	22.6%	35.0%	37.7%	0.2%	0.8%	3.7%
SJ 105	1,089	24.2%	56.1%	16.7%	0.5%	0.1%	2.4%
SJ 106	954	15.8%	56.4%	18.7%	1.0%	2.4%	5.8%
SJ 107	1,348	16.2%	70.2%	6.4%	0.8%	0.7%	5.6%
SJ 109	1,402	24.4%	24.7%	42.8%	3.6%	0.7%	3.9%
SJ 110	1,730	17.8%	6.3%	72.7%	0.5%	0.4%	2.3%
SJ 121	910	7.8%	15.1%	71.9%	0.6%	0.9%	3.7%

County / Precinct	Total Population	Adult Hispanic	Adult Non-Hispanic				
			White	Native American	Black	Asian	Other
District Total	47,068	18.3%	40.9%	35.1%	0.8%	1.1%	3.8%