

For the New Mexico
Legislative Council Service

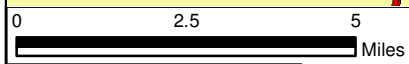
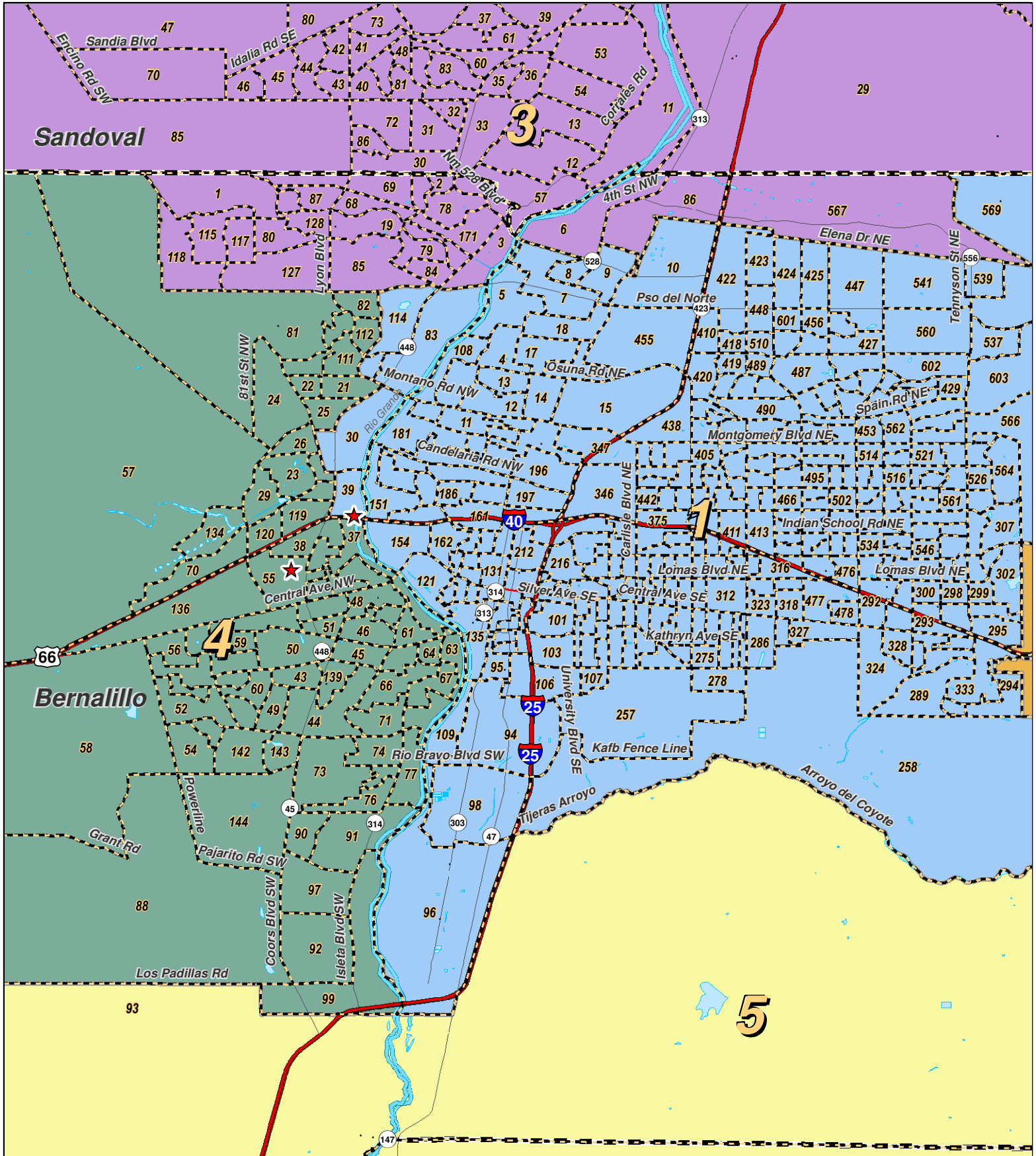


LEGEND

Created: July 12, 2011

- Counties
- Interstate Highway
- Rivers
- US Highway

Research & Polling, Inc. distributes this map assuming no liability for any errors, omissions, or inaccuracies in the information provided regardless of the cause in reliance upon any maps.



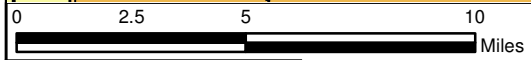
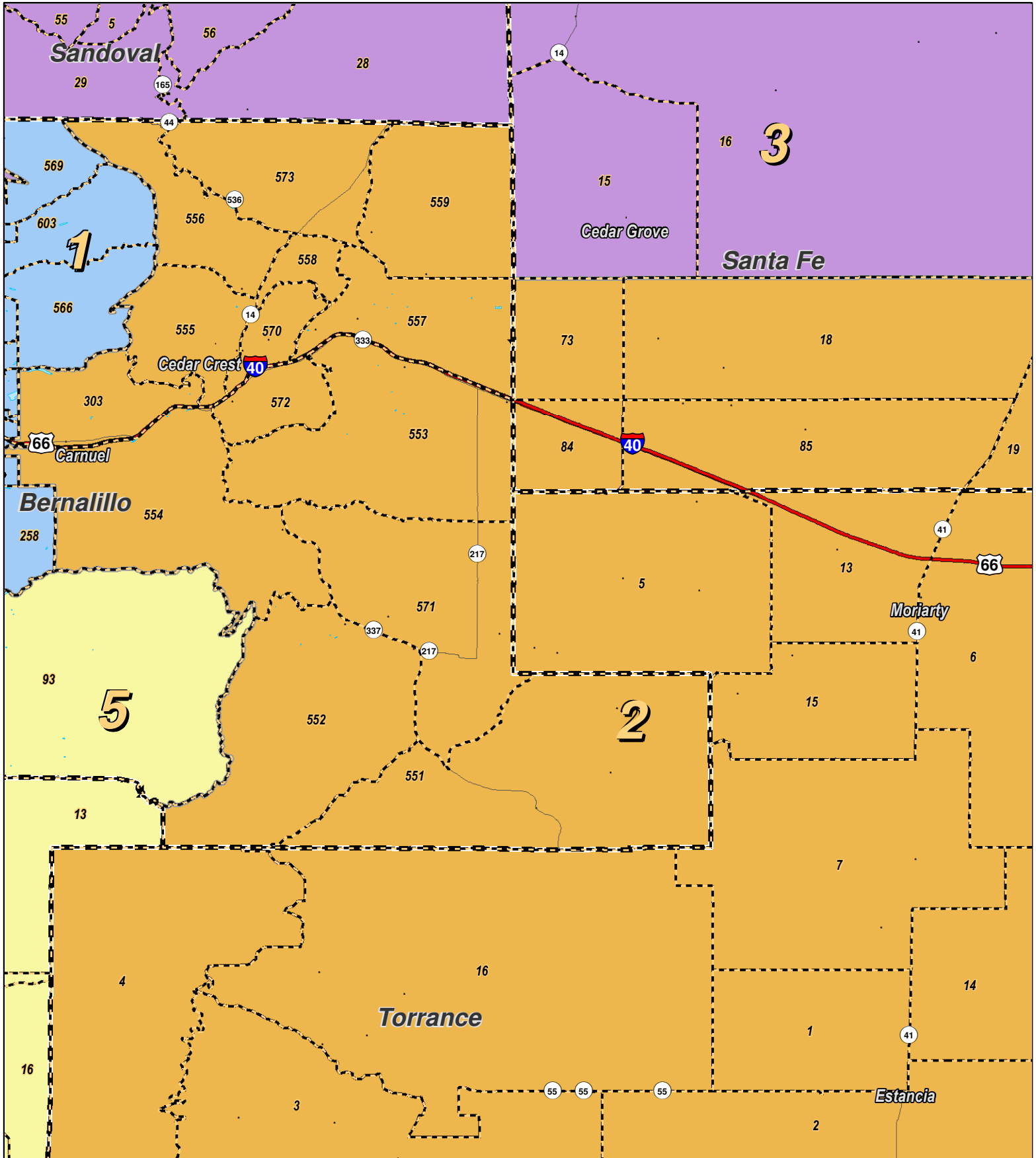
For the New Mexico
Legislative Council Service



LEGEND Created: July 12, 2011

Precincts	Interstate
Counties	US Highway
Rivers	State Highway

Research & Polling, Inc. distributes this map assuming no liability for any errors, omissions, or inaccuracies in the information provided regardless of the cause in reliance upon any maps.



For the New Mexico
Legislative Council Service

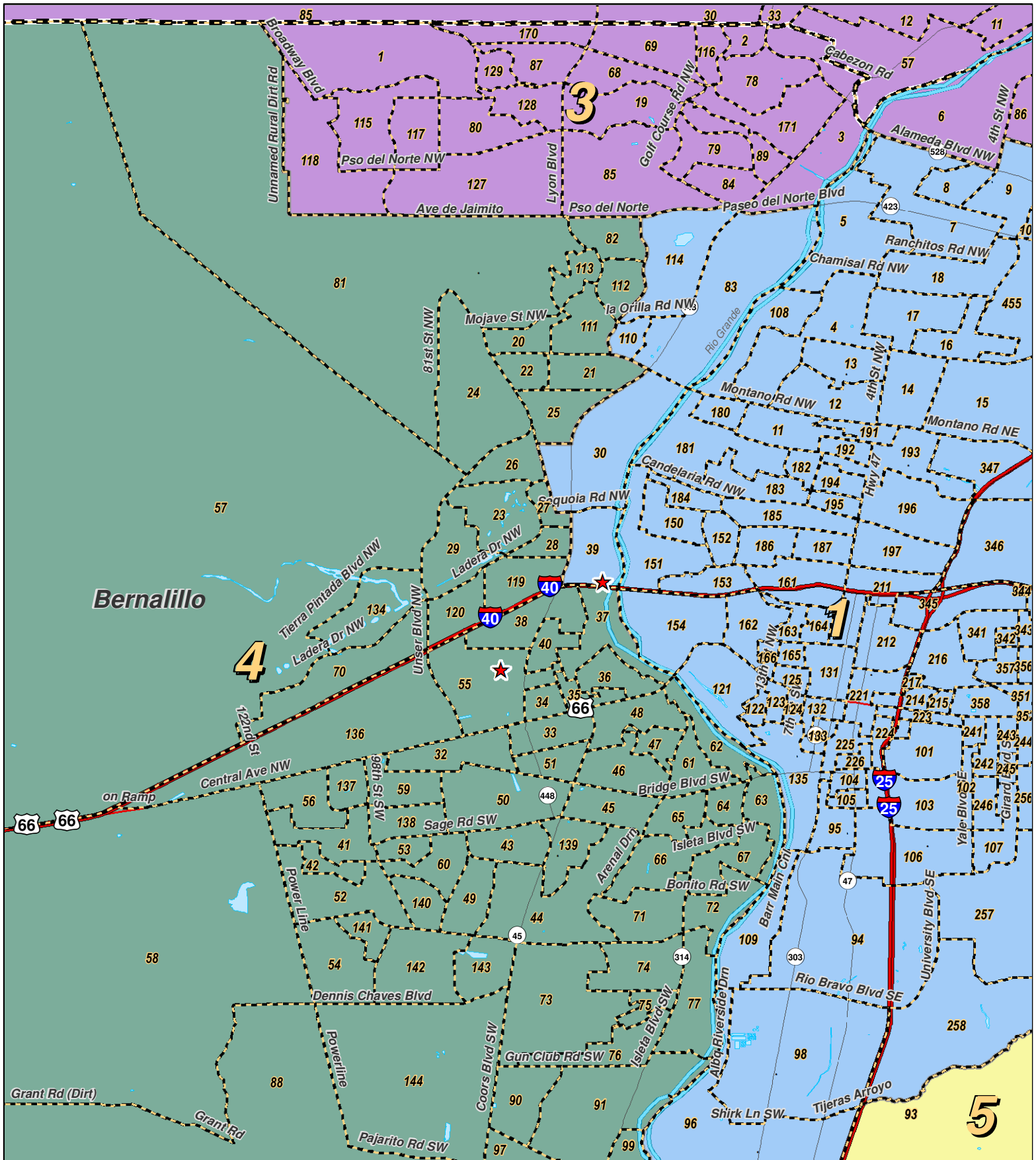


LEGEND

Created: July 12, 2011

Precincts	Interstate
Counties	US Highway
Rivers	State Highway

Research & Polling, Inc. distributes this map assuming no liability for any errors, omissions, or inaccuracies in the information provided regardless of the cause in reliance upon any maps.



0 2.5 5 Miles

RESEARCH & POLLING INC.

For the New Mexico Legislative Council Service

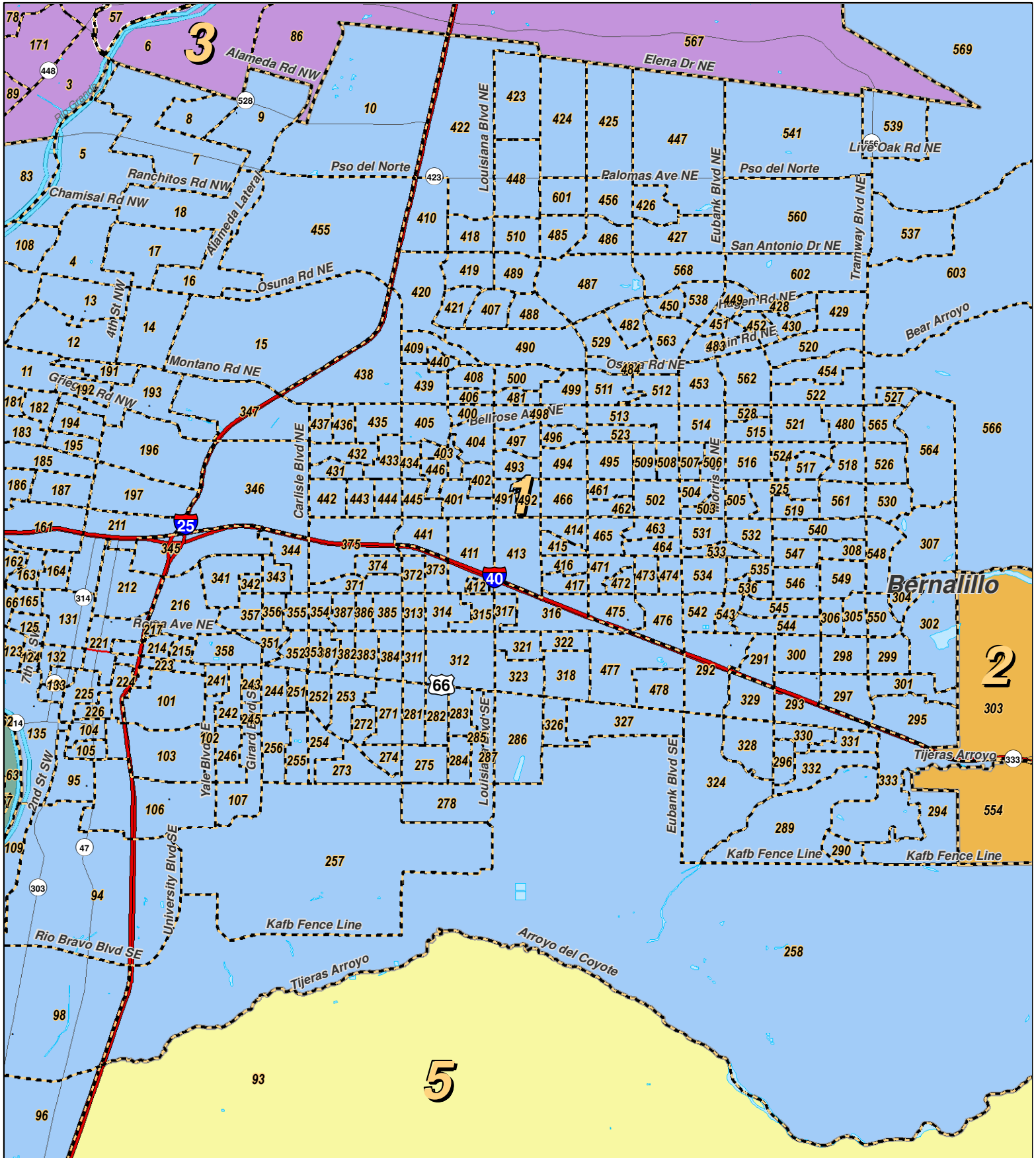


LEGEND

Created: July 12, 2011

- Counties
- Rivers
- Interstate
- US Highway
- State Highway

Research & Polling, Inc. distributes this map assuming no liability for any errors, omissions, or inaccuracies in the information provided regardless of the cause in reliance upon any maps.



0 2.5 5 Miles

RESEARCH & POLLING INC.

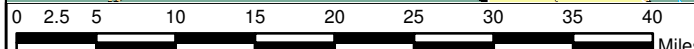
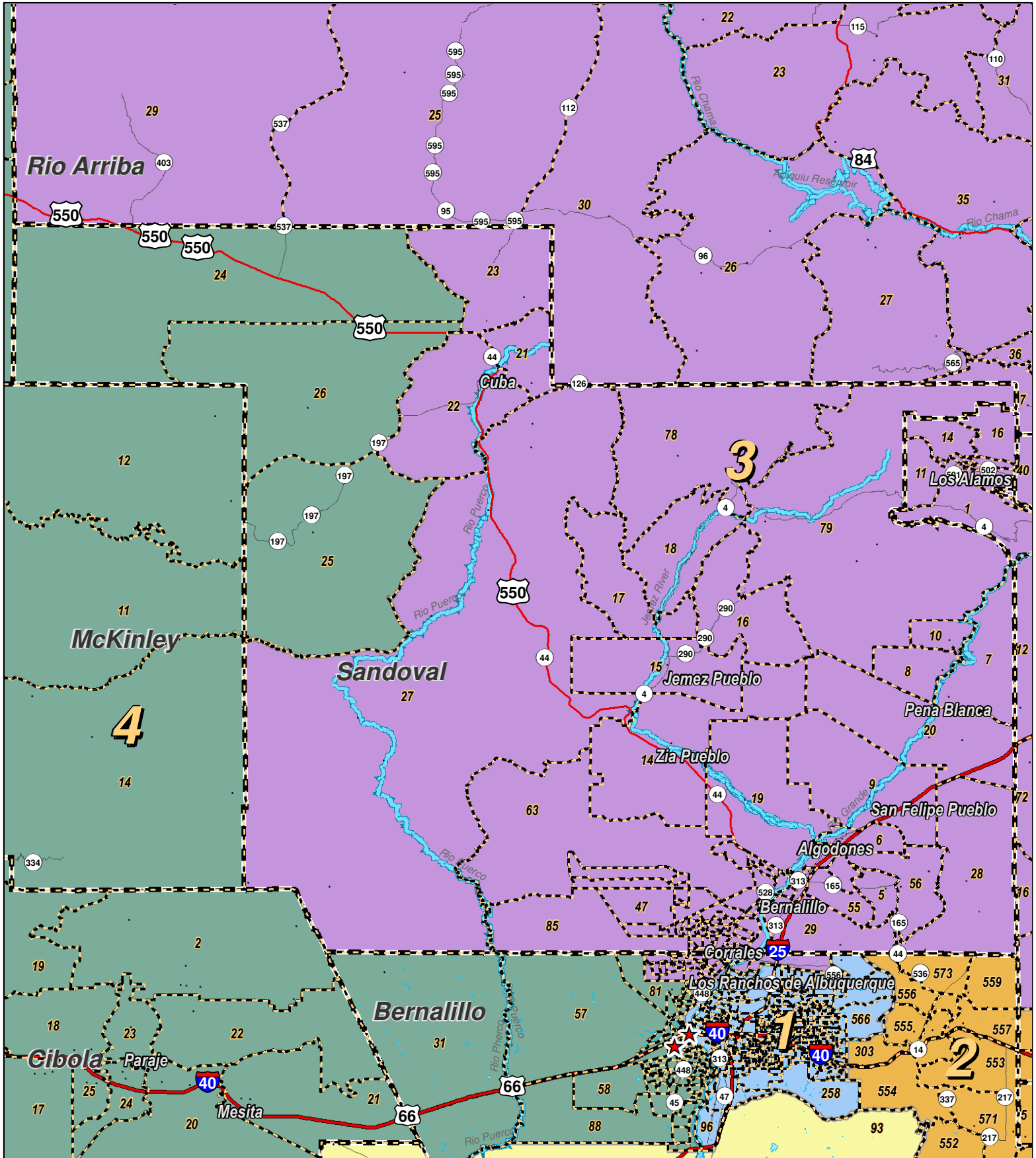
For the New Mexico Legislative Council Service



LEGEND Created: July 12, 2011

Counties	Interstate
Rivers	US Highway
	State Highway

Research & Polling, Inc. distributes this map assuming no liability for any errors, omissions, or inaccuracies in the information provided regardless of the cause in reliance upon any maps.



For the New Mexico
Legislative Council Service



LEGEND Created: July 12, 2011

- Precincts
- Counties
- Rivers
- Interstate
- US Highway
- State Highway

Research & Polling, Inc. distributes this map assuming no liability for any errors, omissions, or inaccuracies in the information provided regardless of the cause in reliance upon any maps.

District	Pop	Deviation	Hispanic	Non-Hispanic Origin				
				White	Native American	Black	Asian	Other Races
1	408,133	-3,703 -0.9%	159,579 39.1%	201,133 49.3%	15,849 3.9%	10,756 2.6%	11,789 2.9%	9,027 2.2%
18+	322,558		114,099 35.4%	172,983 53.6%	11,859 3.7%	8,523 2.6%	9,366 2.9%	5,728 1.8%
2	420,226	8,390 2.0%	193,915 46.1%	203,297 48.4%	3,482 0.8%	10,118 2.4%	3,074 0.7%	6,340 1.5%
18+	311,761		129,416 41.5%	165,703 53.2%	2,761 0.9%	7,626 2.4%	2,473 0.8%	3,782 1.2%
3	413,651	1,815 0.4%	191,521 46.3%	177,239 42.8%	26,063 6.3%	5,387 1.3%	5,887 1.4%	7,554 1.8%
18+	313,466		133,741 42.7%	148,311 47.3%	18,263 5.8%	4,083 1.3%	4,591 1.5%	4,477 1.4%
4	407,590	-4,246 -1.0%	172,053 42.2%	101,611 24.9%	119,521 29.3%	4,820 1.2%	2,613 0.6%	6,972 1.7%
18+	286,928		113,750 39.6%	82,159 28.6%	81,589 28.4%	3,752 1.3%	2,058 0.7%	3,620 1.3%
5	409,579	-2,257 -0.5%	236,335 57.7%	150,530 36.8%	10,453 2.6%	4,381 1.1%	2,942 0.7%	4,938 1.2%
18+	305,794		160,320 52.4%	128,692 42.1%	7,490 2.4%	3,469 1.1%	2,468 0.8%	3,355 1.1%
Totals	2,059,179	Ideal: 411,836	953,403 46.3%	833,810 40.5%	175,368 8.5%	35,462 1.7%	26,305 1.3%	34,831 1.2%
18+	1,540,507		651,326 42.3%	697,848 45.3%	121,962 7.9%	27,453 1.8%	20,956 1.4%	20,962 1.1%

District Profile

District	Total Population	Deviation		Adult Hispanic	Adult Non-Hispanic			Performance Measure		Registered Voters				
					White	Native American	Black	Dem	Rep	Total	% Dem	% Rep	% DTS	% Other
1	408,133	-3,703	-0.9%	35.4%	53.6%	3.7%	2.6%	53.8%	46.2%	302,810	45.9%	33.8%	16.8%	3.5%
2	420,226	8,390	2.0%	41.5%	53.2%	0.9%	2.4%	41.3%	58.7%	226,652	45.1%	39.0%	14.4%	1.7%
3	413,651	1,815	0.4%	42.7%	47.3%	5.8%	1.3%	61.7%	38.3%	241,484	57.7%	23.8%	15.3%	3.1%
4	407,590	-4,246	-1.0%	39.6%	28.6%	28.4%	1.3%	54.9%	45.1%	175,634	50.1%	30.8%	16.2%	2.9%
5	409,579	-2,257	-0.5%	52.4%	42.1%	2.4%	1.1%	51.4%	48.6%	213,582	48.5%	31.7%	16.8%	3.0%
New Mexico	2,059,179			42.3%	45.3%	7.9%	1.8%	53.0%	47.0%	1,160,162	49.3%	31.9%	15.9%	2.9%

NM Public Regulation Commission: Concept B

District Definitions by County and Precinct

PUBLIC REGULATION COMMISSION DISTRICT ONE.--Public regulation commission district one is composed of Bernalillo county precincts 4, 5, 7 through 18, 30, 39, 83, 94 through 96, 98, 101 through 110, 114, 121 through 125, 131 through 133, 135, 150 through 154, 161 through 166, 180 through 187, 191 through 197, 211, 212, 214 through 217, 221, 223 through 226, 241 through 246, 251 through 258, 271 through 275, 278, 281 through 287, 289 through 302, 304 through 308, 311 through 318, 321 through 324, 326 through 333, 341 through 347, 351 through 358, 371 through 375, 381 through 387, 400 through 456, 461 through 466, 471 through 478, 480 through 500, 502 through 550, 560 through 566, 568, 569 and 601 through 603.

PUBLIC REGULATION COMMISSION DISTRICT TWO.--Public regulation commission district two is composed of Bernalillo county precincts 303, 551 through 559 and 570 through 573; Chaves county; Colfax county; Curry county; De Baca county; Eddy county; Guadalupe county; Harding county; Lea county; Mora county; Otero county precincts 1 through 10, 15 through 37 and 39 through 41; Quay county; Roosevelt county; San Miguel county; Santa Fe county precincts 18, 19, 73, 84 and 85; Tarrant county; and Union county.

PUBLIC REGULATION COMMISSION DISTRICT THREE.--Public regulation commission district three is composed of Bernalillo county precincts 1 through 3, 6, 19, 68, 69, 78 through 80, 84 through 87, 89, 115 through 118, 127 through 129, 170, 171 and 567; Los Alamos county; Rio Arriba county; Sandoval county precincts 1 through 23, 27 through 76 and 78 through 86; Santa Fe county precincts 1 through 17, 20 through 72, 74 through 83 and 86 through 88; and Taos county.

PUBLIC REGULATION COMMISSION DISTRICT FOUR.--Public regulation commission district four is composed of Bernalillo county precincts 20 through 29, 31 through 38, 40 through 67, 70 through 77, 81, 82, 88, 90 through 92, 97, 99, 111 through 113, 119, 120, 134 and 136 through 144; Cibola county; McKinley county; San Juan county; Sandoval county precincts 24 through 26; and Socorro county precinct 15.

PUBLIC REGULATION COMMISSION DISTRICT FIVE.--Public regulation commission district five is composed of Bernalillo county precinct 93; Catron county; Dona Ana county; Grant county; Hidalgo county; Lincoln county; Luna county; Otero county precincts 11 through 14 and 38; Sierra county; Socorro county precincts 1 through 14 and 16 through 26; and Valencia county.