



U.S. DEPARTMENT OF  
**ENERGY**

OFFICE OF  
**ENVIRONMENTAL  
MANAGEMENT**



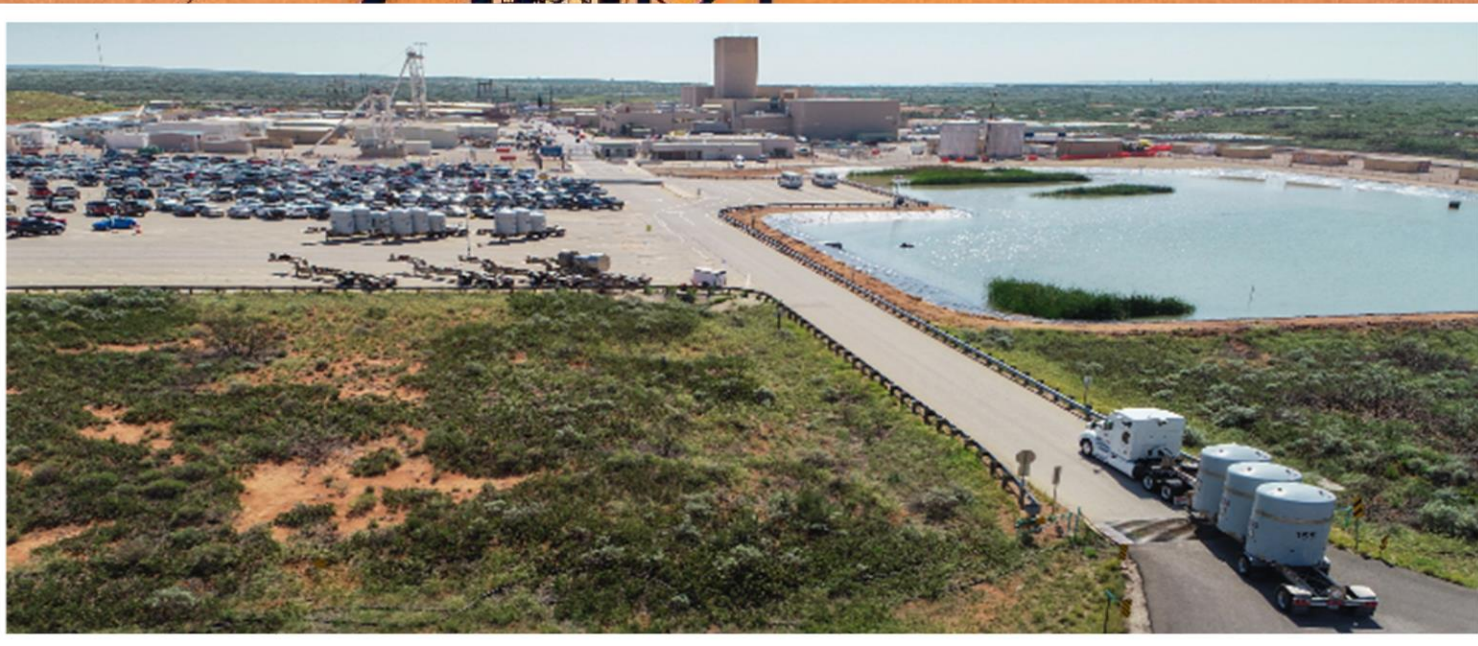
James Mason  
U.S. Department of Energy-Carlsbad Field Office  
Institutional Affairs Program Manager

**Transportation Infrastructure Revenue Subcommittee**

**July 24, 2023**



The Waste Isolation Pilot Plant mission is to provide safe, compliant, and efficient characterization, certification, transportation and disposal of defense transuranic waste.





- Currently emplacing waste in Panel 8
- Mining west drifts to replacement Panels 11 & 12







- Preferred Routes
  - Highway Route
  - Controlled Quantity
  - Interstate highways
  - Four-lane divided highways (with shoulder)
  - Avoid populated areas (use of truck bypasses)
  - Two-lane highway with shoulder



## TRUPACT Testing Requirements

- TRUPACT-II, TRUPACT-III, HalfPACT & RH-72B CASKS must be certified to Nuclear Regulatory Commission Type B requirements:
- 30 foot drop onto a flat, unyielding surface
- 40 inch drop onto a 6 inch diameter steel rod at least 8 inches long
- 1,475 degrees F for 30 minutes
- Immersion test equivalent to external pressure under 50 feet of water







- Must be a U.S. citizen
- Must have 325,000 miles in last five years/100,000 per year in two of last five years
- Must not have repeated chargeable incidents, moving violations, or a single DWI/DUI in their private vehicles
- Must not have been charged with a moving violation in a commercial vehicle in last five years
- Must pass background check

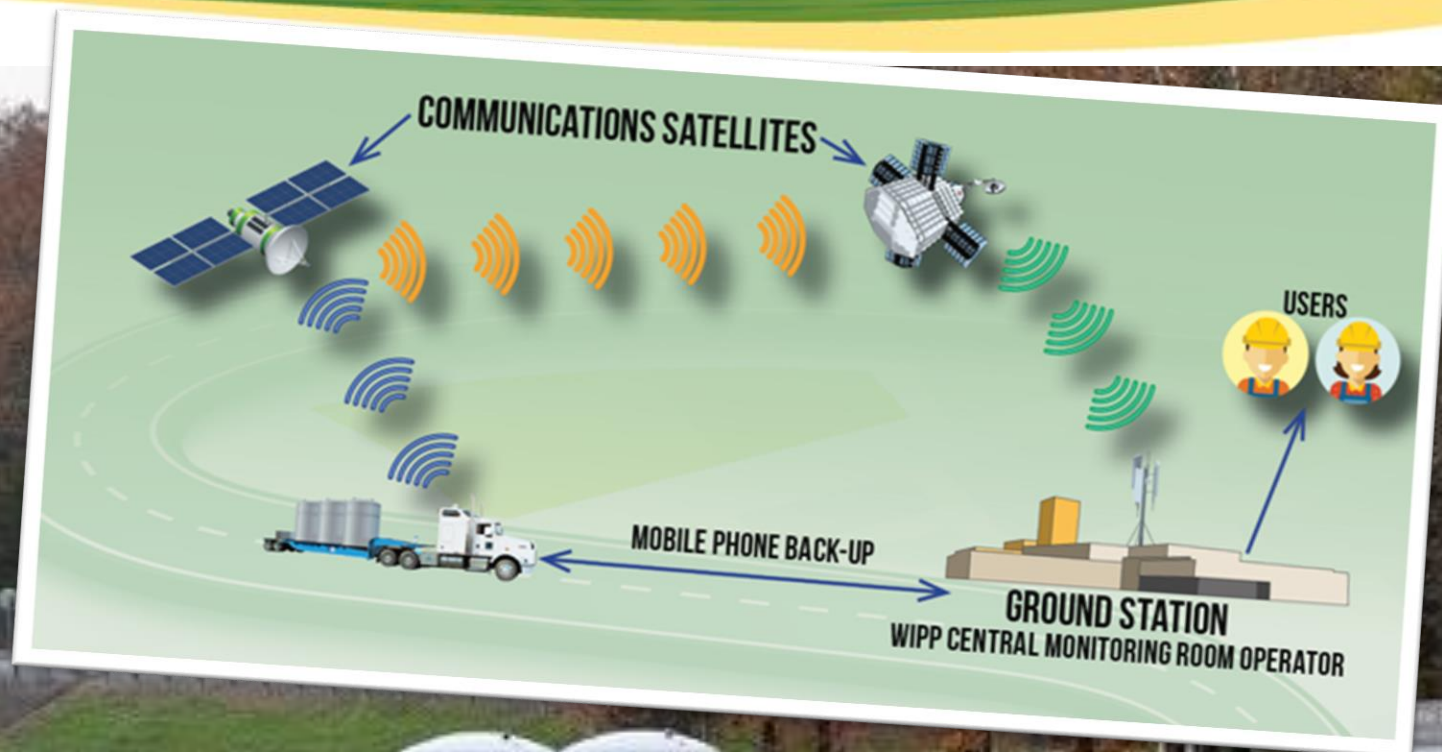




- CAST Specialty Transportation
- Kenworth T680
- Automatic transmissions
- Governed at 65 mph
- Cameras
- Bendix® Wingman® Fusion™
  - Adaptive cruise control w/braking
  - Lane departure
  - Overspeed alert and action
  - Anti roll-over technology
  - Front end collision mitigation radar



- Fully automated, nationwide satellite tracking
- Five-minute updates
- States and tribes have access to password-protected Web site
- Drivers in constant communication with WIPP's Central Monitoring Room







- Must pass Commercial Vehicle Safety Alliance Level VI inspection (100% defect free)
- Two drivers per shipment
- Driver inspects within first 50 miles
- Additional inspections every 3 hours or 150 miles
- Shipments not allowed to travel during weather warnings
- States can perform additional inspections (CO and NM)



## Emergency Responder Preparedness

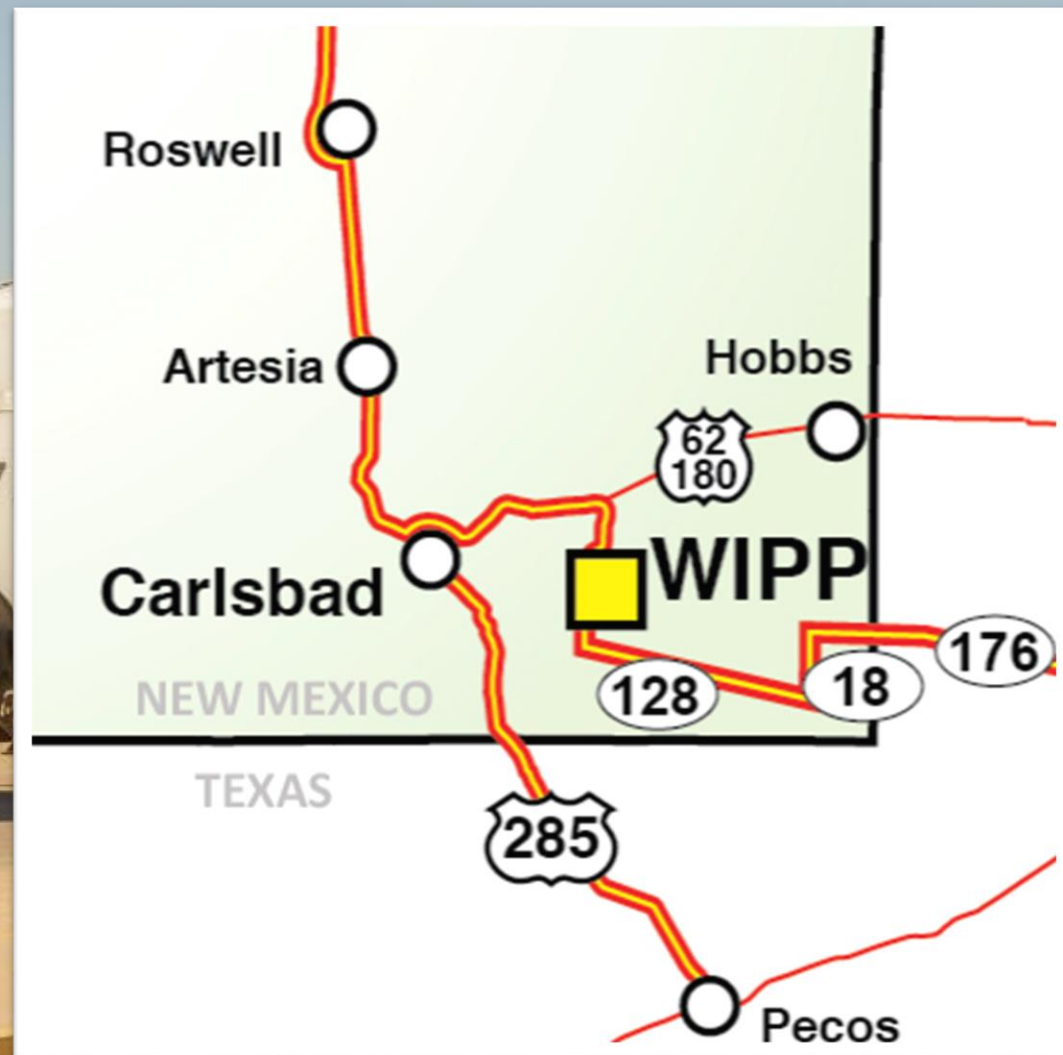
In coordination with states and tribal nations, first responder training and full scale accident preparedness drills (WIPPPTREX) are provided along WIPP routes.

- Trainings include:
  - Modular Emergency Radiological Response
  - Transportations Trainings (MERRTT & CMERRTT)
  - RAD Technician, RAD Specialist, Hospital and Coroner classes are also provided





- Total shipments received: **13,556**
- Total loaded miles traveled: **16,200,601**
- Total contact-handled waste containers emplaced: **274,194**
- Total remote-handled waste canisters emplaced: **775**
  - Shielded containers emplaced: **56**
- DOE Cleanup sites closed: **22**







Questions?