

Interim Water & Natural Resources Committee Farmington, New Mexico August 8, 2023

Estevan Lopez, P.E.
New Mexico UCRC Commissioner &
Governor's Representative for New Mexico on Colorado River Matters



Colorado River
Compact 1922

Bishops Lodge – Santa Fe,
New Mexico

Colorado River Basin



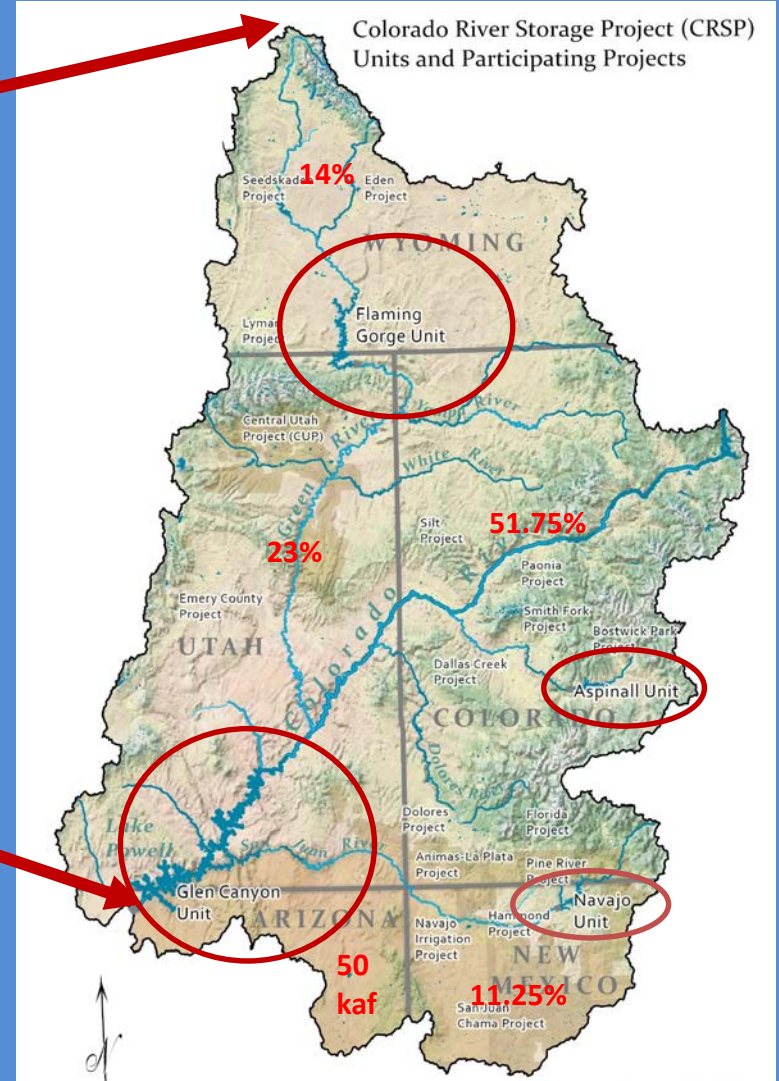
- 1922 Compact - 7 basin states share Colorado River Water
 - Upper Basin - 7.5 MAF/Y
 - Lower Basin – 7.5 MAF/Y + 1.0MAF/Y
- 1944 Treaty - Mexico gets 1.5 MAF/Y under the

1948 Upper Colorado River Compact

- Creates ability for Upper Basin to implement 1922 Compact
- Establishes apportionments based on depletions from available supply:
 - 51.75% Colorado
 - 23% Utah
 - 14 % Wyoming
 - 11.25% New Mexico
 - + 50kaf to Arizona
- Establishes the Upper Colorado River Commission with representatives from Colorado, New Mexico, Utah, Wyoming and U.S.
- Collaboration among the Upper Division States to address shared risks, obligations and opportunities
- Resolved uncertainty among Upper Division States PRIOR to additional development

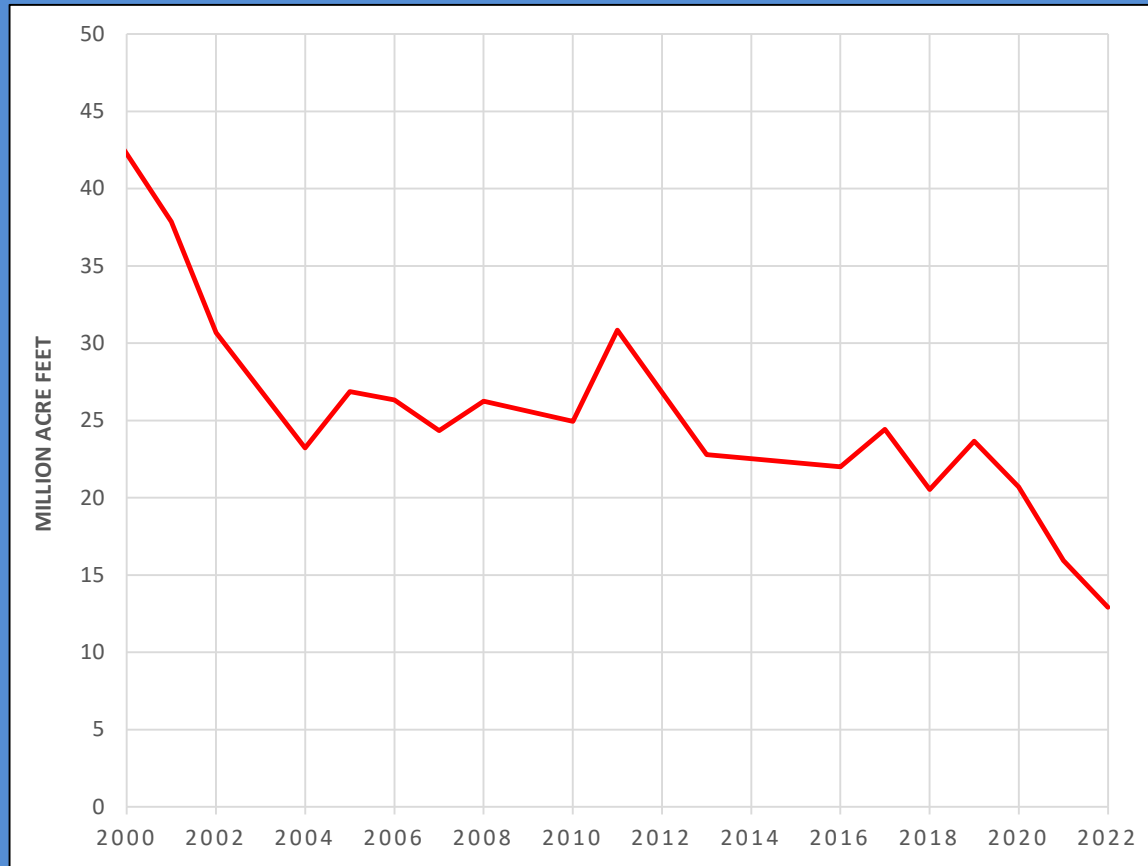


The Upper Basin



W:\480760 CRBS P2\GIS\Mapfiles\Chapter_Figs\March2015_edit\figure_1-1_v3.mxd theyeda 3/20/2015

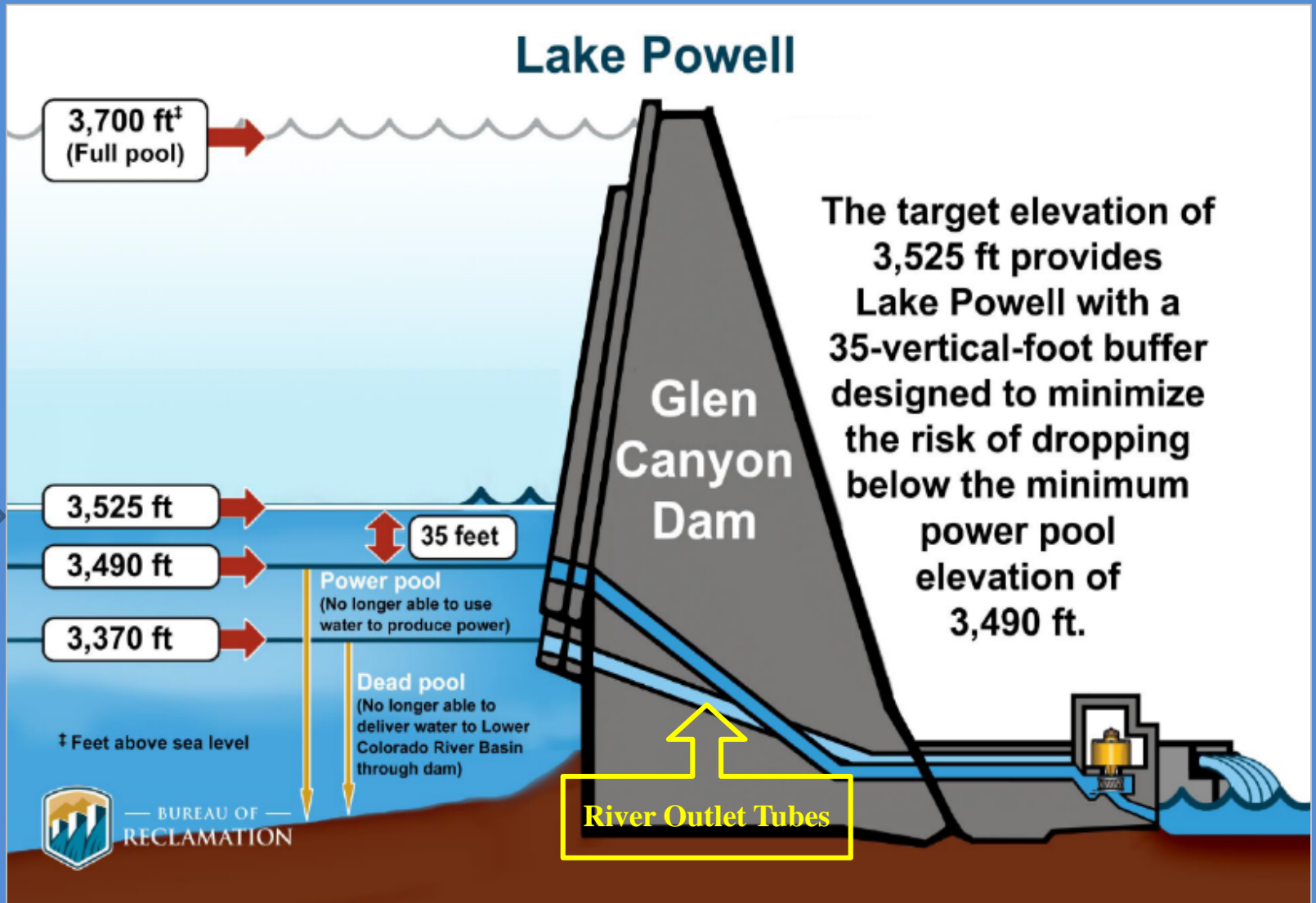
The Problem: Depleting our Savings Account



Combined End-of-Year Storage in Lake Powell and Lake Mead since 2000

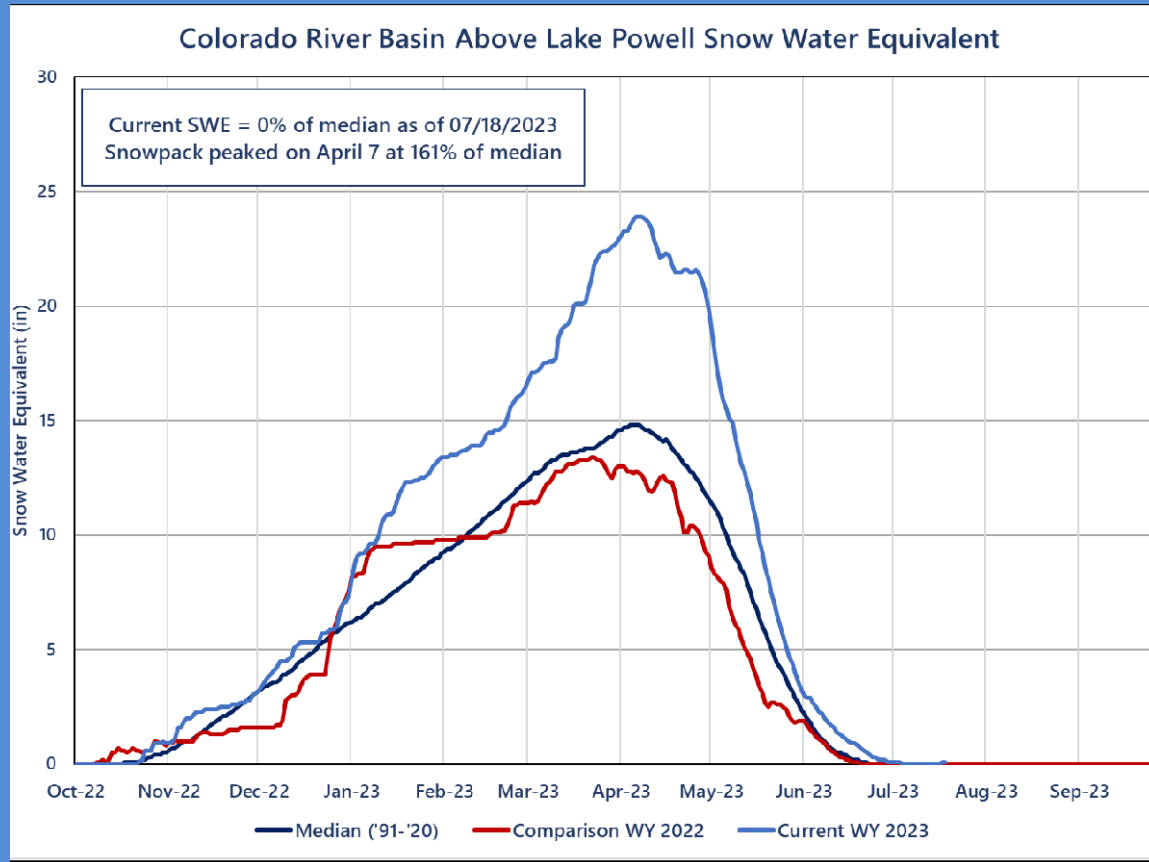


Lake Mead – 2015



Cross Section of Glen Canyon Dam

The Reprieve



Courtesy of USBOR

Upper Basin Snowfall in the winter of 22-23 alleviated the immediate crisis.

Upper Basin - Lower Basin

Key Differences

- Supply Dominated vs Entitlement/Storage Dominated
 - Upper Basin relies on annual runoff
 - Lower Basin relies on storage - uses downstream of Lake Mead
- Complicated and distributed vs Simple and concentrated
 - Upper Basin = 10,000 + turnouts in 4 states
 - Lower Basin ~30 turnouts (mainstem) in 3 states + Mexico
- Depletion accounting vs CU accounting
 - Upper Basin accounts for depletions, CU and Losses
 - $\text{Evaporation} + \text{Losses} + \text{CU} = \text{Depletions}$
 - Lower Basin accounts ONLY for CU
 - $\text{Diversions} - \text{return flows} = \text{CU}$
 - Evaporation and losses occur in the Lower Basin
 - Lower Basin Mainstem + Mexico depletions (CU + Evap/Losses) routinely 2x Upper Basin
 - Lower Basin + Mexico depletions > 9.0 MAF/yr
 - Upper Basin < 4.5 MAF/yr





Colorado River Basin Water Use in New Mexico

- Upper Colorado Basin in NM
- Upper Colorado Basin
 - NM apportionment is 838,125 af/yr pursuant to the two compacts
 - Use often limited by water supply
 - Current average around 410,000 af/yr
 - Potential up to 642,000 af/yr by 2070
 - Most of the increase will come from tribal water development
- Lower Colorado Basin
 - Includes the Gila/San Francisco and Little Colorado subbasins
 - Gila water use is limited by two decrees
 - Little Colorado water use is limited by water supply
 - In total, average use less than 40,000 af/yr.

San Juan Basin of NM

showing Navajo Reservoir, NIIP, San Juan Chama Project, Animas La Plata Project, and NGWSP Pipelines



Estimated Consumptive Use of Upper Basin Water in New Mexico

Averages (acre-feet per year) 2011-2017	
1. NIIP	182,000
2. San Juan-Chama	85,500
3. Non-NIIP Agriculture	57,700
4. Power	39,700
5. Evaporation	26,700
6. Municipal	10,500
Total average currently used	410,300

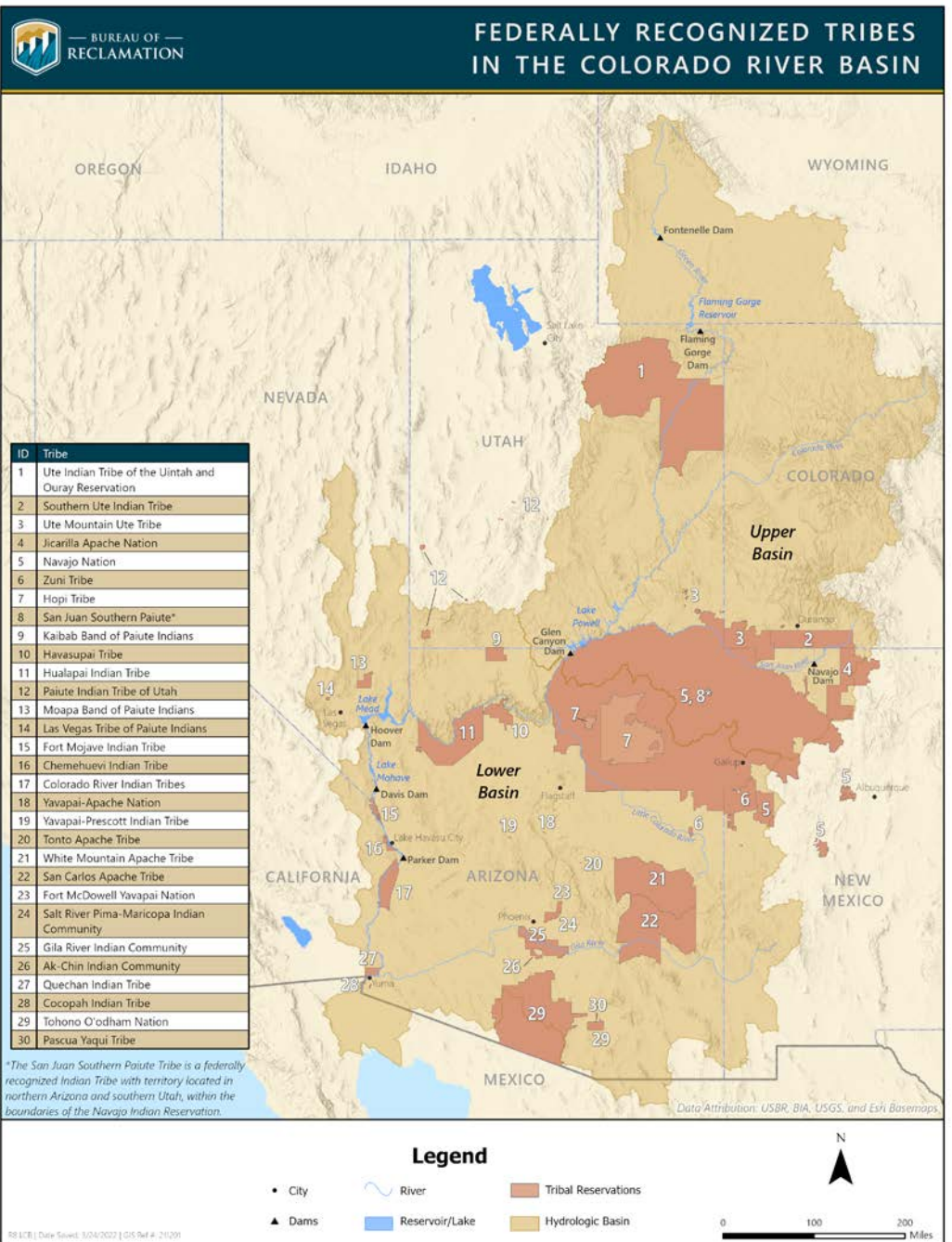
Shortages on the San Juan Chama Project (2012-2021)

Year	Allocation(AF)	% Allocation
2012	96,200	100.0%
2013	96,067	99.9%
2014	85,496	88.9%
2015	89,300	92.8%
2016	92,500	96.2%
2017	96,200	100.0%
2018	86,000	89.4%
2019	96,200	100.0%
2020	78,000	81.1%
2021	63,000	65.5%

Navajo Reservoir to Lake Powell



Federally Recognized Colorado River Tribes



Questions

