

# Bernalillo County Behavioral Health Initiative

---


LFC PRESENTATION



## 2014 Ballot Question

---

“Are you in favor of the Bernalillo County Commission establishing a one-eight percent gross receipts tax to be used for the purpose of providing more mental and behavioral health services for children in the Albuquerque and Bernalillo County Area, to provide a safety net system that develops a continuum of care not otherwise funded in New Mexico.”



# About the Initiative

---

ABCGC, the joint city-county commission, addresses matters that impact both governments and is where proposed behavioral health projects are discussed and vetted.

Using information from several reports, taskforces the following priorities and working subcommittees were identified:

- (1) Crisis Services; (2) Community Supports;**
- (3) Housing; (4) Prevention, Intervention and Harm Reduction.**



# About the Committees

---

## Subcommittees:

- Will **review** project proposals provided by City and County staff
- Will debate proposals' relevance and need, target populations, and desired outcomes
- May request clarification, expert testimony, etc.
- May make add recommendations of the committee on implementation
- Will **recommend** project proposals to the Steering Committee/ABCGC that the committee believes should be funded

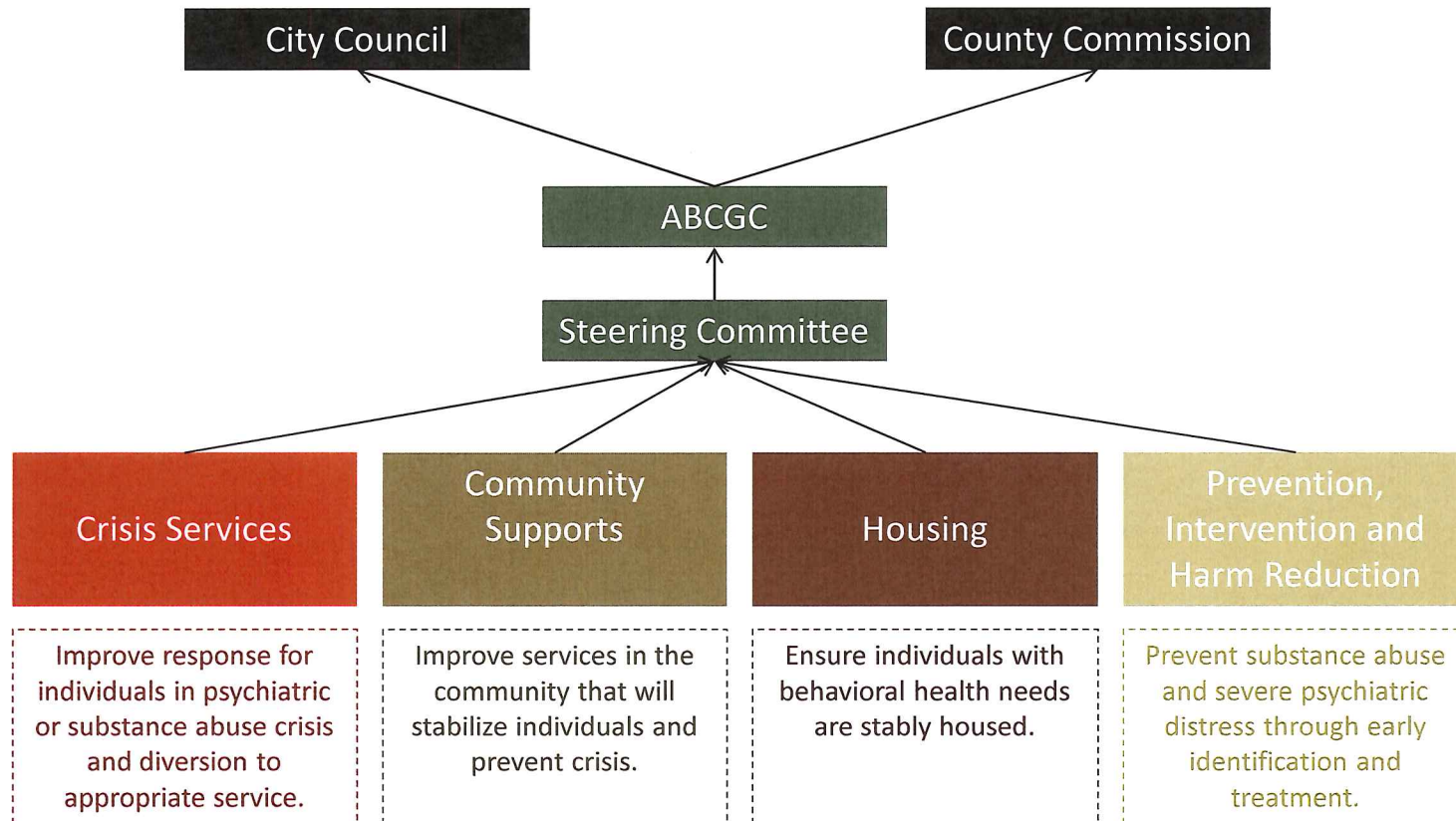
Subcommittees are composed of experts and community members. The goal is to strive for **collaboration and consensus building**.

Subcommittees are not making final funding decisions or vetoing projects.

Subcommittee members will not have conflicts of interest (ie, will not bid on procurements that result from this process).




# ABCGC Subcommittee Structure and Goals




# Behavioral Health Initiative Progress

---

- Community Connections Re-entry Supportive Housing Program
  - Reduction of Adverse Childhood Experiences Project
  - Youth Transitional Living Proposal
  - Community Engagement Teams
  - Mobile Crisis Teams
  - Expansion of Community Connections Supportive Housing Program
  - MDC Transition Planning, Re-entry Resource Center
  - University of New Mexico's Institute for Social Research
  - Behavioral Health Advisor
- 

# Collaboration with the City of Albuquerque

---

- Redundancy Study
  - Common terminology
  - City/County task force
  - Community outreach
  - Small working group
  - Albuquerque, Bernalillo County Governing Commission
  - Community Connections
  - Mobile Crisis Teams
  - Single site supportive housing
- 

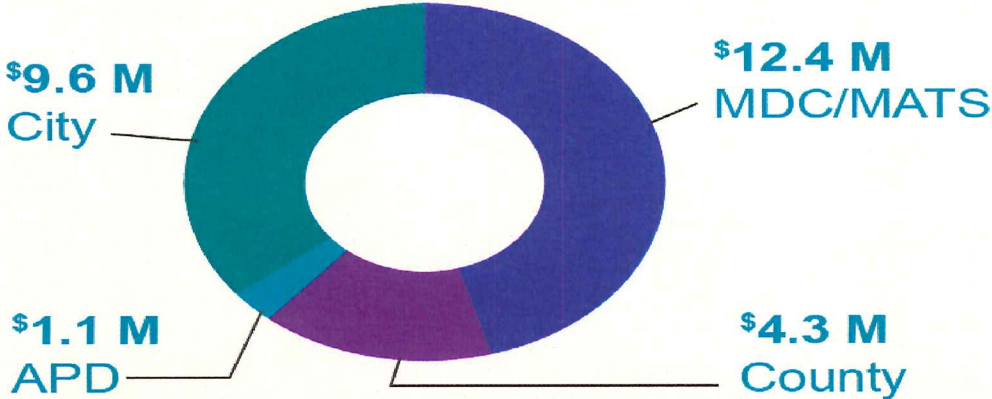
**FY16**

**CITY & COUNTY**

**Direct Expenditures on Behavioral Health**

**\$27 Million**

More than \$27 Million dollars was spent on behavioral health programs between the City & the County during FY16.



**51 Partners**  
22 City | 29 County





# Collaboration with the University of New Mexico

---



- **Small Working Group- Stakeholders for the Behavioral Health Initiative**
- **Mental Health First Aid Training**
- **Suicide Training & Prevention**
- **Medical Respite**
- **Adolescent Substance Abuse Treatment**
- **The Public Inebriate Intervention Program (PIIP)**
- **Detox Program**
- **The Assessment Center**
- **Addiction Treatment Program (ATP)**
- **Supportive After Care Program (SAC)**
- **Mariposa Residential Program**
- **Renee's Project Supportive Housing Program**
- **Pathways Program**
- **UNM ISR**

- The ISR provides evaluation research, basic applied research, training, and technical assistance.
- Ongoing relationship with Bernalillo County, the MDC and PSU going back to the 1990s.
- Familiar with criminal justice system, behavioral health, medical system, and community.

# High-Frequency Utilizer Study

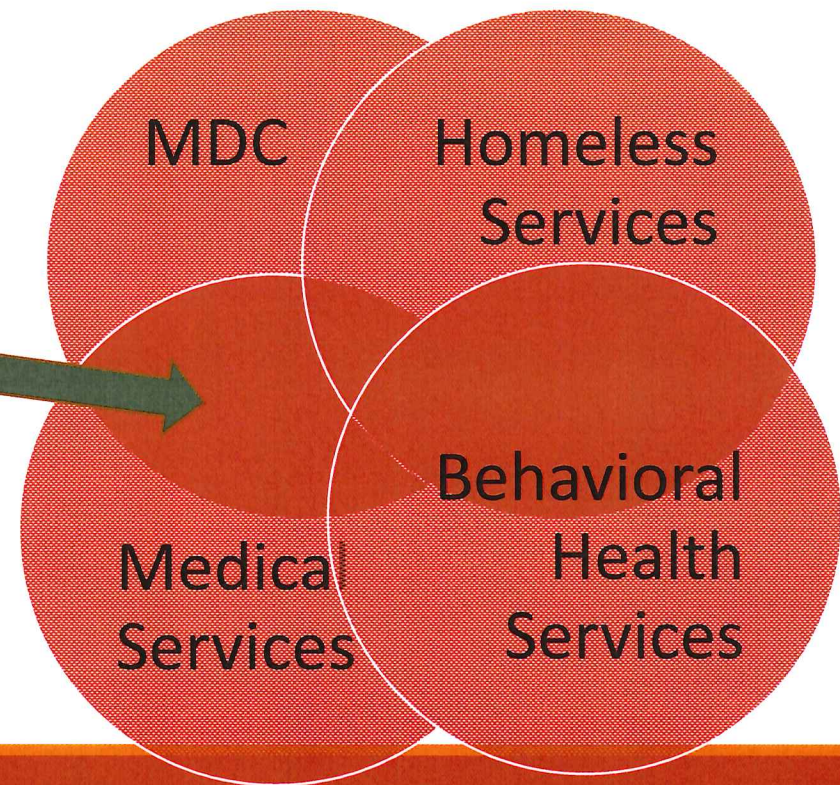
---

## Objective:

Identify the population that most frequently uses medical, housing, behavioral health and criminal justice resources

## Goals:

- Describe the population at highest need
- Tailor appropriate interventions
- Identify referral mechanisms



# Traditional Procurement:

---

- Is often designed to ensure compliance with regulations, promote competitive bidding, transparency, diversity and ethical conduct.
- Often uses documents are often overly prescriptive, attempting to detail every potential specification, constraining a vendors ability to bring innovative ideas to the table.
- Can be challenging to utilize when solutions are unknown, difficult to describe, or may not yet exist.

## Problem-Based Procurement:

---

- Begins with a concise, engaging statement of the problem to be solved
  - Allows for much more interaction & engagement between the vendor community and the purchasing body
  - Helps ensure that staff do not get so bogged down in a proposal's details that they lose sight of the outcomes the procurement is intended to achieve.
- 