

# FOOD & AG UPDATE 2024

Water and Natural Resources Committee  
July 23, 2024

Jason S. New  
Division Director, Marketing and Development

**NMDA**

---

NEW MEXICO DEPARTMENT OF AGRICULTURE

# NM AGRICULTURE—Industry at a Glance

## \$4.3 Billion

*Agriculture sector output from New Mexico totaled \$4.33 billion, up 24% from 2021*

*Crop and livestock product sales in 2022 totaled \$3.71 billion, up 17% from 2021*

## 21,000 Farms

*There are 21,976 farms, a 16% decrease from the 2017 census.*

*Average Farm size 1865 acres, up 15% from 2017 census (Note: 33% of farms <9 Acres; 53% of farms < 53 acres)*

*95% of all NM farms and ranches are family owned.*

## Land 39 million

*Land in farms, 39,128,563 million acres, a 4% decrease from the 2017 census*

*Top 5 crops in acres (Harvested) are: Hay/Haylage (No. 1 at 352K; Wheat grain(No. 2 at 97k acres); Corn, silage(No. 3 at 83k); Pecans (No. 4 at 60K ); and, Sorghum , grain (No. 5 at 39K)*

## Cattle Country

*Cattle and calves totaled 1.3 million head as of January 1, 2023; down 80k head from 2022.*

*Milk cow inventory was 4.5% lower than the previous year at 279,000 head.*

*Beef cow inventory was 1.5% lower than previous year at 446,000 head*

## Ranking in U.S.

*New Mexico's top commodities/products (rankings in the U.S.):*

*Chile Peppers (No. 2)  
Pecans (No. 2)  
Cheese (No. 4)  
Onions (No. 5)  
Milk (No. 9)*

*Rated second-most favorable industry in the state, according to a survey by The Garrity Group*

# NMDA

New Mexico Department of Agriculture

## 2022 NM Ag Statistics

- Collaborative effort between the United States Department of Agriculture's (USDA) National Agricultural Statistics Service (NASS) and the New Mexico Department of Agriculture
- Annual publication which highlights the state's agricultural production
- Statewide and county by county data

## 2022 NEW MEXICO Agricultural Statistics



An aerial photograph of a long, concrete dam stretching across a valley. The dam has a series of small, decorative pillars along its top edge. The water behind the dam is calm and reflects the sky. The surrounding landscape is arid, with brown, rocky hills and sparse vegetation. The sky is clear and blue.

NMDA

# Challenges in New Mexico

---

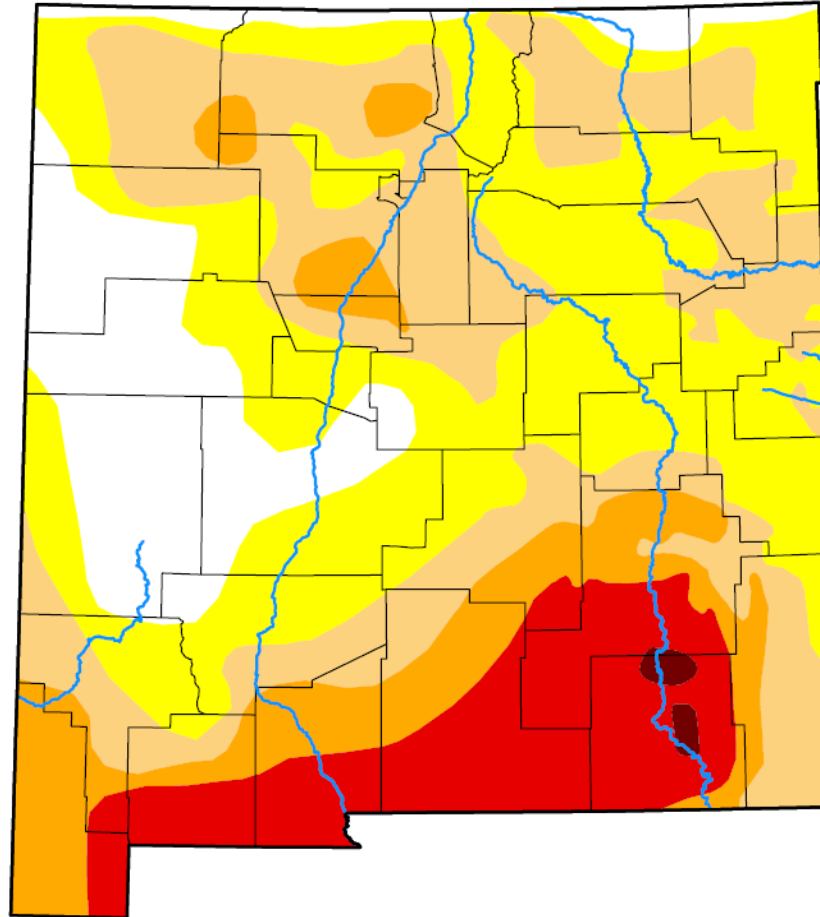
NEW MEXICO DEPARTMENT OF AGRICULTURE

# Current Drought Monitor Map

- Takeaway: **Drought is forecast to persist** across New Mexico and much of the West.
- NMDA participates in the New Mexico Drought Monitor Work Group, along with the state climatologist, OSE, EMNRD, and federal agencies.
- The work group meets monthly to provide data and input to the U.S. Drought Monitor.

## U.S. Drought Monitor New Mexico

**July 9, 2024**  
(Released Thursday, Jul. 11, 2024)  
Valid 8 a.m. EDT



Drought Conditions (Percent Area)

	None	D0-D4	D1-D4	D2-D4	D3-D4	D4
<b>Current</b>	14.40	85.60	51.64	24.33	12.69	0.43
<b>Last Week</b> <i>07-02-2024</i>	12.19	87.81	56.66	24.33	12.69	0.43
<b>3 Months Ago</b> <i>04-09-2024</i>	3.53	96.47	74.85	35.67	16.24	3.51
<b>Start of Calendar Year</b> <i>01-02-2024</i>	0.71	99.29	94.04	79.22	38.39	6.48
<b>Start of Water Year</b> <i>09-26-2023</i>	0.00	100.00	96.87	67.52	32.31	6.85
<b>One Year Ago</b> <i>07-11-2023</i>	58.71	41.29	18.25	6.41	0.00	0.00

Intensity:



The Drought Monitor focuses on broad-scale conditions. Local conditions may vary. For more information on the Drought Monitor, go to <https://droughtmonitor.unl.edu/About.aspx>

Author:

Brian Fuchs  
National Drought Mitigation Center



[droughtmonitor.unl.edu](https://droughtmonitor.unl.edu)

Source: US Drought Monitor  
(National Drought Mitigation Center/USDA/NOAA)

# Current Reservoir Levels

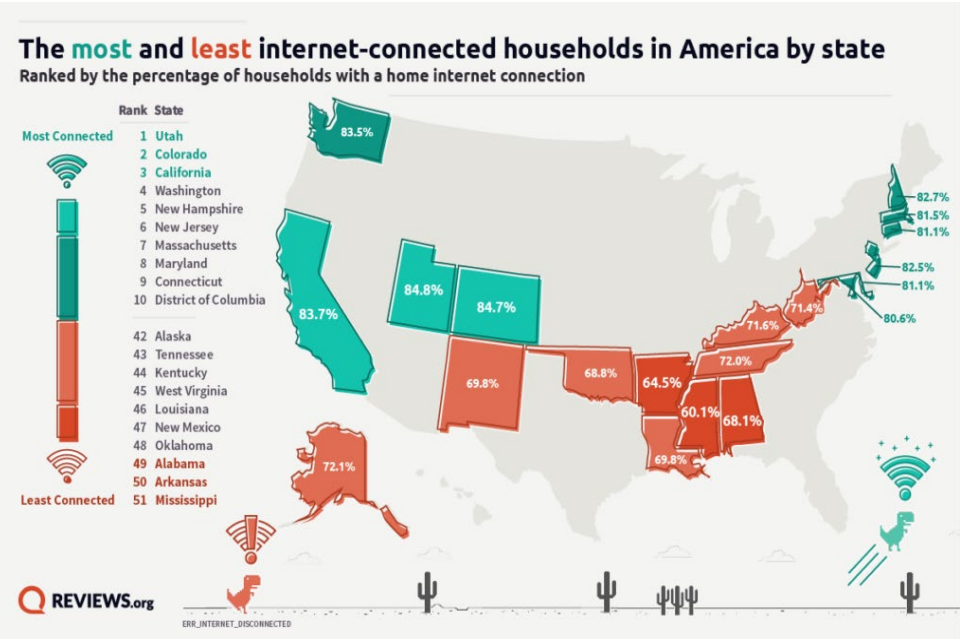
- This table is from OSE and includes data from the U.S. Army Corps of Engineers and USDA’s Natural Resources Conservation Service.
- Takeaway: Reservoir storage levels remain low on the Rio Grande.
- Surface water supplies will depend on winter snowpack.

Reservoir Storage Volumes in New Mexico - June 2024				
RESERVOIR	CURRENT	LAST YEAR	MEDIAN	PREVIOUS MONTH
NAVAJO	1255	1340	1485	1191
CONCHAS	123	136	121	125
UTE	153	176	178	156
SANTA ROSA	8	64	63	9
SUMNER	12	18	25	24
BRANTLEY	25	20	24	13
HERON	139	120	260	119
EL VADO	2	5	139	5
ABIQUIU	89	230	166	86
COCHITI	45	96	50	44
ELEPHANT BUTTE	371	521	594	454
CABALLO	42	52	62	50
<b>Units are in Thousands of Acre-Feet</b>				

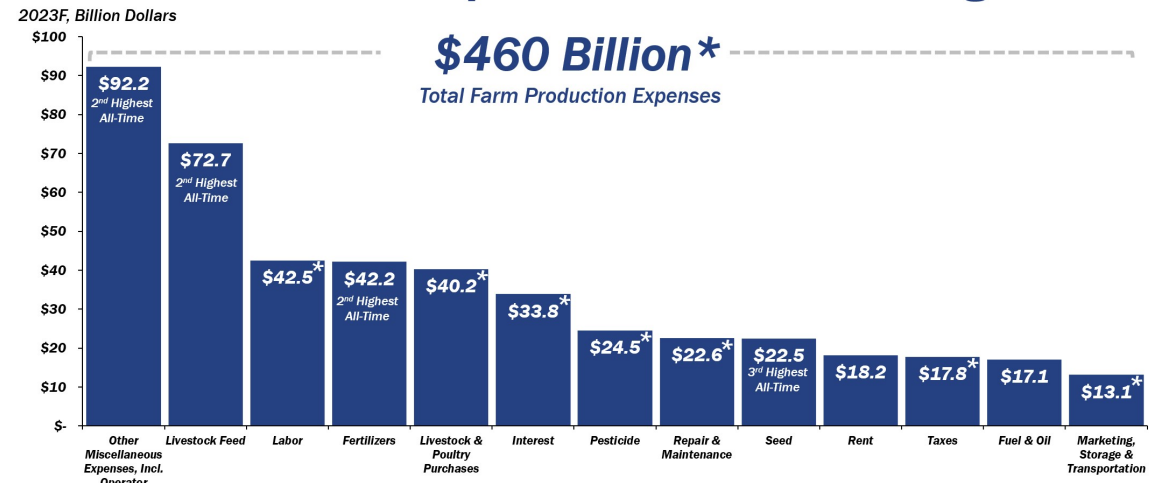
Source: US Drought Monitor  
(National Drought Mitigation Center/USDA/NOAA)

# Other Significant Challenges

- Labor
  - 19% hire farm labor
- Broadband
  - 70% of farms have internet access
- Farm Production Costs
  - State Total \$2.5B
  - Per Farm Average \$121K
- Rural Vet Shortage



## Farm Production Expenses Are Record-High



SENATE AG COMMITTEE  
Senate Ag Committee Republicans  
Senate Ag GOP Analysis, USDA Economic Research Service

\*Indicates A Record High

NMDA

# Opportunities in New Mexico

NEW MEXICO DEPARTMENT OF AGRICULTURE





# Total and Farm Overview, 2022, percent change since 2017

## Total:

- Market value of products sold \$2.9B, up 14%
- Farm-related income \$130M, up 104%

## Per Farm Average:

- Market value of products \$141K, up 36%
- Farm-related income \$31K, up 27%

## Farm Direct Sales

- Sell direct 10.8%, up 2.3%

*(Note: Direct to consumer + Retail+ Institutions+ food hubs+ Value-added)*



# Food Initiative-

To further enhance the state's food supply chain, NMDA received the following *USDA grants*:

- \$ 4.6 million, *USDA Resilient Food Systems Infrastructure Cooperative Agreement (RFSI)*.
- \$6.3 million, *USDA Local Food Purchase Assistance Cooperative Agreement (LFPA)*

For 2024, NMDA received reoccurring appropriations to serve as fiscal agent and strategic partner for the following food initiatives:

- \$633,000 *SNAP Double Up Food Bucks* (Note: Almost \$1M with original/founding appropriation)
- \$200,000 *Approved Supplier Program*
- \$167,000 *Administrative FTEs*

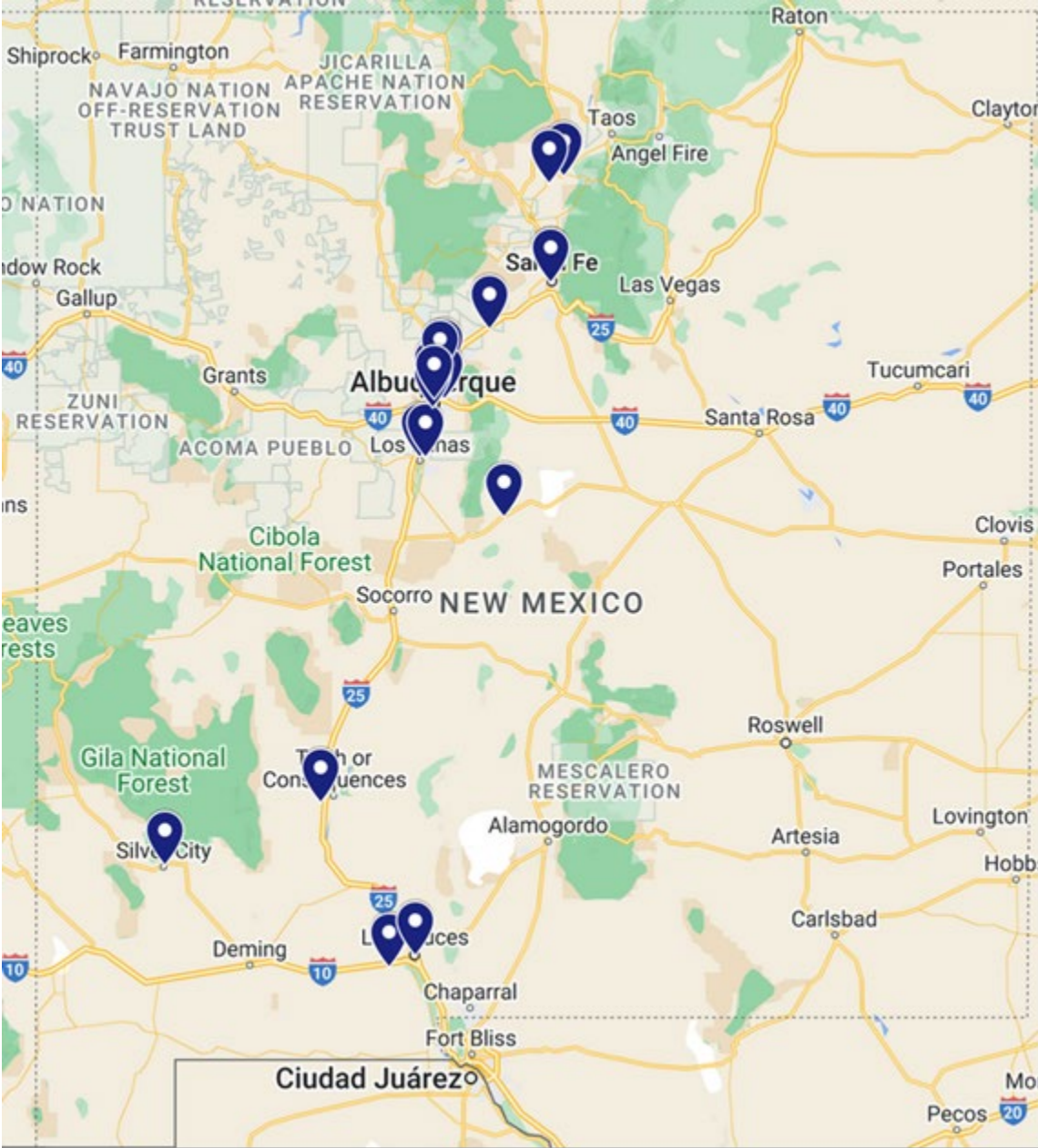


GOVERNOR MICHELLE LUJAN GRISHAM  
**FOOD INITIATIVE**  
CULTIVATING A NEW FOOD SYSTEM

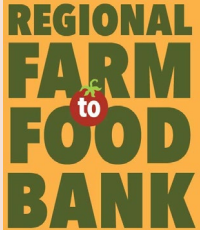


# Resilient Food Systems Infrastructure (RFSI)

- Cooperative Agreement between NMDA and USDA-AMS
- One-time Funding
- Partnering with NMEDD on value chain coordination activities and technical assistance component
- Program duration 4 years (Ends 2027)
- \$1M for Equipment Only Proposals
- \$2.7M for Full Infrastructure Proposals
- 18 Projects proposed to USDA:
  - 12 Equipment Only (no match component)-- refer trucks/vans, blending and fermentation tanks, walk-in coolers, washers, baggers, kettles, freeze dryers, dehydrators, millers, presses, shellers, etc.
  - 6 Full Infrastructure-- match component
    - 1 Distribution Project
    - 2 Capacity Expansion Projects for Aggregating and Processing
    - 2 Incubator Projects
    - 1 Aquaponics Project



# Food Initiative- Regional Farm to Food Bank Program



- LFPA- Cooperative agreement between and NMDA and the USDA- AMS.
- Program duration 4 years (Ends June 2025)
- Food procurement managed by the New Mexico Association of Food Banks to purchase locally and regionally produced foods to distribute to New Mexicans in need.
- Food safety component managed by the New Mexico Farmers' Marketing Association Approved Supplier Program
- \$2 million spent to-date for food banks (\$967K or 62% on meat)
- Expenditures on pace for 100% utilization
- Values based procurement

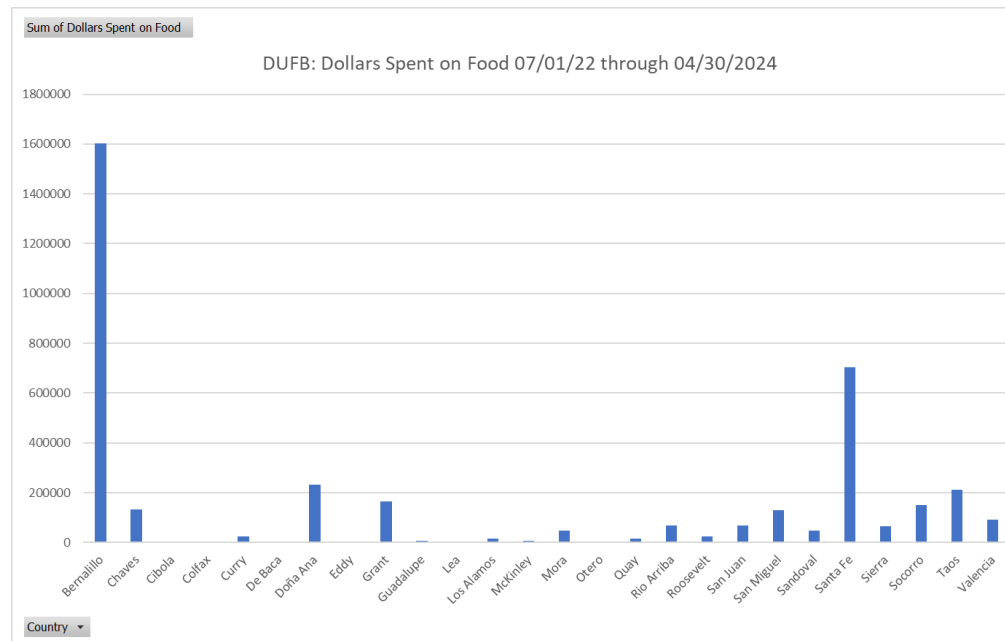
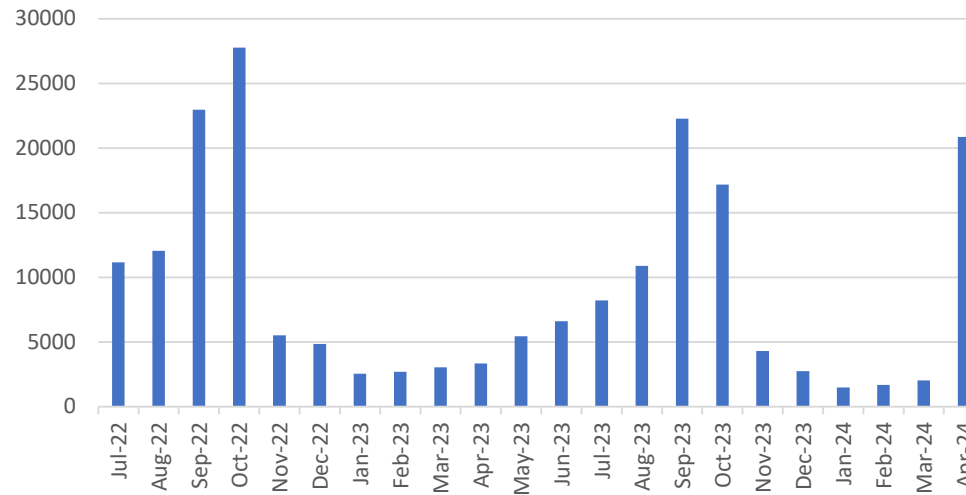


# Food Initiative- Double Up Food Bucks



- Managed by the New Mexico Farmers' Marketing Association
- When use SNAP-EBT Card, Double Up matches your fruit and vegetable purchases dollar for dollar.
- SNAP-EBT Card holders are automatically eligible for Double Up Food Bucks.
- Funding/Expenditures:
  - FY23 \$1.55 million/\$1.55 million
  - FY24 \$1 million/\$679K (*to-date, expect 100% utilization*)
- Average monthly participants:
  - FY23- 8,998 participants
  - FY24- 9,163 participants

Double Up Food Bucks: People Receiving Food Per Month



# Thank You

Jason New

Division Director, Marketing and Development Division

Email: [jnew@nmda.nmsu.edu](mailto:jnew@nmda.nmsu.edu)

Phone: 575.646.4929

---

NEW MEXICO DEPARTMENT OF AGRICULTURE