

Energy, Minerals and Natural Resources

OUR MISSION: to position New Mexico as a national leader
in energy and natural resource management.

WATER AND NATURAL RESOURCES INTERIM COMMITTEE– OCTOBER 3, 2023

KEVIN MYERS, HYDROLOGIST – MINING AND MINERALS DIVISION





Water Data Initiative



- Participation Since July 2019
- All Divisions
- Planning and Learning
- Funding starts July 2023

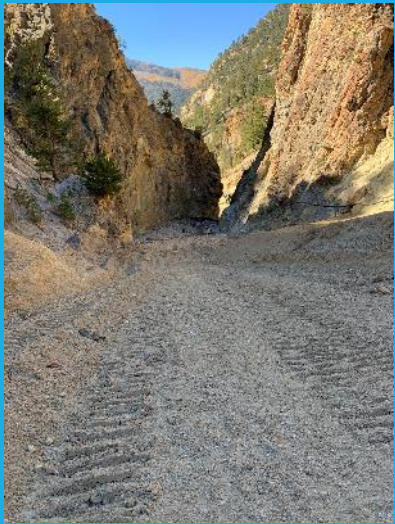


FY24 Goals

Our APIs will be public-facing and have geospatial capabilities.

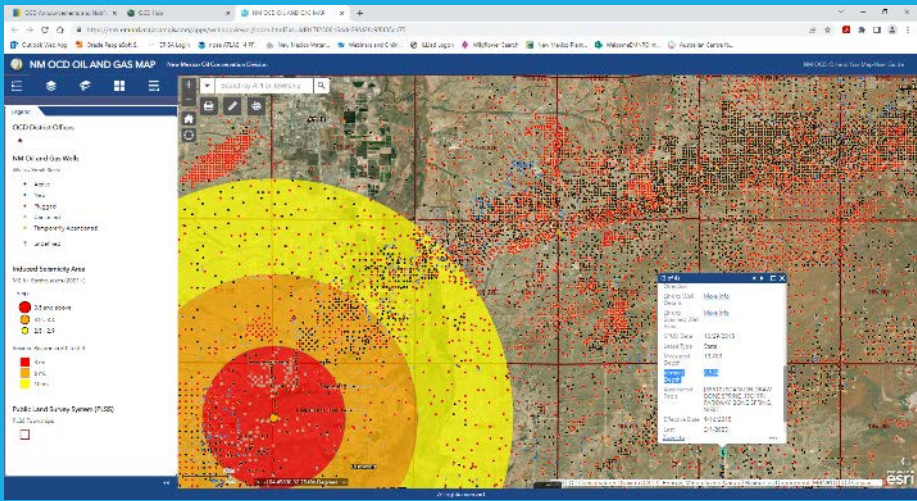
- Hire IT Application Developer II
- Interagency Communication
- Coal Water Quality data more API- accessible
- Ask for Another ITO position

Challenges



- New Non-WDI Demands
- Partial Funding
- Historic Data





Success Story

- Induced Seismicity 2022
- Water Use 2020
- Automated Data Feeds OCD

OCD Permitting - Water User Rep: x

https://wwwapps.emnrd.nm.gov/ocd/ocdpermitting/Reporting/Wel...

Outlook Web App Oracle PeopleSoft S... ERISA Login noaa ATLAS 14 PF... New Mexico Water...

New Mexico Oil Conservation Division Water Use Report Summary [Thursday, April 20, 2023]

Year	Month	Produced Water	TDS < 1K mg/L	TDS 1-10K mg/L	TDS > 10K mg/L	Total Water
2023	1	684,922,014	170,352	188,274,899	51,533,469	924,900,734
2023	2	550,955,874	11,016,884	257,733,179	-	819,705,737
2023	3	32,207,742	45,024,440	25,317,221	-	102,549,403
2023	4	-	19,166,849	-	-	19,166,849
Total:		1,268,085,630	75,378,325	471,325,299	51,533,469	1,866,322,723
2022	1	954,859,579	18,022,654	534,926,200	86,405,939	1,574,214,372
2022	2	788,806,243	31,806,934	470,491,748	212,498,513	1,503,403,438
2022	3	1,160,535,431	56,188,204	342,018,954	159,910,107	1,720,652,696
2022	4	1,288,938,318	54,726,308	229,141,509	82,406,423	1,655,215,558
2022	5	588,897,029	32,904,207	181,675,998	19,436,299	822,946,233
2022	6	787,620,206	69,227,296	186,831,888	40,849,180	1,084,528,370
2022	7	758,630,233	979,869	500,975,051	183,964,150	1,424,249,303
2022	8	1,122,843,395	67,873,055	361,820,824	288,570,768	1,840,708,172
2022	9	568,855,668	33,352,248	475,733,753	102,015,272	1,199,956,941
2022	10	1,040,108,158	54,173,532	130,567,258	79,814,155	1,304,663,103
2022	11	873,079,531	53,878,482	144,036,415	-	1,070,994,428
2022	12	813,820,183	16,750,818	78,545,433	-	707,116,414
Total:		10,566,963,854	491,246,607	3,634,564,631	1,215,873,836	15,908,648,928
2021	1	517,219,459	231,303,272	386,499,217	40,552,534	1,175,574,482
2021	2	404,533,185	128,909,445	507,359,223	53,715,909	1,094,507,745



EMNRD data feeds that may become part of our API implementation:

- Mining and Minerals Division
 - Coal Water Quality Data
- Oil Conservation Division
 - Produced Water Volumes
 - Injected & Disposed Water Volumes
 - Water Dispositions (related to oil and gas properties)
 - Recycled Water Volumes
 - Hydraulic Fracturing Volumes
 - Water Use Reports
 - Hydraulic Fracturing Chemical Disclosure
 - Daily Water Injection Reports for injection wells affected by induced seismicity
 - Remediation related Water Quality Test Reports (C-141)
 - Groundwater abatement plan associated water data
 - Discharge permit associated water data
- State Parks
 - Weekly Reservoir Water Level Data (from USACE and/or BOR)
- And more.



THANK YOU