



# NMDOH Facilities Update

## LHHS Committee

Patrick Allen, Secretary of Health

George Morgan, Director, Facilities Management Division

Kenneth Shull, Administrator, NM Vets Home

Tim Shields, Administrator, NMBHI

# Agenda

1. Facility Overview and Service Lines
2. Facility Finance, Staffing, and Census
3. Vets Home Update
4. Questions

# Facility Overview and Service Lines

# NMDOH Facilities Overview: Treatment & Long-Term Care

## Skilled and Long-Term Care

- The Meadows at NM Behavioral Health Institute (NMBHI)
- Fort Bayard Medical Center (FBMC)
- New Mexico State Veteran's Home (NMVH)

## Physical Rehabilitation

- New Mexico Rehabilitation Center (NMRC)

## Treatment for Substance Misuse

- New Mexico Rehabilitation Center (NMRC)
- Turquoise Lodge Hospital (TLH)

## Adolescent Residential Treatment Centers

- Sequoyah Adolescent Treatment Center (SATC)
- Care Unit at New Mexico Behavioral Health Institute (NMBHI)

## Mental Health Treatment

- NM Behavioral Health Institute (NMBHI)

## Habilitation for Intellectual & Developmental Disabilities

- Los Lunas Community Program



# Skilled and Long-Term Care: The Meadows at NM Behavioral Health Institute



Skilled nursing facility and long-term care community consisting of three neighborhoods Evergreen, Aspen and Juniper with 162 beds.

Culture change model- restores control over daily living to residents and transforms the long-term care medical model to one that nurtures the human spirit. Includes family, friends, and staff who work most closely with residents

## Services Include:

- 24-hour Nursing
- Activity Therapy
- Social Services
- Psychology/ psychiatry
- Occupational Therapy



# Skilled and Long-Term Care: Fort Bayard Medical Center (FBMC)



FBMC offers a full range of services areas including Short Term/Rehabilitation, Long Term Care and Memory Care for all resident neighborhoods and in our licensed Veterans Home

## 200 Licensed Beds

- 40 bed Veterans Unit
- 70 bed Memory Care Unit
- 72 bed Skilled/LTC Unit

Align business practices to ensure residents have individualized care and work to support providers with the resources and equipment they need to meet the care goals for each patient

## Services areas:

- Short Term/Rehabilitation
- Long Term Care and Memory Care
- Social Services
- Extensive activities and community involvement opportunities
- Extensive clinical and therapy services





# Skilled and Long-Term Care: New Mexico State Veteran's Home (NMVH)



New Small homes will be opening soon!

## Annex and Main Building Licensed Beds: 131

- 59 private rooms
- 36 Double rooms

## Annex and Small Homes Licensed Beds 131:

- 2 couple Rooms – Small Homes
- 70 Private Rooms- Small Homes
- 59 Private Rooms – Annex

The New Mexico State Veterans Home is an exclusive long-term care facility dedicated to the care and service of our nation's veterans, veterans' spouses or widows, gold star certain gold star parents, and members of reserve components of the us armed forces who meet the legal residence requirements.

## Services included:

- Rehabilitation Services- PT, OT, and SLP
- Religious and Spiritual Services
- 24-Hour Medical & Nursing services
- Specialty Care
- 365 Day Recreation & Activity Program



# Physical Rehabilitation: New Mexico Rehabilitation Center (NMRC)



NMRC is a Joint Commission accredited specialty hospital with CMS deemed status certifications

## Medical/ Physical Rehabilitation:

Most intensive level of 1:1 inpatient rehabilitation therapy available in the region. Providing therapy 3 hours a day 5 days a week. This includes physical therapy (PT), outpatient (OT) and speech therapy.

- Adult care for strokes
- Traumatic brain injuries
- Spinal cord injuries
- Hip and knee replacements, and other ortho impairments affecting daily functioning
- Motorcycle/ car accidents





# Treatment for Substance Misuse

## New Mexico Rehabilitation Center (NMRC)



### Inpatient Medical Detoxification:

8 bed inpatient unit

Complete withdrawal management care with licensed counselors, 24/7 nursing care

### Inpatient Residential Treatment:

28-day program for extended recovery options through daily programming with a multidisciplinary team approach

### Intensive Outpatient Program (IOP):

IOP supports a primary substance abuse diagnosis with a secondary mental health component

Integrated Dual Diagnosis Treatment (IDDT) model supporting individuals who require structure and support to achieve and sustain recovery while living in their community (flexible group therapy and individual counseling)



# Treatment for Substance Misuse

## Turquoise Lodge Hospital (TLH)



### Our Programs:

#### Intensive Outpatient (IOP)

- IOP services meet multiple times weekly and typically last 3-6 months

#### Inpatient Adult Detox

- Medical and Nursing care twenty-four hours per day, seven days a week in a hospital setting. The average length of detox stay depends on the individual. A medical detox typically lasts 5-7 days.

#### Inpatient Adult Rehab

- For those unsuccessful in managing relapse may benefit from a social rehabilitation program. Our social rehab program is about 18-21 days long.



### Clinical Team:

- Medical Psychiatric, Pharmacy, Nursing and Counseling staff with training and education in the field of addictions.

### Priority patients for services:

- Pregnant and parenting women, injecting drug users, and men & women in the process of regaining custody of their children.



# Adolescent Residential Treatment Centers

## Sequoyah Adolescent Treatment Center (SATC)



### 36 bed residential treatment center

SATC provides care, treatment, and reintegration into society for males ages 13-17 who have a history of violence, have a mental health disorder and who are amenable to treatment

- trauma-informed approach with a multidisciplinary team approach to treatment in a culturally sensitive environment to address the individual needs of each resident.

#### Services:

Treatment planning

Group and family therapy

Educational services

Speech and language therapy

Psychiatry

Medical/Dental Services

Individual therapy

Medication management

Social services

Therapeutic recreational activities





# Adolescent Residential Treatment Centers Care Unit at NMBHI



## CARE Unit (10 beds)

Licensed residential treatment facility for adolescent boys with problematic sexual behaviors (aged 13-17)

History of sexually harmful behaviors and a co-occurring mental illness

Safe, strength-based, non-punitive, structured, and supportive environment is essential for successful treatment.

Program design based on the premise that a significant number of these adolescents have themselves been victims of abuse and/or neglect

- Course of treatment is approximately 12 months,
- Family participation is encouraged
- A variety of treatment modalities are utilized

Services are reimbursed – however it is a small part of NMBHI with an average of 4 residents the past year



# Mental Health Treatment Behavioral Health Institute (NMBHI)



## Divisions:

- Forensic Division
- Adult Psychiatric Division
- CARE
- Long-Term Care (Meadows)
- Community Based Services
- Over 300 Acre campus – approximately 50 buildings

## FTE positions:

- Currently 595 Employees + approximately 30 contractors
- Up from approximately 520 two years ago

## Revenue

- Forensic – cannot bill Medicaid
- Adult Psych – minimal billing – about 10% of stay is covered
- Community Based Supports and CARE – bill but not set up to be self-sustaining without Medicaid
- Meadows – can bill for residents – mostly Medicaid





# Rehabilitation for Intellectual & Developmental Disabilities Los Lunas Community Program



CP is a **community provider** of living supports for persons with intellectual and developmental disabilities (IDD) aged 18 years and above.

## Our Services:

Supported Living offered at 21 homes in Valencia County

Intensive Medical Living Services (IMLS)

Customized Community Supports (CCS)

Community Integrated Employment (CIE)

Adult Nursing

Crisis Supports: short term behavioral support interventions for persons in acute crisis

CF/IID: licensed by DHI Health Facility Licensing & Certification operates a four-bed structured behavioral treatment program for criminal offenders and others with DD.





# Facility Finance, Staffing, Census

# Overall Projection for P006 – FY24



- Total Budgeted revenue is:
  - \$79,099,300 - General Fund
  - \$8,342,000 Federal
  - \$6,200,700 - Transfers
  - \$63,575,711 - Other
- Total Materialized and Projected Revenues:
  - \$79,099,300 – General Fund
  - \$9,646,1 - Federal
  - \$14,569,026 – Transfers (includes Land Grant) \*Usable \$6,195,700 per authority
  - \$63,758,179 - Other
- Total Materialized and Projected Expenditures: Incl. Encumbrance and Pre-encumbrance
  - \$75,623,831 – General Fund
  - \$9,035,533 - Federal
  - \$5,879,608 – Transfers
  - \$68,384,817 - Other
- Total Deficit W/O Excess Land Grant, Operating Budget only: **(220,460)**.
- Projections show a false surplus of \$8,148,867 which includes \$8,368,327 of Total Revenue with no authority to spend. \*majority from Land Grant
- Total Supplemental Used: \$8,931,555 \*ZI6024
  - 200s \$7,752,146
  - 400s \$1,965,119
- Total Supplemental Remaining \$1,550,535 \*ZI6024  
Total NMVH Special Remaining \$798,731 \*ZI5043
  - 200s \$924,254
  - 400s \$626,281

# HB2:



## Facility Supplementals and Deficiencies

**\$11,267,800** For shortfalls in the facilities management program in fiscal year 2024.

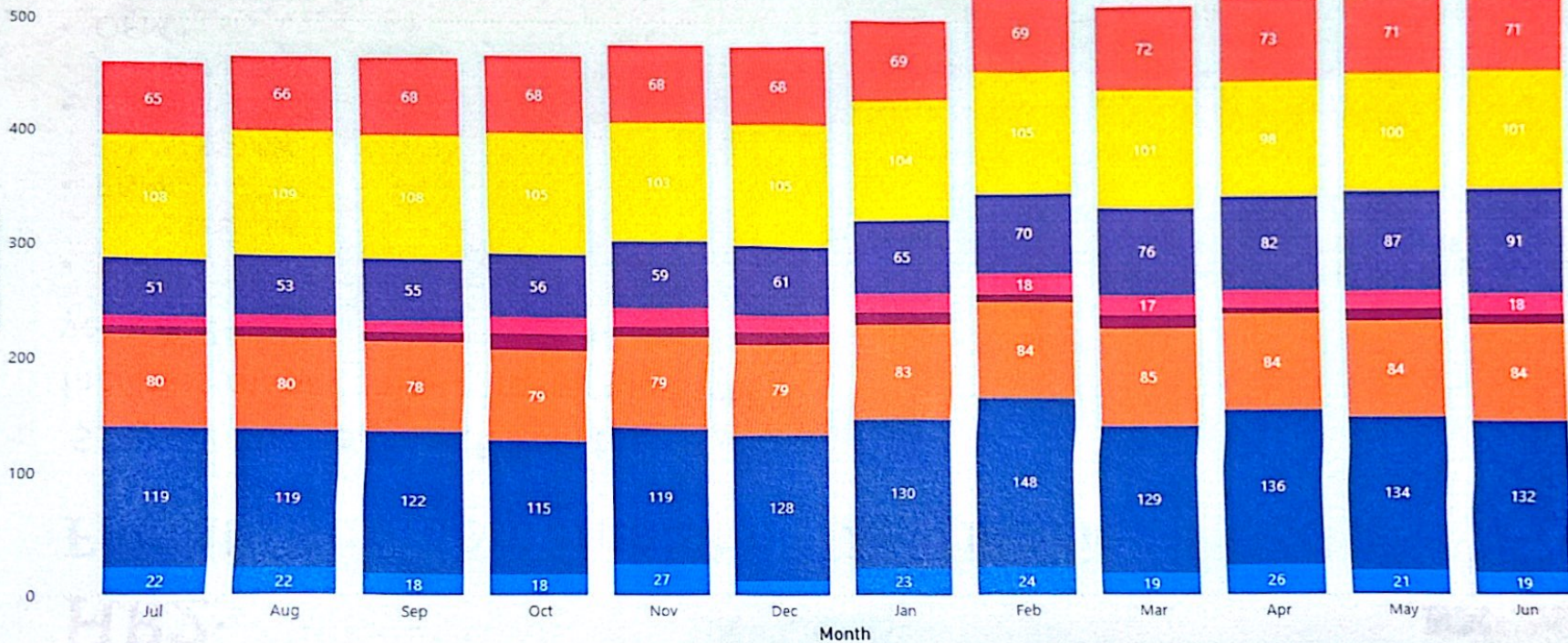
- NMBHI
  - \$6,580,300
- FBMC
  - \$1,090,696
- LLCP
  - \$2,762,350
- OFM
  - \$834,454





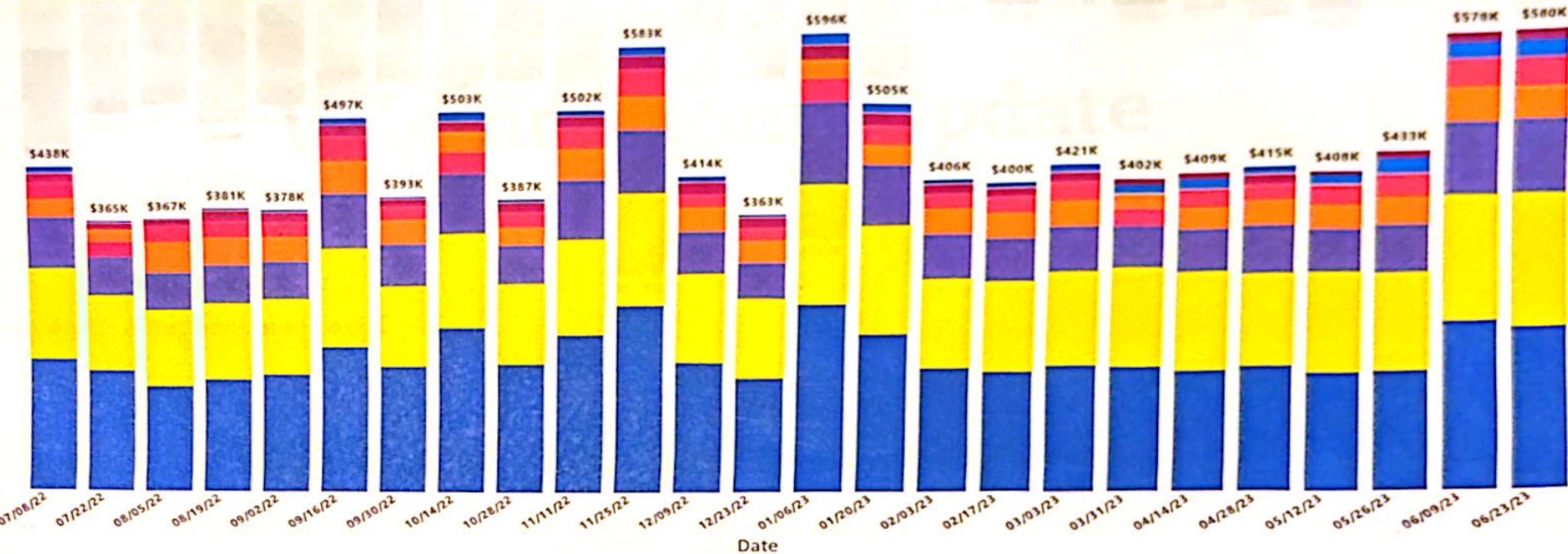
# NM Department of Health: Facilities Census by Facility and Month

Facility ● TL ● NMBHI ● NMBHI - Meadows ● NMRC ● SATC ● NMSVH ● FBMC ● LLCP



# Overtime Stacked Bar Chart - FY23

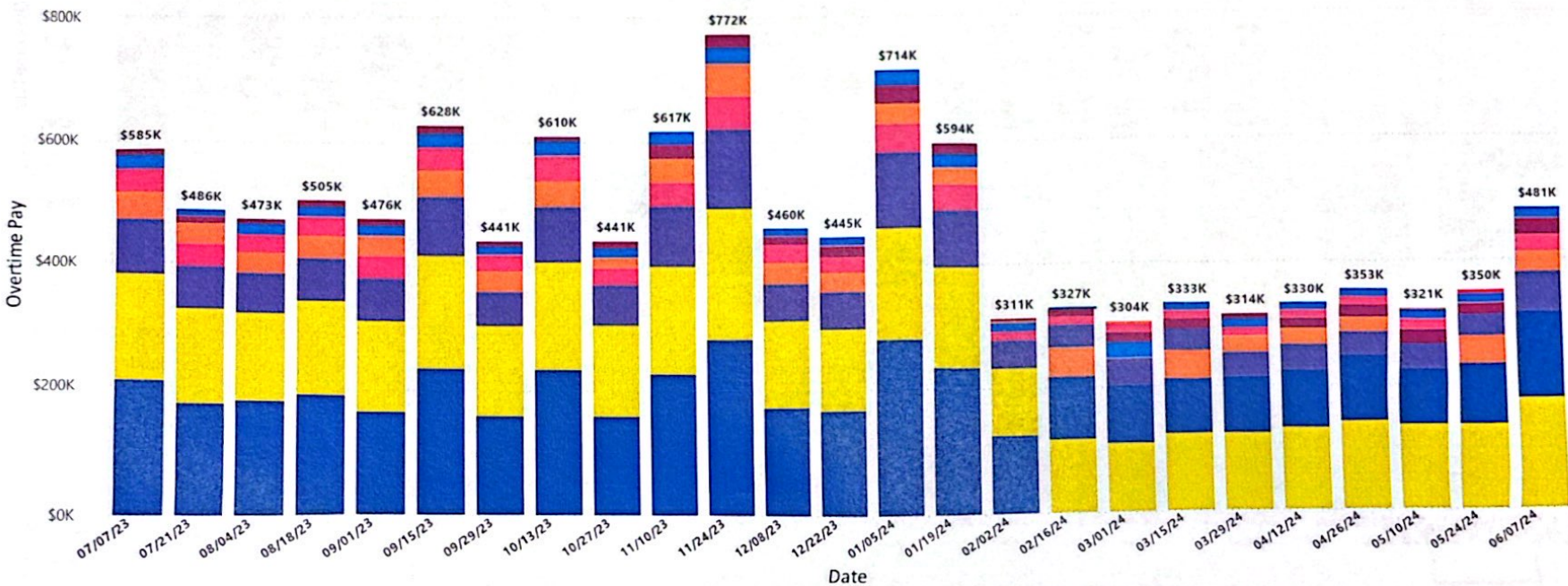
TL NMBHI NMRC SATC NMVH FBMC LLCP





# Overtime Stacked Bar Chart – FY24

Facilities: TL NMBHI NMRC SATC NMVH FBMC LLCP





## Veterans Home Update

## Vets Home Update

- Partial Substantial Completion Scheduled for July 19, 2024 – this includes Small Homes but excludes water system design and construction.
- Final Substantial Completion Scheduled for September 20, 2024 – inclusive of all design and construction project deliverables.
- Occupancy:
  - Homes #3 and #4 – Monday, August 5, 2024
  - Homes # 5 and #6 – Monday, August 19, 2024
  - Homes #1 and #2 – Monday, September 2, 2024

## QUESTIONS?