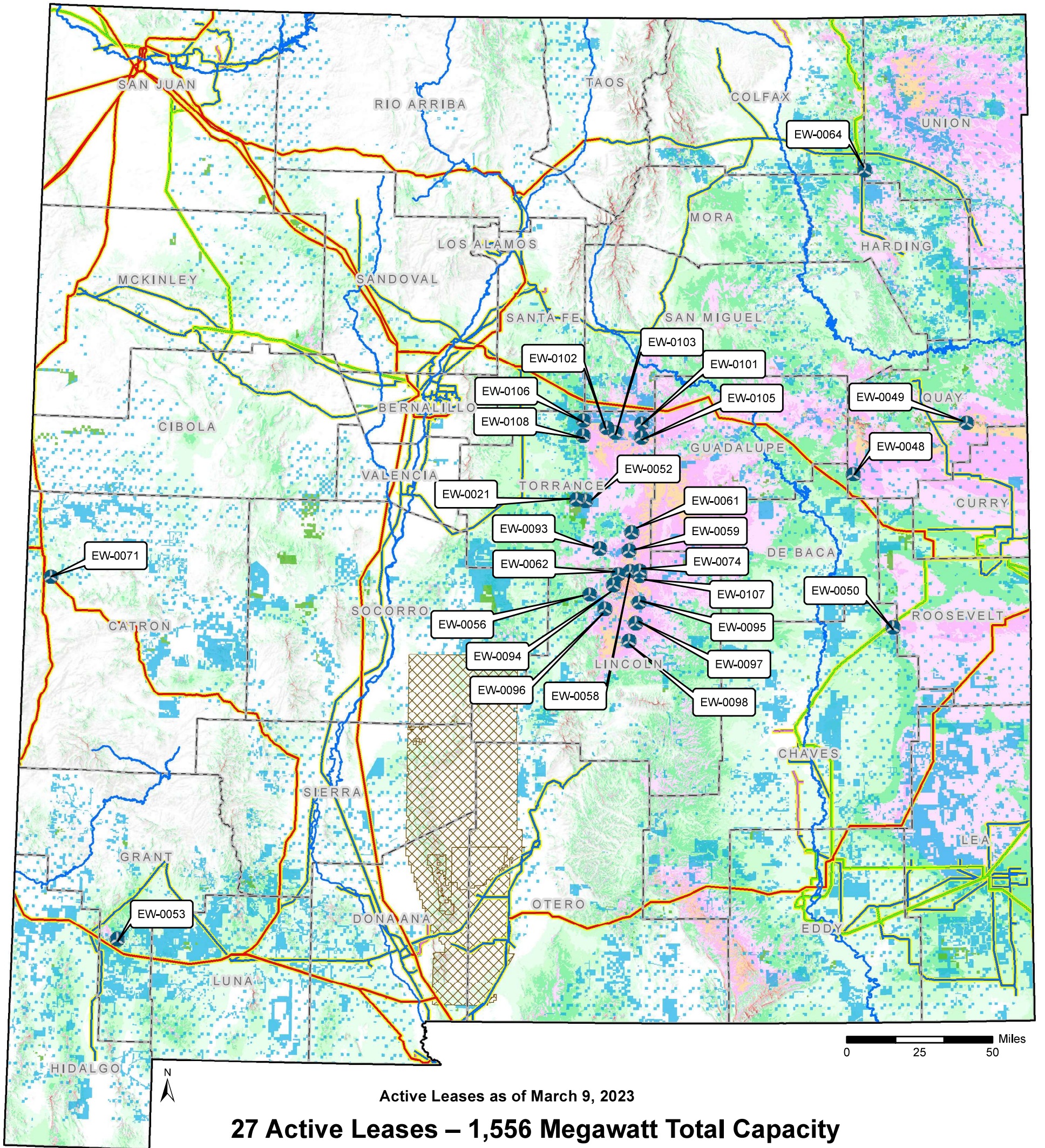


Active Wind Energy Projects on NM State Trust Land



Active Leases as of March 9, 2023

27 Active Leases – 1,556 Megawatt Total Capacity

NM State Land Office	Mean Speed at 50 m		Electric Transmission Lines
	mph	m/s	
Wind Leases Active	< 12.3	< 5.5	Under 100 Kv 100 -161 Kv 220 - 287 Kv 345 - 500 Kv White Sands Missile Range
State Trust Lands Surface Estate Both Estates Rivers	12.3 - 13.4 13.4 - 14.5 14.5 - 15.7 15.7 - 16.8 16.8 - 17.9 17.9 - 19.0 19.0 - 20.1 20.1 - 21.3 > 21.3	5.5 - 6.0 6.0 - 6.5 6.5 - 7.0 7.0 - 7.5 7.5 - 8.0 8.0 - 8.5 8.5 - 9.0 9.0 - 9.5 > 9.5	



Stephanie Garcia Richard
 Commissioner of Public Lands
 505-827-5761
www.nmstatelands.org

The New Mexico State Land Office assumes no responsibility or liability for, or in connection with, the accuracy, reliability or use of the information provided herein, with respect to State Land Office data or data from other sources. Data pertaining to New Mexico State Trust Lands are provisional and subject to revision, and do not constitute an official record of title. Official records may be reviewed at the New Mexico State Land Office in Santa Fe, New Mexico. Compiled, edited and printed by the Land Office Geographic Information Center. V:\CommercialRenewable_Energy\MXD\ExportedMaps\Maps for WebSite\20230314_Active_Wind_Energy_Projects_on_NM_State_Trust_Land. Save Date: March 14, 2023. Created by: David Barsanti dbarsanti@slo.state.nm.us 505-827-5767

LONG TERM WIND LEASES ON NEW MEXICO STATE TRUST LAND

Lease Number	Status as of 3/9/2023`	Project Name	Parent Company Name	Lessee Name	County	Acres	Megawatts
EW-0021	Operating	El Cabo Wind	AvanGrid	El Cabo Wind	Torrance	39,363	191.7
EW-0052	Operating	La Joya Wind	AvanGrid	La Joya Wind	Torrance	6,954	36.7
EW-0048	Operating	NM Wind Energy Center	NextEra	New Mexico Wind	Quay	1,160	24.0
EW-0049	Operating	Caprock Wind	Leeward Renewable Energy	Caprock Wind	Quay	1,840	4.0
EW-0050	Operating	San Juan Wind	Clearway Energy	San Juan Mesa Wind	Chaves, Roosevelt	4,234	46.0
EW-0071	Operating	Borderlands Wind	NextEra	Borderlands Wind	Catron	642	6.1
EW-0059	Operating	Tecolote Wind	Pattern Energy	Tecolote Wind	Torrance	5,798	45.1
EW-0061	Operating	Duran Mesa Wind	Pattern Energy	Duran Mesa Wind	Torrance	1,920	8.5
EW-0074	Operating	Red Cloud Wind	Pattern Energy	Red Cloud Wind	Lincoln	2,283	5.6
EW-0053	Development	Great Divide Wind	Scout Clean Energy	Great Divide Wind	Grant	16,204	100.0
EW-0064	Development	Gladstone Wind	PNE AG	Gladstone New Energy	Colfax and Union	7,636	31.0
EW-0056	Development	SunZia Wind South	Pattern Energy	Mesa Canyons Wind	Lincoln, Torrance	5,217	20.4
EW-0058	Development	SunZia Wind South	Pattern Energy	Mesa Canyons Wind	Lincoln	1,028	7.0
EW-0062	Development	SunZia Wind South	Pattern Energy	Mesa Canyons Wind	Lincoln	2,199	20.4
EW-0093	Development	SunZia Wind South	Pattern Energy	Mesa Canyons Wind	Torrance	7,698	61.2
EW-0094	Development	SunZia Wind South	Pattern Energy	Mesa Canyons Wind	Lincoln	7,468	54.4
EW-0095	Development	SunZia Wind South	Pattern Energy	Mesa Canyons Wind	Lincoln	3,760	13.6
EW-0096	Development	SunZia Wind South	Pattern Energy	Mesa Canyons Wind	Lincoln	17,534	132.6
EW-0097	Development	SunZia Wind South	Pattern Energy	Mesa Canyons Wind	Lincoln	7,663	64.6
EW-0098	Development	SunZia Wind South	Pattern Energy	Mesa Canyons Wind	Lincoln	3,521	13.6
EW-0101	Development	SunZia Wind North	Pattern Energy	El Corazon Wind	Torrance & San Miguel	22,138	30.6
EW-0102	Development	SunZia Wind North	Pattern Energy	El Corazon Wind	Torrance	9,828	68.0
EW-0103	Development	SunZia Wind North	Pattern Energy	El Corazon Wind	Torrance	3,828	68.0
EW-0105	Development	SunZia Wind North	Pattern Energy	El Corazon Wind	Torrance	7,365	44.2
EW-0106	Development	SunZia Wind North	Pattern Energy	El Corazon Wind	Torrance & San Miguel	56,681	374.0
EW-0107	Development	SunZia Wind South	Pattern Energy	Mesa Canyons Wind	Lincoln	2,318	27.2
EW-0108	Development	SunZia Wind North	Pattern Energy	El Corazon Wind	Torrance	13,370	57.8

Overall Total 259,651 1,556.2

Shaded cells above indicate estimates