



New Mexico Species of Greatest Conservation Need

NEW MEXICO STATE WILDLIFE ACTION
PLAN 2024 REVISION

— JON HAYES, AUDUBON SOUTHWEST



A Closer Look: Hunting Participation in the United States.

Hunters age 16 and older in 2022

14,374,589
hunters



11 trips
on average

17 days
on average

\$75
average trip-related
expenditures per trip

\$45.2 billion
spent by hunters

\$3,146
average annual amount
spent per hunter

\$857
average total trip-related
expenditures per hunter

Species Hunted in 2022

11.5 million hunters
of Big Game

5.3 million hunters
of Small Game

2.8 million hunters
of Migratory Birds

2.3 million hunters
of Other Animals
(raccoons, feral pigs, etc.)

186,737,755

number of meals produced
from harvested waterfowl!

Data from the Wild Harvest Initiative (2014-2019)



SOURCE: The National Survey of Fishing, Hunting, & Wildlife-Associated Recreation. Scan the QR code on the left to read the full report.



Office of
**CONSERVATION
INVESTMENT**

A Closer Look: Wildlife Watching Participation in the United States.

Wildlife watching age 16 and older in 2022

148,280,092
wildlife watchers



7 trips
on average

88 days
on average

\$39
average trip-related
expenditures per trip

\$250,198,668,336
spent on wildlife watching

\$1,687
average annual amount
spent per wildlife watcher

\$284
average total trip-related
expenditures per wildlife watcher

96.3 million
bird watchers out of the
148.2 million wildlife watchers

Population Distribution
of Wildlife Watchers

- Urban Residents
113 million
- Rural Residents
34.8 million



Office of
**CONSERVATION
INVESTMENT**



SOURCE: The National Survey of Fishing, Hunting, & Wildlife-Associated Recreation. Scan the QR code on the left to read the full report.

Outdoor Recreation is Big Business in New Mexico

- **NM's outdoor recreation economy provides \$1.2 billion in income annually and 33,500 jobs.**
- **Mountain state (AZ, ID, MT, NV, NM, UT and WY) wildlife viewers spend almost \$15 billion and provide \$700 million in tax revenue annually.**
- **State revenue is more than just license fees. Includes tax revenue from sales and lodging.**



State Wildlife Action Plans

- **Serve as the nation's blueprints for proactively conserving fish and wildlife to prevent species from becoming endangered.**
- **Required to be eligible for Federal State Wildlife Grants (almost \$30 million received since 2002).**
- **Land of enchantment legacy fund and Pitman-Robertson spending also guided by SWAP.**
- **First plans created in 2005. Last revision in 2016.**
- **Required by US Fish and Wildlife Service to complete a revision by October 1, 2025 (along with most other states).**




Pyrruloxia



Reasons to revise

- Continued population declines
- New threats emerging (renewables, disease)
- Addition of pollinating insects
- New data to incorporate
- Process being refined and standardized
- Climate impacts



46% of bird species in New Mexico are vulnerable to extinction by end of the century under a 3° warming scenario

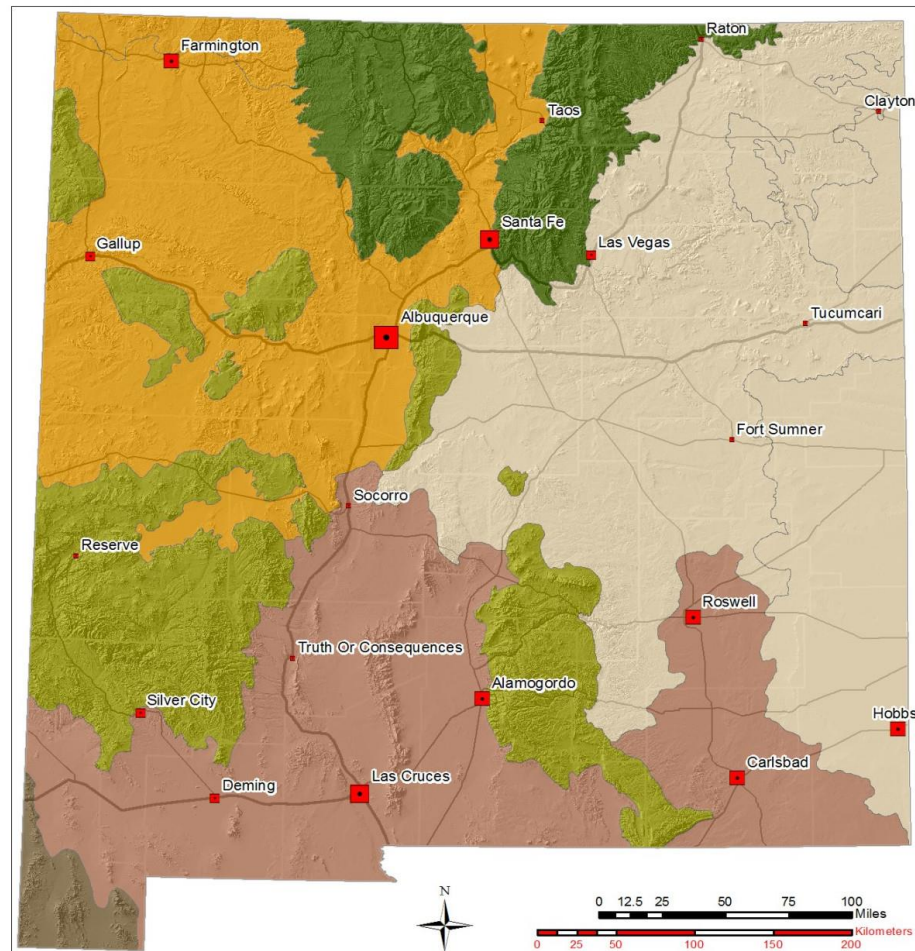


Number of SGCN by taxonomic group in 2017 and 2025 SWAP

	2017	2025
Amphibians	14	15
Bees	0	32
Beetles	0	2
Birds	72	145
Butterflies & Moths	0	44
Crustaceans	30	31
Fishes	29	39
Flies	0	8
Mammals	24	57
Molluscs	46	86
Reptiles	20	40

6 New Mexico Ecoregions

- **Southern Rockies**
- **Colorado Plateau**
- **Arizona/New Mexico Mountains**
- **High Plains and Tablelands**
- **Chihuahuan Desert**
- **Madrean Archipelago**



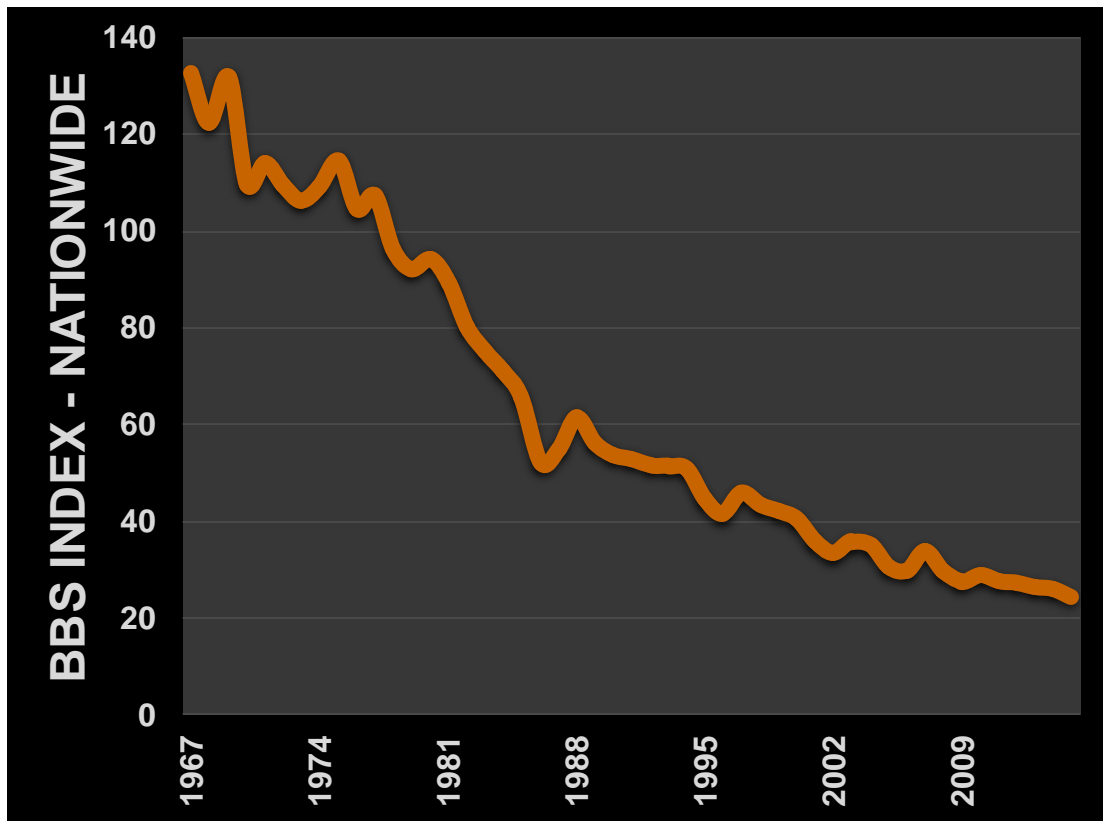
A wide-angle landscape photograph of a high plain and tablelands. The foreground is filled with tall, green grasses and numerous bright orange wildflowers. The middle ground shows a vast, flat expanse of grassland stretching to the horizon. In the distance, a prominent, flat-topped mesa or butte stands out against the sky. The sky is filled with large, dramatic, grey and white clouds, with patches of blue visible. The overall scene is a typical representation of a high-altitude grassland ecosystem.

High Plains and Tablelands



Chestnut-collared Longspur

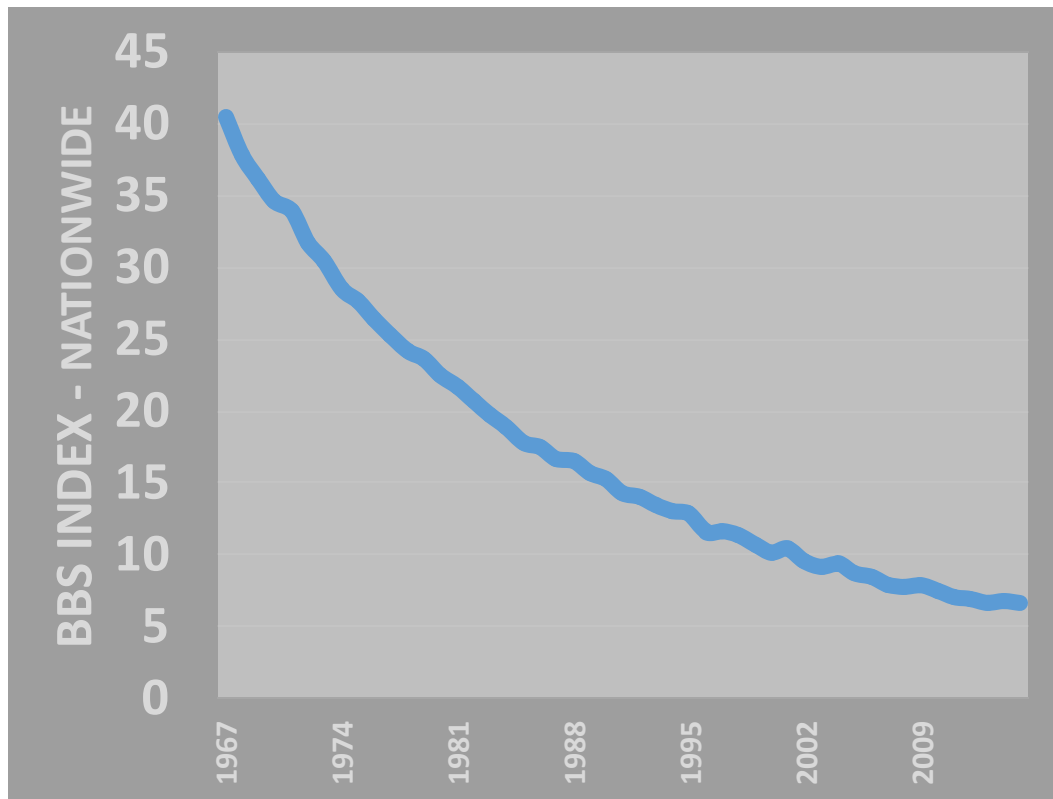
Chestnut-collared Longspur



A wide-angle landscape photograph of the Colorado Plateau. The foreground is dominated by large, layered sandstone rock formations on the right and green juniper trees on the left. The middle ground is a vast, flat expanse of scrubland with scattered green bushes and small trees. In the far distance, a range of blue mountains is visible under a sky filled with large, white and grey clouds.

Colorado Plateau

Pinyon Jay



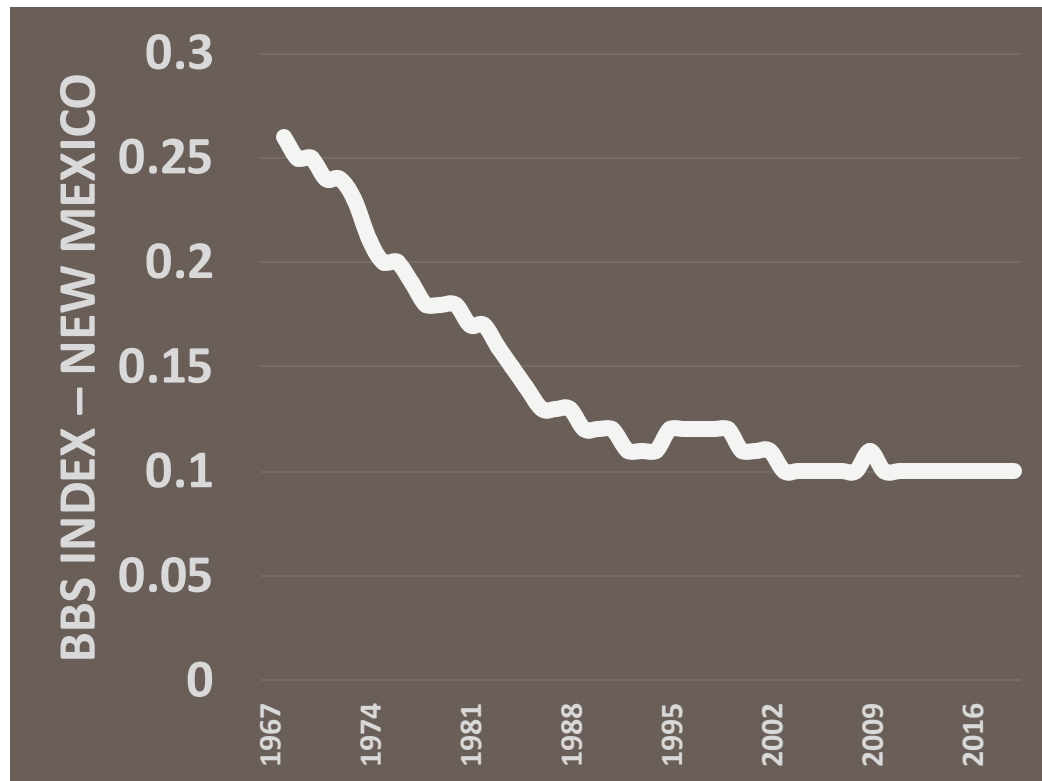
Southern Rockies





Willow Flycatcher

Southwestern Willow Flycatcher



Conservation Actions

- **Natural system modifications**
- **Invasive and problematic species**
- **Pollution**
- **Development**
- **Agriculture and aquaculture**
- **Energy and mining**
- **Transportation and utilities**
- **Biological resource use**
- **Human intrusions and disturbance**
- **Climate change**





NMDGF Resource and Capacity needs

Migratory Gamebird Biologist

Upland Gamebird Biologist

Lesser Prairie Chicken Biologist

Non-game Bird Biologist

Public investment and partner involvement are necessary

Thank you!

