

NMDOT

New Mexico Department of Transportation: Report to Legislative Finance Committee

November 2024

Secretary Ricky Serna and David Quintana, P.E.





- ❑ The Condition Analysis Report (CAR) was developed as part of NMDOT's TAMP Implementation.
- ❑ The purpose of the CAR is for data-driven project selection.

CAR Information Form
Conditions Analysis Report

BLUE - to be completed by the NMDOT Districts
ORANGE - to be completed by NMDOT Asset Management

The Conditions Analysis Report (CAR) Information Form allows for a streamlined approach to data collection on potential projects which will then be used for both the state-wide project selection process and level of effort determination for project delivery.

Project Information

Date	Name	NMDOT District	Select
Project Location	Roadway		
Project Length	Project Type		
Bridge No.	Mileposts	Project County	Select

Safety

Number of crashes over most-recent 5-year period^	
Fatalities^	
Total Crashes per Mile	
Total Crashes per Million Miles VMT	

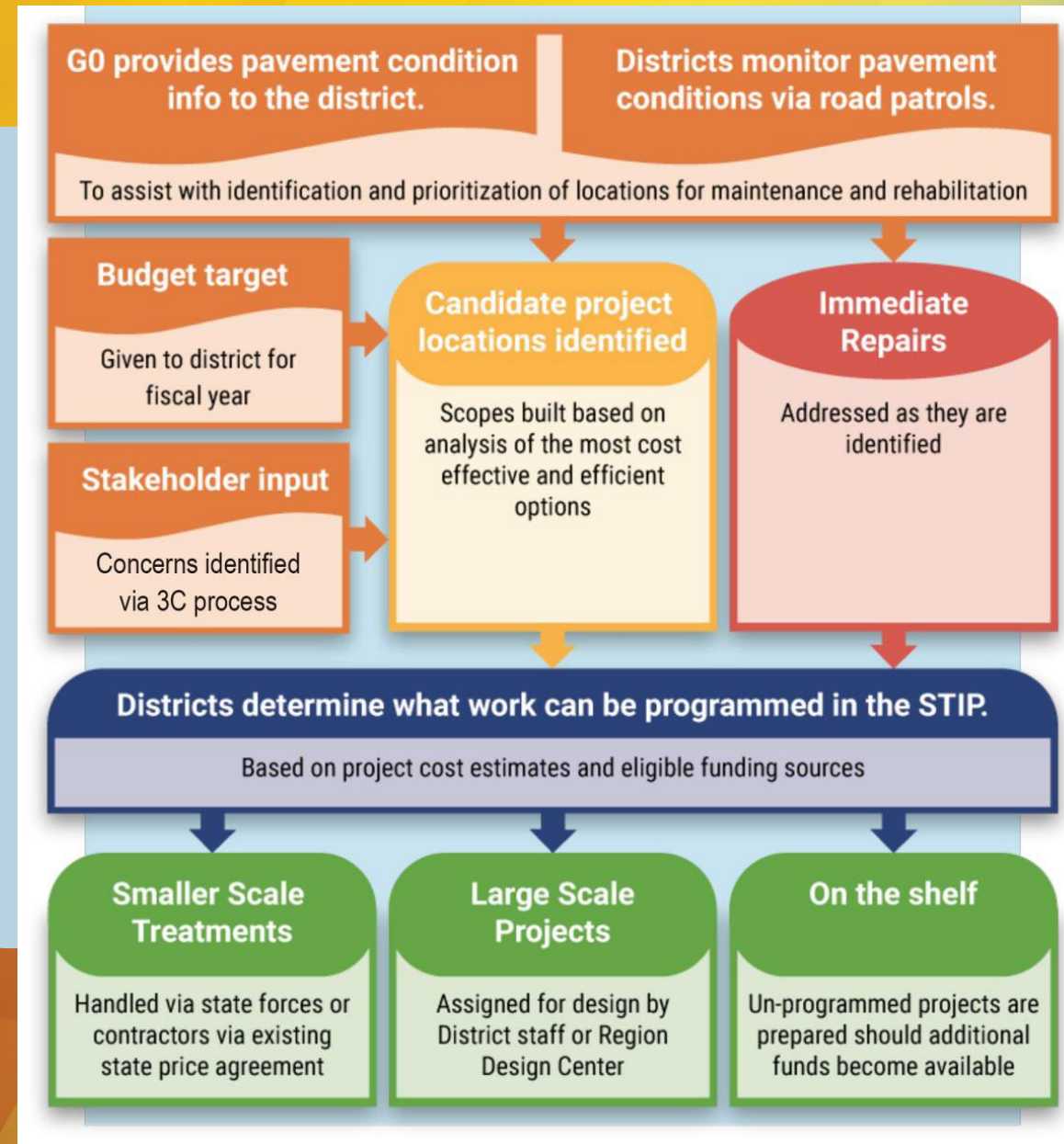
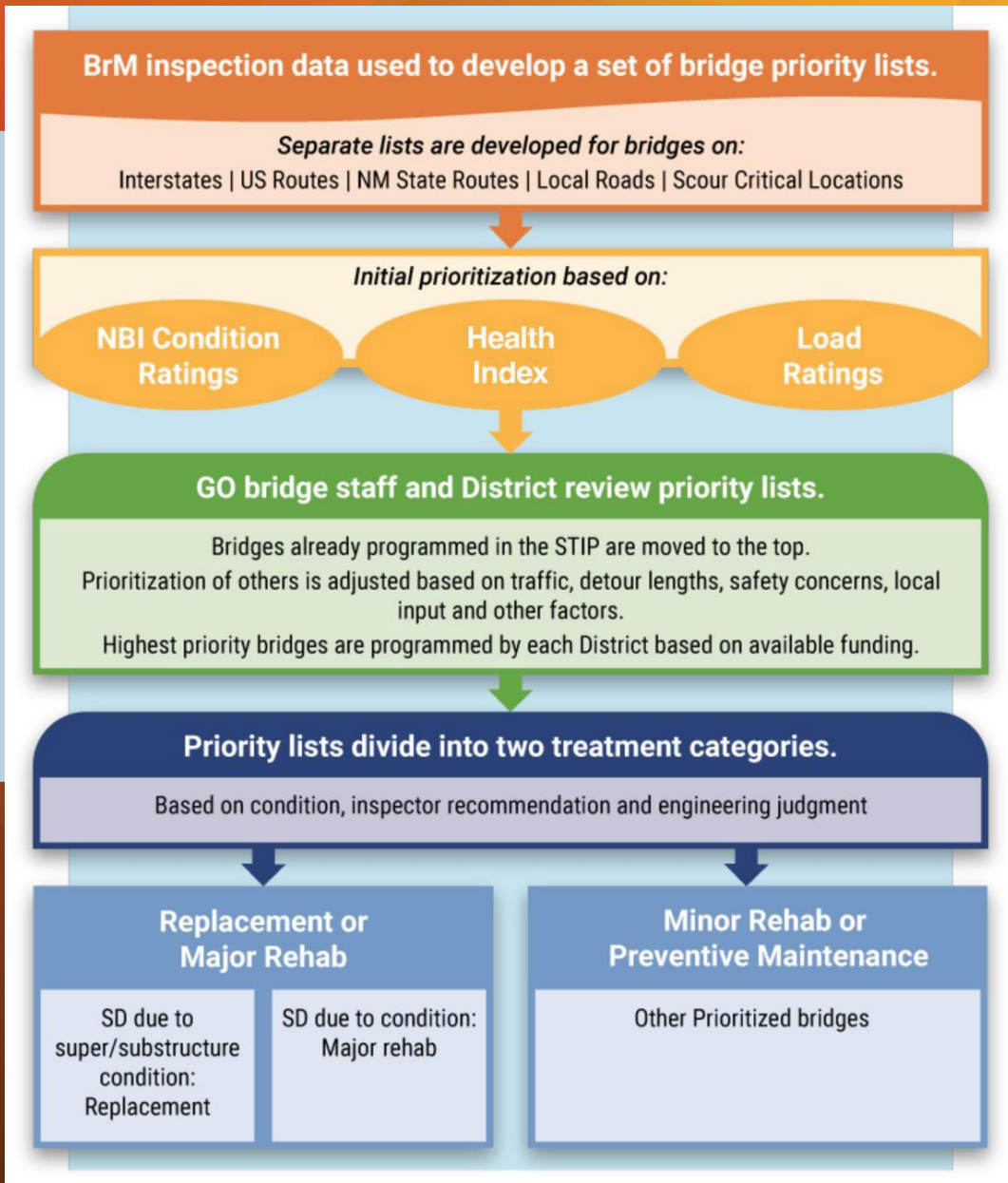
Conditions

Pavement Condition Rating*	Select
Bridge Condition Rating*	Select
PMS-Recommended Preservation Treatment ¹	Final Preservation Treatment ¹
Bridge Rating: Poor - <4 Fair - 5-6 Good - >7	
Pavement Rating: Poor 0 - 45 Fair 45.01 - 65 Good 65.01 - 100	

Mobility

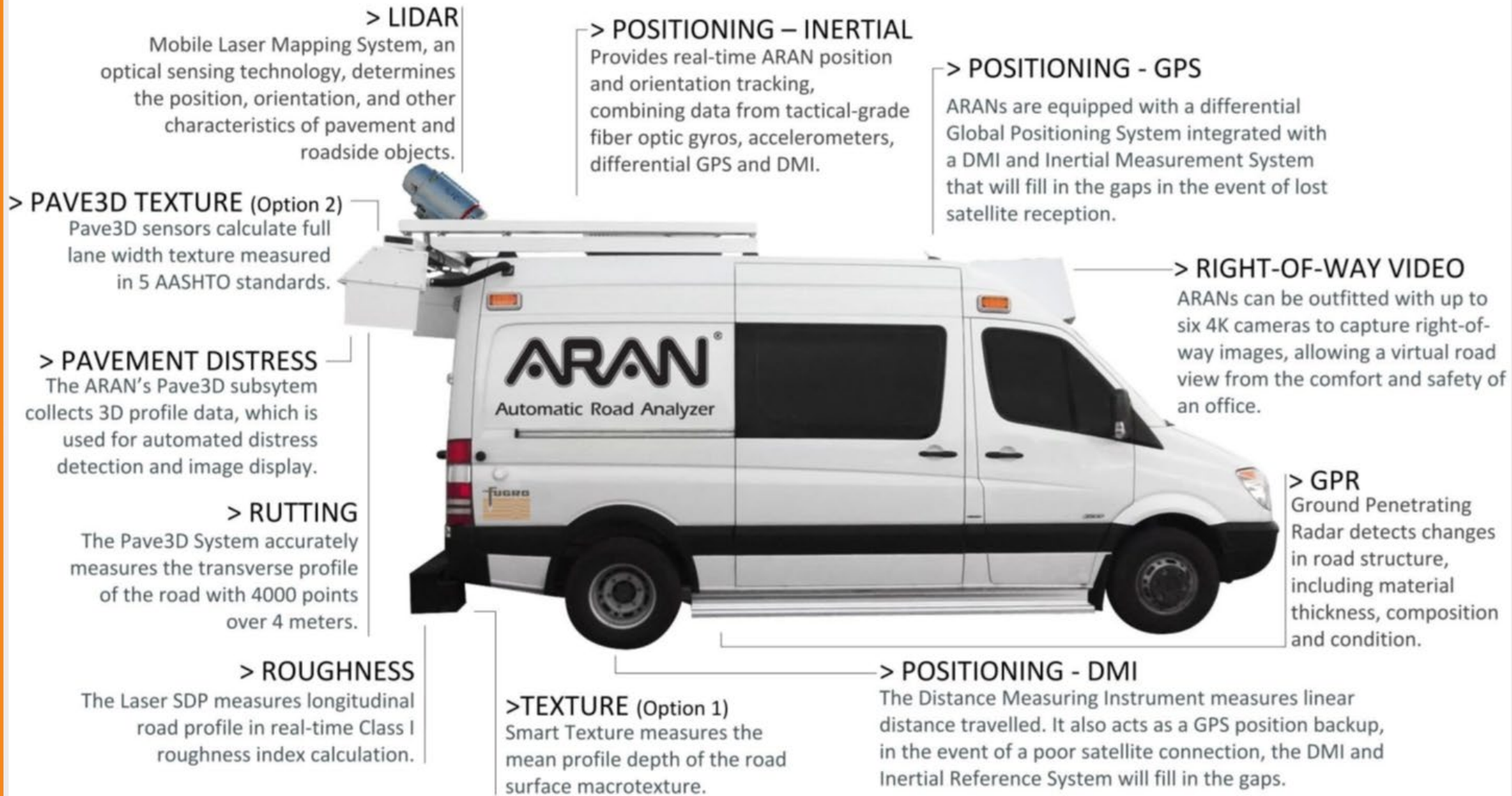
AADT*	Number of Lanes*	AADT per Lane ¹	Shoulder Width ^
Freight AADT*	Percentage of Freight Traffic in total AADT (%) ¹	Sidewalks (Y/N) ¹	Transit Route (Y/N) ^
Functional Classification*	Select	Planning Area (MPO/RTPO) *	Select
Daily VMT ¹		NM Bike Plan Tier ^	Select

Physical Deficiencies



Collecting Road Conditions Data

- 20 data elements through the LiDAR asset collection project
- Road Inventory System (RIS) database collects data for yearly Highway Performance Monitoring System reporting



☐ Long Range Plan

☐ Factors for the STIP

- Inner Years
- Outer Years

☐ Decisions to Shift Funds

- ☐ Fiscally Constrained Large Projects
- ☐ Design Timelines

Figure 7: NMDOT Performance-Based Planning and Programming

