



Susana Martinez  
GOVERNOR

William Mattiace  
Executive Director

**September 19, 2017**

**New Mexico Finance Authority (NMFA)  
Oversight Committee  
8012 Airport Rd.  
Santa Teresa, NM 88008**

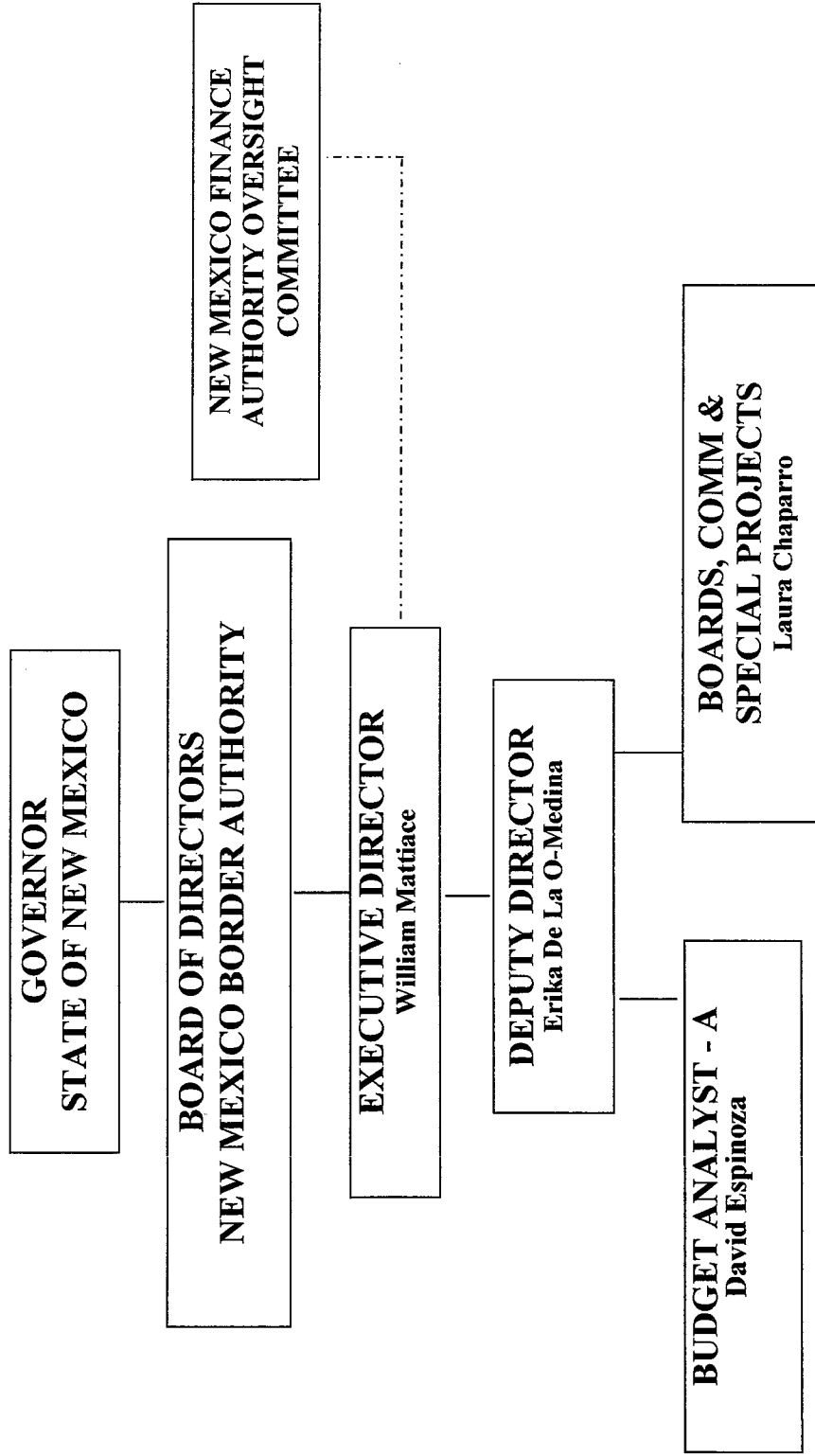
Agency Name: New Mexico Border Authority

Program Name: Border Development

Business Unit: 41700

Program Code: P646

**APPROPRIATION REQUEST  
ORGANIZATION CHART  
FORM S-2**



[www.fhwa.dot.gov/planning/borderplanning/as Mexico/approve the plan](http://www.fhwa.dot.gov/planning/borderplanning/as%20Mexico/approve%20the%20plan)

## Border Planning for the 21<sup>st</sup> Century

Multiagency partnerships, innovative strategies, and new technologies are improving the safety, efficiency, and security of overland ports of entry.

Since 1990 an average rate of growth is 8-10% per year.

USDOT Bureau of Transportation Statistics show that 80% of passenger vehicle trips across the border with Mexico involve same day travel to take part in everyday activities, such as commuting to jobs, shopping, visiting family and friends, and accessing health care.

NMBA recognizing the value of cross border travel and trade: the NMBA is involved in a number of initiatives with its State, Federal and International partners to address the challenges of improving mobility and security at overland border crossings.

NMBA with its counterparts in Mexico: FHWA creating joint working groups that cooperate on planning and facility cross-border movement.

NMBA takes the lead for the State of New Mexico in preparing and updating the Department of State at the JWC and the BBBXG meetings held in the US and Mexico.

## The 1994 North American Free Trade Act

NAFTA eliminated many trade barriers between the United States and its neighbors. USDOT identified the need for a mechanism to address binational transportation issues with Mexico's Secretariat of Communications and Transportation (SCT). A 1994 MOU between the two countries established a Joint Working Committee (JWC) to coordinate planning and programming of intermodal projects along the US-Mexico border.

Let me list a few of the NMBA projects presented and approved by the JWC:

- Flood study funds (capital outlay) to protect and secure the Village of Columbus and a \$90M port of entry facility
- Dual Customs Clearance-Southbound Road Expansion
- Technology Exchange programs has resulted in several technology exchanges between US-Mexico border
- International Rail Crossing
- Dr. Milligan research grant

The NMBA has been actively engaging in regional planning with the El Paso Master Planning Organization (EPMPO), Borderplex Alliance, Las Cruces MPO and others. It has been collaborating with NMDOT on the dissemination of information on projects affecting the Santa Teresa POE such as the implementation of the fuel tax on commercial vehicles. This tax implementation has caused truck traffic to decrease in the area even though going to El Paso is more expensive, \$6/truck vs. \$25/truck, respectively.

Why have we made the NMBA a steady member of the JWC?

A new MOU was signed in 2000 reinforcing the importance of the JWC. Along with the Master Border Plans of which the NMBA serves on all regional planning committees: El Paso-Santa Teresa-Chihuahua Master Border Plan (2008), NMDOT Regional Border Master Plan (2014), and the USDOT Southern Border Comprehensive Master Border Plan (2017).

In an on-going effort, the committee is looking at financing tools available for trans-border projects from USDOT, SCT, States, municipalities, binational agencies such as the NAD Bank, and international agencies such as the World Bank.

Another study for NMBA analyzed short term, low cost ways to solve road infrastructure and traffic management bottlenecks that slow the movement of people and goods at the US-Mexico border.

By working with agencies at the BBBXG meetings and sharing technologies at the JWC meetings, we are not focusing on the needs of individual states or counties, but looking how New Mexico can enhance the movement of people and goods throughout North America.



INTERNATIONAL  
**TRADE**  
ADMINISTRATION

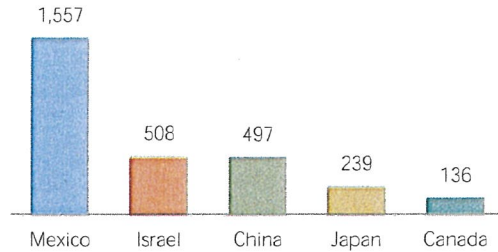
# New Mexico Exports, Jobs, & Foreign Investment

## New Mexico Depends on World Markets

- Exports from New Mexico helped contribute to the \$2.21 trillion of U.S. goods and services exports in 2016.

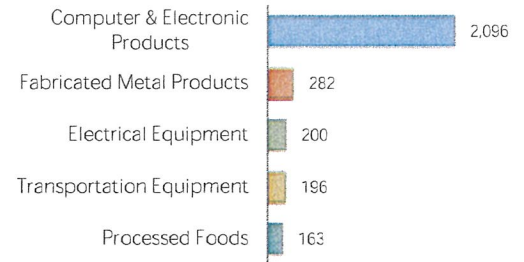
# \$3.6 billion

New Mexico's Top 5 Export Markets (Millions of U.S. Dollars)



## New Mexico goods exports in 2016

New Mexico's Top 5 Export Categories (Millions of U.S. Dollars)

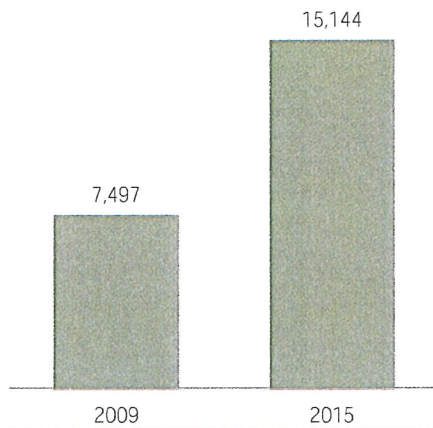


## Exports Support Jobs

- Nationally, U.S. jobs supported by exports reached an estimated 11.5 million in 2015, up 1.9 million from 2009.

## Jobs Supported by New Mexico Goods Exports

Up by 8 Thousand Jobs Since 2009



# 15,144

U.S. jobs supported by goods exports from New Mexico in 2015

**94%** of these jobs were supported by manufactured goods exports

## Exports Sustain Thousands of New Mexico Businesses

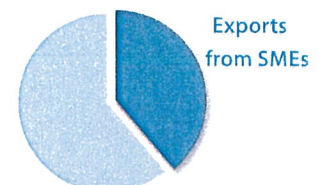
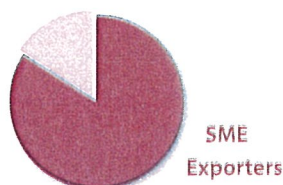
- A total of 1,413 companies exported from New Mexico locations in 2014.

# 1,187

Number of small and medium-sized (SME) goods exporters in New Mexico in 2014

SMEs account for **84%** of New Mexico goods exporters

...and **39%** of known New Mexico goods export value





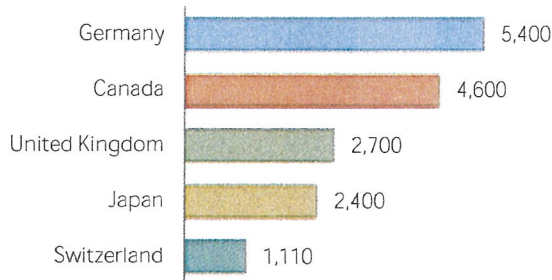
INTERNATIONAL  
**TRADE**  
ADMINISTRATION

# New Mexico Exports, Jobs, & Foreign Investment

## Foreign Investment & Jobs in New Mexico

- In 2014, foreign-owned companies employed 22,400 New Mexico workers

New Mexico Employment in Foreign-Owned Companies  
Number of Employees by Country of UBO



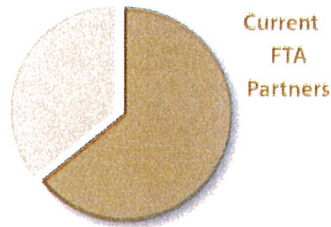
**3.6%**

Share of New Mexico private-industry employment at foreign-owned firms

## Free Trade Agreements

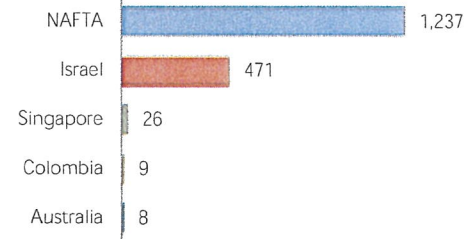
- The U.S. currently has 14 free trade agreements in force with 20 countries.
- New Mexico's exports to U.S. FTA partners totaled \$2.3 billion in 2016.

In 2016, exports to FTA markets accounted for **64%** of New Mexico exports



Since 2006, exports from New Mexico to FTA markets have grown by **176%**

Top Dollar Growth, 2006-16  
(Millions of U.S. Dollars)



## New Mexico's Metropolitan Exports

- Albuquerque is the 110th largest metro area reporting exports nationwide.

Metro Area	2015 Goods Export Value	Share of State Exports
Albuquerque	\$1.8 billion	48.3%
Las Cruces	\$1.6 billion	43.7%
Farmington	\$44 million	1.2%
Santa Fe	\$29 million	0.8%

Prepared by the Office of Trade and Economic Analysis, International Trade Administration, U.S. Department of Commerce.

For more resources please see [www.trade.gov/mas/ian](http://www.trade.gov/mas/ian). Sources include resources from the U.S. Department of Commerce's International Trade Administration, Bureau of the Census, and Bureau of Economic Analysis.

**APPROPRIATION REQUEST  
EXPENDITURE ACCOUNT CODE DETAIL  
FORM E-4  
(Dollars in Thousands)**

Agency Name: New Mexico Border Authority  
 Program Name: Border Authority  
 Department (optional): \_\_\_\_\_

Business Unit: 41700  
 Program Code: P646  
 Department Code (optional): \_\_\_\_\_

Read "Instructions" carefully when completing this form

Reporting Category	Account Code	Prior FY Actual	Current FY OP/BUD	APPROPRIATION BASE REQUEST				TOTAL	DETAILED Justification/Description
				GF	OSF	ISF/IAT	FF		
<b>Personal Services and Employee Benefits</b>									
Exempt Perm	520100	119.9	119.4	119.4				119.4	
Term	520200								
Perm/Full	520300	90.9	90.5	71.5	23.6			95.1	
Perm/Part	520400								
Temporary	520500								
Pd Sick Leave	520600								
Overtime	520700								
Ann/Comp Pd	520800								
Shift Diff	520900								
Group Ins	521100	48.7	49.0	49.0				49.0	
Retirement	521200	35.8	35.7	36.5				36.5	
FICA	521300	14.6	16.1	16.4				16.4	
Workers' Comp	521400	0.1							
GSD Workers' Comp	521410	0.5	0.3	0.2				0.2	Amount requested is directed to be consistent with the published schedule. If an alternative amount is being requested, a justification must be provided.
Unempl Lbly	521500								Amount requested is directed to be consistent with the published schedule. If an alternative amount is being requested, a justification must be provided.
Empl Lbly	521600	4.5	4.4	2.2				2.2	Amount requested is directed to be consistent with the published schedule. If an alternative amount is being requested, a justification must be provided.
Retiree Health Care	521700	4.2	4.2	4.3				4.3	Amount requested is directed to be consistent with the published schedule. If an alternative amount is being requested, a justification must be provided.
Other Emp Bnft	521900								
<b>Total PS&amp;EB</b>		<b>319.2</b>	<b>319.6</b>	<b>299.5</b>	<b>23.6</b>	<b>-</b>	<b>-</b>	<b>323.1</b>	
<b>Contractual Services</b>									
Med Services	535100								
Prof Services	535200		10.6		10.6			10.6	
Prof Services- Interagency	535209								
Other Contractual	535300	11.0	32.3		32.0			32.0	Increased based on NMBA assuming NM-MX Commission program
Other Svcs Inter Agency	535309								
Other Svcs Comp U	535310								
Audit	535400	9.6	9.6		10.4			10.4	
Attorney Fees	535500								
IT Services	535600								
IT Services- Interagency	535609								
Capital Professional Contracts	535800								
<b>Total Contracts</b>		<b>20.6</b>	<b>52.5</b>	<b>-</b>	<b>53.0</b>	<b>-</b>	<b>-</b>	<b>53.0</b>	

7

**APPROPRIATION REQUEST**  
**EXPENDITURE ACCOUNT CODE DETAIL**  
**FORM E-4**  
*(Dollars in Thousands)*

Agency Name: New Mexico Border Authority  
 Program Name: Border Authority  
 Department (optional): \_\_\_\_\_

Business Unit: 41700  
 Program Code: P646  
 Department Code (optional): \_\_\_\_\_

*Read "Instructions" carefully when completing this form*

Reporting Category	Account Code	Prior FY Actual	Current FY OPBUD	APPROPRIATION BASE REQUEST				TOTAL	DETAILED Justification/Description
				GF	OSF	ISF/IAT	FF		
<b>Other Costs</b>									
Instate M & F	542100	2.2	4.5	-	4.5	-	-	-	Increased based on NMBA assuming NM-MX Commission program
Instate M & L	542200	3.8	5.4	-	5.4	-	-	-	Increased based on NMBA assuming NM-MX Commission program
Brd/Comm Exp	542300	2.0	5.0	-	5.0	-	-	-	Increased based on NMBA assuming NM-MX Commission program
EE Non Routine Part. Per Diem	542400								
Trans Fuel/Oil	542500	1.7	2.4	-	2.4	-	-	-	
Trans Parts	542600								
Trans Ins	542700	0.2	0.2	-	0.2	-	-	-	
Trans Pool	542800	2.0	2.1	-	2.1	-	-	-	
Trans Other	542900								
Grounds/Rdways	543100	1.4	0.2	-	1.4	-	-	-	
Furn/Fix/Equip	543200	2.1	2.0	-	2.0	-	-	-	
Blids/Structure	543300		16.8	-	7.7	-	-	-	Amount requested is directed to be consistent with the published schedule. If an alternative amount is being requested, a justification must be provided.
Property Ins	543400								
Maint Supplies	543500	0.8	0.3	-	1.0	-	-	-	
Lndy/Dry C'ing	543600								
Manit Svcs	543700	6.9	4.5	-	7.0	-	-	-	
IT Maintenance	543820								
Other Maint	543900								
Suppl-Inv Exempt IT	544000	2.9	3.4	-	3.4	-	-	-	Increased based on NMBA assuming NM-MX Commission program
Office Supplies	544100	1.9	3.7	-	2.5	-	-	-	
Med/Lab/Prsnl	544200								
Drugs	544300								
Field Supplies	544400	0.2	0.4	-	0.4	-	-	-	
Food	544500								
Kitchen Supplies	544600								
Clothing/Unif	544700								
Educ/Rec Spls	544800								
Invent Exempt	544900								
Rep/Recording	545600								
Rep/Recording- Interagency	545609								
DOIT ISD Services	545700	0.7	0.8	-	0.7	-	-	-	Amount requested is directed to be consistent with the published schedule. If an alternative amount is being requested, a justification must be provided.
DOIT HRMS Fee	545710	1.4	1.6	-	1.6	-	-	-	Amount requested is directed to be consistent with the published schedule. If an alternative amount is being requested, a justification must be provided.





**APPROPRIATION REQUEST  
EXPENDITURE ACCOUNT CODE DETAIL  
FORM E-4**  
*(Dollars in Thousands)*

Agency Name: New Mexico Border Authority Business Unit: 41700  
 Program Name: Border Authority Program Code: P646  
 Department (optional): \_\_\_\_\_ Department Code (optional): \_\_\_\_\_

*Read "Instructions" carefully when completing this form*

Reporting Category	Account Code	Prior FY Actual	Current FY OPBUD	APPROPRIATION BASE REQUEST				TOTAL	DETAILED Justification/Description
				GF	OSF	ISF/IAT	FF		
Radio Comm Services	545800								
DOIT Radio Comm	545810								
Printing/Photo	545900	0.5	0.3		1.0			1.0	
Building Use Fee GSD	546000								
Postage/Msgr	546100	0.1	0.6		0.8			0.8	Increased based on NMBA assuming NM-MX Commission program
Postage/Msgr- Interagency	546109								
Bond Assurity for Employees	546200								
Utilities - Sewer	546310	3.0	4.0		4.0			4.0	Increased based on NMBA conference room expansion
Utilities - Elect	546320	15.6	17.0		18.5			18.5	Increased based on NMBA conference room expansion
Utilities - Water	546330		0.6		0.6			0.6	
Utilities - Ngas	546340	0.4	1.0		1.0			1.0	Increased based on NMBA conference room expansion
Utilities - Propn	546350								
Rent/Bldg/Land	546400		8.3		8.3			8.3	Increased based on NMBA assuming NM-MX Commission program
Rent/Bldg/Land- Interagency	546409								
Rent of Equip	546500	2.0	2.0		2.0			2.0	
Telecomm	546600	5.0	5.7		5.7			5.7	Increased based on NMBA assuming NM-MX Commission program
DOIT Telecomm	546610	15.3	14.6		15.5			15.5	Amount requested is directed to be consistent with the published schedule. If an alternative amount is being requested, a justification must be provided.
Subs and Dues	546700	0.4	0.6		0.5			0.5	
Subs and Dues- Interagency	546709								
Empl Trng/Educ	546800	2.0	0.5		2.0			2.0	
Empl Trng/Educ- Interagency	546809								
Board Member Training	546810								
Advertising	546900	0.8	1.0		1.0			1.0	Increased based on NMBA assuming NM-MX Commission program
Grants/Individual	547200								
Care/Support	547300								
Care/Support- Interagency	547309								
Grants-to Local Governments	547400								
Grants-to Public Schools-Univ	547410								
Grants to Local Govt - Nonoper	547415								
Grants-Higher Ed Institution	547420								
Grants to Native Amer Indians	547430								
Grants To Other Entities	547440								
Grants to Other Agencies	547450								
Purch/Resale	547500								
Commissions Paid to	547600								
Debt Svc/Principle	547700								

**APPROPRIATION REQUEST  
EXPENDITURE ACCOUNT CODE DETAIL  
FORM E-4  
(Dollars in Thousands)**

Agency Name: New Mexico Border Authority  
 Program Name: Border Authority  
 Department (optional): \_\_\_\_\_

Business Unit: 41700  
 Program Code: P646  
 Department Code (optional): \_\_\_\_\_

Read "Instructions" carefully when completing this form

Reporting Category	Account Code	Prior FY Actual	Current FY OPBUD	APPROPRIATION BASE REQUEST				TOTAL	DETAILED Justification/Description
				GF	OSF	ISF/IAT	FF		
Debt Svc/Interest	547800								
Misc Other Exp	547900	0.2	1.0	1.0				1.0	
Misc Other Exp-Interagency	547909								
Prior Year Exp	547999	0.1							
Land	548100								
Land-Improvements	548110		7.7	5.0					
Furn/Fixtures	548200								
IT Equip	548300		1.5	1.5				1.5	
Other Equip	548400								
Animals	548600								
Lbr. Museum Acq	548700								
Auto/Aircraft	548800								
Bltdgs/Structure	548900								
O/S M & F	549600	3.3	5.5	5.5				5.5	Increased based on NM/BA assuming NM-MX Commission program
O/S M & L	549700	0.8	4.0	4.0				4.0	Increased based on NM/BA assuming NM-MX Commission program
O/S Board M/F	549800								
O/S Board M/L	549900								
<b>Total Other</b>		<b>79.5</b>	<b>129.2</b>	<b>125.2</b>	<b>-</b>	<b>-</b>	<b>-</b>	<b>125.2</b>	
<b>Other Financing Uses</b>									
Other Financing Uses-Int	555100								
Other Financing Uses-Int	555106								
Other Financing Uses-Com	555200								
<b>Program Total</b>		<b>419.3</b>	<b>501.3</b>	<b>299.5</b>	<b>201.8</b>	<b>-</b>	<b>-</b>	<b>501.3</b>	

Codes: GF=General Fund OSF=Other State Funds IAT/ISF=Interagency Transfers and Internal Service Funds FF=Federal Funds  
 Revision no: \_\_\_\_\_ Revision Date: \_\_\_\_\_ Page: \_\_\_\_\_

Check Box if this form is a revision