



NMFA Oversight Committee Presentation

Marco Grajeda
Executive Director

NEW MEXICO
BORDER AUTHORITY



The **NMBA** is an executive branch state agency located in Santa Teresa, NM.
Agency goals:

Agency Background

- Provide leadership in the development of the state's international ports of entry to promote economic growth in the border region.
- Assist in the development of key public and private infrastructure projects.
- Set a regional agenda with our neighboring states in Mexico through the annual NM – Chihuahua & NM – Sonora Commissions.
- Serve as liaison with federal agencies and Mexican officials.

What have been the priorities of the Border Authority since 2019?

1. Advance *Key* Border Infrastructure Projects
2. Expand Regional Collaboration with El Paso and Mexico
3. Strengthen the Border Authority

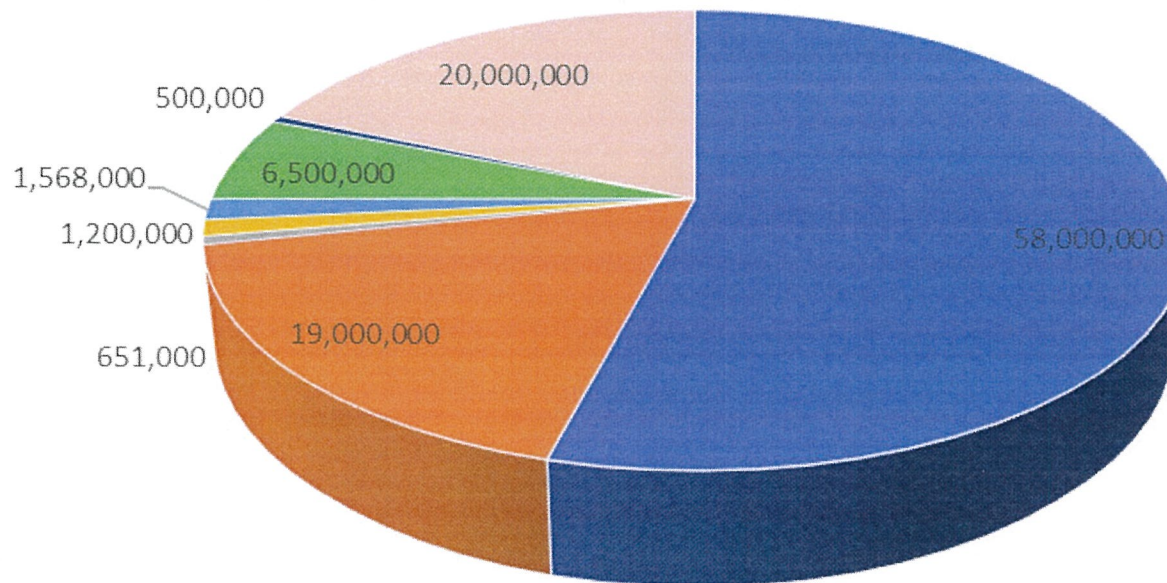
How have we done?

Priority 1: Key Projects

Santa Teresa

The state of New Mexico has made several *key* infrastructure investments, since 2019:

- Border Highway Connector
- Santa Teresa Port of Entry
- Doña County Jetport Runway Enhancements
- Elevated Water Tank
- Luna County Flood Protection Project



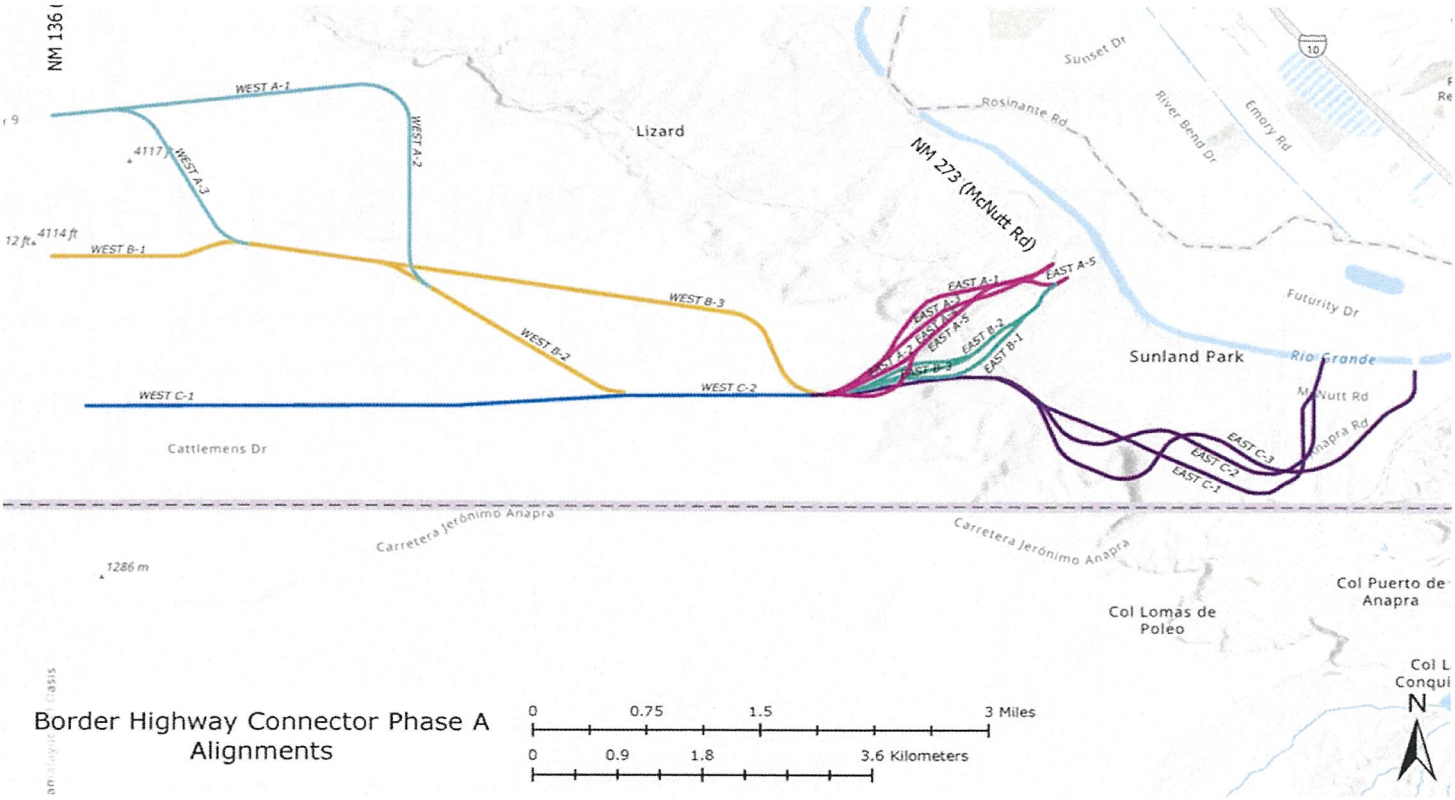
Investment
Total:

+ \$107
Million

Border Highway Connector

Domenici Highway (NM136), Santa Teresa to (NM273) McNutt Rd, Sunland Park

Phase A- Alternatives



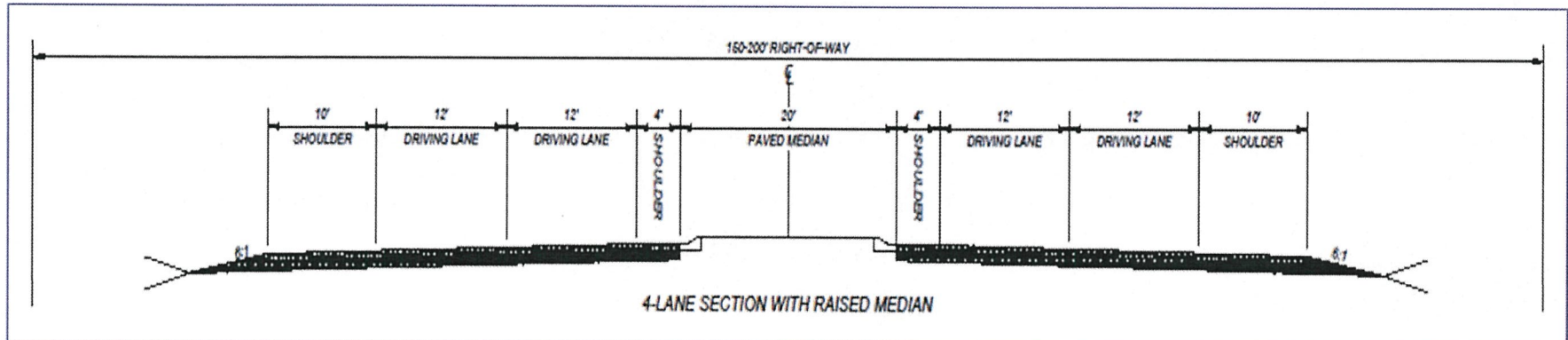
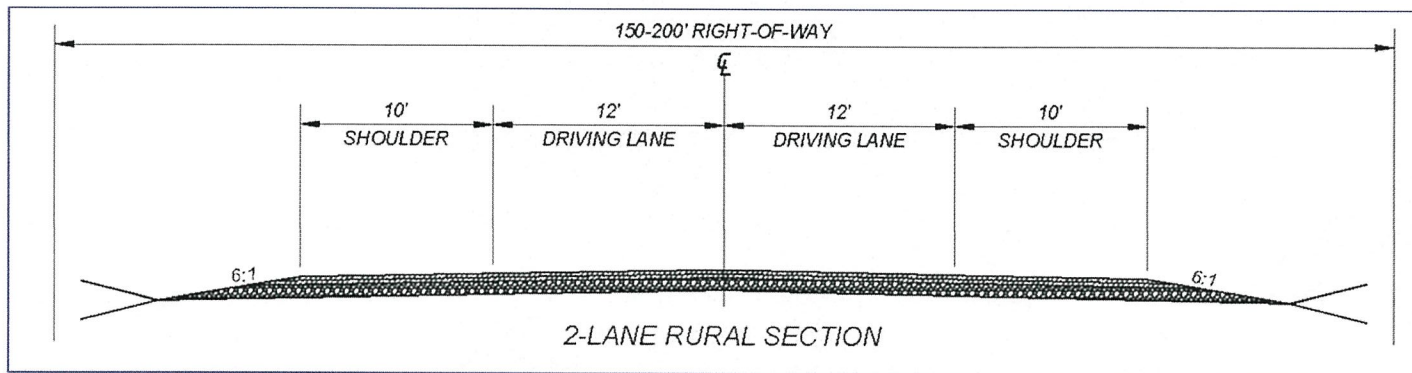
Project Benefits

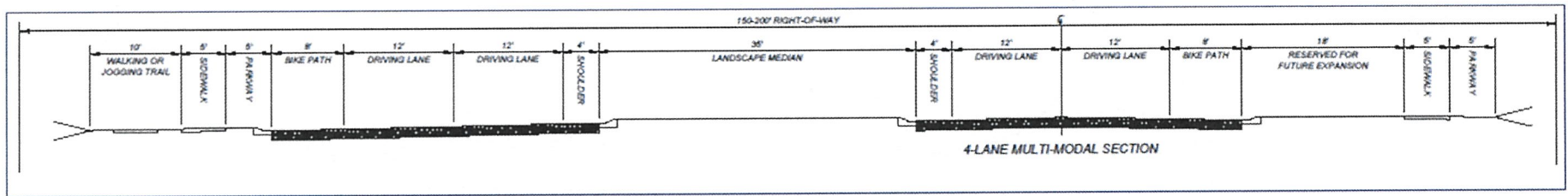
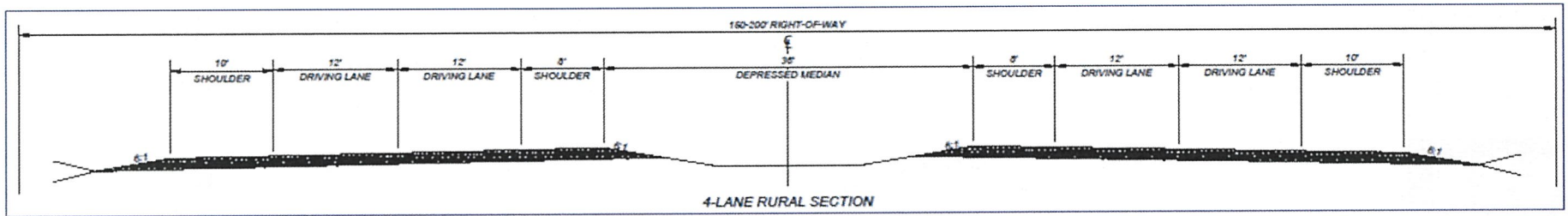
The new roadway:

- will significantly reduce drive times to and from the City of El Paso and major highways - Interstate 10 and Loop 375.
- will address congestion at EP/ CDJ ports by attracting increased POV and commercial traffic to the Santa Teresa – San Jerónimo POE.
- creates a comprehensive and efficient transportation network in the region that will support expected economic growth.
- improves connectivity between major ports in southern New Mexico and far west Texas.

The connector will be owned and maintained by the NM Department of Transportation.

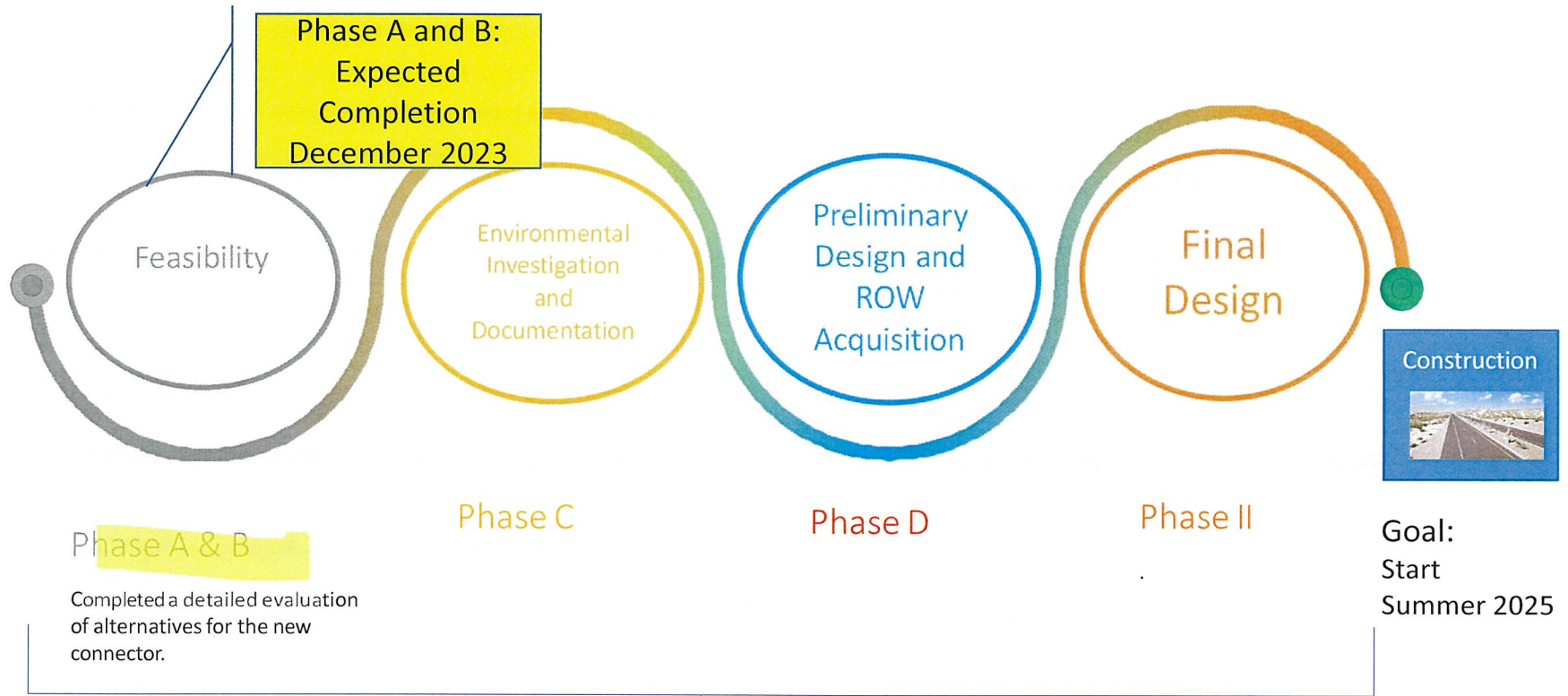






NM Border Highway Connector

Project Roadmap



Public involvement: after each phase of the project.

Santa Teresa Port of Entry

Expansion and Modernization

Priority Project: Santa Teresa Port of Entry

Expansion and Modernization



- **Port overview:**

- Opened in 1993 – the port only received minor improvements in 2011.
 - Since 2011 – POV traffic has increased by 58% and commercial traffic has increased by 125%.
- Santa Teresa is the designated oversized/ overweight port in the region.
- Second designated hazardous materials international crossing in the EP-JZ-NM region.
- Home to the largest livestock crossing of its kind in the nation.
- Ranked 6th in overall trade on the southern border.
- The majority of NM's 3.1 billion in exports cross through the Santa Teresa POE.
- Recently installed NII Technology allows faster inspections and greater security.

Project overview and Status:

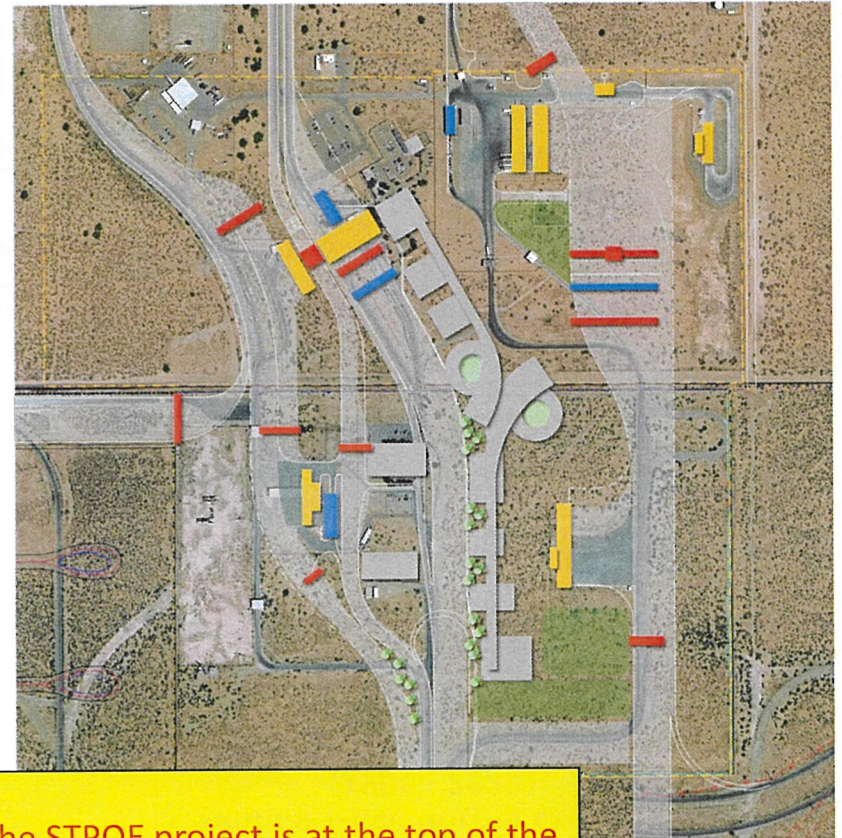
The **New Mexico Border Authority** secured a \$500,000 Congressionally Directed Spending (CDS) grant to launch the project feasibility for an expansion and modernization of the Santa Teresa POE.

The funding was assigned to U.S. GSA to complete the key first step.

Status:

- GSA kicked off the project feasibility in April 2023.
- The feasibility is expected to be completed in February of 2024.

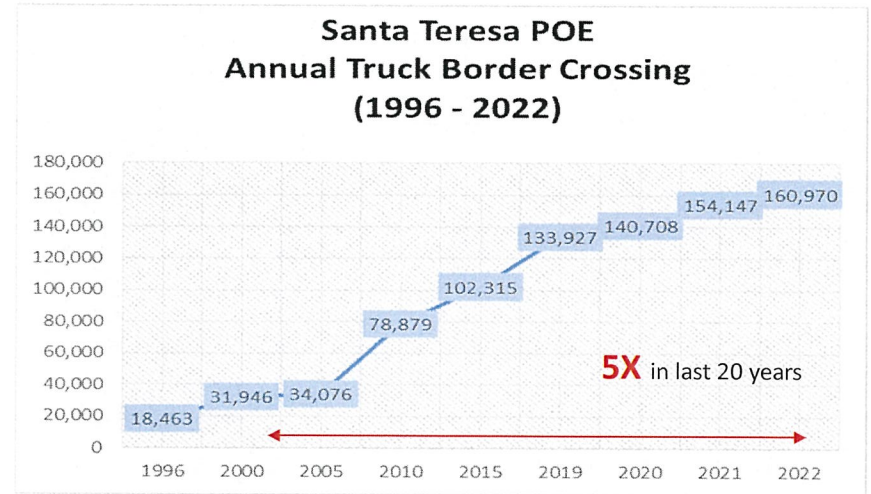
Estimated total construction cost: \$200 Million



The STPOE project is at the top of the funding list for U.S. CBP and GSA!

Project Justification:

- Commercial Crossings have grown five-fold in 20 years.
- The Santa Teresa Port of Entry lacks infrastructure enhancements to accommodate increasingly larger and heavier cargo. This is a key function of the port.
- The port has insufficient cargo/ POV lanes to accommodate expected growth into the future.
- On the cargo side, lane efficiency is reduced because of 90-degree turns.
- El Paso-Ciudad Juarez ports of entry are saturated with wait times averaging several hours vs less than 30 mins in the STPOE.
- The Government of Mexico also prioritizes the expansion of its sister port – Cruce Fronterizo San Jerónimo.



Doña Ana County Jetport

Runway Enhancements

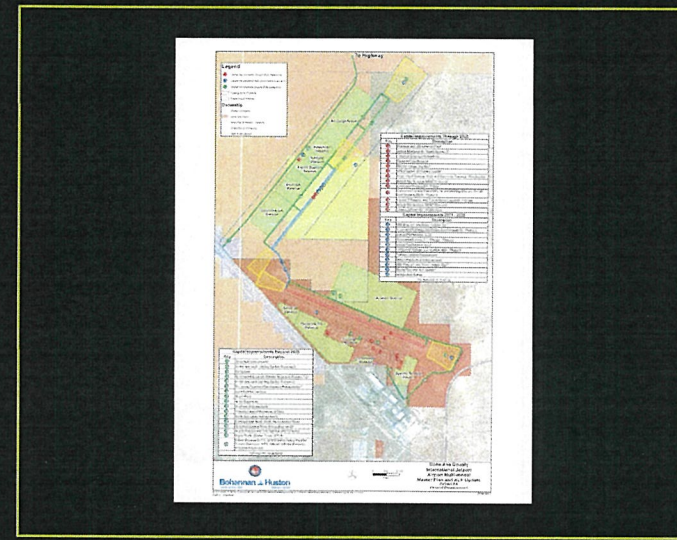


Doña Ana County Jetport Runway Enhancements

The state of New Mexico is investing \$20 million dollars at the DAC Jetport in Santa Teresa to upgrade the existing runway and allow heavy cargo airplane landings.

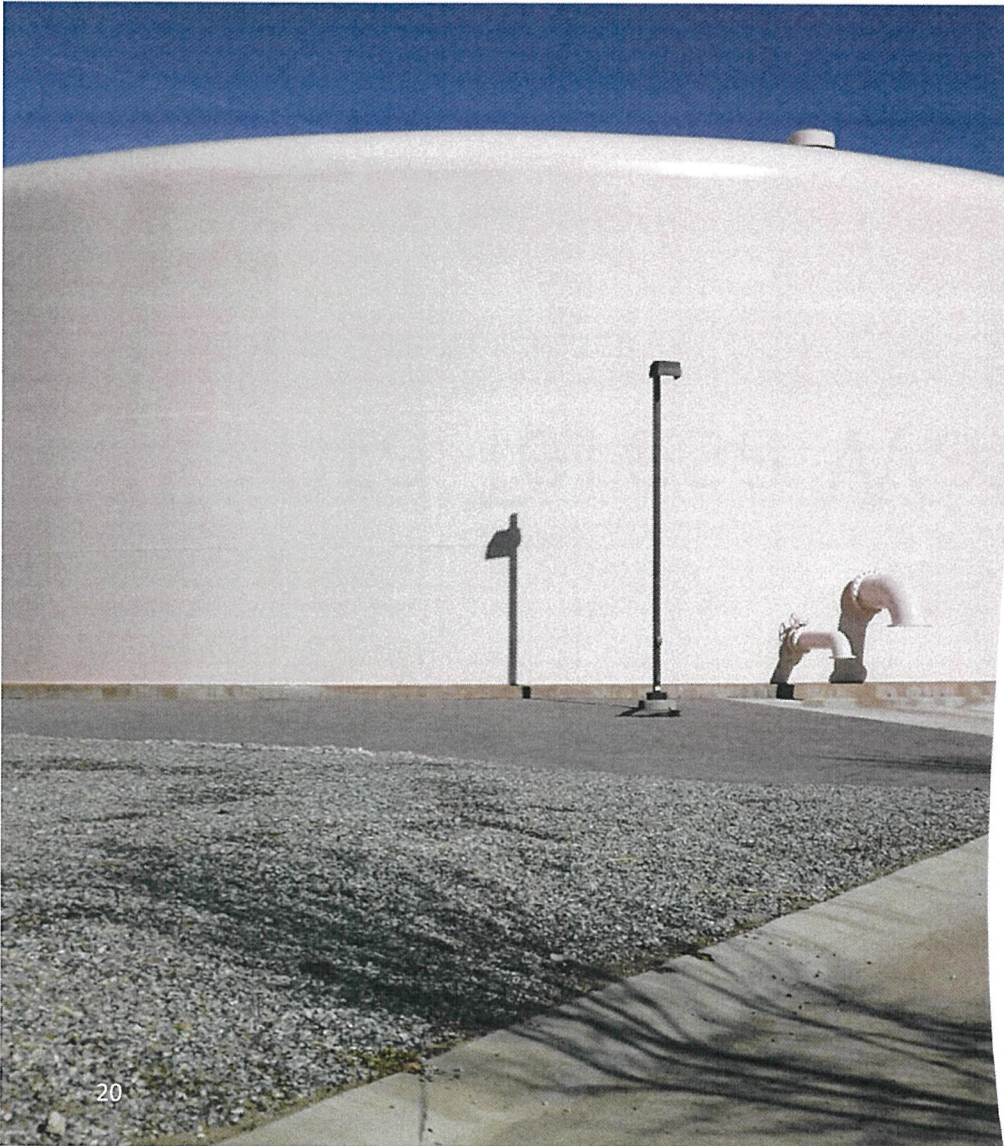
The runway Enhancements will allow a regular flow of 737- 800 aircraft, weighing up to 175,000lbs. Currently the weight capacity is 138,000lbs.

❖ **New runway:** the state and county are also planning the construction of a new runway at the Jetport that will allow heavier aircraft up to 747 and 777.



Santa Teresa Water Tank

1 Million Gallon Capacity



Santa Teresa 1M Gallon Water Tank

The **NMBA** secured \$6.5 million in state funding to construct a one-million-gallon water tank in the Santa Teresa Industrial Park.

The agency is partnering with the Camino Real Regional Utility Authority (CRRUA) to complete the project.

Need:

- The Santa Teresa industrial park regularly experiences dips in water pressure.
- The recurring issue affects the recruitment of companies.
- Emergency sprinkler systems affected: reports of businesses failing inspection due to water pressure dips.

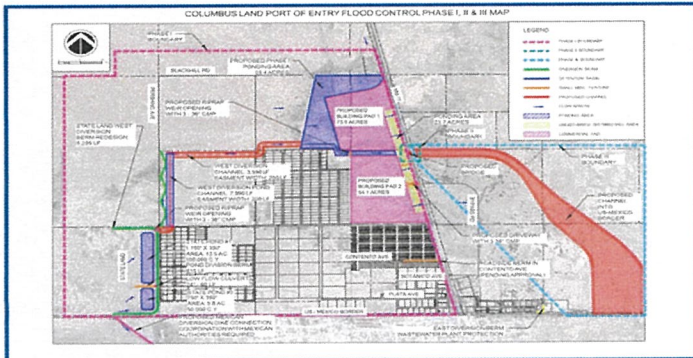
This project will support continued industry growth in Santa Teresa.



New Mexico Border Investments

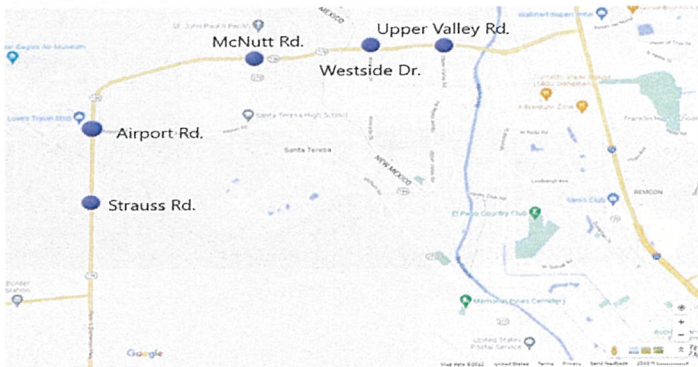
Facultative Wastewater Pond in Columbus, NM: To allow for future investment and increase much needed treatment capacity.

- The **NMBA** Secured \$1.6 million in state funding.
- The final redesign was completed and sent to the NM Environment Department for review and approval.



Luna County Berm Flood Control Project: to protect 1,355 acres of private and publicly owned land from regular flooding. Once constructed, the project will allow the region to take full advantage of their international port of entry to promote economic growth and create needed jobs.

- The **NMBA** and Luna County have secured close to \$20 million for the major flood protection project.



Grade Separations at major intersections on Pete V. Domenici Highway (NM136): The NM Department of Transportation is completing a feasibility to eventually allow traffic to continue uninterrupted at major intersections on the state highway heading to Interstate 10 in El Paso.

NEW MEXICO
BORDER AUTHORITY

Project Name	Stage of development			Funding Entity		Budget Goals		Funding source	Additional Comments	Project Cost
	Current Phase	Next Phase	Estimated Project Construction Start Date:	NMBA	Other	NMBA	Other	Eg: legislation, federal, etc	Additional funding needed, etc	Approximate Costs Only (Final construction costs may vary)
Border Highway Connector	Phase A Completed	Phase B (Estimated Completion: December 2023)	Summer 2025	\$3M	(NMDOT) +\$55M	Feasibility + Design	Construction	Capital Outlay, General Funding, USDOT	The NMDOT and NMBA will sign a Memorandum of Agreement - pending review by legal counsel.	\$58 million
Border Highway Connector Phase 2	Funding awarded to the NMBA during the 2023 Legislative Session.	Funding now available	TBD	\$2M		Feasibility		Capital Outlay	The feasibility project will determine the best route to extend the BHC to the Texas state line.	TBD
Luna County Berm Project	Land acquisition completed August 2023	1 Parcel remains to be purchased (Estimated Completion: July 2023)	Spring 2024	\$15.5M	(Luna County) 3.5M	Design + Construction	Construction	Capital Outlay, Congressionally Directed Spending, NM Water Trust Board	Final Design will determine if additional costs are expected.	\$20 Million
	Final Design (Estimated Completion: Dec. 2023)	RFP for Construction (January 2024)								
Santa Teresa Elevated Water Tank	Final design - pending IGA approval.	Complete Final Design (Estimated Completion: TBD)	TBD	\$6.5M		Design + Construction		Capital Outlay	The NMBA secured \$2M in cost overrun funding in 2023.	\$6.5 Million (For a 1-million gallon tank)
Columbus Facultative Wastewater Pond	Final design - pending approval from NMENV	Construction	Winter 2023	\$1.6M	(VOC) \$90K	Redesign + Construction	Design	Capital Outlay, Colonias Infrastructure	The NMBA secured \$1.15M in Cost Overrun funding.	\$1.6 Million
NMBA POV Parking Lot	Final Design (Completed Dec. 2022) Biological and Cultural Assessment (Completed April 2023)	The Federal Donations Acceptance Program (DAP) Agreement completion pending approval by NMBA and CBP/GSA attorneys.	Oct-23	\$651K + NMBA Est. Overage \$100K		Design + Construction		Capital Outlay, NMBA Enterprise Fund	The NMBA plans to cover additional fundings costs with Enterprise Funds. Additional costs related to an increase in the cost of building materials.	\$750 Thousand
NMBA Commercial Parking Lot	Engineering firm selected. Finalizing contract.	Design (Estimated Completion: TBD)	TBD	\$1.2M		Design + Construction		Capital Outlay	The NMBA is working with legal counsel to finalize the contract with selected vendor.	\$1.2 Million (to upgrade a portion of the property)
Santa Teresa POE Expansion and Modernization	Feasibility (Estimated Completion Date: Feb. 2024)	Design and Construction (Estimated Completion: TBD)	TBD	\$500K		Feasibility (GSA)		Congressionally Directed Spending	The STPOE is at the top of the funding priority list for U.S. GSA and CBP.	\$200 Million

Priority 2: Expanding Regional Collaboration

El Paso and Mexico

Partnerships Matter

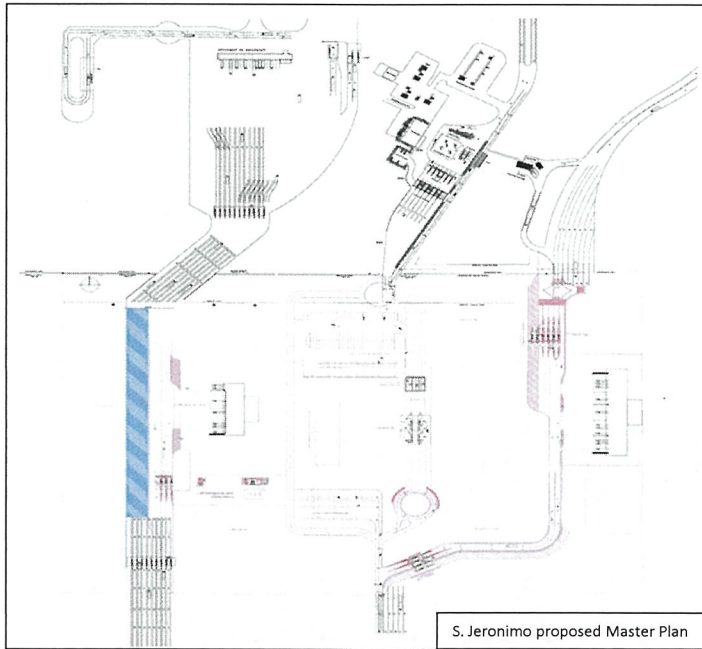
The NMBA and state agency partners including NMEDD and NMDOT have pressed the government of Mexico to mirror investments taking place on the U.S. side. Mexican officials recently released a master plan for a modernized and expanded San Jeronimo Port of Entry (Santa Teres's sister port). At a recent regional meeting in Ciudad Juarez, Mexican Federal Officials promised to work with the General Services Administration (GSA) to coordinate port expansion projects.

NMBA staff are co-leading Binational Border Infrastructure Roundtable discussions with partners in El Paso and Ciudad Juarez to promote regional collaboration and discuss infrastructure projects in each region. The NMBA director highlighted in a recent meeting the state's efforts to expand the Santa Teresa POE and construct the Border Highway Connector.

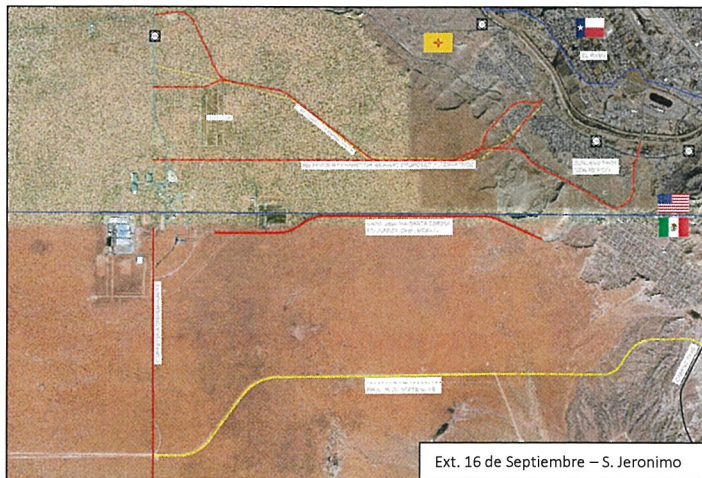
NMBA staff have strengthened partnerships with industry groups in Ciudad Juarez, including INDEX, CODER and CANACINTRA, which represent multiple sectors and promote investments that drive investment. *The agency is working with industry groups to collect a letter in support of a ST-SJ port expansion with signatures from each industry group.*

NMBA staff have also expanded partnerships with Ciudad Juarez and State of Chihuahua officials to advance other projects of importance to New Mexico—specifically, the construction of new roadway, which mirror's the state's Border Highway Connector, and would allow expedited and safer travel to San Jeronimo.

The NMBA has also prioritized expanding collaboration in New Mexico with local governments and industry groups. Agency staff attend regular meetings and provide presentations to industry groups and local officials, including the Border Industrial Association and Luna County Government, to provide updates, remain accountable to the region and stay informed on the needs.



S. Jeronimo proposed Master Plan

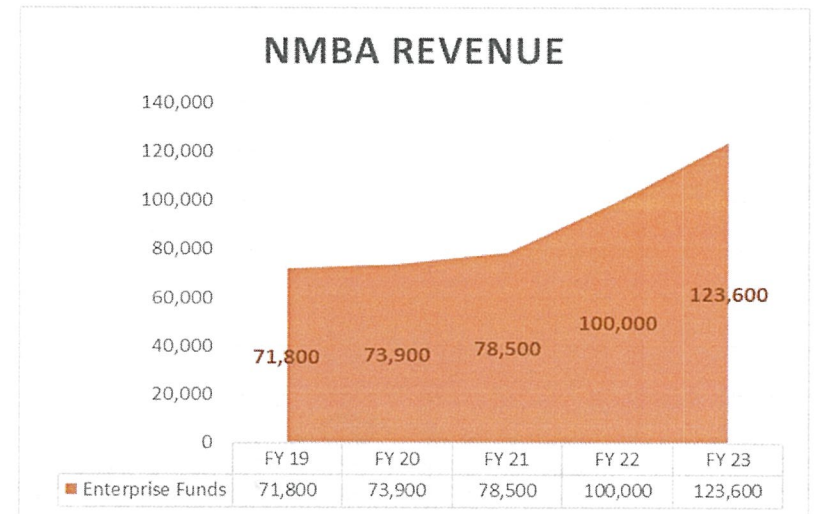


Ext. 16 de Septiembre - S. Jeronimo

Priority 3: Strengthening the NMBA

Creating a Path for Growth

- In four years, agency revenue has nearly doubled. NMBA staff continue to expand enterprise funding collected from the lease of agency properties.
- The NMBA successfully secured state funding for two internal projects that can boost revenue. The construction of a new private vehicle parking lot and updates to the existing commercial lot.
- The agency is requesting a slight increase in General Funding, which would free enterprise funds, currently used for operations. The additional enterprise funding can be reinvested in the border region, cover emergencies and pay for revenue generating projects.





A Team Effort...

The Border Authority team understands the border region, we are all *fronterizos*, and we are committed to having a greater impact in the region, and creating opportunities to enhance the quality of life of the residents we serve.



¡Gracias!

Marco Grajeda

Executive Director

(575) 997-8186

Marco.Grajeda@nmba.nm.gov