



HEALTH & HEALTH SCIENCES

YOLANDA SANCHEZ, PHD

DIRECTOR AND CEO

UNM COMPREHENSIVE CANCER CENTER

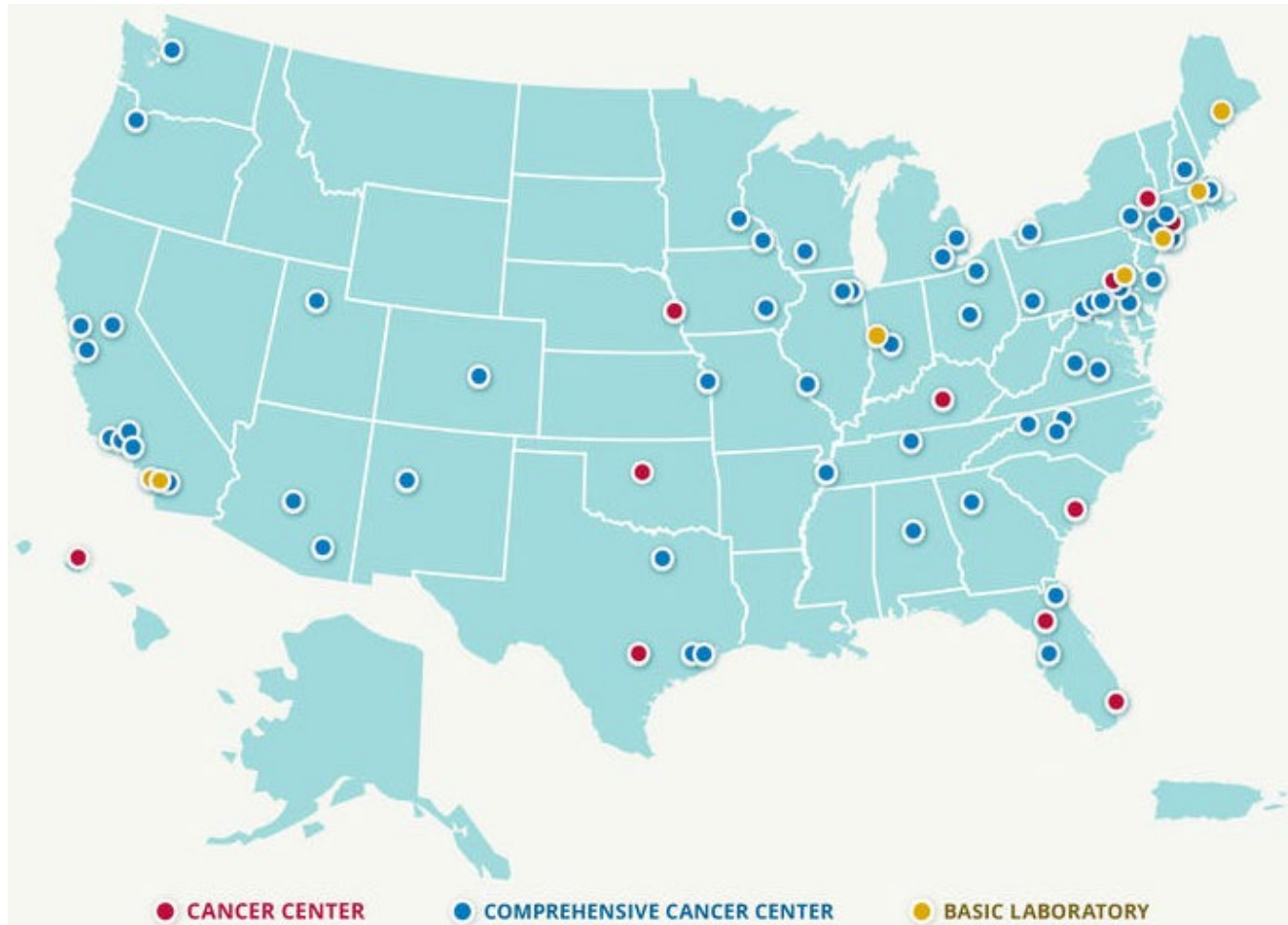


We are **GRATEFUL** for you and your support of our UNM Health and Health Sciences patients, faculty, staff, and students / learners



UNM Comprehensive Cancer Center

One of 57 NCI-designated Comprehensive Cancer Centers



72 NCI Cancer Centers

- Top 3% of Cancer Centers in the Nation
- 36 States
- Core of NCI Extramural Research Mission: >85% Extramural Budget
- Discovery science engine for translation to clinical trials and interventions
- Deeply engage communities and build community networks
- Train the nation's cancer workforce

UNM Comprehensive Cancer Center: Mission

Lawrence G.
Thyroid Cancer
Survivor



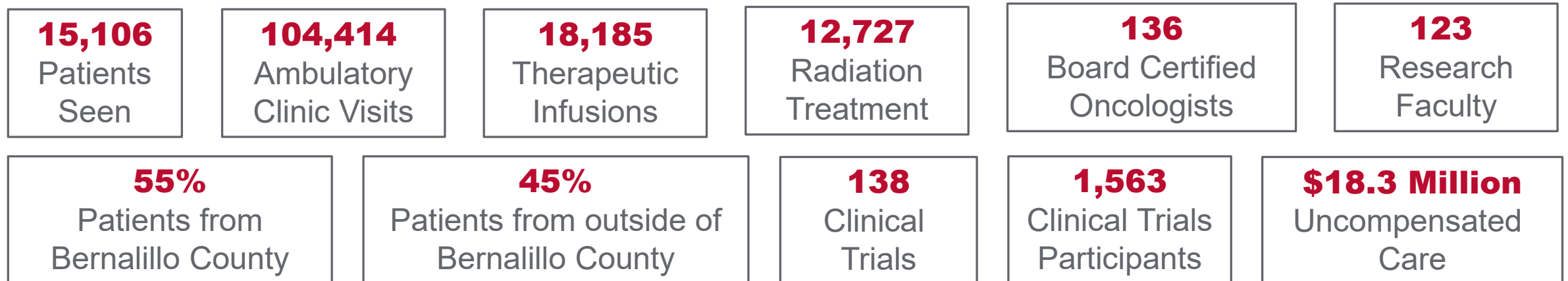
To reduce the cancer burden and overcome the tremendous cancer health disparities in New Mexico and the nation through:

- Ground-breaking transdisciplinary research inclusive of novel clinical trials
- Translation of discoveries to community, prevention and clinical interventions
- Impactful and respectful bi-directional community engagement
- Education and training of a more diverse cancer workforce and future leadership
- Delivery of exceptional patient centered cancer care

What Makes the UNM Comprehensive Cancer Center Unique

- The Official Cancer Center of the state of New Mexico
- The only cancer center in New Mexico to hold the elite NCI Comprehensive Cancer Center designation, delivering cancer treatment not available elsewhere within a 500-mile radius.
- Conducts cutting-edge cancer research and translates discoveries to interventions
- Our patients receive state-of-the-art care all in one place: expert multi-disciplinary treatment planning; access to novel clinical trials; and personalized treatment.

UNM Cancer Center by the Numbers (2024)



Advancing Cancer Research

- Conduct outstanding laboratory, translational, clinical, and community research, focused on discovering the causes and cures for cancer, particularly those cancers that disproportionately affect the minority and underserved populations of New Mexico, and to translate our discoveries into more effective means to prevent, diagnose and treat cancer.
- To enhance economic development through science and discovery efforts.



*tobacco settlement

State of the Art Clinical Cancer Care

What it means to be diagnosed and treated at an NCI-designated comprehensive cancer center

- Provide access to the newest cancer diagnostic, preventive agents, and treatments in a robust statewide cancer clinical trials program
- State of the art Tools and Technologies: Radiation Oncology & Bone Marrow Transplant
- Patient and Family Support Services
- Improving access to cancer care throughout New Mexico regardless of ability to pay



*tobacco tax

Overcoming the Cancer Health Disparities in New Mexico through bi-directional Community Engagement and Research

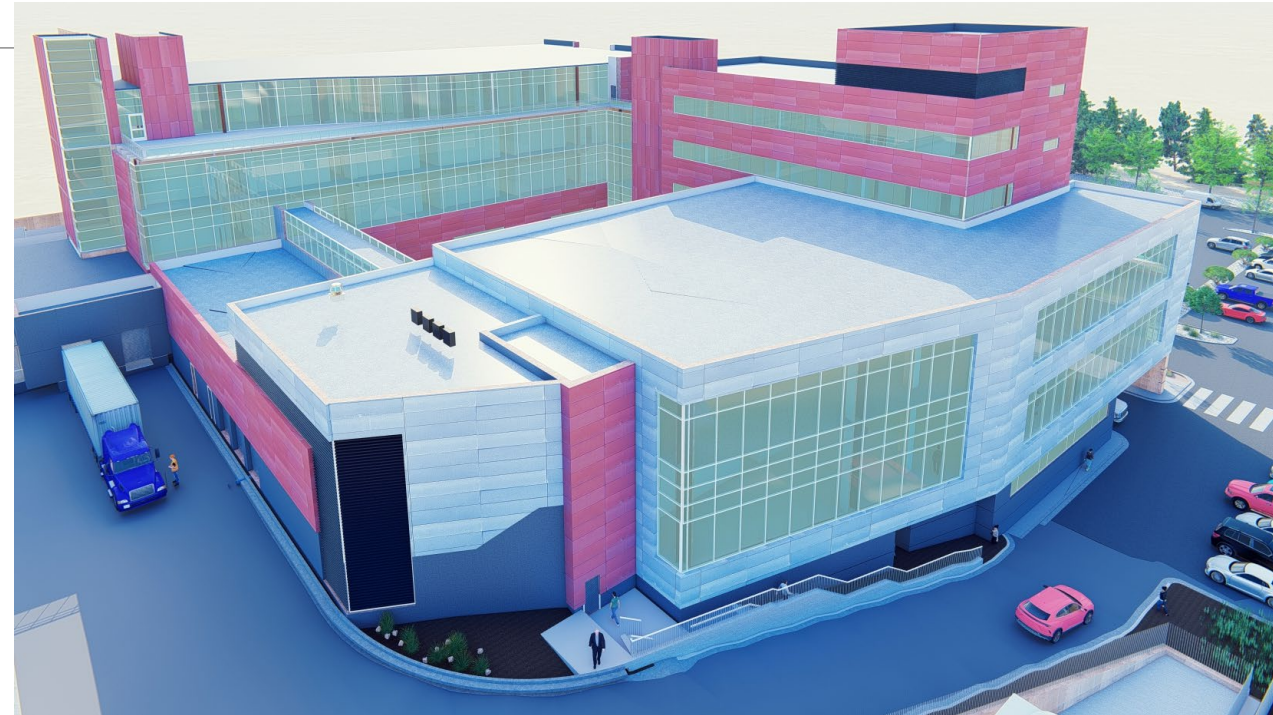
Challenging Health and Socioeconomic Disparities

- Per Capita Income: 48th
 - 32/33 Counties: Medically Underserved
 - 43%: Medicaid Waiver
 - 8% - 13%: Medically Uninsured
 - 25% Patients:
No Primary Care Provider
- To reduce New Mexico's cancer burden by discovering the genetic, environmental, social, and behavioral factors that contribute to the distinct patterns of cancer incidence, mortality, and disparity in our populations
 - Education, outreach and access to cancer prevention and screening program.



Building for the Future: Expanding Research and Treatment Space at the Cancer Center to meet the growing demand for cancer care in New Mexico

- Space for state-of-the art radiation oncology technologies and procedures
- Theranostics
- Provide access to newer cancer treatment that can only be made through UNM: Bone Marrow/Stem Cell Transplantation – UNM CCC is the only accredited program in NM, CAR-T
- Space to expand clinical research and workforce training programs.
- Groundbreaking December 14, 2023



Rodney Martinez
Chief Financial Officer



- 2021 - HB285: **\$3M**
HSC – Matching Funds. **\$1.25M**
- 2021 - SB 223, NMFA Bond: **\$29.1M***
- 2023 - HB505: **\$5M**
HSC -Matching Funds \$4.1M

*Cigarette tax

2023 HED **15M**

Building for the Future: New Programs and Investments

- Radiation Oncology
- Cell Based Immunotherapies
- Theranostics*
- Survivorship
- Lung Cancer Screening#
 - Launched October 1, 2023
 - Disparity Cancer for Native Americans in NM



Key Collaborators Pulmonology# Radiology # and Nuclear Medicine*



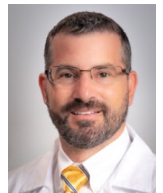
Akshu Balwan, MD
Critical Care Medicine,
Pulmonary Disease



Shana Elman, MD
• Chief Nuclear Medicine
• Radiology/Nuc Med



Thomas Anderson, MD
• Director of Therapeutic
• Radiology/Nuc Med



Reed Selwyn, PhD
• Interim Chair, Radiology
• Radiology/Nuc Med

THANK YOU!

