

Community Schools: A Strategy for School Transformation

Angelo J. Gonzales, Ph.D., Deputy Secretary (interim), School
Transformation & Innovation

November 15, 2022

Investing for tomorrow, delivering today.



Key Points

- Community schools are an evidence-based strategy for improving student outcomes in the schools with greatest need in New Mexico.
- Community schools are transformational.
- We need to expand the support available to these schools to sustain and deepen their impact.



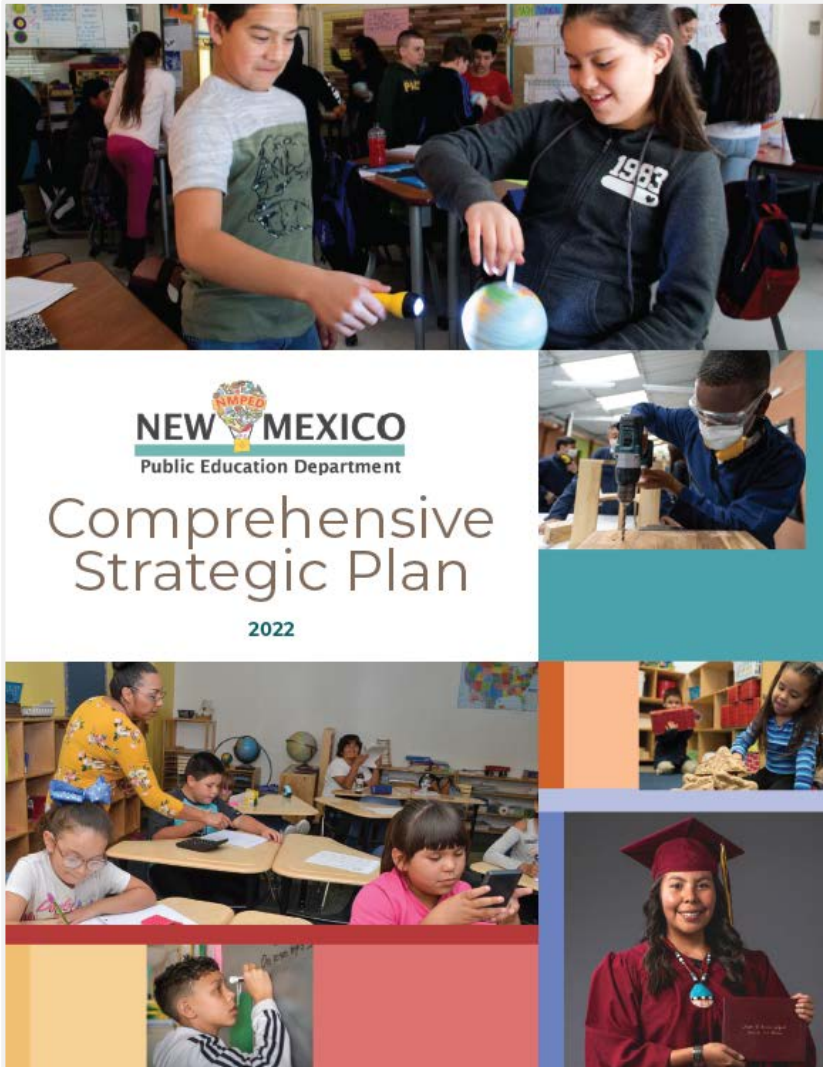
Presentation Overview



Why Community Schools?




Setting the Context



NEW MEXICO
Public Education Department

Comprehensive Strategic Plan

2022



Community Schools as an Effective School Improvement Strategy: *A Review of the Evidence*

Anna Maier, Julia Daniel, Jeannie Oakes, and Livia Lam

LEARNING POLICY INSTITUTE **NEPC**
NATIONAL EDUCATION POLICY CENTER

DECEMBER 2017



Community Schools the New Mexico Way

Jeannie Oakes and Daniel Espinoza

LEARNING POLICY INSTITUTE

JANUARY 2021

Strategic Plan Priorities



**Educator
Ecosystem**



**Whole Child and
Culturally/Linguistically
Responsive Education**

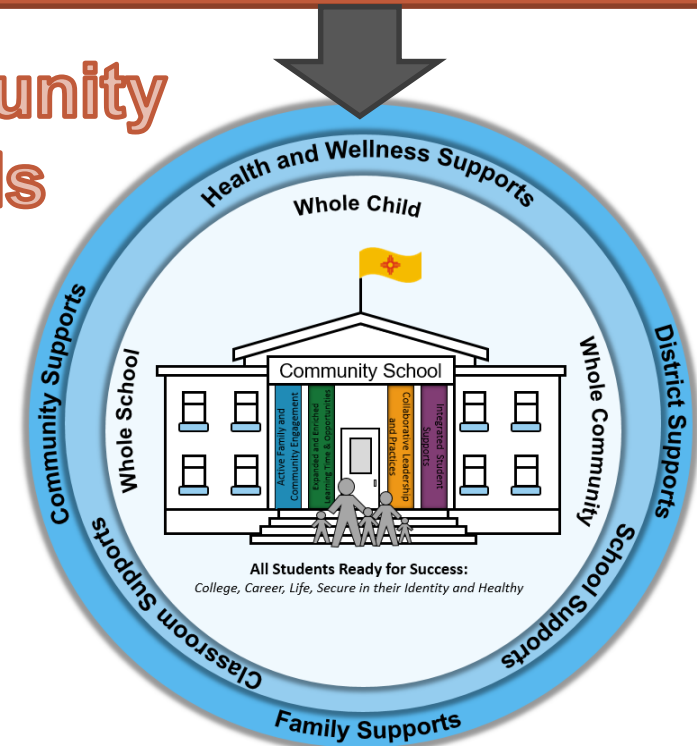


**Profiles and
Pathways**

IV

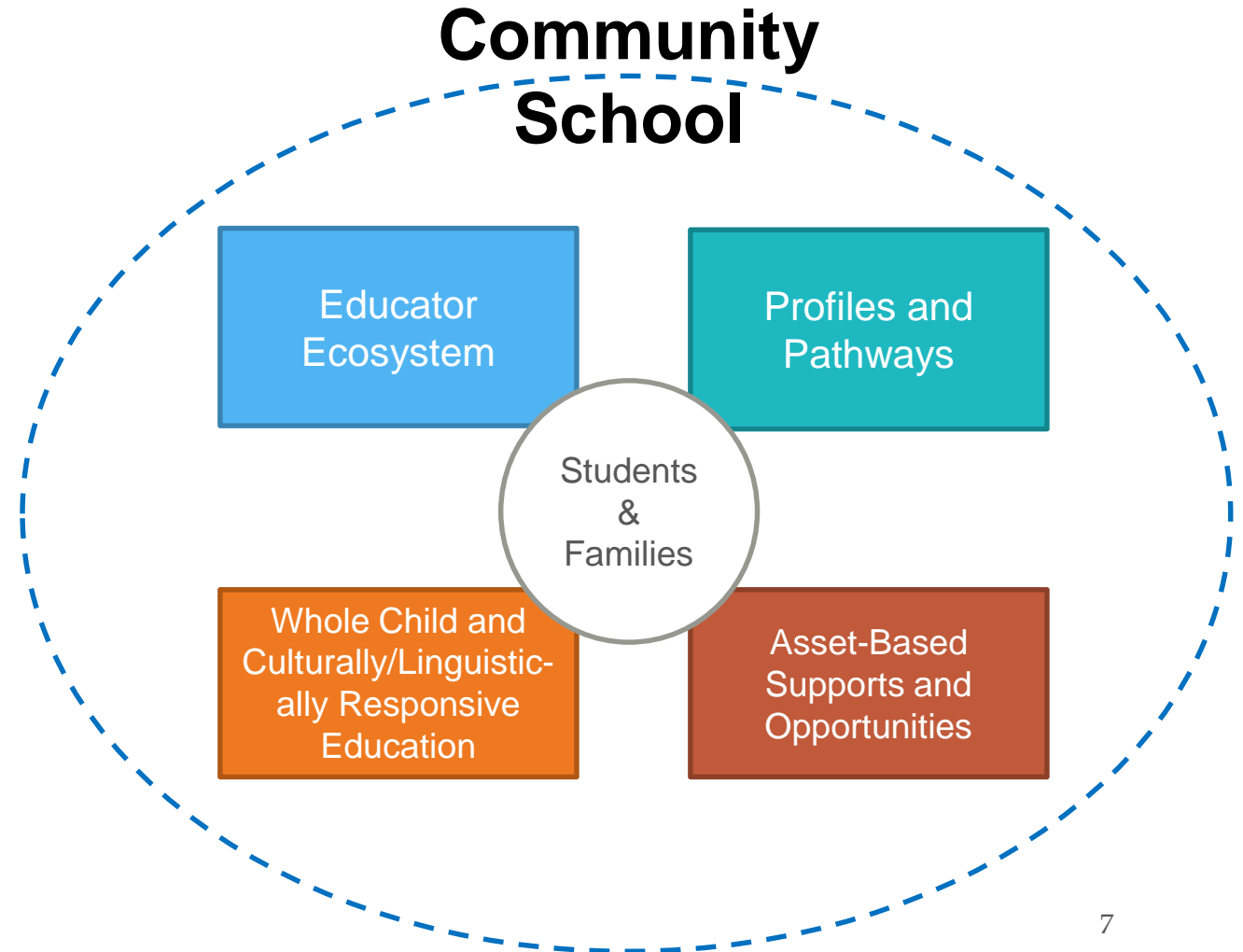
**Asset-Based Supports
and Opportunities**

**Community
Schools**



Community Schools Are a School Transformation Strategy, Not a Program

Community schools bring together all four strategic priorities by placing students and families at the center and redefining the relationship between schools and their communities.



Three Faces of Community Schools

1. A public school that serves as **the hub** of its neighborhood, uniting students, families, educators, and community partners.
2. A local **engagement strategy** that strengthens families and the community by serving as a vehicle for **hyper-local decision-making** that responds to the **unique needs** of each community.
3. An **evidence-based school transformation strategy** that promotes **equity** and educational excellence for **every child**.

How Does a Community School Enable School Transformation?

- Conduct regular needs assessments to identify and mitigate the root causes of barriers to learning.
- Use data to:
 - Provide targeted support to students;
 - Develop whole-school engagement strategies; and
 - Advocate for resources and policies to remove systemic barriers.
- Leverage community assets to support student and family needs.
- Create collaborative leadership structures to enable actionable decision-making among, school staff, students, families, and community partners.

The Community Schools Act is the Foundation for Community Schools in New Mexico

- **Community School Framework**
 - Required “four pillars” (see graphic)
 - Optional pillars: broader use of school facilities, community-based curriculum, public pre-K and early childhood services
 - Lead partner agency
 - Community school coordinator
- **Grant Program**
 - Planning year (up to \$50K)
 - 3 years of implementation (\$150K/year)
 - Optional 4th year (funding level determined by PED)
- **Coalition for Community Schools**
 - Advocacy, capacity building, and technical assistance
 - Grant application review and recommendations



Community Schools Engage Students and Families to Support Better Attendance



Community Schools Also Provide a Process and Structure to Implement the Attendance for Success Act

Attendance for Success Act

- **Use data** to identify chronically absent students and those at risk of becoming chronically absent.
- **Convene an attendance team** to identify root causes of absenteeism at the student and group levels.
- **Connect students to support and interventions** to address root causes of absenteeism and reengage students in school.
- **Address systemic barriers** through changes in policy and practice in the school and school district.

Community Schools

- **Use data** to identify student, family, and community needs and assets.
- Convene a **site-based leadership team** to identify individual and systemic barriers to learning.
- **Connect students and families to support and interventions** to address barriers and deepen engagement in the life of the school.
- **Address systemic barriers** through changes in policy and practice in the school, community, and school district.

Community Schools Snapshot



Community Schools in New Mexico

Fiscal Year	Funding - State	Funding - Federal	# of Community Schools
2019-20	\$2,000,000	-	29
2020-21	\$3,300,000	\$1,896,000	33
2021-22	\$5,000,000	\$1,836,622	54
2022-23	\$8,000,000	-	69

State-Funded Community Schools in New Mexico



2022-23

- 21** Planning Grant Schools
- 19** Implementation Grant Schools Year 1
- 23** Implementation Grant Schools Year 3
- 6** Implementation Renewal Year 4

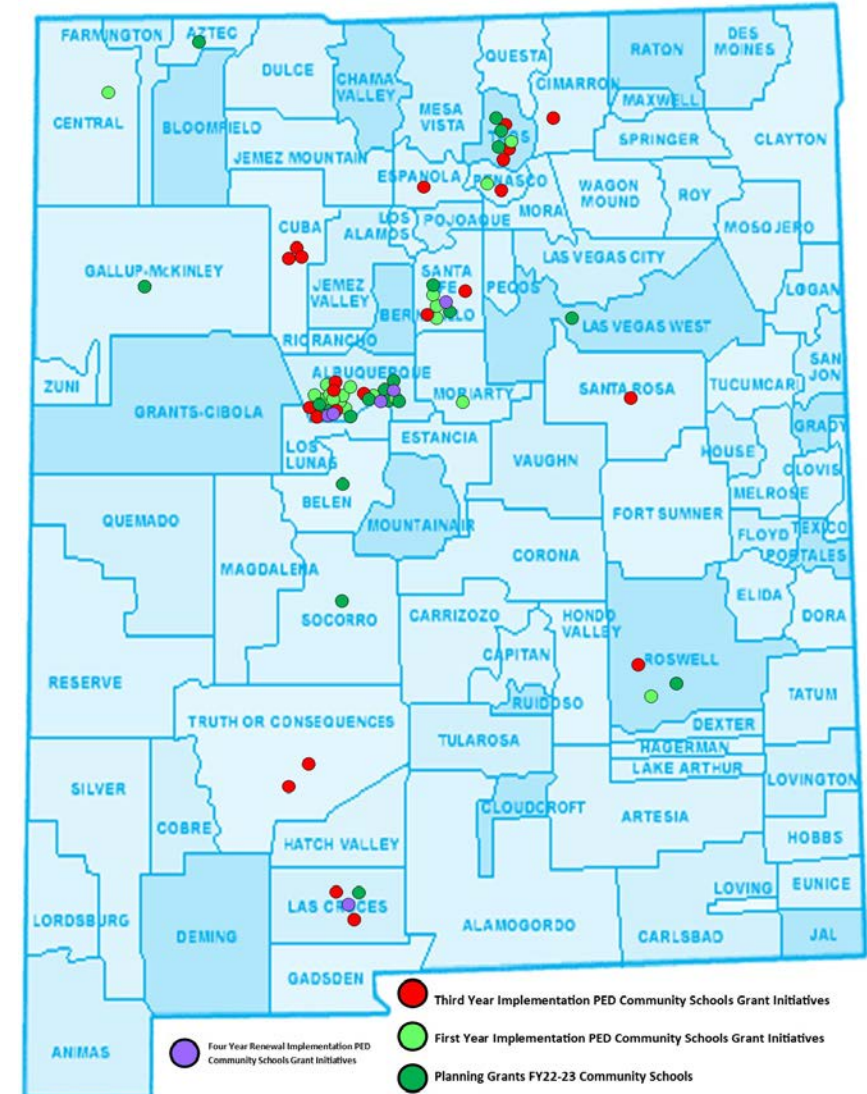
69 Schools funded by the Public Education Department

Community Schools Development



Community Schools in New Mexico Overview

- **Community Schools Expansion in Current Year**
 - 69 NM PED-funded Schools
 - ✓ 48 in the implementation phase
 - ✓ 21 in planning phase
- **Urban and rural communities and including indigenous communities.**



Community Schools Developmental Levels



Planning Grants

- One Year
- Up to \$50,000 dollars for:
 - Needs assessment
 - Asset mapping
 - Developing a community-wide and site-based leadership teams
- Prepare and support schools culture and climate around the strategy.

Source: Ch. 22, art. 32 NMSA 1978, <<https://laws.nmonesource.com/w/nmos/Chapter-22-NMSA-1978#!b/a32>>, retrieved on 03/19/2020.

Implementation Grants

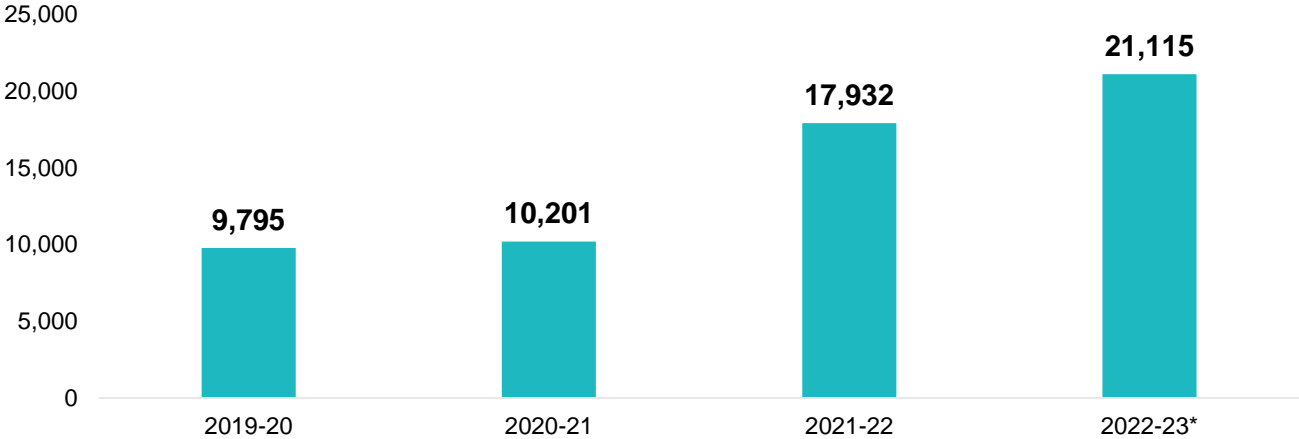
- Annual implementation grants of \$150,000 each year for a period of three years
- Hire a full-time Community Schools Coordinator
- Address the four pillars of community schools:
 - Integrated student supports
 - Expanded and enriched learning time and opportunities
 - Active family and community engagement
 - Collaborative leadership and practices
- The school becomes a hub of student and family supports

Implementation Renewal Grants

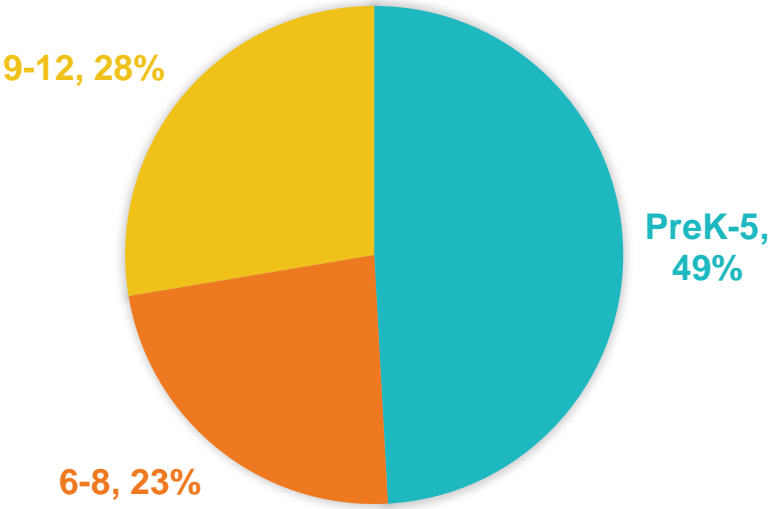
- An additional one year of funding was granted to schools in their fourth year
- Up to \$75,000 to initiate a sustainability plan for the community school coordinator position

Community School Demographics

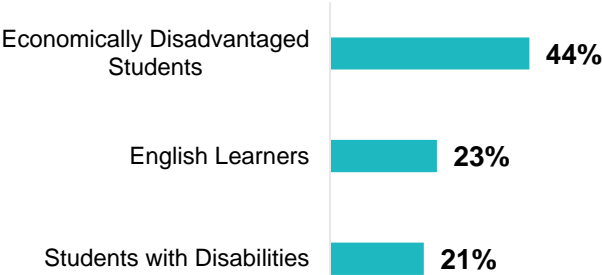
Enrollment by School Year



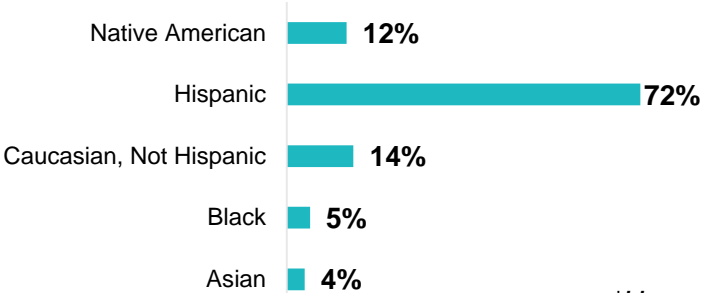
Enrollment by Grade Level, 2022-23*



Enrollment by Student Group, 2022-23*



Enrollment by Race/Ethnicity, 2022-23*



*Uncertified 2022-23 STARS Data (subject to change)

The Path Forward



Goal

Increase the number of community schools in New Mexico from 69 to a minimum of **100** by the 2023-24 school year.

Priorities

- **Grant Program:** Continue providing community schools planning and implementation grants to new and existing community schools to build the foundation for whole-school transformation.
- **Certification:** Develop a new statewide “certification” process for schools that are transitioning out of the grant program in order to sustain their work.
- **Professional Learning:** Provide professional learning opportunities to community schools coordinators, educators, and principals and encourage increased participation in these opportunities.
- **Capacity Building:** Expand technical assistance to community schools as they transition from the grant program into the certification process.

Recommendations

- Increase funding for community schools grant program to \$11.5 million in FY24 to surpass the goal of 100 community schools.
- Support continued state funding for certified community schools.
- Support funding for capacity building and technical assistance for community schools to fully implement the model and deepen their impact.

Questions



What the Four Pillars of Community Schools Look Like In Action

Enrichment activities emphasize real-world learning and community problem solving.

After-school, weekend, and summer programs provide academic instruction and individualized support.

Parents, students, teachers, principals, and community partners build a culture of professional learning, collective trust, and shared responsibility using strategies such as site-based leadership teams and teacher learning communities.

Collaborative Leadership and Practices

A dedicated staff member coordinates support programs to address out-of-school learning barriers for students and families.

Expanded and Enriched Learning Opportunities

Promoting interaction among families, administration, and teachers helps families to be more involved in the decisions about their children's education.

Schools function as neighborhood hubs. There are educational opportunities for adults, and family members can share their stories and serve as equal partners in promoting student success.

Active Family and Community Engagement

Mental and physical health services support student success.

Integrated Student Supports



LEARNING POLICY INSTITUTE

Research, Action, Impact.

LearningPolicyInstitute.org
@LPI_Learning
facebook.com/LearningPolicyInstitute

Source: https://learningpolicyinstitute.org/sites/default/files/product-files/Community_Schools_Effective_INFOGRAPHIC.pdf