

# 2024 LHHS Update, UNM Children's Hospital Section on Child Safety and Well-Being

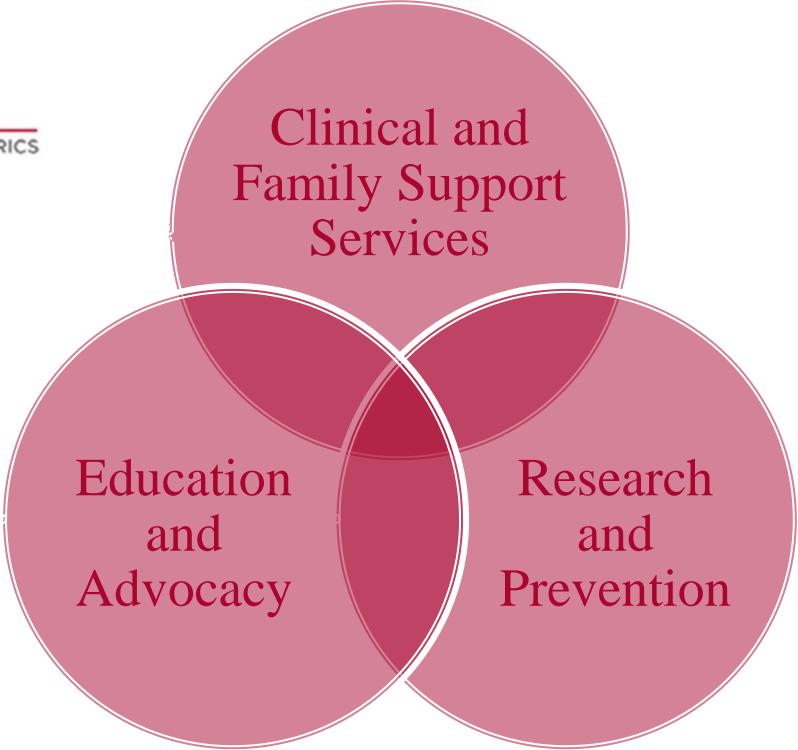
Leslie Strickler, DO  
Rebecca Girardet, MD

<https://hsc.unm.edu/medicine/departments/pediatrics/divisions/childsafety/>

# Section on Child Safety and Well-Being



Healthy Beginnings



Child Abuse Response Team

# Clinical and Family Support Services

- Medical care for physical abuse, sexual abuse, emotional abuse, neglect, and foster care
- Therapy for children with problem sexual behaviors
- Counseling about healthy relationships
- Crisis intervention
- Teen sexual assault support group (Segura Y Fuerte)
- Case management services



# Child Abuse Response Team (CART) Update

- Service to >700 patients FY24
- Areas of service expansion
  - Illicit/controlled substance exposures
    - Significant morbidity associated with fentanyl, THC, and cocaine/stimulants
  - Housing Instability and Child Well-being
  - Increased direct social work support and follow-up
  - Legal case review for NM children affected by maltreatment who did not receive evaluation at UNM

# Para los Ninos Update

- Service to patients FY24
- Areas of Service Expansion
  - Care for children affected by problematic sexual behavior and children with behavioral concerns
    - Therapy program for children causing sexual harm
  - Planned addition of child trauma therapy program and caregiver support group FY25
  - Anticipated addition of 3<sup>rd</sup> full-time board certified child abuse pediatrician, January 2025!

# Healthy Beginnings Foster Care Clinic Update

- Implementation of updated patient intake/tracking processes
  - MOU with CYFD to facilitate access to case assignments and placements for shared patients
- Collaboration with CYFD to meet ESPDT requirements
- Updated system for managing electronic medical records notifications of children in protective custody

# Education and Advocacy

- ACGME-accredited fellowship program
- SafeCare ECHO
- UNM Injury Prevention Coalition
- Child Abuse Awareness and Prevention Month



# Child Abuse Pediatrics Fellowship

- 2023 – 11 applicants for ~30 open positions nationally
- 2024 Interviews late summer





# School of Medicine (SOM) Child Abuse Pediatrics Education


- FY24
  - 12 pediatric resident physicians
  - 3 pediatric emergency medicine (PEM) fellows,
  - 3 medical students
  - 1 pre-medical student
- FY25 scheduled
  - 11 pediatric resident physicians
  - 3 PEM Fellows
  - 5 medical students
  - 3 pre-medical students


# SafeCare NM ECHO Update

Active  
participants  
 98

Avg  
Attendance  
 21.1

Participant Learning  
Sites  
 98

Sessions  
 16

Learning  
Hours  
 20

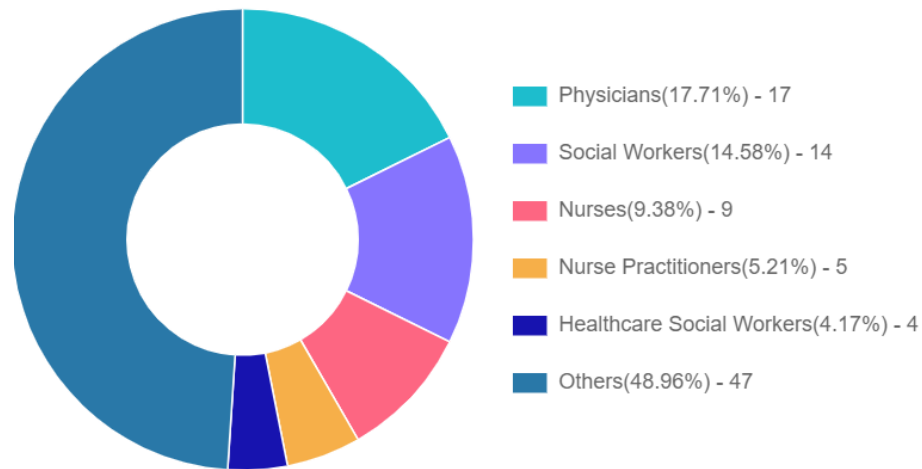
Cases  
Presented  
 1

Countries  
 3

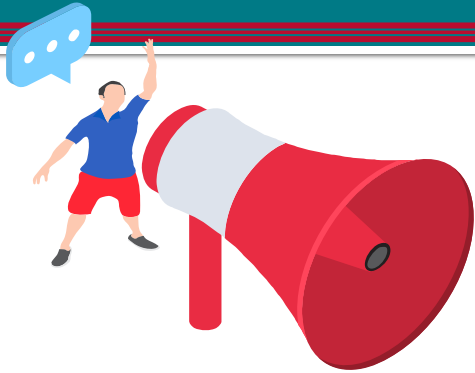
# SafeCare NM Participant Geographic Distribution



## Profession Distribution



# What people are saying...



**Like the ability to collaborate with members of the team, including law enforcement, CYFD, medical, legal, etc.**

**Participants liked the interactive platform (for trainings) and the capability to include providers statewide.**

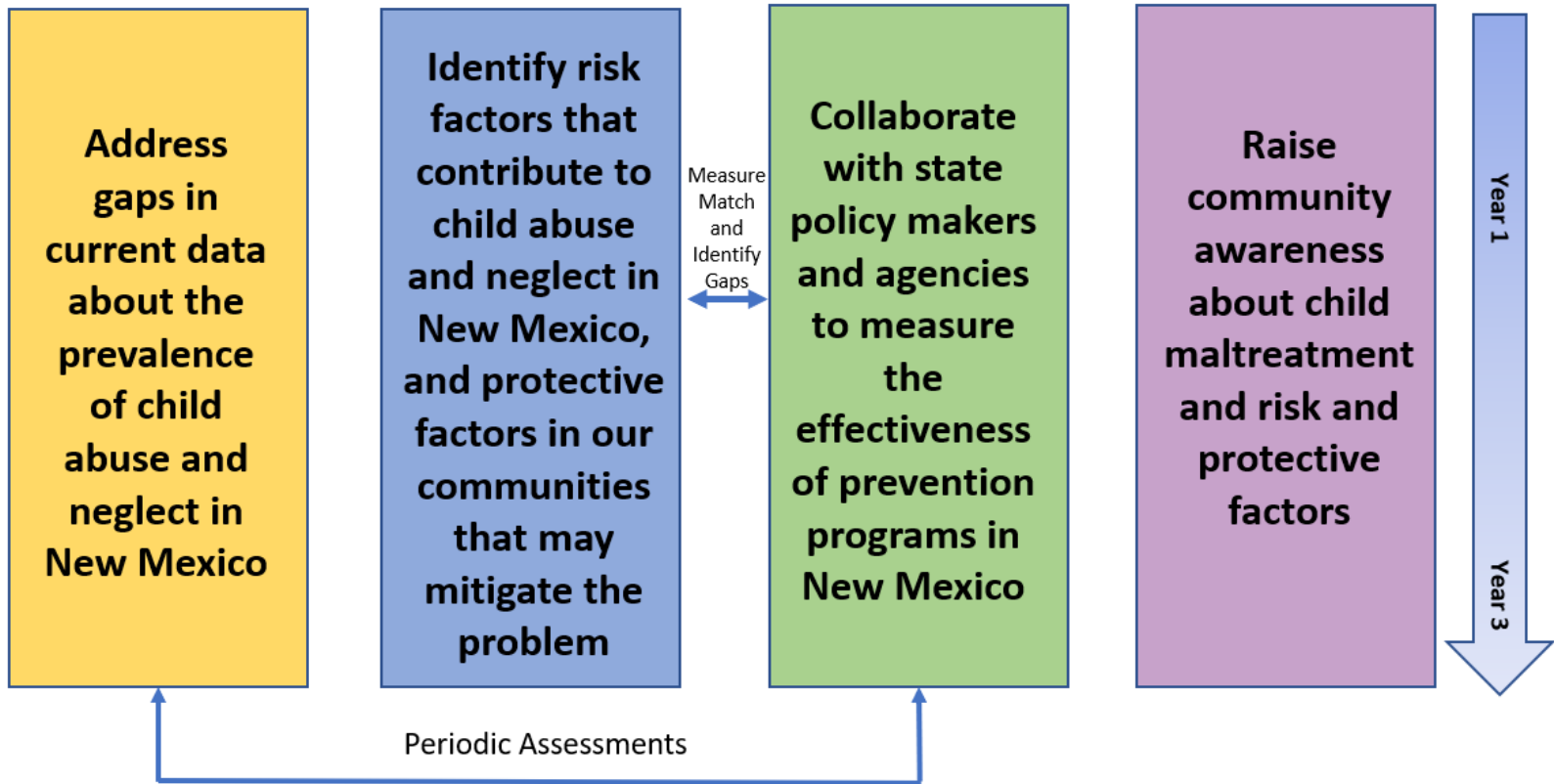
**Great content...  
Relevant topics...  
Organized, interesting, and useful...**

**Comfortable and open place to discuss tough situations and get feedback on addressing those situations**

# Injury Prevention and Child Abuse Awareness Events



# Research and Prevention



# Active Research and Scholarly Initiatives

- Accidental Fentanyl Exposure in Children 0-5 years of age: A case series study of pre-hospital and hospital clinical presentation, evaluation and management in New Mexico
- Outcomes of Shaken Baby Syndrome Education and Prevention Initiatives
- Medical Evaluations of Children Affected by Torture and Strangulation
- Teacher Familiarity and Utilization of Child Abuse and Neglect Resources Within Albuquerque Public Schools
- Safe Home Storage of Controlled/Illicit Substances
- Child Maltreatment Prevalence/The Grand Challenge



## Child Health

<https://grandchallenges.unm.edu/childhealth.html>





# Current projects

## Measuring child maltreatment incidence and community protective factors in New Mexico

PI: Rebecca Girardet, MD, Professor, Department of Pediatrics

Co-PI: Gabriel Sanchez, PhD, Professor, Department of Political Science, and Executive Director, UNM Center for Social Policy

Co-PI: Sara Nozadi, PhD, Assistant Professor, Department of Pharmacy

Community Research team members: Dr. Royleen Ross, Dr. Deana Around Him, Dr. Johnney Lewis, Dr. Olivia Lindly

## Child Maltreatment Prevalence in New Mexico

PI: Alexis Grasse, DO, senior resident, Department of Pediatrics

Co-PI: Rebecca Girardet, MD, Professor, Department of Pediatrics

Co-PI: Leslie Strickler, DO, Professor, Department of Pediatrics

Co-PI: Garon Bodor, MS, Research Coordinator, Office of the Medical Investigator

## Do We Care Enough About Child Maltreatment? – Understanding Public Perspectives on Child Maltreatment in the United States using Social Media Big Data

PI: Xi Gong, PhD, Assistant Professor, Department of Geography and Environmental Studies, and Director, Spatially Integrated Social Science Lab

Co-PI: Rebecca Girardet, MD, Professor, Department of Pediatrics

Yanhong Huang, doctoral student in the UNM Department of Geography & Environmental Studies

Yujian Lu, doctoral student in the UNM Department of Geography & Environmental Studies

## New Mexico Prekindergarten and its Short-Term Effects on County-Level Female Employment and Child Maltreatment

PI: Kira Villa, PhD, Professor, Department of Economics

# Competitive grant awards

- Crime Victims Reparation Commission (3 awards)
  - CSA medical and social services
  - Child mental health therapies
  - Support groups
- WK Kellogg Foundation
  - Statewide survey on child maltreatment and community protective factors
  - Parenting focus groups
- Federal appropriation
  - Statewide survey on child maltreatment and community protective factors
- UNM Grand Challenge
  - Seed funding for child maltreatment prevention research and education

# Challenges and Opportunities

- Siloed clinical and administrative spaces and staff undermines efficiency and requires duplication of efforts
- High emotional burden and limited compensation ceilings contributes to staff turnover, and challenges recruiting/retaining

# Thank You!

