



HEALTH CARE
AUTHORITY



LFC: MEDICAID WAIVER FOR PRISON RE-ENTRY SERVICES

DEPUTY SECRETARY ALEX CASTILLO SMITH

INVESTING FOR TOMORROW, DELIVERING TODAY.

BEFORE WE START...

On behalf of all colleagues at the Health Care Authority, we humbly acknowledge we are on the unceded ancestral lands of the original peoples of the Pueblo, Apache, and Diné past, present, and future.

With gratitude we pay our respects to the land, the people and the communities that contribute to what today is known as the State of New Mexico.



*A cloudy morning looking over Santa Cruz Lake.
Photo taken by HCA employee Jessica Gomez*



MISSION

We ensure New Mexicans attain their highest level of health by providing whole-person, cost-effective, accessible, and high-quality health care and safety-net services.



HEALTH CARE
AUTHORITY

VISION

Every New Mexican has access to affordable health care coverage through a coordinated and seamless health care system.

GOALS



LEVERAGE purchasing power and partnerships to create innovative policies and models of comprehensive health care coverage that improve the health and well-being of New Mexicans and the workforce.



ACHIEVE health equity by addressing poverty, discrimination, and lack of resources, building a New Mexico where everyone thrives.



BUILD the best team in state government by supporting employees' continuous growth and wellness.

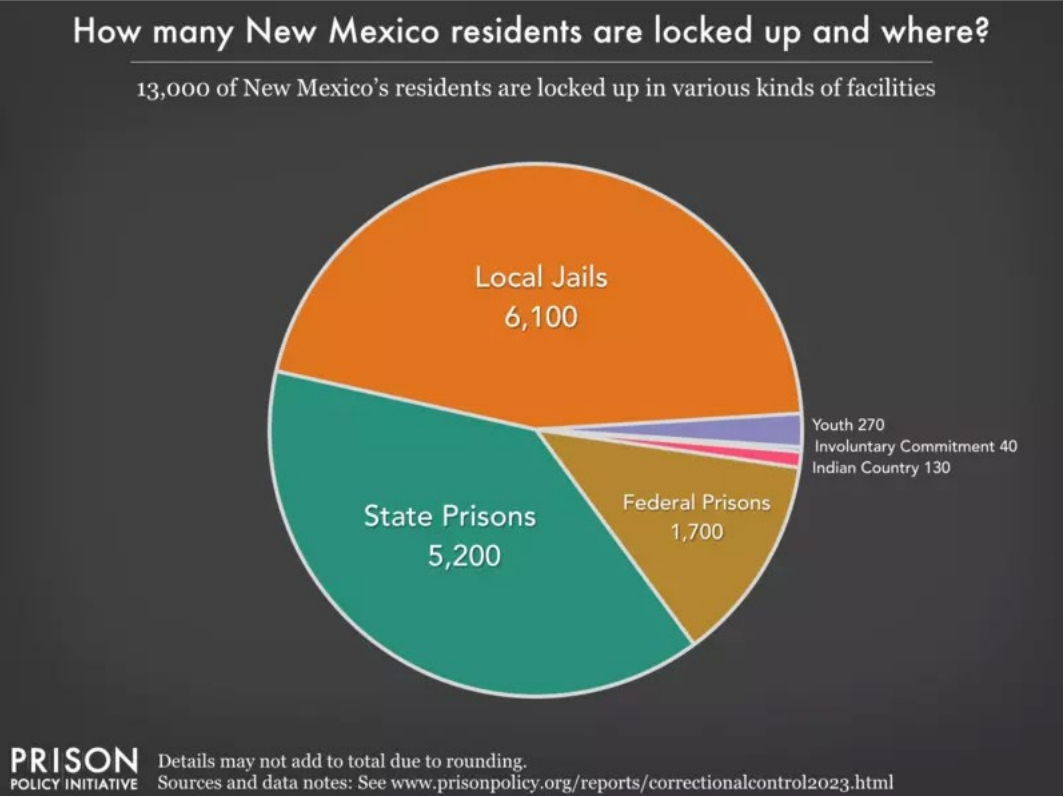


IMPLEMENT innovative technology and data-driven decision-making to provide unparalleled, convenient access to services and information.

JUSTICE-INVOLVED POPULATIONS BACKGROUND

New Mexico has an incarceration rate of 647 per 100,000 people.

Each year, at least 49,000 different people are booked into local jails in New Mexico.



Source: Prison Policy Initiative, New Mexico Profile. Retrieved from: <https://www.prisonpolicy.org/profiles/NM.html>.

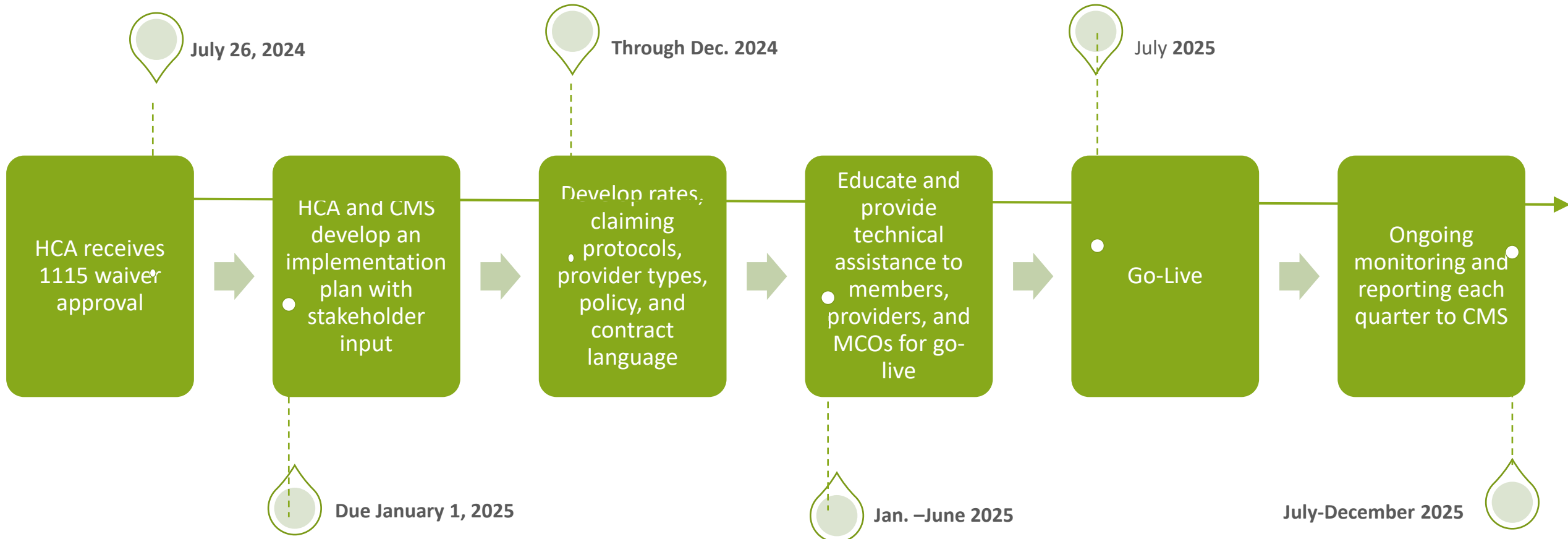


1115 RE-ENTRY WAIVER

Population	All Medicaid eligible beneficiaries and CHIP eligible youth, with the exception of limited benefit populations such as Family Planning and Emergency Services for Non-Citizens (EMSNC).
Services	<p>Required Services</p> <ul style="list-style-type: none"> • Enhanced care management and coordination • Medication Assisted Treatment (MAT) • 30-day supply of medications (including MAT) and Durable Medical Equipment (DME), as appropriate upon release <p>Additional Services – could be added in phased-in approach</p> <ul style="list-style-type: none"> • Physical health (PH) and behavioral health (BH) clinical consultation • Laboratory (lab) and radiology services • Medication and medication administration (including treatment for Hepatitis C) • Services provided by Community Health Workers (CHWs) with lived experience • Family planning services and supplies • BH (including substance use treatment) rehabilitative or preventative services <p>Subject to state budget availability.</p>
Eligible settings	State prisons, county correctional facilities, juvenile correctional facilities, DOH forensic unit state hospitals, tribal holding facilities, tribal jails (pre- or post-conviction).
Coverage period	New Mexico approved for 30 to 90 days pre-release coverage, subject to state budget availability.
Capacity building	New Mexico is considering the addition of one-time start-up funds for planning and capacity building, subject to state budget availability. These funds would support system improvements and remove barriers to implementation.
Budget	The State is in the process of revising estimates to account for the 60-day pre-release coverage period, phased in approach for services. These enhancements are subject to State budget availability.



1115 RE-ENTRY WAIVER: IMPLEMENTATION TIMELINE



1115 RE-ENTRY WAIVER: GOALS AND EXPECTATIONS

GOALS

- Ensure eligible individuals are enrolled in Medicaid and re-entry services up to 90 day prior to release
- Assist county carceral settings with implementing the program and educate on Medicaid billing
- Add 19 more jail and county detention centers as partners

EXPECTATIONS

- Serve up to 52,000 individuals with re-entry services

Assumed Monthly Eligibles	Assumed Annualized Member Months
4,333	52,000





HEALTH CARE
AUTHORITY



QUESTIONS & COMMENTS

INVESTING FOR TOMORROW, DELIVERING TODAY.